

**CITY OF GRAIN VALLEY BOARD OF ALDERMEN
REGULAR MEETING AGENDA**

JULY 13, 2020

7:00 P.M.

OPEN TO THE PUBLIC

LOCATED IN THE COUNCIL CHAMBERS OF CITY HALL
711 MAIN STREET – GRAIN VALLEY, MISSOURI

ITEM I: CALL TO ORDER

- Mayor Chuck Johnston

ITEM II: ROLL CALL

- City Clerk Jamie Logan

ITEM III: INVOCATION

- Pastor Wayne Geiger of First Baptist Church of Grain Valley

ITEM IV: PLEDGE OF ALLEGIANCE

- Alderman Tom Cleaver

ITEM V: APPROVAL OF AGENDA

- City Administrator Ken Murphy

ITEM VI: PROCLAMATIONS

- None

ITEM VII: CITIZEN PARTICIPATION

- Citizens are Asked to Please Limit Their Comments to Two (2) Minutes

ITEM VIII: CONSENT AGENDA

- June 22, 2020 – Board of Aldermen Regular Meeting Minutes
- July 13, 2020 – Accounts Payable
- July 13, 2020 – Human Resources Destruction Certificate

ITEM IX: PREVIOUS BUSINESS

- B&B Theatres Liquor License

ITEM X: NEW BUSINESS

- Mayor Pro-Tem and Board Liaison Assignments
- Food Truck License



ITEM XI: PRESENTATIONS

- None

ITEM XII: PUBLIC HEARING

- None

ITEM XIII: ORDINANCES

ITEM XIII (A) An Ordinance by the Board of Aldermen of the City of Grain Valley, Missouri Authorizing the City Administrator to Enter into an Easement Agreement with Habitat-Missouri, LLC for the Conveyance of the Blue Branch Creek Trail Easement to the City
B20-15
2ND READ

To designate the Blue Branch Creek Trail as a City Easement for the purpose

ITEM XIII (B) An Ordinance Approving the Final Plat of Rosewood Hills 10th Plat
B20-16
2ND READ

To gain final plat approval for Rosewood Hills 10th Plat

ITEM XIII (C) An Ordinance Approving the Final Plat of Rosewood Hills – 9th Plat, Phase A, Tract C1
B20-17
2ND READ

To gain final plat approval for Rosewood Hills-9th Plat, Phase A, Tract C1

ITEM XIV: RESOLUTIONS

ITEM XIV (A) A Resolution Authorizing the Allocation of the City of Grain Valley 2020 Emergency Management Contribution to the Central Jackson County Fire Protection District
R20-36

To ensure Grain Valley is prepared for any emergency situations that may occur

ITEM XIV (B) A Resolution by the Board of Alderman Authorizing the City Administrator to Enter into an Agreement with Jackson County, Missouri for Distribution of Coronavirus Relief Funds in the Amount of \$865,000 for the 2020 Budget Year
R20-37

To allow Grain Valley to access federally provided funds to cover costs associated with the Coronavirus pandemic

ITEM XV: CITY ATTORNEY REPORT

- City Attorney

ITEM XVI: CITY ADMINISTRATOR & STAFF REPORTS

- City Administrator Ken Murphy
- Deputy City Administrator Theresa Osenbaugh
- Chief of Police James Beale
- Finance Director Steven Craig



- Parks & Recreation Director Shannon Davies
- Community Development Director Mark Trosen
- City Clerk Jamie Logan

ITEM XVII: BOARD OF ALDERMEN REPORTS & COMMENTS

- Alderman Shea Bass
- Alderman Tom Cleaver
- Alderman Bob Headley
- Alderman Rick Knox
- Alderman Jayci Stratton
- Alderman Nancy Totton

ITEM XVIII: MAYOR REPORT

- Mayor Chuck Johnston

ITEM XIX: EXECUTIVE SESSION

- Legal Actions, Causes of Action of Litigation Pursuant to Section 610.021(1), RSMo. 1998, as Amended
- Leasing, Purchase or Sale of Real Estate Pursuant to Section 610.021(2), RSMo. 1998, as Amended
- Hiring, Firing, Disciplining or Promoting of Employees (personnel issues), Pursuant to Section 610.021(3), RSMo. 1998, as Amended
- Sealed bids and related documents, until the bids are opened; and sealed proposals and related documents to a negotiated contract until a contract is executed, or all proposals are rejected, Pursuant to Section 610.021(12), RSMo. 1998, as Amended
- Individually Identifiable Personnel Records, Personnel Records, Performance Ratings or Records Pertaining to Employees or Applicants for Employment, Pursuant to Section 610.021(13), RSMo 1998, as Amended.

ITEM XX: ADJOURNMENT



PLEASE NOTE

THE NEXT SCHEDULED MEETING OF THE GRAIN VALLEY BOARD OF ALDERMEN IS A WORKSHOP ON
JULY 20, 2020 AT 7:00 P.M. THE MEETING WILL BE HELD IN THE COUNCIL
CHAMBERS OF THE GRAIN VALLEY CITY HALL

PERSONS REQUIRING AN ACCOMMODATION TO PARTICIPATE IN THE MEETING SHOULD CONTACT
THE CITY CLERK AT 816.847.6211 AT LEAST 48 HOURS BEFORE THE MEETING

THE CITY OF GRAIN VALLEY IS INTERESTED IN EFFECTIVE COMMUNICATION FOR ALL PERSONS
UPON REQUEST, THE MINUTES FROM THIS MEETING CAN BE MADE AVAILABLE BY CALLING
816.847.6211



Consent

Agenda

INTENTIONALLY LEFT BLANK



CITY OF GRAIN VALLEY
BOARD OF ALDERMEN MEETING MINUTES
Regular Session

06/22/2020
PAGE 1 OF 9

ITEM I: CALL TO ORDER

- The Board of Aldermen of the City of Grain Valley, Missouri, met in Regular Session on June 22, 2020 at 7:00 p.m. in the Council Chambers located at Grain Valley City Hall
- The meeting was called to order by Mayor Pro-Tem Bob Headley

ITEM II: ROLL CALL

- City Clerk Jamie Logan called roll
- *Present: Bass, Cleaver, Headley, Stratton, Totton, West*
- *Absent: Todd*

-QUORUM PRESENT-

ITEM III: INVOCATION

- Invocation was not given; the pastor was unable to attend at the last minute

ITEM IV: PLEDGE OF ALLEGIANCE

- The Pledge of Allegiance was led by Alderman Bass

ITEM V: APPROVAL OF AGENDA

- No Changes

ITEM VI: PROCLAMATIONS

- None

ITEM VII: CITIZEN PARTICIPATION

- Tasha Lindsey; Grain Valley Partnership 1450 SW Eagles Parkway; Shared Food Truck Fridays was a success this past week and they would like to ask for approval from the board to shut down part of Walnut from Main Street to the Post office to add another couple of entrée food trucks; Alderman Stratton asked if they need blockades or police; just blockades; Chief Beale did not feel it would interfere with traffic; Ms. Lindsey was advised to obtain a special event permit from the police department

ITEM VIII: PREVIOUS CONSENT AGENDA

- June 8, 2020 – Board of Aldermen Regular Meeting Minutes
- June 22, 2020 – Accounts Payable
- *Alderman West made a Motion to Approve Consent Agenda*
- *The Motion was Seconded by Alderman Totton*

ELECTED OFFICIALS PRESENT

Mayor Chuck Johnston
Alderman Shea Bass
Alderman Tom Cleaver
Alderman Bob Headley
Alderman Rick Knox
Alderman Jayci Stratton
Alderman Nancy Totton
Alderman Yolanda West

ELECTED OFFICIALS ABSENT

Mayor Mike Todd

STAFF OFFICIALS PRESENT

STAFF OFFICIALS PRESENT
City Administrator Ken Murphy
Deputy City Administrator Theresa Osenbaugh
Chief James Beale
Parks and Recreation Director Shannon Davies
Community Development Director Mark Trosen
City Clerk Jamie Logan
City Attorney Joe Lauber



CITY OF GRAIN VALLEY
BOARD OF ALDERMEN MEETING MINUTES
 Regular Session

06/22/2020
 PAGE 2 OF 9

- No Discussion
- *Motion to Approve Consent Agenda was voted on with the following voice vote:*
 - *Aye: Bass, Cleaver, Stratton, Totton, West*
 - *Nay: None*
 - *Abstain: None*

-MOTION APPROVED: 6-0-

ITEM IX: PREVIOUS BUSINESS

- None

ITEM X: PRESENTATIONS

- None

ITEM XI: RESOLUTIONS

- None

ITEM XII: ORDINANCES

Bill No. B20-14: An Ordinance Declaring the Results of the General Election Held in the City of Grain Valley, Missouri on April 7 (June 2), 2020

- *Alderman Stratton moved to make the first reading by title only of **Bill No. B20-14***
- *The Motion was Seconded by Alderman Totton*
- *Motion to make the first reading of **Bill No. B20-14** was voted upon with the following voice vote:*
 - *Aye: Bass, Cleaver, Headley, Stratton, Totton, West*
 - *Nay: None*
 - *Abstain: None*

-Motion Approved: 6-0-

Bill No. B20-14: An Ordinance Declaring the Results of the General Election Held in the City of Grain Valley, Missouri on April 7 (June 2), 2020

Bill No. B20-14 was read by City Attorney Joe Lauber for the first reading

ELECTED OFFICIALS PRESENT

Mayor Chuck Johnston
 Alderman Shea Bass
 Alderman Tom Cleaver
 Alderman Bob Headley
 Alderman Rick Knox
 Alderman Jayci Stratton
 Alderman Nancy Totton
 Alderman Yolanda West

ELECTED OFFICIALS ABSENT

Mayor Mike Todd

STAFF OFFICIALS PRESENT

STAFF OFFICIALS PRESENT
 City Administrator Ken Murphy
 Deputy City Administrator Theresa Osenbaugh
 Chief James Beale
 Parks and Recreation Director Shannon Davies
 Community Development Director Mark Trosen
 City Clerk Jamie Logan
 City Attorney Joe Lauber



CITY OF GRAIN VALLEY
BOARD OF ALDERMEN MEETING MINUTES
 Regular Session

06/22/2020
 PAGE 3 OF 9

- *Alderman Stratton moved to accept the first reading of **Bill No. B20-14** bringing it back for a second reading by title only*
- *The Motion was Seconded by Alderman West*
- *The motion was voted on with the following voice vote:*
 - *Aye: Bass, Cleaver, Headley, Stratton, Totton, West*
 - *Nay: None*
 - *Abstain: None*

-Bill No. B20-14 Approved for a Second Reading: 6-0-

Bill No. B20-14: An Ordinance Declaring the Results of the General Election Held in the City of Grain Valley, Missouri on April 7 (June 2), 2020

Bill No. B20-14 was read by City Attorney Joe Lauber for the second reading

- *Alderman Stratton moved to accept the second reading of **Bill No. B20-14** making it ordinance #2507*
- *The Motion was Seconded by Alderman Totton*
 - *No Discussion*
- *The motion was voted on with the following roll call vote:*
 - *Aye: Bass, Cleaver, Stratton, Totton, West, Headley*
 - *Nay:*
 - *Abstain:*

-Bill No. B20-14 BECAME ORDINANCE #2507: 6-0

- Mayor Pro-Tem Bob Headley presented a plaque to Alderman West and thanked her for her dedication and service to the City of Grain Valley

Item XIII: ELECTED OFFICIAL OATH OF OFFICE

- City Clerk Jamie Logan administered the Oath of Office to the following elected officials:
 - Chuck Johnston, Mayor
 - Jayci Stratton, Alderman Ward I
 - Rick Knox, Alderman Ward II
 - Bob Headley, Alderman Ward III

ELECTED OFFICIALS PRESENT
 Mayor Chuck Johnston
 Alderman Shea Bass
 Alderman Tom Cleaver
 Alderman Bob Headley
 Alderman Rick Knox
 Alderman Jayci Stratton
 Alderman Nancy Totton
 Alderman Yolanda West

ELECTED OFFICIALS ABSENT
 Mayor Mike Todd

STAFF OFFICIALS PRESENT
STAFF OFFICIALS PRESENT
 City Administrator Ken Murphy
 Deputy City Administrator Theresa Osenbaugh
 Chief James Beale
 Parks and Recreation Director Shannon Davies
 Community Development Director Mark Trosen
 City Clerk Jamie Logan
 City Attorney Joe Lauber



CITY OF GRAIN VALLEY
BOARD OF ALDERMEN MEETING MINUTES
 Regular Session

06/22/2020
 PAGE 4 OF 9

ITEM XIV: NEW BUSINESS

- B&B Movie Theatres Liquor License Request
 - City Clerk Logan stated the application was received and Chief Beale is reviewing the background, & the county’s liquor license has not been received yet & we hope to have that complete by the next regularly scheduled meeting; They have plans to reopen on 7/1, and to begin selling alcohol as soon as the application is approved

ITEM XV: ORDINANCES

Bill No. B20-15: An Ordinance by the Board of Aldermen of the City of Grain Valley, Missouri Authorizing the City Administrator to Enter into an Easement Agreement with Habitat-Missouri, LLC for the Conveyance of the Blue Branch Creek Trail Easement to the City

- *Alderman Headley moved to make the first reading by title only of **Bill No. B20-15***
- *The Motion was Seconded by Alderman Stratton*
 - *This ordinance is one of the final pieces of the Blue Branch Trail project; trail is complete, this will convey the 16’ to the City*
- *Motion to make the first reading of **Bill No. B20-15** was voted upon with the following voice vote:*
 - *Aye: Bass, Cleaver, Headley, Knox, Stratton, Totton*
 - *Nay: None*
 - *Abstain: None*

-Motion Approved: 6-0-

Bill No. B20-15: An Ordinance by the Board of Aldermen of the City of Grain Valley, Missouri Authorizing the City Administrator to Enter into an Easement Agreement with Habitat-Missouri, LLC for the Conveyance of the Blue Branch Creek Trail Easement to the City

Bill No. B20-15 was read by City Attorney Joe Lauber for the first reading

- *Alderman Headley moved to accept the first reading of **Bill No. B20-15** bringing it back for a second reading by title only at the next regularly scheduled meeting*
- *The Motion was Seconded by Alderman Stratton*

ELECTED OFFICIALS PRESENT	ELECTED OFFICIALS ABSENT	STAFF OFFICIALS PRESENT
Mayor Chuck Johnston Alderman Shea Bass Alderman Tom Cleaver Alderman Bob Headley Alderman Rick Knox Alderman Jayci Stratton Alderman Nancy Totton Alderman Yolanda West	Mayor Mike Todd	STAFF OFFICIALS PRESENT City Administrator Ken Murphy Deputy City Administrator Theresa Osenbaugh Chief James Beale Parks and Recreation Director Shannon Davies Community Development Director Mark Trosen City Clerk Jamie Logan City Attorney Joe Lauber



CITY OF GRAIN VALLEY
BOARD OF ALDERMEN MEETING MINUTES
 Regular Session

06/22/2020
 PAGE 5 OF 9

- *The motion was voted on with the following voice vote:*
 - *Aye: Bass, Cleaver, Headley, Knox, Stratton, Totton*
 - *Nay: None*
 - *Abstain: None*

-Bill No. B20-15 Approved for a Second Reading: 6-0-

Bill No. B20-16: An Ordinance Approving the Final Plat of Rosewood Hills 10th Plat

- *Alderman Headley moved to make the first reading by title only of **Bill No. B20-16***
- *The Motion was Seconded by Alderman Bass*
 - *Next phase approval for Rosewood Hills; this one involves a creek crossing with 3 lanes; 42 lots and a tract totaling 22 acres*
- *Motion to make the first reading of **Bill No. B20-16** was voted upon with the following voice vote:*
 - *Aye: Bass, Cleaver, Headley, Knox, Stratton, Totton*
 - *Nay: None*
 - *Abstain: None*

-Motion Approved: 6-0-

Bill No. B20-16: An Ordinance Approving the Final Plat of Rosewood Hills 10th Plat

Bill No. B20-16 was read by City Attorney Joe Lauber for the first reading

- *Alderman Headley moved to accept the first reading of **Bill No. B20-16** bringing it back for a second reading by title only at the next regularly scheduled meeting*
- *The Motion was Seconded by Alderman Bass*
- *The motion was voted on with the following voice vote:*
 - *Aye: Bass, Cleaver, Headley, Knox, Stratton, Totton*
 - *Nay: None*
 - *Abstain: None*

-Bill No. B20-16 Approved for a Second Reading: 6-0-

Bill No. B20-17: An Ordinance Approving the Final Plat of Rosewood Hills – 9th Plat, Phase A,

ELECTED OFFICIALS PRESENT

Mayor Chuck Johnston
 Alderman Shea Bass
 Alderman Tom Cleaver
 Alderman Bob Headley
 Alderman Rick Knox
 Alderman Jayci Stratton
 Alderman Nancy Totton
 Alderman Yolanda West

ELECTED OFFICIALS ABSENT

Mayor Mike Todd

STAFF OFFICIALS PRESENT

STAFF OFFICIALS PRESENT
 City Administrator Ken Murphy
 Deputy City Administrator Theresa Osenbaugh
 Chief James Beale
 Parks and Recreation Director Shannon Davies
 Community Development Director Mark Trosen
 City Clerk Jamie Logan
 City Attorney Joe Lauber



CITY OF GRAIN VALLEY
BOARD OF ALDERMEN MEETING MINUTES
 Regular Session

06/22/2020
PAGE 6 OF 9

Tract C1

- *Alderman Headley moved to make the first reading by title only of **Bill No. B20-17***
- *The Motion was Seconded by Alderman Bass*
 - *When the 9th plat was approved they thought there may be two creek crossings; now this needs to be a permanent cul de sac- will create additional right of way*
- *Motion to make the first reading of **Bill No. B20-17** was voted upon with the following voice vote:*
 - *Aye: Bass, Cleaver, Headley, Knox, Stratton, Totton*
 - *Nay: None*
 - *Abstain: None*

-Motion Approved: 6-0-

Bill No. B20-17: An Ordinance Approving the Final Plat of Rosewood Hills – 9th Plat, Phase A, Tract C1

Bill No. B20-17 was read by City Attorney Joe Lauber for the first reading

- *Alderman Headley moved to accept the first reading of **Bill No. B20-17** bringing it back for a second reading by title only at the next regularly scheduled meeting*
- *The Motion was Seconded by Alderman Bass*
- *The motion was voted on with the following voice vote:*
 - *Aye: Bass, Cleaver, Headley, Knox, Stratton, Totton*
 - *Nay: None*
 - *Abstain: None*

-Bill No. B20-17 Approved for a Second Reading: 6-0-

ITEM XV: RESOLUTIONS

Resolution No. R20-35: A Resolution by the Board of Aldermen of the City of Grain Valley Authorizing the City Administrator to Purchase a MAXXD TDX Tilt Trailer for use by Public Works

- *Alderman Headley motioned to approve Resolution No. R20-35*
- *The Motion was Seconded by Alderman Totton*

ELECTED OFFICIALS PRESENT
 Mayor Chuck Johnston
 Alderman Shea Bass
 Alderman Tom Cleaver
 Alderman Bob Headley
 Alderman Rick Knox
 Alderman Jayci Stratton
 Alderman Nancy Totton
 Alderman Yolanda West

ELECTED OFFICIALS ABSENT
 Mayor Mike Todd

STAFF OFFICIALS PRESENT
STAFF OFFICIALS PRESENT
 City Administrator Ken Murphy
 Deputy City Administrator Theresa Osenbaugh
 Chief James Beale
 Parks and Recreation Director Shannon Davies
 Community Development Director Mark Trosen
 City Clerk Jamie Logan
 City Attorney Joe Lauber



CITY OF GRAIN VALLEY
BOARD OF ALDERMEN MEETING MINUTES
 Regular Session

06/22/2020
 PAGE 7 OF 9

- *Mr. Trosen said this authorizes the City to purchase a tilt trailer for Public Works; competitive bid process was completed and well below budget; Alderman Cleaver asked how much it could haul; 22,500 pounds*
- *Resolution No. R20-35 was voted upon with the following voice vote:*
 - *Aye: Bass, Cleaver, Headley, Knox, Stratton, Totton*
 - *Nay: None*
 - *Abstain: None*

-Resolution No. R20-35 Approved: 6-0-

ITEM XVII: CITY ATTORNEY REPORT

- City Attorney Lauber shared there are elected official trainings and he placed a brochure on the dias for them
- Sarah Carnes started today as a new attorney in their office; she may be one of the attorneys rotating in for Joe at the Board of Aldermen meetings

ITEM XVIII: CITY ADMINISTRATOR & STAFF REPORTS

- City Administrator Ken Murphy
 - Per ordinance, fireworks will be allowed on July 2, 3 and 4th this year
- Deputy City Administrator Theresa Osenbaugh
 - None
- Chief James Beale
 - None
- Finance Director Steven Craig
 - None
- Parks & Recreation Director Shannon Davies
 - Opened the aquatic center on June 13, with several restrictions in place; they have hit capacity a few times already
- Community Development Director Mark Trosen
 - Written Report
- City Clerk Jamie Logan
 - None

ITEM XIX: BOARD OF ALDERMEN REPORTS & COMMENTS

- Alderman Shea Bass
 - It was nice serving with Previous Alderman West and he looks forward to working with Alderman Knox and Mayor Johnston

ELECTED OFFICIALS PRESENT
 Mayor Chuck Johnston
 Alderman Shea Bass
 Alderman Tom Cleaver
 Alderman Bob Headley
 Alderman Rick Knox
 Alderman Jayci Stratton
 Alderman Nancy Totton
 Alderman Yolanda West

ELECTED OFFICIALS ABSENT
 Mayor Mike Todd

STAFF OFFICIALS PRESENT
STAFF OFFICIALS PRESENT
 City Administrator Ken Murphy
 Deputy City Administrator Theresa Osenbaugh
 Chief James Beale
 Parks and Recreation Director Shannon Davies
 Community Development Director Mark Trosen
 City Clerk Jamie Logan
 City Attorney Joe Lauber



CITY OF GRAIN VALLEY
BOARD OF ALDERMEN MEETING MINUTES
Regular Session

06/22/2020
PAGE 8 OF 9

- Alderman Tom Cleaver
 - Nice serving with Ms. West and welcomed the new members
- Alderman Bob Headley
 - Nice serving with Ms. West and welcomed the new members
- Alderman Rick Knox
 - Hopes he can do as fine as job as Yolanda West did
- Alderman Jayci Stratton
 - Pleasure serving with Alderman West and welcome to the two new members
- Alderman Nancy Totton
 - She enjoyed the food truck Fridays this past week; She said she'll miss Yolanda West and congratulations to the new people

ITEM XX: MAYOR REPORT

- Mayor Chuck Johnston
 - Said it was a pleasure working with Yolanda in the past
 - Every study that has been done over years show road conditions have been a big concern and he'd like to focus more attention on this; and said the budget in place now wouldn't begin to touch it
 - He's hoping to look for solutions on the current space issue in City Hall
 - Thanked those for their support during the campaign

ITEM XXI: EXECUTIVE SESSION

- None

ITEM XXII: ADJOURNMENT

- The meeting adjourned at 7:35 p.m.

ELECTED OFFICIALS PRESENT

Mayor Chuck Johnston
Alderman Shea Bass
Alderman Tom Cleaver
Alderman Bob Headley
Alderman Rick Knox
Alderman Jayci Stratton
Alderman Nancy Totton
Alderman Yolanda West

ELECTED OFFICIALS ABSENT

Mayor Mike Todd

STAFF OFFICIALS PRESENT

STAFF OFFICIALS PRESENT
City Administrator Ken Murphy
Deputy City Administrator Theresa Osenbaugh
Chief James Beale
Parks and Recreation Director Shannon Davies
Community Development Director Mark Trosen
City Clerk Jamie Logan
City Attorney Joe Lauber



CITY OF GRAIN VALLEY
BOARD OF ALDERMEN MEETING MINUTES
Regular Session

06/22/2020
PAGE 9 OF 9

Minutes submitted by:

Jamie Logan
City Clerk

Date

Minutes approved by:

Chuck Johnston
Mayor

Date

ELECTED OFFICIALS PRESENT

Mayor Chuck Johnston
Alderman Shea Bass
Alderman Tom Cleaver
Alderman Bob Headley
Alderman Rick Knox
Alderman Jayci Stratton
Alderman Nancy Totton
Alderman Yolanda West

ELECTED OFFICIALS ABSENT

Mayor Mike Todd

STAFF OFFICIALS PRESENT

STAFF OFFICIALS PRESENT
City Administrator Ken Murphy
Deputy City Administrator Theresa Osenbaugh
Chief James Beale
Parks and Recreation Director Shannon Davies
Community Development Director Mark Trosen
City Clerk Jamie Logan
City Attorney Joe Lauber

INTENTIONALLY LEFT BLANK

DEPARTMENT	FUND	VENDOR NAME	DESCRIPTION	AMOUNT
NON-DEPARTMENTAL	GENERAL FUND	KCMO CITY TREASURER	KC EARNINGS TAX WH	47.27
			KC EARNINGS TAX WH	41.43
		MO DEPT OF REVENUE	MISSOURI WITHHOLDING	2,380.94
			MISSOURI WITHHOLDING	100.00
			MISSOURI WITHHOLDING	2,398.88
		FRATERNAL ORDER OF POLICE	EMPLOYEE DEDUCTIONS	336.00
			EMPLOYEE DEDUCTIONS	336.00
		HAMPEL OIL INC	CJC FUEL	263.74
		AFLAC	AFLAC AFTER TAX	126.59
			AFLAC AFTER TAX	126.59
			AFLAC CRITICAL CARE	24.96
			AFLAC CRITICAL CARE	24.96
			AFLAC PRETAX	300.98
			AFLAC PRETAX	301.46
			AFLAC-W2 DD PRETAX	166.32
			AFLAC-W2 DD PRETAX	200.14
		MIDWEST PUBLIC RISK	DENTAL	162.67
			DENTAL	180.72
			OPEN ACCESS	567.60
			OPEN ACCESS	476.00
			OPEN ACCESS	203.08
			OPEN ACCESS	212.52
			HSA	251.75
			HSA	470.73
			HSA	1,545.03
			HSA	1,513.31
			HSA	161.08
			HSA	167.12
			VISION	16.00
			VISION	50.86
			VISION	47.33
			VISION	114.97
			VISION	115.59
			VISION	26.26
			VISION	22.47
		HSA BANK	HSA - GRAIN VALLEY, MO	260.99
			HSA - GRAIN VALLEY, MO	320.66
			HSA - GRAIN VALLEY, MO	372.02
			HSA - GRAIN VALLEY, MO	435.66
		SHERIFFS RETIREMENT SYSTEM	JUNE 2020 SHERIFF RETIREME	139.34
		THE LINCOLN NATIONAL LIFE INSURANCE CO	JULY 2020 DISABILITY	262.74
		RICKY WOODERSON	SKILLMAN RESTITUTION	100.00
		CITY OF GRAIN VALLEY -FLEX	FLEX - DEPENDENT CARE	213.80
			FLEX - DEPENDENT CARE	216.67
		HOPE HOUSE	JUNE 20 DOMESTIC VIOLENCE	184.00
		MO DEPT OF REVENUE	JUNE 2020 CVC FUNDS	335.11
			MAY 2020 CVC FUNDS	213.90
		MO DEPT OF PUBLIC SAFETY	JUNE 20 TRAINING FUND	47.00
		ICMA RC	ICMA 457 %	302.94
			ICMA 457 %	297.50
			ICMA 457	361.00
			ICMA 457	402.48
			ICMA ROTH IRA	67.73
			ICMA ROTH IRA	27.56
		INTERNAL REVENUE SERVICE	FEDERAL WH	6,696.60
			FEDERAL WH	250.00

DEPARTMENT	FUND	VENDOR NAME	DESCRIPTION	AMOUNT
			FEDERAL WH	6,797.86
			SOCIAL SECURITY	4,537.66
			SOCIAL SECURITY	388.12
			SOCIAL SECURITY	4,547.20
			MEDICARE	1,061.23
			MEDICARE	90.80
			MEDICARE	<u>1,063.47</u>
			TOTAL:	43,475.39
HR/CITY CLERK	GENERAL FUND	MISSOURI LAGERS	MONTHLY CONTRIBUTIONS	157.08
			MONTHLY CONTRIBUTIONS	157.06
		WAGeworks	JUN 2020 MONTHLY FEES	63.50
		STANDARD INSURANCE CO	JULY 20 STANDARD LIFE INSU	12.00
		MIDWEST PUBLIC RISK	DENTAL	34.56
			DENTAL	35.02
			JULY 20 DEN RECON	0.62
			JULY 20 MED RECON	51.81
			JULY 20 VSP RECON	0.09
			HSA	237.40
			HSA	239.85
			HSA	312.21
			HSA	334.67
		HSA BANK	HSA - GRAIN VALLEY, MO	100.00
			HSA - GRAIN VALLEY, MO	100.33
		THE LINCOLN NATIONAL LIFE INSURANCE CO	JULY 2020 DISABILITY	16.58
		FIRST AID CORP	WIPES/HYDROCORTISONE CREAM	376.38
		CONCENTRA MEDICAL CENTERS	MEES SCREENING	89.50
		INTERNAL REVENUE SERVICE	SOCIAL SECURITY	110.72
			SOCIAL SECURITY	110.96
			MEDICARE	25.90
			MEDICARE	25.95
		MARELLY AEDS & FIRST AID	AED DEVICE	<u>1,909.90</u>
			TOTAL:	4,502.09
INFORMATION TECH	GENERAL FUND	NETSTANDARD INC	APR DATASAFE BACKUPS	875.00
			NETSTANDARD CLARITY	3,708.00
			06/12-07/11 OFFICE 365	738.00
		MISSOURI LAGERS	MONTHLY CONTRIBUTIONS	4.59
		MIDWEST PUBLIC RISK	DENTAL	0.58
			HSA	9.57
		HSA BANK	HSA - GRAIN VALLEY, MO	2.40
		VERIZON WIRELESS	CELLULAR SERVICE 06/19-07/	160.04
			CELLULAR SERVICE 06/19-07/	40.01
		SUMNERONE INC	New Plotter	3,861.00
			SERVICE 061620	250.00
		GEOGRAPHIC INFORMATION SERVICES	GIS Inc	2,500.00
		INTERNAL REVENUE SERVICE	SOCIAL SECURITY	3.45
			MEDICARE	<u>0.81</u>
			TOTAL:	12,153.45
BLDG & GRDS	GENERAL FUND	BATTS COMMUNICATIONS SERVICES INC	JULY 20 MAINTENANCE	125.00
		ORKIN	12/18/2017 SERVICE	69.48
		GENERAL ELEVATOR	JULY SERVICE	144.00
		KENNYCO INDUSTRIES	6 MONTH FIRE ALARM	288.00
		CARROT-TOP INDUSTRIES	5' X 8' PATRIARCH AMERICAN	284.94
		EVERGY	GREGG ST	46.30

DEPARTMENT	FUND	VENDOR NAME	DESCRIPTION	AMOUNT
			600 BUCKNER TARSNEY RD	21.86
			596 BUCKNER TARSNEY	14.48
			CAPPELL & FRONT, PH, PUBL	11.08
			618 JAMES ROLLO CT	126.49
			1608 NW WOODBURY DR	37.94
			6100 S BUCKNER TARSNEY RD	12.68
			618 JAMES ROLLO CT	23.04
			711 MMAIN ST CITY HALL	1,317.09
			620 JAMES ROLLO CT	26.49
			517 GREGG	89.96
			1805 NW WILLOW DR	37.89
		STANGER INDUSTRIES INC	HVAC MAINTENANCE	<u>1,297.80</u>
			TOTAL:	3,974.52
ADMINISTRATION	GENERAL FUND	GRAIN VALLEY SCHOOL DISTRICT	GRAIN VALLEY EAGLE GOLF FU	380.00
		MISSOURI LAGERS	EMPLOYER CONTRIBUTIONS	7.92
			MONTHLY CONTRIBUTIONS	328.78
			MONTHLY CONTRIBUTIONS	338.33
		OFFICE DEPOT	FRESHENER/PAPER	40.04
		STANDARD INSURANCE CO	JULY 20 STANDARD LIFE INSU	15.00
		MIDWEST PUBLIC RISK	DENTAL	23.69
			DENTAL	24.36
			DENTAL	2.50
			JULY 20 DEN RECON	1.03
			JULY 20 MED RECON	44.50
			JULY 20 VSP RECON	0.05
			OPEN ACCESS	180.20
			HSA	13.02
			HSA	243.61
			HSA	404.75
			HSA	29.36
		HSA BANK	HSA - GRAIN VALLEY, MO	63.50
			HSA - GRAIN VALLEY, MO	62.89
			HSA - GRAIN VALLEY, MO	7.17
		THE LINCOLN NATIONAL LIFE INSURANCE CO	JULY 2020 DISABILITY	30.55
		LAUBER MUNICIPAL LAW LLC	OLD TOWNE MRKTPL TIF	236.50
			ED MATTERS	302.50
		INTERNAL REVENUE SERVICE	SOCIAL SECURITY	262.76
			SOCIAL SECURITY	273.38
			MEDICARE	61.46
			MEDICARE	<u>63.93</u>
			TOTAL:	3,352.78
SELECTED	GENERAL FUND	VERIZON WIRELESS	CELLULAR SERVICE 06/19-07/	40.01
		MVP AWARDS & MORE	NAME PLATE/ KNOX, JOHNSTON	68.00
		INTERNAL REVENUE SERVICE	SOCIAL SECURITY	388.12
			MEDICARE	<u>90.80</u>
			TOTAL:	586.93
LEGAL	GENERAL FUND	LAUBER MUNICIPAL LAW LLC	CITY ATTORNEY	<u>6,219.00</u>
			TOTAL:	6,219.00
FINANCE	GENERAL FUND	TROUTT BEEMAN & CO PC	FINANCIAL AUDIT	7,500.00
			FINANCIAL AUDIT	6,475.00
		MO DEPT OF REVENUE	MISSOURI WITHHOLDING	0.50
			MISSOURI WITHHOLDING	0.50

DEPARTMENT	FUND	VENDOR NAME	DESCRIPTION	AMOUNT
			MISSOURI WITHHOLDING	0.50
		MISSOURI LAGERS	MONTHLY CONTRIBUTIONS	229.63
			MONTHLY CONTRIBUTIONS	229.64
		STANDARD INSURANCE CO	JULY 20 STANDARD LIFE INSU	12.00
		MIDWEST PUBLIC RISK	DENTAL	34.56
			DENTAL	34.68
			JULY 20 DEN RECON	0.62
			JULY 20 MED RECON	161.83
			JULY 20 VSP RECON	0.05
			OPEN ACCESS	391.03
			HSA	143.87
			HSA	145.33
			HSA	329.16
		HSA BANK	HSA - GRAIN VALLEY, MO	37.50
			HSA - GRAIN VALLEY, MO	36.45
			HSA - GRAIN VALLEY, MO	50.79
		THE LINCOLN NATIONAL LIFE INSURANCE CO	JULY 2020 DISABILITY	24.23
		INTERNAL REVENUE SERVICE	SOCIAL SECURITY	173.28
			SOCIAL SECURITY	169.04
			MEDICARE	40.53
			MEDICARE	<u>39.53</u>
			TOTAL:	15,936.59
COURT	GENERAL FUND	MISSOURI LAGERS	MONTHLY CONTRIBUTIONS	146.98
			MONTHLY CONTRIBUTIONS	147.51
		STANDARD INSURANCE CO	JULY 20 STANDARD LIFE INSU	12.00
		MIDWEST PUBLIC RISK	DENTAL	17.59
			DENTAL	18.00
			DENTAL	0.79
			DENTAL	0.95
			JULY 20 DEN RECON	0.82
			JULY 20 MED RECON	22.52
			JULY 20 VSP RECON	0.18
			HSA	287.74
			HSA	299.00
			HSA	14.30
			HSA	17.73
		HSA BANK	HSA - GRAIN VALLEY, MO	75.00
			HSA - GRAIN VALLEY, MO	75.00
			HSA - GRAIN VALLEY, MO	2.29
			HSA - GRAIN VALLEY, MO	2.74
		THE LINCOLN NATIONAL LIFE INSURANCE CO	JULY 2020 DISABILITY	15.23
		ROSS MILLER CLEANERS	APR/MAY CLEANING	26.00
		LAUBER MUNICIPAL LAW LLC	PROSECUTING ATTORNEY	4,602.50
			RH PERSONNEL ISSUE	595.00
		INTERNAL REVENUE SERVICE	SOCIAL SECURITY	172.07
			SOCIAL SECURITY	172.41
			MEDICARE	40.24
			MEDICARE	<u>40.32</u>
			TOTAL:	6,804.91
VICTIM SERVICES	GENERAL FUND	MISSOURI LAGERS	MONTHLY CONTRIBUTIONS	127.32
			MONTHLY CONTRIBUTIONS	127.32
		STANDARD INSURANCE CO	JULY 20 STANDARD LIFE INSU	12.00
		MIDWEST PUBLIC RISK	DENTAL	34.56
			DENTAL	34.90

DEPARTMENT	FUND	VENDOR NAME	DESCRIPTION	AMOUNT
			JULY 20 DEN RECON	0.62
			JULY 20 MED RECON	60.62
			JULY 20 VSP RECON	0.10
			HSA	624.41
			HSA	648.05
		HSA BANK	HSA - GRAIN VALLEY, MO	100.00
			HSA - GRAIN VALLEY, MO	100.00
		THE LINCOLN NATIONAL LIFE INSURANCE CO	JULY 2020 DISABILITY	13.43
		VERIZON WIRELESS	CELLULAR SERVICE 06/19-07/	43.06
		INTERNAL REVENUE SERVICE	SOCIAL SECURITY	136.12
			SOCIAL SECURITY	136.00
			MEDICARE	31.84
			MEDICARE	<u>31.81</u>
			TOTAL:	2,262.16
FLEET	GENERAL FUND	MISSOURI LAGERS	MONTHLY CONTRIBUTIONS	71.03
			MONTHLY CONTRIBUTIONS	73.32
		ADVANCE AUTO PARTS	60) OIL 5W30 1 QT	119.40
			BRAKER CLEANER	23.88
			OIL FULL SYN 5W30	95.70
		STANDARD INSURANCE CO	JULY 20 STANDARD LIFE INSU	6.00
		OREILLY AUTOMOTIVE INC	GSK MATERIAL	16.48
			FUEL HOSE	59.99
			CONNECTOR	25.98
			HUB CLN KIT	42.52
			NITRILE GLV	43.47
			QT-RESINJELY	15.48
		MIDWEST PUBLIC RISK	DENTAL	17.28
			DENTAL	18.02
			JULY 20 DEN RECON	0.62
			JULY 20 MED RECON	22.52
			JULY 20 VSP RECON	16.00
			HSA	143.87
			HSA	154.32
		HSA BANK	HSA - GRAIN VALLEY, MO	37.50
			HSA - GRAIN VALLEY, MO	38.71
		THE LINCOLN NATIONAL LIFE INSURANCE CO	JULY 2020 DISABILITY	7.50
		CINTAS CORPORATION # 430	PW/WOLTZ UNIFORMS	9.92
		INTERNAL REVENUE SERVICE	SOCIAL SECURITY	55.46
			SOCIAL SECURITY	57.00
			MEDICARE	12.97
			MEDICARE	<u>13.33</u>
			TOTAL:	1,198.27
POLICE	GENERAL FUND	MISSOURI LAGERS	EMPLOYER CONTRIBUTIONS	4,103.74
			ROUNDING	0.02
			EMPLOYER CONTRIBUTIONS	4,122.12
			MONTHLY CONTRIBUTIONS	365.35
			MONTHLY CONTRIBUTIONS	365.35
		ADVANCE AUTO PARTS	AIR FILTER	7.73
			CABIN AIR FILTER	9.21
			CABIN AIR FILTER	8.22
			WASHER PUMP	25.22
			CABIN AIR FILTER	21.36
		STATE BANK OF MISSOURI	07/20 IN-CAR SYSTEM	2,314.61
		WALMART COMMUNITY	NEW MICROWAVE	188.67

DEPARTMENT	FUND	VENDOR NAME	DESCRIPTION	AMOUNT
		STANDARD INSURANCE CO	JULY 20 STANDARD LIFE INSU	312.00
		AMAZON.COM	2) RAZOR DXT DRIFT TRIKE	299.98
			WEATHER RESISTANT STANDARD	25.98
			JAYEFO BEAST GRAPPLING DUM	84.99
			DISPOSABLE FACE MASK	299.99
			THERMOMETER	119.96
		OREILLY AUTOMOTIVE INC	ROTOR/DISC PAD SET	352.17
		HAMPEL OIL INC	BULK GASOHOL/DIESEL	1,321.75
			BULK GASOHOL/DIESEL	252.89
		COMCAST	HIGH SPEED INTERNET	149.85
		FASTENAL COMPANY	FIRE EXT 10# ABC	190.71
		COMMENCO INC	DISPLAY LIGHT NOT WORKING	78.75
		GOODYEAR COMMERCIAL TIRE	3) GY 245/55R18 EAG RSA VS	406.50
			2) GY 265/60R17 EAG RSA VS	259.00
			3) GY 245/55R18 EAG RSA VS	406.50
		MIDWEST PUBLIC RISK	DENTAL	211.08
			DENTAL	162.00
			DENTAL	483.84
			DENTAL	556.82
			JULY 20 DEN RECON	86.53
			JULY 20 MED RECON	1,277.06
			JULY 20 VSP RECON	10.71
			OPEN ACCESS	720.78
			OPEN ACCESS	756.00
			OPEN ACCESS	1,564.10
			OPEN ACCESS	1,640.00
			OPEN ACCESS	688.35
			OPEN ACCESS	721.20
			HSA	949.58
			HSA	1,970.80
			HSA	3,165.14
			HSA	2,691.00
			HSA	4,370.87
			HSA	3,858.94
			HSA	549.59
			HSA	570.70
		HSA BANK	HSA - GRAIN VALLEY, MO	825.00
			HSA - GRAIN VALLEY, MO	675.00
			HSA - GRAIN VALLEY, MO	1,000.00
			HSA - GRAIN VALLEY, MO	1,095.47
		MO DEPT OF REVENUE	VEHICLE TITLES	43.50
		BLUE SPRINGS FORD LINCOLN	BOLT	4.31
		THE LINCOLN NATIONAL LIFE INSURANCE CO	JULY 2020 DISABILITY	424.04
		METRO FORD	BOLT	24.00
		CHEWY.COM	PURINA PRO PLAN SPORT HIGH	64.60
		ALL K 9 INC	SURE GRIP DOG LEASH	16.99
		VERIZON WIRELESS	CELLULAR SERVICE 06/19-07/	80.02
			CELLULAR SERVICE 06/19-07/	129.18
			CELLULAR SERVICE 06/19-07/	1,178.84
		JACKSON COUNTY PARKS AND RECREATION	CAMP FOCUS SHELTER RENTAL	140.00
		DIVERSIFIED PRODUCTS USA	FACEPLATE FOR K9 SCANNER	50.00
		ROSS MILLER CLEANERS	APR/MAY CLEANING	35.75
		INTERNAL REVENUE SERVICE	SOCIAL SECURITY	3,155.05
			SOCIAL SECURITY	3,152.13
			MEDICARE	737.88
			MEDICARE	737.20

DEPARTMENT	FUND	VENDOR NAME	DESCRIPTION	AMOUNT
		REJIS COMMISSION	FEB 20 LEWEB SUBSCRIPTION	312.95
			JUN 20 LEWEB SUBSCRIPTION	312.95
		GEARZONE PRODUCTS	WEAPON MOUNTED LIGHT	2,759.76
			PROPPER KINETIC MENS PANT	<u>49.99</u>
			TOTAL:	60,102.32
ANIMAL CONTROL	GENERAL FUND	MISSOURI LAGERS	MONTHLY CONTRIBUTIONS	98.50
			MONTHLY CONTRIBUTIONS	100.34
		STANDARD INSURANCE CO	JULY 20 STANDARD LIFE INSU	12.00
		OREILLY AUTOMOTIVE INC	ROCKER SWTCH	4.99
		HAMPEL OIL INC	BULK GASOHOL/DIESEL	37.98
		MIDWEST PUBLIC RISK	JULY 20 MED RECON	35.22
			OPEN ACCESS	360.39
			OPEN ACCESS	378.00
		ASPEN PET CREMATIONS	ASPEN PET CREMATIONS	63.91
			ASPEN PET CREMATIONS	5.89
		THE LINCOLN NATIONAL LIFE INSURANCE CO	JULY 2020 DISABILITY	10.40
		VERIZON WIRELESS	CELLULAR SERVICE 06/19-07/	43.06
		INTERNAL REVENUE SERVICE	SOCIAL SECURITY	77.30
			SOCIAL SECURITY	78.75
			MEDICARE	18.08
			MEDICARE	<u>18.42</u>
			TOTAL:	1,343.23
PLANNING & ENGINEERING	GENERAL FUND	MISSOURI LAGERS	MONTHLY CONTRIBUTIONS	513.06
			MONTHLY CONTRIBUTIONS	513.13
		STANDARD INSURANCE CO	JULY 20 STANDARD LIFE INSU	35.97
		HAMPEL OIL INC	BULK GASOHOL/DIESEL	61.93
		MIDWEST PUBLIC RISK	DENTAL	48.12
			DENTAL	49.28
			DENTAL	10.10
			DENTAL	10.21
			JULY 20 DEN RECON	2.44
			JULY 20 MED RECON	82.17
			JULY 20 VSP RECON	0.87-
			OPEN ACCESS	103.25
			OPEN ACCESS	108.18
			HSA	787.19
			HSA	818.46
			HSA	78.24
			HSA	81.24
		HSA BANK	HSA - GRAIN VALLEY, MO	205.18
			HSA - GRAIN VALLEY, MO	205.29
			HSA - GRAIN VALLEY, MO	14.24
			HSA - GRAIN VALLEY, MO	14.24
		THE LINCOLN NATIONAL LIFE INSURANCE CO	JULY 2020 DISABILITY	54.25
		VERIZON WIRELESS	CELLULAR SERVICE 06/19-07/	6.46
		WATER ENVIRONMENT FEDERATION	TUTTLE: MEMBERSHIP	177.00
		INTERNAL REVENUE SERVICE	SOCIAL SECURITY	394.92
			SOCIAL SECURITY	394.10
			MEDICARE	92.37
			MEDICARE	<u>92.18</u>
			TOTAL:	4,952.33
NON-DEPARTMENTAL	PARK FUND	KCMO CITY TREASURER	KC EARNINGS TAX WH	21.36
			KC EARNINGS TAX WH	21.36

DEPARTMENT	FUND	VENDOR NAME	DESCRIPTION	AMOUNT
		MO DEPT OF REVENUE	MISSOURI WITHHOLDING	447.17
			MISSOURI WITHHOLDING	443.10
		FAMILY SUPPORT PAYMENT CENTER	SMITH CASE 91316387	92.31
			SMITH CASE 91316387	92.31
		AFLAC	AFLAC CRITICAL CARE	6.78
			AFLAC CRITICAL CARE	6.78
			AFLAC PRETAX	54.53
			AFLAC PRETAX	54.44
			AFLAC-W2 DD PRETAX	71.41
			AFLAC-W2 DD PRETAX	71.29
		MISCELLANEOUS	EMMA PARKER:	30.00
			FIRST BAPTIST CHURCH:	240.00
			MICHELE MCGINNIS:	50.00
			MELISSA MORRIS:	50.00
		MIDWEST PUBLIC RISK	DENTAL	31.03
			DENTAL	30.85
			OPEN ACCESS	22.70
			HSA	312.17
			HSA	323.05
			HSA	18.13
			HSA	36.68
			VISION	15.48
			VISION	16.00
			VISION	12.12
			VISION	12.39
			VISION	1.10
			VISION	1.08
		HSA BANK	HSA - GRAIN VALLEY, MO	75.00
			HSA - GRAIN VALLEY, MO	85.00
			HSA - GRAIN VALLEY, MO	47.00
			HSA - GRAIN VALLEY, MO	69.63
		THE LINCOLN NATIONAL LIFE INSURANCE CO	JULY 2020 DISABILITY	8.27
		CITY OF GRAIN VALLEY -FLEX	FLEX - DEPENDENT CARE	195.57
			FLEX - DEPENDENT CARE	210.00
		ICMA RC	ICMA 457 %	175.33
			ICMA 457 %	174.43
			ICMA 457	536.85
			ICMA 457	593.56
			ICMA ROTH IRA	46.88
			ICMA ROTH IRA	46.88
			ICMA ROTH IRA	3.50
			ICMA ROTH IRA	3.40
		INTERNAL REVENUE SERVICE	FEDERAL WH	1,166.91
			FEDERAL WH	1,189.54
			SOCIAL SECURITY	899.51
			SOCIAL SECURITY	1,112.28
			MEDICARE	210.37
			MEDICARE	<u>260.15</u>
			TOTAL:	9,695.68
PARK ADMIN	PARK FUND	NETSTANDARD INC	NETSTANDARD CLARITY	618.00
		MISSOURI LAGERS	MONTHLY CONTRIBUTIONS	529.30
			MONTHLY CONTRIBUTIONS	526.56
		AT&T	U-VERSE PARK MAINTENANCE	69.55
		STANDARD INSURANCE CO	JULY 20 STANDARD LIFE INSU	31.20
		HAMPEL OIL INC	BULK GASOHOL/DIESEL	267.94

DEPARTMENT	FUND	VENDOR NAME	DESCRIPTION	AMOUNT
		MIDWEST PUBLIC RISK	DENTAL	3.43
			DENTAL	3.43
			DENTAL	82.96
			DENTAL	83.40
			JULY 20 DEN RECON	1.65
			JULY 20 MED RECON	53.95
			JULY 20 VSP RECON	0.55
			OPEN ACCESS	36.04
			OPEN ACCESS	78.21
			HSA	997.06
			HSA	1,033.37
			HSA	56.04
			HSA	86.03
			HSA	62.44
			HSA	126.46
		HSA BANK	HSA - GRAIN VALLEY, MO	14.61
			HSA - GRAIN VALLEY, MO	14.31
			HSA - GRAIN VALLEY, MO	220.00
			HSA - GRAIN VALLEY, MO	229.25
		THE LINCOLN NATIONAL LIFE INSURANCE CO	JULY 2020 DISABILITY	55.81
		VERIZON WIRELESS	CELLULAR SERVICE 06/19-07/	83.07
		INTERNAL REVENUE SERVICE	SOCIAL SECURITY	381.30
			SOCIAL SECURITY	376.69
			MEDICARE	89.18
			MEDICARE	88.09
			TOTAL:	6,299.88
PARKS STAFF	PARK FUND	MISSOURI LAGERS	MONTHLY CONTRIBUTIONS	391.12
			MONTHLY CONTRIBUTIONS	390.22
		ADVANCE AUTO PARTS	U JOINT	13.59
			U JOINT	13.59-
		STANDARD INSURANCE CO	JULY 20 STANDARD LIFE INSU	36.00
		RECOGNITION PLUS	ADOPT A BENCH/ TREE	128.89
		OREILLY AUTOMOTIVE INC	FBRGLS RP KT/GREEN ROLOC	23.35
		GOODYEAR COMMERCIAL TIRE	2) GY 245/75R17 WRL TRAILR	252.36
		FRY & ASSOCIATES INC	Bench Adoption	899.70
		MIDWEST PUBLIC RISK	DENTAL	35.18
			DENTAL	36.00
			DENTAL	34.56
			DENTAL	34.90
			JULY 20 DEN RECON	2.26
			JULY 20 MED RECON	88.03
			JULY 20 VSP RECON	0.88
			HSA	474.79
			HSA	492.70
			HSA	575.48
			HSA	598.00
		HSA BANK	HSA - GRAIN VALLEY, MO	150.00
			HSA - GRAIN VALLEY, MO	150.00
			HSA - GRAIN VALLEY, MO	100.00
			HSA - GRAIN VALLEY, MO	100.00
		KENNYCO INDUSTRIES	6 MONTH FIRE ALARM	48.00
		ANDERSON RENTALS & SALES	SHELTER 3 POSTS & BBQ GRIL	400.00
		THE LINCOLN NATIONAL LIFE INSURANCE CO	JULY 2020 DISABILITY	39.63
		EVERGY	701 SW EAGLES PKWY BALLFIE	117.76
			ARMSTRONG PARK 041503	95.58

DEPARTMENT	FUND	VENDOR NAME	DESCRIPTION	AMOUNT
			ARMSTRONG PARK DR	34.05
			ARMSTRONG PARK 098095	34.13
			ARMSTRONG PARK 017576	112.51
			28605 E HWY AA	57.42
			JAMES ROLLO SHELTER #2	47.92
			MAIN - ARMSTRONG SHELTER 1	23.14
			618 JAMES ROLLO CT	63.24
			ARMSTRONG PARK	144.18
			6100 S BUCKNER TARSNEY RD	91.96
			28605 E HWY AA	130.07
			618 JAMES ROLLO CT	11.52
		STANGER INDUSTRIES INC	HVAC MAINTENANCE	216.30
		INTERNAL REVENUE SERVICE	SOCIAL SECURITY	291.29
			SOCIAL SECURITY	290.34
			MEDICARE	68.13
			MEDICARE	<u>67.91</u>
			TOTAL:	7,379.50
RECREATION	PARK FUND	WALMART COMMUNITY	POOL PRODUCTS/SUPPLIES	206.92
			POOL PRODUCTS AND SUPPLIES	<u>50.39</u>
			TOTAL:	257.31
COMMUNITY CENTER	PARK FUND	BATTS COMMUNICATIONS SERVICES INC	JULY 20 MAINTENANCE	12.50
		MELODY TAYLOR	06/08-06/12 SILVERSNEAKERS	75.00
			06/15-06/22 SILVERSNEAKERS	25.00
			06/15-06/26 SILVERSNEAKERS	150.00
		MISSOURI LAGERS	MONTHLY CONTRIBUTIONS	138.38
			MONTHLY CONTRIBUTIONS	138.38
		SAMS CLUB/GEGRB	JANITORIAL SUPPLIES	140.78
		OFFICE DEPOT	PENS	9.78
		STANDARD INSURANCE CO	JULY 20 STANDARD LIFE INSU	12.00
		RICHARD CHASE	MACHINE STRIP AND WAX/REPA	269.25
		MIDWEST PUBLIC RISK	DENTAL	17.59
			DENTAL	18.00
			JULY 20 DEN RECON	0.82
			JULY 20 MED RECON	22.52
			JULY 20 VSP RECON	0.18
			HSA	287.74
			HSA	299.00
		HSA BANK	HSA - GRAIN VALLEY, MO	75.00
			HSA - GRAIN VALLEY, MO	75.00
		THE LINCOLN NATIONAL LIFE INSURANCE CO	JULY 2020 DISABILITY	14.60
		ALL STATE FIRE EQUIPMENT	SEMI-ANNUAL INSPECTION OF	227.00
		VERIZON WIRELESS	CELLULAR SERVICE 06/19-07/	43.06
		FREDAH JOHNSTON	06/09-06/11 LINE DANCING	89.00
			06/16-06/25 LINE DANCING	179.00
		EVERGY	713 MAIN ST	1,407.85
			713 MAIN #A	115.23
		INTERNAL REVENUE SERVICE	SOCIAL SECURITY	141.89
			SOCIAL SECURITY	156.73
			MEDICARE	33.17
			MEDICARE	<u>36.66</u>
			TOTAL:	4,211.11
POOL	PARK FUND	ALLIED REFRESHMENT	CONCESSION DRINKS	473.00
		SAMS CLUB/GEGRB	CONC PRODUCT & SUPPLIES	436.54

DEPARTMENT	FUND	VENDOR NAME	DESCRIPTION	AMOUNT
		WALMART COMMUNITY	POOL PRODUCTS/SUPPLIES	51.18
		OFFICE DEPOT	PENS	9.78
			SCISSORS/MOUSEPAD/BASKET/M	47.89
			SCISSORS/MOUSEPAD/BASKET/M	11.70
		HOME DEPOT CREDIT SERVICES	POOL BARRICADES	98.90
		MENARDS - INDEPENDENCE	TOWELS FOR POOL CLEANING	50.00
		MEYER LABORATORY INC	POOL SUPPLIES	474.20
		MIDWEST POOL MANAGEMENT	Pool Management Services	22,480.00
		INTERNAL REVENUE SERVICE	SOCIAL SECURITY	85.03
			SOCIAL SECURITY	288.52
			MEDICARE	19.89
			MEDICARE	67.49
			TOTAL:	24,594.12
NON-DEPARTMENTAL	TRANSPORTATION	MO DEPT OF REVENUE	MISSOURI WITHHOLDING	160.46
			MISSOURI WITHHOLDING	149.09
		FAMILY SUPPORT PAYMENT CENTER	DZEKUNSKAS CASE 41452523	30.00
			DZEKUNSKAS CASE 41452523	30.00
		AFLAC	AFLAC PRETAX	4.64
			AFLAC PRETAX	4.64
			AFLAC-W2 DD PRETAX	8.05
			AFLAC-W2 DD PRETAX	8.05
		MIDWEST PUBLIC RISK	DENTAL	17.31
			DENTAL	17.23
			OPEN ACCESS	25.23
			OPEN ACCESS	26.39
			OPEN ACCESS	26.49
			OPEN ACCESS	27.72
			HSA	60.42
			HSA	83.44
			HSA	72.52
			HSA	75.18
			HSA	76.47
			HSA	79.35
			VISION	3.10
			VISION	3.20
			VISION	1.34
			VISION	0.80
			VISION	2.19
			VISION	4.40
			VISION	5.54
			VISION	5.54
		HSA BANK	HSA - GRAIN VALLEY, MO	14.96
			HSA - GRAIN VALLEY, MO	4.94
			HSA - GRAIN VALLEY, MO	79.01
			HSA - GRAIN VALLEY, MO	85.81
		THE LINCOLN NATIONAL LIFE INSURANCE CO	JULY 2020 DISABILITY	2.58
		ICMA RC	ICMA 457 %	26.87
			ICMA 457 %	26.47
			ICMA 457	16.50
			ICMA 457	16.50
			ICMA ROTH IRA	30.00
			ICMA ROTH IRA	30.00
		INTERNAL REVENUE SERVICE	FEDERAL WH	456.31
			FEDERAL WH	419.65
			SOCIAL SECURITY	306.73

DEPARTMENT	FUND	VENDOR NAME	DESCRIPTION	AMOUNT
			SOCIAL SECURITY	293.29
			MEDICARE	71.74
			MEDICARE	<u>68.61</u>
			TOTAL:	2,958.76
TRANSPORTATION	TRANSPORTATION	A&A ELECTRICAL INC	INSTALL OUTLET FOR NEW GAR	26.30
		NETSTANDARD INC	APR DATASAFE BACKUPS	175.00
			NETSTANDARD CLARITY	370.80
			06/12-07/11 OFFICE 365	147.60
		BATTS COMMUNICATIONS SERVICES INC	JULY 20 MAINTENANCE	12.50
		FELDMANS FARM & HOME	75PK ANCHOR PINS 6"X1"X6"	10.99
			75 PK ANCHOR PINS 6"X1"X6	21.98
		MISSOURI LAGERS	MONTHLY CONTRIBUTIONS	401.78
			MONTHLY CONTRIBUTIONS	407.00
		ADVANCE AUTO PARTS	BATTERY	89.77-
			EXHAUST CLAMP	0.98
			CABIN AIR FILTER	4.28
		CUES	TRANSPORTER ASSY/CPR/60 VO	58.29
		STANDARD INSURANCE CO	JULY 20 STANDARD LIFE INSU	31.77
		OREILLY AUTOMOTIVE INC	COOLANT HOSE	2.40
			SPOT MIRROR	5.20
		ORKIN	12/18/2017 SERVICE	5.95
			ORKIN SERVICE 06/18/20	11.63
		BLUE SPRINGS WINWATER CO	36X20 WT NON-PERF/SPLIT CP	810.00
			SPLIT CPLG	125.00
		VANCE BROTHERS INC	ASPHALT	738.00
			FINE MIX	210.00
		HAMPEL OIL INC	BULK GASOHOL/DIESEL	151.06
		AUSTIN GLASS CONNECTION INC	U-419 HV URETHANE	9.00
		CONTINENTAL RESEARCH CORP	BACK PACK SPRAYER/BIG GUN	99.37
		KEY EQUIPMENT & SUPPLY CO	CROSSHEAD ASSY/GASKET	52.21
		FASTENAL COMPANY	ZIP VESTS	9.89
		HOME DEPOT CREDIT SERVICES	QUIKRETE MIX	133.56
			MULCH	52.20
		KC WHOLESALE	FUEL FILTER HOUSING	90.00
		MIDWEST PUBLIC RISK	DENTAL	13.95
			DENTAL	14.23
			DENTAL	65.39
			DENTAL	66.05
			JULY 20 DEN RECON	1.83
			JULY 20 MED RECON	244.86
			JULY 20 VSP RECON	3.52
			OPEN ACCESS	118.93
			OPEN ACCESS	124.61
			OPEN ACCESS	72.08
			OPEN ACCESS	75.60
			OPEN ACCESS	103.25
			OPEN ACCESS	108.18
			HSA	284.87
			HSA	394.16
			HSA	170.47
			HSA	116.71
			HSA	249.76
			HSA	259.23
			HSA	298.07
			HSA	309.53

DEPARTMENT	FUND	VENDOR NAME	DESCRIPTION	AMOUNT
		HSA BANK	HSA - GRAIN VALLEY, MO	29.43
			HSA - GRAIN VALLEY, MO	29.27
			HSA - GRAIN VALLEY, MO	154.24
			HSA - GRAIN VALLEY, MO	174.24
		DEVELOPERS HELPERS LLC	TOPSOIL	600.00
		KENNYCO INDUSTRIES	6 MONTH FIRE ALARM	28.80
		THE LINCOLN NATIONAL LIFE INSURANCE CO	JULY 2020 DISABILITY	41.80
		JOHN DEERE FINANCIAL	SPRINKLER/VALVE HOSE	5.59
		FIRST AID CORP	DEGREASER	23.48
		MID AMERICAN SIGNAL INC	5 SECTION CLUSTER BACKPLAT	178.78
		UNITED LABORATORIES INC	ASPHALT REMOVER	565.46
		VERIZON WIRELESS	CELLULAR SERVICE 06/19-07/	72.66
			CELLULAR SERVICE 06/19-07/	6.46
		CINTAS CORPORATION # 430	PW/WOLTZ UNIFORMS	28.73
		EVERGY	655 SW EAGLES PKWY	47.52
			618 JAMES ROLLO CT	126.49
			AA HWY & SNI-A-BAR BLVD	38.99
			702 SW EGLES PKWY	41.80
			GRAIN VALLEY ST LIGHTS	12,084.11
			618 JAMES ROLLO CT	23.04
			711 MMAIN ST CITY HALL	112.90
		INFRASTRUCTURE MANAGEMENT SERVICES LLC	PAVEMENT CONDITION ASSESS	7,271.75
		SUMNERONE INC	New Plotter	772.20
		STANGER INDUSTRIES INC	HVAC MAINTENANCE	129.78
		GEOGRAPHIC INFORMATION SERVICES	GIS Inc	1,500.00
		VIKING-CIVES MIDWEST INC	OVERPAYMENT ON CK 105000	185.00-
			CYLINDER	225.00-
			CYLINDER	450.00-
			CYLINDER	450.00
			PH30, 30-TON HEAVY DUTY PI	28.20
			FLINK QUICK LINK SWIVEL WI	425.00
		SUMMIT TRUCK GROUP	KT ORING KIT	2.80
			TEE QC/ ELBOW	12.71
			SENSOR EBP	13.32
		KLEINSCHMIDTS WESTERN STORE	HOLCOMB BOOTS	30.00
			HOLCOMB HAYMAKER HI BRN	24.99
			BYRD BOOTS	30.00
		SCHULTE SUPPLY INC	SEYMOUR S400 1.5LB MATTOCK	12.97
			NUPLA FORGED 16 TINE BOW R	14.22
		LAWN & LEISURE	AIR FILTER/CARBURETOR/ELEM	26.55
		INTERNAL REVENUE SERVICE	SOCIAL SECURITY	306.73
			SOCIAL SECURITY	293.29
			MEDICARE	71.73
			MEDICARE	68.60
			TOTAL:	32,218.88
PUBLIC HEALTH	PUBLIC HEALTH	OATS	2020 APRIL OATS	79.59
			TOTAL:	79.59
CAPITAL IMPROVEMENTS	CAPITAL PROJECTS F BAKER TILLY MUNICIPAL ADVISORS, LLC		BOND ISSUANCE ADVISORS	10,786.15
			TOTAL:	10,786.15
NON-DEPARTMENTAL	MKTPL TIF-PR#2 SPE UMB BANK		PROJECT #2 PROPERTY TAX	54,924.83
			PROJECT @2 CITY SALES	73,105.44
		CENTRAL JACKSON COUNTY FPD	PAYMENT OF 50% CJC PROPERT	3,426.77
			TOTAL:	131,457.04

DEPARTMENT	FUND	VENDOR NAME	DESCRIPTION	AMOUNT
NON-DEPARTMENTAL	MKT PL CID-PR2 SAL	UMB BANK	CID/USE	29,738.22
			CID/USE UNCAPTURED	<u>28,846.07</u>
			TOTAL:	58,584.29
DEBT SERVICE	DEBT SERVICE FUND	STANDARD & POORS	PREREFUNDED - CAP APPREC	<u>206.00</u>
			TOTAL:	206.00
NON-DEPARTMENTAL	WATER/SEWER FUND	KCMO CITY TREASURER	KC EARNINGS TAX WH	8.72
			KC EARNINGS TAX WH	8.42
		MO DEPT OF REVENUE	MISSOURI WITHHOLDING	1,078.49
			MISSOURI WITHHOLDING	1,023.72
		FAMILY SUPPORT PAYMENT CENTER	DZEKUNSKAS CASE 41452523	120.00
			DZEKUNSKAS CASE 41452523	120.00
		MO DEPT OF REVENUE	JUN 20 SALES TAX	3,913.94
			JUN 20 SALES TAX	78.28-
		AFLAC	AFLAC PRETAX	36.54
			AFLAC PRETAX	36.15
			AFLAC-W2 DD PRETAX	88.33
			AFLAC-W2 DD PRETAX	88.56
		MISCELLANEOUS SMITH-MARTENS INVEST	20-115090-02	50.00
		UNGERER, ANGELINE	20-109200-01	15.54
		GENERUX, ROBERT	20-115090-07	27.06
		KING, RACHEL	20-118300-10	65.54
		THOMAS, ROBERT	20-152190-01	15.54
		BAKER, CAROLYNE	20-199400-13	65.54
		JONES, ADAM T	20-199750-10	65.54
		KNIGHT, NICHOLAS	20-260040-01	1.37
		FOUSHEE HOMES, INC	20-623634-00	15.54
		LIGHTNER, SHERI	20-701380-09	65.54
		DAVE RICHARDS HOMEBU	20-713001-00	19.05
		MIDWEST PUBLIC RISK	DENTAL	108.54
			DENTAL	107.90
			OPEN ACCESS	100.90
			OPEN ACCESS	105.56
			OPEN ACCESS	90.82
			OPEN ACCESS	123.61
			OPEN ACCESS	129.36
			HSA	281.96
			HSA	374.38
			HSA	539.68
			HSA	630.23
			HSA	467.45
			HSA	485.03
			VISION	12.38
			VISION	12.80
			VISION	9.97
			VISION	7.48
			VISION	13.14
			VISION	21.93
			VISION	24.06
			VISION	27.99
		HSA BANK	HSA - GRAIN VALLEY, MO	109.04
			HSA - GRAIN VALLEY, MO	69.73
			HSA - GRAIN VALLEY, MO	431.97
			HSA - GRAIN VALLEY, MO	506.40
		THE LINCOLN NATIONAL LIFE INSURANCE CO	JULY 2020 DISABILITY	60.03

DEPARTMENT	FUND	VENDOR NAME	DESCRIPTION	AMOUNT
		CITY OF GRAIN VALLEY -FLEX	FLEX - DEPENDENT CARE	162.29
			FLEX - DEPENDENT CARE	159.99
		ICMA RC	ICMA 457 %	200.82
			ICMA 457 %	198.54
			ICMA 457	188.15
			ICMA 457	214.96
			ICMA ROTH IRA	143.77
			ICMA ROTH IRA	144.04
		INTERNAL REVENUE SERVICE	FEDERAL WH	3,221.13
			FEDERAL WH	3,036.14
			SOCIAL SECURITY	2,039.37
			SOCIAL SECURITY	1,971.27
			MEDICARE	476.95
			MEDICARE	<u>461.02</u>
			TOTAL:	24,321.63
WATER	WATER/SEWER FUND	A&A ELECTRICAL INC	INSTALL OUTLET FOR NEW GAR	52.60
		NETSTANDARD INC	APR DATASAFE BACKUPS	350.00
			NETSTANDARD CLARITY	741.60
			06/12-07/11 OFFICE 365	295.20
		PEREGRINE CORPORATION	20 BILL PRINT & MAIL	596.43
			20 BILL PRINT & MAIL	113.88
		BATTS COMMUNICATIONS SERVICES INC	JULY 20 MAINTENANCE	50.00
		MISSOURI LAGERS	HOLCOMB	199.84
			MONTHLY CONTRIBUTIONS	1,342.75
			MONTHLY CONTRIBUTIONS	1,347.94
		ADVANCE AUTO PARTS	EXHAUST CLAMP	1.95
			CABIN AIR FILTER	8.54
			EXHAUST CLAMP	8.37
		OFFICE DEPOT	FRESHENER/PAPER	7.74
		STANDARD INSURANCE CO	JULY 20 STANDARD LIFE INSU	99.93
		OREILLY AUTOMOTIVE INC	COOLANT HOSE	4.95
			SPOT MIRROR	10.39
			MUFFLER CLAMP	10.20
		ORKIN	12/18/2017 SERVICE	11.91
			ORKIN SERVICE 06/18/20	23.26
		HAMPEL OIL INC	BULK GASOHOL/DIESEL	302.12
		AUSTIN GLASS CONNECTION INC	U-419 HV URETHANE	18.00
		CONTINENTAL RESEARCH CORP	BACK PACK SPRAYER/BIG GUN	198.76
		KORNIS ELECTRIC SUPPLY INC	DIAGONAL STRUT POST BASE	157.96
			1/4-20 STRUT NUT/1/2IN GR	30.93
			8SDB 8 AWG SOLID BARE COPP	4.02
		KEY EQUIPMENT & SUPPLY CO	CROSSHEAD ASSY/GASKET	104.41
		FASTENAL COMPANY	ZIP VESTS	19.78
		HOME DEPOT CREDIT SERVICES	MULCH	104.40
		KC WHOLESALE	FUEL FILTER HOUSING	180.00
		MIDWEST PUBLIC RISK	DENTAL	43.38
			DENTAL	44.06
			DENTAL	205.47
			DENTAL	206.93
			JULY 20 DEN RECON	5.58
			JULY 20 MED RECON	500.38
			JULY 20 VSP RECON	6.77
			OPEN ACCESS	237.86
			OPEN ACCESS	249.22
			OPEN ACCESS	216.24

DEPARTMENT	FUND	VENDOR NAME	DESCRIPTION	AMOUNT
			OPEN ACCESS	151.20
			OPEN ACCESS	156.41
			OPEN ACCESS	240.92
			OPEN ACCESS	252.43
			HSA	664.71
			HSA	884.25
			HSA	666.18
			HSA	627.42
			HSA	929.45
			HSA	1,086.48
			HSA	911.02
			HSA	946.01
		HSA BANK	HSA - GRAIN VALLEY, MO	143.64
			HSA - GRAIN VALLEY, MO	142.83
			HSA - GRAIN VALLEY, MO	454.62
			HSA - GRAIN VALLEY, MO	512.90
		KENNYCO INDUSTRIES	6 MONTH FIRE ALARM	57.60
		ANDERSON RENTALS & SALES	CONCRETE MIXING TRAILERS	175.00
		THE LINCOLN NATIONAL LIFE INSURANCE CO	JULY 2020 DISABILITY	139.72
		JOHN DEERE FINANCIAL	SPRINKLER/VALVE HOSE	11.19
		FIRST AID CORP	DEGREASER	46.96
		VERIZON WIRELESS	CELLULAR SERVICE 06/19-07/	145.32
			CELLULAR SERVICE 06/19-07/	15.07
		CINTAS CORPORATION # 430	PW/WOLTZ UNIFORMS	57.46
		EVERGY	825 STONEBROOK DR	42.08
			1301 TYER RD UNIT A	93.19
			618 JAMES ROLLO CT	158.12
			110 SNI-A-BAR BLVD	85.91
			1301 TYER RD UNIT B	288.06
			618 JAMES ROLLO CT UNIT B	2,413.09
			618 JAMES ROLLO CT	28.80
			711 MMAIN ST CITY HALL	225.78
			1012 STONEBROOK LN	46.71
		BAKER TILLY MUNICIPAL ADVISORS, LLC	1ST HALF 2020	1,875.00
		SUMNERONE INC	New Plotter	1,544.40
		STANGER INDUSTRIES INC	HVAC MAINTENANCE	259.56
		CENTRAL POWER SYSTEMS &	ANNUAL GENERATOR MAINT	1,095.00
		VIKING-CIVES MIDWEST INC	PH30, 30-TON HEAVY DUTY PI	56.40
		TYLER TECHNOLOGIES INC	WEEMS: TRAINING	68.75
			JUL 20 MONTHLY FEES	97.00
		SUMMIT TRUCK GROUP	KT ORING KIT	5.62
			TEE QC/ ELBOW	25.44
			SENSOR EBP	26.64
		NEPTUNE TECHNOLOGY GROUP INC	TRANSMITTER ASSY	234.00
		KLEINSCHMIDTS WESTERN STORE	HOLCOMB BOOTS	60.00
			HOLCOMB HAYMAKER HI BRN	49.98
			BYRD BOOTS	60.00
		SCHULTE SUPPLY INC	SEYMOUR S400 1.5LB MATTOCK	25.93
			NUPLA FORGED 16 TINE BOW R	28.45
		LAWN & LEISURE	AIR FILTER/CARBURETOR/ELEM	53.08
		INTERNAL REVENUE SERVICE	SOCIAL SECURITY	1,019.69
			SOCIAL SECURITY	985.67
			MEDICARE	238.48
			MEDICARE	230.50
			TOTAL:	28,953.87

DEPARTMENT	FUND	VENDOR NAME	DESCRIPTION	AMOUNT
SEWER	WATER/SEWER FUND	A&A ELECTRICAL INC	INSTALL OUTLET FOR NEW GAR	52.60
		NETSTANDARD INC	APR DATASAFE BACKUPS	350.00
			NETSTANDARD CLARITY	741.60
			06/12-07/11 OFFICE 365	295.20
		CITY OF BLUE SPRINGS	AGENT/ADMIN FEES	19,532.05
		PEREGRINE CORPORATION	20 BILL PRINT & MAIL	596.44
			20 BILL PRINT & MAIL	113.88
		BATTS COMMUNICATIONS SERVICES INC	JULY 20 MAINTENANCE	50.00
		MISSOURI LAGERS	MONTHLY CONTRIBUTIONS	1,342.71
			MONTHLY CONTRIBUTIONS	1,347.92
		ADVANCE AUTO PARTS	EXHAUST CLAMP	1.95
			CABIN AIR FILTER	8.54
		OFFICE DEPOT	FRESHENER/PAPER	7.75
		CUES	TRANSPORTER ASSY/CPR/60 VO	174.89
		STANDARD INSURANCE CO	JULY 20 STANDARD LIFE INSU	99.93
		OREILLY AUTOMOTIVE INC	COOLANT HOSE	4.95
			SPOT MIRROR	10.39
		ORKIN	12/18/2017 SERVICE	11.91
			ORKIN SERVICE 06/18/20	23.27
		HAMPEL OIL INC	BULK GASOHOL/DIESEL	302.12
		AUSTIN GLASS CONNECTION INC	U-419 HV URETHANE	18.00
		CONTINENTAL RESEARCH CORP	BACK PACK SPRAYER/BIG GUN	198.76
		KEY EQUIPMENT & SUPPLY CO	CROSSHEAD ASSY/GASKET	104.41
		FASTENAL COMPANY	ZIP VESTS	19.78
		HOME DEPOT CREDIT SERVICES	MULCH	104.40
		KC WHOLESALE	FUEL FILTER HOUSING	180.00
		MIDWEST PUBLIC RISK	DENTAL	43.33
			DENTAL	44.06
			DENTAL	205.53
			DENTAL	206.92
			JULY 20 DEN RECON	5.58
			JULY 20 MED RECON	500.38
			JULY 20 VSP RECON	6.77
			OPEN ACCESS	237.85
			OPEN ACCESS	249.22
			OPEN ACCESS	216.22
			OPEN ACCESS	151.20
			OPEN ACCESS	156.40
			OPEN ACCESS	240.93
			OPEN ACCESS	252.41
			HSA	664.70
			HSA	884.25
			HSA	666.17
			HSA	627.41
			HSA	929.48
			HSA	1,086.52
			HSA	911.03
			HSA	946.02
		HSA BANK	HSA - GRAIN VALLEY, MO	143.64
			HSA - GRAIN VALLEY, MO	142.85
			HSA - GRAIN VALLEY, MO	454.61
			HSA - GRAIN VALLEY, MO	512.87
		KENNYCO INDUSTRIES	6 MONTH FIRE ALARM	57.60
		THE LINCOLN NATIONAL LIFE INSURANCE CO	JULY 2020 DISABILITY	139.72
		JOHN DEERE FINANCIAL	SPRINKLER/VALVE HOSE	11.19
		FIRST AID CORP	DEGREASER	46.96

DEPARTMENT	FUND	VENDOR NAME	DESCRIPTION	AMOUNT
		VERIZON WIRELESS	CELLULAR SERVICE 06/19-07/	145.32
			CELLULAR SERVICE 06/19-07/	15.06
		CINTAS CORPORATION # 430	PW/WOLTZ UNIFORMS	57.46
		EVERGY	925 STONE BROOK DR	23.14
			WOODLAND DR	253.80
			405 JAMES ROLLO DR	322.15
			1326 GOLFBVIEW DR	121.83
			618 JAMES ROLLO CT	158.12
			WINDING CREEK SEWER	23.23
			618 JAMES ROLLO CT	28.80
			711 MMAIN ST CITY HALL	225.78
			1201 SEYMOUR RD	23.14
			110 NW SNI-A-BAR BLVD	23.14
			1017 ROCK CREEK LN	23.14
		BAKER TILLY MUNICIPAL ADVISORS, LLC	1ST HALF 2020	1,875.00
		SUMNERONE INC	New Plotter	1,544.40
		STANGER INDUSTRIES INC	HVAC MAINTENANCE	259.56
		GEOGRAPHIC INFORMATION SERVICES	GIS Inc	3,000.00
			GIS Inc	3,000.00
		VIKING-CIVES MIDWEST INC	PH30, 30-TON HEAVY DUTY PI	56.40
		TYLER TECHNOLOGIES INC	WEEMS: TRAINING	68.75
			JUL 20 MONTHLY FEES	97.00
		SUMMIT TRUCK GROUP	KT ORING KIT	5.62
			TEE QC/ ELBOW	25.44
			SENSOR EBP	26.64
		KLEINSCHMIDTS WESTERN STORE	HOLCOMB BOOTS	60.00
			HOLCOMB HAYMAKER HI BRN	49.98
			BYRD BOOTS	60.00
		SCHULTE SUPPLY INC	SEYMOUR S400 1.5LB MATTOCK	25.93
			NUPLA FORGED 16 TINE BOW R	28.45
		LAWN & LEISURE	AIR FILTER/CARBURETOR/ELEM	53.08
		INTERNAL REVENUE SERVICE	SOCIAL SECURITY	1,019.66
			SOCIAL SECURITY	985.58
			MEDICARE	238.44
			MEDICARE	<u>230.52</u>
			TOTAL:	50,589.83
NON-DEPARTMENTAL	POOLED CASH FUND	VISA-CARD SERVICES 1325	VISA-CARD SERVICES 1325	1,247.43
		VISA-CARD SERVICES 1663	VISA-CARD SERVICES 1663	<u>328.67</u>
			TOTAL:	1,576.10

DEPARTMENT	FUND	VENDOR NAME	DESCRIPTION	AMOUNT
------------	------	-------------	-------------	--------

```

===== FUND TOTALS =====
100 GENERAL FUND                166,863.97
200 PARK FUND                   52,437.60
210 TRANSPORTATION              35,177.64
230 PUBLIC HEALTH                79.59
280 CAPITAL PROJECTS FUND       10,786.15
302 MKTPL TIF-PR#2 SPEC ALLOC   131,457.04
321 MKT PL CID-PR2 SALES/USE    58,584.29
400 DEBT SERVICE FUND           206.00
600 WATER/SEWER FUND            103,865.33
999 POOLED CASH FUND            1,576.10
-----
                                GRAND TOTAL:    561,033.71
-----

```

TOTAL PAGES: 19

SELECTION CRITERIA

SELECTION OPTIONS

VENDOR SET: 01-CITY OF GRAIN VALLEY
VENDOR: All
CLASSIFICATION: All
BANK CODE: All
ITEM DATE: 6/13/2020 THRU 7/03/2020
ITEM AMOUNT: 99,999,999.00CR THRU 99,999,999.00
GL POST DATE: 0/00/0000 THRU 99/99/9999
CHECK DATE: 0/00/0000 THRU 99/99/9999

PAYROLL SELECTION

PAYROLL EXPENSES: NO
EXPENSE TYPE: N/A
CHECK DATE: 0/00/0000 THRU 99/99/9999

PRINT OPTIONS

PRINT DATE: None
SEQUENCE: By Department
DESCRIPTION: Distribution
GL ACCTS: NO
REPORT TITLE: C O U N C I L R E P O R T
SIGNATURE LINES: 0

PACKET OPTIONS

INCLUDE REFUNDS: YES
INCLUDE OPEN ITEM: YES

CITY OF GRAIN VALLEY DESTRUCTION CERTIFICATE

The City of Grain Valley follows the rules set by the Missouri Secretary of State's Office. The Missouri Secretary of State's Office oversees document retention in Missouri's political subdivisions in accordance Missouri Revised Statutes Chapter 109, Section 255. According to the Missouri Records Retention Manual published by that office, certain records need only be retained for limited periods of time, at which point they can be destroyed.

Each City department reviewed the manual and provided the City Clerk's office with the list of documents below available for destruction per the Missouri Records Retention Manual.

<u>Retention Schedule Number</u>	<u>Type of Document</u>	<u>Quantity/Series</u>	<u>Department</u>
GS062	Employment Recruitment & Selection Records	2017	Administration: Human Resources
GS062	Employment Recruitment & Selection Records	2006	Administration: Human Resources

Approved via Consent Agenda this 13th day of July, 2020.

By:

 Chuck Johnston
 Mayor

Attest:

 Jamie Logan
 City Clerk

Staff witnessed the destruction of the above records via _____ on this _____ day of _____, 20__ in accordance with the practice outlined by the Secretary of State's office above.

This list serves as the permanent record and be attached to the minutes for this regularly scheduled Board of Aldermen meeting.



INTENTIONALLY LEFT BLANK

Ordinances

INTENTIONALLY LEFT BLANK

**CITY OF GRAIN VALLEY
BOARD OF ALDERMEN AGENDA ITEM**

MEETING DATE	06/22/2020, 7/13/2020	
BILL NUMBER	B20-15	
AGENDA TITLE	AN ORDINANCE BY THE BOARD OF ALDERMEN OF THE CITY OF GRAIN VALLEY AUTHORIZING THE CITY ADMINISTRATOR TO ENTER INTO AN EASEMENT AGREEMENT WITH HABITAT-MISSOURI, LLC FOR THE CONVEYANCE OF THE BLUE BRANCH CREEK TRAIL EASEMENT TO THE CITY	
REQUESTING DEPARTMENT	PARKS AND RECREATION	
PRESENTER	Shannon Davies, Director of Parks and Recreation	
FISCAL INFORMATION	Cost as recommended:	\$0.00
	Budget Line Item:	N/A
	Balance Available	N/A
	New Appropriation Required:	<input type="checkbox"/> Yes <input checked="" type="checkbox"/> No
PURPOSE	To designate the Blue Branch Creek Trail as a City Easement for the purpose of offering a recreational amenity that is accessible to the general public and providing long-term trail improvements and trail maintenance by city staff	
BACKGROUND	This section of trail is part of the City's Trails Master Plan. Missouri-Habitat, LLC agreed that once the construction of the Blue Branch Creek Trail was completed, they would convey this property back to the city as a non-exclusive easement, per the Restoration and Trails Contract with Missouri-Habitat, LLC entered in to back on September 9, 2013. The city will maintain this trail easement in perpetuity.	
SPECIAL NOTES	This easement is 16-feet in width and approximately 1.2 miles in length running parallel to Blue Branch Creek. Within that 16-feet is a 10-foot wide, asphalt trail.	

ANALYSIS	N/A
PUBLIC INFORMATION PROCESS	Park Board meetings Trails Master Plan Committee meetings
BOARD OR COMMISSION RECOMMENDATION	Park Board Recommends Approval
DEPARTMENT RECOMMENDATION	Parks and Recreation Staff Recommend Approval
REFERENCE DOCUMENTS ATTACHED	Ordinance, Easement Agreement

**CITY OF
GRAIN VALLEY**

**STATE OF
MISSOURI**

BILL NO. B20-15

ORDINANCE NO. _____
SECOND READING _____
FIRST READING _____

June 22, 2020 (6-0)

AN ORDINANCE BY THE BOARD OF ALDERMEN OF THE CITY OF GRAIN VALLEY, MISSOURI AUTHORIZING THE CITY ADMINISTRATOR TO ENTER INTO AN EASEMENT AGREEMENT WITH HABITAT-MISSOURI, LLC FOR THE CONVEYANCE OF THE BLUE BRANCH CREEK TRAIL EASEMENT TO THE CITY

WHEREAS, the Board of Aldermen of the City of Grain Valley is committed to providing safe, pedestrian connectivity that promotes physical fitness and healthy opportunities for the residents of our community; and

WHEREAS, the City of Grain Valley entered into a Restoration and Trails Contract with Missouri-Habitat, LLC in September of 2013 for the construction of a recreational trail at Blue Branch Creek and established for public use; and

WHEREAS, Missouri-Habitat, LLC is granting this non-exclusive, trail easement in favor of the City of Grain Valley per the stipulations outlined in the executed Restoration and Trails Contract.

NOW THEREFORE, BE IT ORDAINED by the Board of Aldermen of the City of Grain Valley, Missouri as follows:

SECTION 1: The Board of Aldermen recognize the importance of pedestrian connectivity in our community and the need to designate the Blue Branch Creek Trail as a city easement.

SECTION 2: The City Administrator is hereby authorized to enter into an easement agreement with Missouri Habitat, LLC for the conveyance of the Blue Branch Creek Trail Easement to the City of Grain Valley.

Read two times and PASSED by the Board of Aldermen this ___ day of _____, 2020, the aye and nay votes being recorded as follows:

ALDERMAN BASS _____
ALDERMAN HEADLEY _____
ALDERMAN STRATTON _____

ALDERMAN CLEAVER _____
ALDERMAN KNOX _____
ALDERMAN TOTTON _____

Mayor _____ (in the event of a tie only)

Approved as to form:

Lauber Municipal Law
City Attorney

Chuck Johnston
Mayor

ATTEST:

Jamie Logan
City Clerk

1. Title of Document: Easement Agreement
2. Date of Document: May 29, 2020
3. Grantor: Habitat-Missouri, L.L.C., a Missouri limited liability company
4. Grantor's Address: 24820 Miller Road
Harrisonville, Missouri 64701
5. Grantee: City of Grain Valley, Missouri, a municipal corporation
6. Grantee's Address: 711 Main Street
Grain Valley, Missouri 64029
7. Legal Description: See Exhibits "A" and "B", pages 6-10

EASEMENT AGREEMENT

THIS EASEMENT AGREEMENT (this “Agreement”) is made this ____ day of May, 2020, by Habitat-Missouri, L.L.C., having an address of 24820 Miller Road, Harrisonville, Missouri 64701 (“Grantor”), in favor of the City of Grain Valley, Missouri, having an address of 711 Main Street, Grain Valley, Missouri 64029 (“Grantee”).

RECITALS

A. Grantor is the fee simple owner of that certain real property located in Grain Valley, Jackson County, Missouri, legally described on Exhibit “A” attached hereto (the “Grantor’s Property”).

B. Pursuant to that certain Restoration and Trails Contract, dated as of September 9, 2013, by and between Grantor and Grantee (the “Trail Contract”), Grantor agreed to, among other things, grant in favor of Grantee an easement, 16 feet in width, to utilize certain trails and areas ancillary to such trails located upon Grantor’s Property (the “Easement Area”; the Easement Area is legally described on Exhibit “B” attached hereto).

C. Grantor desires to grant a non-exclusive easement over the Easement Area for the purpose of allowing Grantee to use such trails and areas ancillary thereto, upon the terms and conditions set forth in this Agreement and in the Trails Contract.

AGREEMENT

1.0 GRANT OF EASEMENT.

1.1 Grantor hereby grants and conveys to Grantee and Grantee’s residents, guests, invitees, agents, licensees, successors and assigns a non-exclusive easement for pedestrian and bicycle use and the operation and maintenance of the trails and the ancillary areas associated therewith, located upon the Easement Area (the “Easement”).

1.2 Grantor reserves for itself and for its guests, invitees, licensees, successors and assigns the right to occupy and utilize the Easement Area, so long Grantor and its guests, invitees, licensees, successors and assigns do so without materially interfering with the right to use, operate and maintain the Easement Area granted to Grantees hereunder.

1.3 Grantee may construct such improvements in the Easement Area as are contemplated in the Restoration and Trails Contract between the parties dated September 9, 2013. Grantor will not construct any improvements within the Easement Area without the express written consent of the Grantee. Grantor shall have no obligation to construct or maintain improvements upon any area ancillary to the trails constructed upon the Easement Area or to repair or maintain any portion of the Easement Area under this Agreement.

1.4 Neither Grantee, nor its residents, guests, invitees, agents, licensees, successors and assigns, shall remove any improvement or structure located on the Grantors’ Property, whether

now or hereafter existing and whether located within the Easement Area or otherwise, for any reason or purpose whatsoever.

1.5 Grantee shall repair, at Grantee's sole cost and expense, any damage or destruction to all or any portion of Grantor's Property, or any other item of property belonging to Grantor, whether real or personal (and whether located within the Easement Area or elsewhere on Grantor's Property), arising from or related to the use of the Easement Area by Grantee, members of the public or Grantee's residents, guests, invitees, agents, licensees, successors and assigns.

2.0 TERM.

2.1 The Easement granted herein shall be perpetual in nature and shall be binding upon the successors and assigns of Grantor. The benefit and burden of this Agreement and the covenants and agreements contained herein shall run with the land.

3.0 MISCELLANEOUS.

3.1 This Agreement may not be modified except in a writing signed by Grantor and Grantee, or their respective successors and assigns.

3.2 This Agreement, in conjunction with the Trail Contract, sets forth the complete and entire agreement between Grantor and Grantee concerning the subject matter hereof and of the Trail Contract. Except as set forth herein and in the Trails Contract, there are no covenants, promises, agreements, conditions or understandings, either oral or written, between them with respect to the subject matter hereof and of the Trails Contract other than those set forth herein and therein.

3.3 All notices pertaining to this Agreement shall be in writing sent by certified United States mail, postage prepaid, return receipt requested, or commercial overnight courier that provides tracking and proof of receipt of items mailed and addressed as set forth hereinabove. Each party shall have the right to specify that notice be addressed to any other address by giving the other party written notice thereof. This Agreement will be recorded in the office of the Recorder of Deeds for Jackson County, Missouri. Grantor will bear the cost of such recording.

3.4 This Agreement will be governed by, and construed, interpreted and enforced in accordance with, the laws of the State of Missouri.

3.5 This Agreement may be executed in counterparts, and all counterparts when taken together shall constitute one and the same original agreement.

3.6 The failure of any party to insist upon strict performance of any of the terms, covenants or conditions hereof shall not be deemed a waiver of any rights or remedies that party may have hereunder or at law or equity and shall not be deemed a waiver of any subsequent breach or default in any of such terms, covenants or conditions.

IN WITNESS WHEREOF, Grantee has caused this Agreement to be executed as of the day and year first above written.

GRANTEE:

CITY OF GRAIN VALLEY,
MISSOURI

By: _____

Name: _____

Title: _____

GRANTEE'S ACKNOWLEDGMENT:

STATE OF MISSOURI)
) ss
COUNTY OF _____)

On the _____ day of _____, 2020 before me, a Notary Public personally appeared _____, Mayor, City of Grain Valley, Missouri, to me known to be the same person described in and who executed the foregoing instrument, and acknowledged that he executed the same as his free act and deed.

IN WITNESS WHEREOF, I have hereunto set my hand and affixed my official seal the day and year last above written.

Notary Public

My Commission Expires:

EXHIBIT A

Grantor's Property

TRACT I

Tract A - Winding Creeks Estates, 2nd Plat

TRACT II

A tract of land in the Southwest Quarter of Section 34, Township 49N, Range 30W in Grain Valley, Jackson County, Missouri, described as follows:

Commencing at the Southwest corner of Section 34; thence North 01 degree, 52 minutes, 20 seconds East, along the West line of the Southwest Quarter, 1246.64 feet, to the POINT OF BEGINNING; thence South 86 degrees, 39 minutes, 27 seconds East, 446.57 feet; thence North 73 degrees, 14 minutes, 07 seconds East, 219.58 feet; North 83 degrees, 11 minutes, 28 seconds East, 186.49 feet; South 58 degrees, 35 minutes, 42 seconds East, 563.42 feet; thence South 03 degrees, 13 minutes, 50 seconds West, 198.80 feet, to a point on the existing North Right-Of-Way of SW Eagles Parkway, formerly known as Missouri State Highway "A-A"; thence North 57 degrees, 06 minutes, 37 seconds East, along the North Right-Of-Way, 84.24 feet, to the intersection of the centerline of Blue Branch Creek; thence, North and West, along the meandering of the centerline of the creek to the West fine of Section 34; thence South 01 degree, 52 minutes, 20 seconds West, along the West line, 93.74 feet, to the POINT OF BEGINNING, containing 2.5 acres, more or less.

TRACT III

A tract of land lying in Section 3, Township 48, Range 30, in the City of Grain Valley, Jackson County, Missouri, being more particularly described as follows:

Commencing at the Northeast corner of Section 3, Township 48, Range 30, in the City of Grain Valley, Jackson County, Missouri; thence North 88 degrees 06 minutes 24 seconds West, 1,996.92 feet along the North line of said Section 3; thence South 01 degree 43 minutes 06 seconds West, 273.37 feet to the Point of Beginning of this description; thence South 88 degrees 02 minutes 19 seconds, East, 1,605.79 feet; thence South 01 degree 48 minutes 13 seconds West, 104.61 feet to the centerline of Blue Branch; thence meandering Southwesterly along the centerline of Blue Branch to a point that is North 88 degrees 06 minutes 24 seconds West, 1,996.92 feet and South 01 degree 43 minutes 06 seconds West, 884.76 feet from the Northeast corner of Section 3, Township 48, Range 30; thence North 01 degree 43 minutes 06 seconds East, 611.39 feet to the Point of Beginning of this description.

TRACT IV

A tract of land lying partially in Section 3, Township 48, Range 30 and partially in Section 34, Township 49, Range 30 in the City of Grain Valley, Jackson County, Missouri and being more particularly described as follows:

Commencing at the Northeast corner of Section 3, Township 48, Range 30 in the City of Grain Valley, Jackson County, Missouri; thence North 88 degrees, 06 minutes, 24 seconds West, 1996.92 feet along the North line of said Section 3 to the point of beginning of this description; thence South 01 degree, 43 minutes, 06 seconds West, 884.76 feet to a point in the centerline of Blue Ranch; thence meandering Northwesterly along the centerline of said Blue Branch to a point that is North 88 degrees, 06 minutes, 24 West, 3,830.93 feet and North 01 degree, 53 minutes, 36 seconds East, 378.28 feet

from the Northeast corner of said Section 3, Township 48, Range 30; thence South 90 degrees, 00 minutes, 00 seconds East, 152.01; thence South 61 degrees, 07 minutes, 54 seconds East, (measured), South 61 degrees, 24 minutes, 38 seconds East (plat), 839.12; thence South 88 degrees, 06 minutes, 24 seconds East, 934.26 feet (measured), South 88 degrees 14 minutes, 36 seconds East, 225.00 feet and South 88 degrees, 06 minutes, 24 seconds East, 659.41 feet (plat), and South 88 degrees, 06 minutes, 24 seconds East, 49.64 feet (deed) to the point of beginning of this description.

EXHIBIT B

Easement Area

A TRAIL EASEMENT WITH A WIDTH OF 16.00 FEET, LYING 8.00 FEET ON BOTH SIDES OF THE CENTERLINES, WITH SAID EASEMENT LINES EXTENDING FROM AND TERMINATING AT THE RIGHT-OF-WAY LINES, DESCRIBED BELOW;

BEING A PART OF THE SOUTHWEST QUARTER OF THE SOUTHWEST QUARTER OF SECTION 35, AND PART OF THE SOUTHEAST QUARTER OF THE SOUTHWEST QUARTER OF SECTION 34, BOTH BEING IN TOWNSHIP 49, RANGE 30, JACKSON COUNTY, MISSOURI, AND PART OF THE NORTHWEST QUARTER OF THE NORTHWEST QUARTER OF SECTION 2, AND PART OF THE NORTH HALF OF THE NORTHEAST QUARTER OF SECTION 3, AND PART OF THE NORTHEAST QUARTER OF THE NORTHWEST QUARTER OF SECTION 3, ALL BEING IN TOWNSHIP 48, RANGE 30, JACKSON COUNTY, MISSOURI. BEING MORE PARTICULARLY DESCRIBED AS FOLLOWS: FROM THE SOUTHWEST CORNER OF THE SOUTHWEST QUARTER OF SECTION 35, AFORESAID, RUN THENCE NORTH 01°48'11" EAST ALONG THE WEST LINE OF SAID SOUTHWEST QUARTER OF SECTION 35, 646.82 FEET TO A POINT ON THE SOUTH RIGHT-OF-WAY LINE OF ROCK CREEK LANE, AS NOW LOCATED; THENCE SOUTH 87°59'34" EAST ALONG SAID SOUTH RIGHT-OF-WAY LINE, 1255.16 FEET TO A POINT ON THE WEST RIGHT-OF-WAY LINE OF BUCKNER TARSNEY ROAD, AS NOW LOCATED; THENCE SOUTH 1°55'59" WEST ALONG SAID WEST RIGHT-OF-WAY LINE, 164.72 FEET; THENCE SOUTH 40°39'24" WEST ALONG SAID WEST RIGHT-OF-WAY LINE, 117.57 FEET TO A POINT OF INTERSECTION WITH THE CENTERLINE OF TRAIL EASEMENT 1, BEING THE TRUE POINT OF BEGINNING OF THE EASEMENT CENTERLINE TO BE DESCRIBED; THENCE ALONG THE CENTERLINE OF TRAIL EASEMENT 1 THE FOLLOWING COURSES: SOUTH 82°35'14" WEST, 20.44 FEET; THENCE ALONG A CURVE TO THE LEFT, TANGENT TO THE LAST DESCRIBED COURSE HAVING A RADIUS OF 60.00 FEET, A CHORD BEARING OF SOUTH 69°36'10" WEST, AND AN ARC LENGTH OF 27.19 FEET; THENCE SOUTH 56°37'06" WEST, 24.47 FEET; THENCE SOUTH 70°40'04" WEST, 135.74 FEET; THENCE ALONG A CURVE TO THE RIGHT, TANGENT TO THE LAST DESCRIBED COURSE HAVING A RADIUS OF 700.00 FEET, A CHORD BEARING OF SOUTH 73°45'36" WEST, AND AN ARC LENGTH OF 75.55 FEET; THENCE SOUTH 76°51'07" WEST, 124.05 FEET; THENCE ALONG A CURVE TO THE LEFT, TANGENT TO THE LAST DESCRIBED COURSE HAVING A RADIUS OF 700.00 FEET, A CHORD BEARING OF SOUTH 73°19'43" WEST, AND AN ARC LENGTH OF 86.09 FEET; THENCE SOUTH 69°48'19" WEST, 76.45 FEET; THENCE ALONG A CURVE TO THE LEFT, TANGENT TO THE LAST DESCRIBED COURSE HAVING A RADIUS OF 250.00 FEET, A CHORD BEARING OF SOUTH 64°51'20" WEST, AND AN ARC LENGTH OF 43.19 FEET; THENCE SOUTH 59°54'21" WEST, 37.83 FEET; THENCE ALONG A CURVE TO THE RIGHT, TANGENT TO THE LAST DESCRIBED COURSE HAVING A RADIUS OF 600.00 FEET, A CHORD BEARING OF SOUTH 62°47'25" WEST, AND AN ARC LENGTH OF 60.41 FEET; THENCE SOUTH 65°40'29" WEST, 195.73 FEET; THENCE SOUTH 67°29'36" WEST, 189.39 FEET; THENCE SOUTH 69°26'25" WEST, 138.73 FEET; THENCE SOUTH 66°20'12" WEST, 144.31 FEET; THENCE SOUTH 69°29'37" WEST, 101.17 FEET; THENCE ALONG A CURVE TO THE LEFT, TANGENT TO THE LAST DESCRIBED COURSE HAVING A RADIUS OF

250.00 FEET, A CHORD BEARING OF SOUTH 59°30'13" WEST, AND AN ARC LENGTH OF 87.18 FEET; THENCE SOUTH 49°30'49" WEST, 49.06 FEET; THENCE ALONG A CURVE TO THE RIGHT, TANGENT TO THE LAST DESCRIBED COURSE HAVING A RADIUS OF 100.00 FEET, A CHORD BEARING OF SOUTH 67°16'58" WEST, AND AN ARC LENGTH OF 62.03 FEET; THENCE SOUTH 85°03'07" WEST, 29.32 FEET; THENCE ALONG A CURVE TO THE LEFT, TANGENT TO THE LAST DESCRIBED COURSE HAVING A RADIUS OF 100.00 FEET, A CHORD BEARING OF SOUTH 73°57'32" WEST, AND AN ARC LENGTH OF 38.72 FEET; THENCE ALONG A REVERSE CURVE TO THE RIGHT, HAVING A RADIUS OF 222.90 FEET, A CHORD BEARING OF SOUTH 70°11'48" WEST, AND AN ARC LENGTH OF 57.04 FEET; THENCE SOUTH 77°31'38" WEST, 19.53 FEET; THENCE ALONG A CURVE TO THE RIGHT, TANGENT TO THE LAST DESCRIBED COURSE HAVING A RADIUS OF 575.00 FEET, A CHORD BEARING OF SOUTH 85°41'41" WEST, AND AN ARC LENGTH OF 163.93 FEET; THENCE NORTH 86°08'17" WEST, 272.22 FEET; THENCE NORTH 87°24'19" WEST, 366.99 FEET; THENCE ALONG A CURVE TO THE LEFT, TANGENT TO THE LAST DESCRIBED COURSE HAVING A RADIUS OF 240.00 FEET, A CHORD BEARING OF SOUTH 72°15'33" WEST, AND AN ARC LENGTH OF 170.36 FEET; THENCE SOUTH 51°55'24" WEST, 99.39 FEET; THENCE SOUTH 61°17'47" WEST, 84.72 FEET; THENCE SOUTH 55°02'30" WEST, 122.93 FEET; THENCE SOUTH 63°39'40" WEST, 46.49 FEET; THENCE ALONG A CURVE TO THE RIGHT, TANGENT TO THE LAST DESCRIBED COURSE HAVING A RADIUS OF 115.00 FEET, A CHORD BEARING OF SOUTH 88°27'04" WEST, AND AN ARC LENGTH OF 99.51 FEET; THENCE NORTH 66°45'31" WEST, 72.26 FEET; THENCE NORTH 60°40'34" WEST, 118.82 FEET; THENCE NORTH 55°48'40" WEST, 36.78 FEET; THENCE ALONG A CURVE TO THE RIGHT, TANGENT TO THE LAST DESCRIBED COURSE HAVING A RADIUS OF 100.00 FEET, A CHORD BEARING OF NORTH 43°13'01" WEST, AND AN ARC LENGTH OF 43.96 FEET; THENCE NORTH 30°37'22" WEST, 133.42 FEET; THENCE ALONG A CURVE TO THE LEFT, TANGENT TO THE LAST DESCRIBED COURSE HAVING A RADIUS OF 200.00 FEET, A CHORD BEARING OF NORTH 39°59'37" WEST, AND AN ARC LENGTH OF 65.42 FEET; THENCE NORTH 49°21'51" WEST, 185.43 FEET; THENCE ALONG A CURVE TO THE RIGHT, TANGENT TO THE LAST DESCRIBED COURSE HAVING A RADIUS OF 300.00 FEET, A CHORD BEARING OF NORTH 36°23'07" WEST, AND AN ARC LENGTH OF 135.92 FEET TO A POINT OF INTERSECTION WITH THE CENTERLINE OF TRAIL EASEMENT 2, BEING DESIGNATED AS POINT "A"; THENCE CONTINUING ALONG SAID CENTERLINE OF TRAIL EASEMENT 1 ON A CURVE TO THE RIGHT, BEING A CONTINUATION OF THE LAST DESCRIBED COURSE HAVING A RADIUS OF 300.00 FEET, A CHORD BEARING OF NORTH 14°20'03" WEST, AND AN ARC LENGTH OF 95.00 FEET TO A POINT ON THE SOUTH RIGHT-OF-WAY LINE OF CROSS CREEK DRIVE, AS NOW LOCATED, AND BEING THE POINT OF TERMINATION OF THE CENTERLINE OF TRAIL EASEMENT 1.

AND,

BEGINNING AT THE PREVIOUSLY DESIGNATED POINT "A", BEING A POINT OF INTERSECTION OF THE CENTERLINE OF TRAIL EASEMENT 1 AND THE CENTERLINE OF TRAIL EASEMENT 2, RUN THENCE ALONG THE CENTERLINE OF TRAIL EASEMENT 2 THE FOLLOWING COURSES: SOUTH 85°07'14" WEST, 27.42 FEET; THENCE ALONG A CURVE TO THE LEFT, TANGENT TO THE LAST DESCRIBED COURSE HAVING A RADIUS OF 200.00 FEET, A CHORD BEARING OF SOUTH 77°49'12" WEST, AND AN ARC LENGTH

OF 50.97 FEET; THENCE SOUTH 70°31'09" WEST, 53.17 FEET; THENCE ALONG A CURVE TO THE RIGHT, TANGENT TO THE LAST DESCRIBED COURSE HAVING A RADIUS OF 465.00 FEET, A CHORD BEARING OF SOUTH 79°06'27" WEST, AND AN ARC LENGTH OF 139.40 FEET; THENCE SOUTH 87°41'45" WEST, 92.87 FEET; THENCE ALONG A CURVE TO THE LEFT, TANGENT TO THE LAST DESCRIBED COURSE HAVING A RADIUS OF 50.00 FEET, A CHORD BEARING OF SOUTH 70°18'25" WEST, AND AN ARC LENGTH OF 30.35 FEET; THENCE SOUTH 52°55'04" WEST, 59.13 FEET; THENCE ALONG A CURVE TO THE RIGHT, TANGENT TO THE LAST DESCRIBED COURSE HAVING A RADIUS OF 50.00 FEET, A CHORD BEARING OF SOUTH 63°26'21" WEST, AND AN ARC LENGTH OF 18.37 FEET; THENCE SOUTH 73°57'52" WEST, 36.72 FEET; THENCE ALONG A CURVE TO THE LEFT, TANGENT TO THE LAST DESCRIBED COURSE HAVING A RADIUS OF 100.00 FEET, A CHORD BEARING OF SOUTH 68°54'47" WEST, AND AN ARC LENGTH OF 17.63 FEET; THENCE SOUTH 63°51'45" WEST, 27.12 FEET; THENCE ALONG A CURVE TO THE RIGHT, TANGENT TO THE LAST DESCRIBED COURSE HAVING A RADIUS OF 75.00 FEET, A CHORD BEARING OF SOUTH 86°24'33" WEST, AND AN ARC LENGTH OF 59.03 FEET; THENCE NORTH 71°02'35" WEST, 199.33 FEET; THENCE NORTH 67°43'48" WEST, 82.86 FEET; THENCE NORTH 61°18'24" WEST, 97.68 FEET; THENCE NORTH 64°41'52" WEST, 55.57 FEET; THENCE NORTH 59°09'14" WEST, 137.52 FEET; THENCE ALONG A CURVE TO THE RIGHT, TANGENT TO THE LAST DESCRIBED COURSE HAVING A RADIUS OF 170.00 FEET, A CHORD BEARING OF NORTH 48°26'50" WEST, AND AN ARC LENGTH OF 63.53 FEET; THENCE NORTH 37°44'29" WEST, 46.89 FEET; THENCE NORTH 42°04'43" WEST, 51.36 FEET; THENCE ALONG A CURVE TO THE RIGHT, TANGENT TO THE LAST DESCRIBED COURSE HAVING A RADIUS OF 170.00 FEET, A CHORD BEARING OF NORTH 22°18'14" WEST, AND AN ARC LENGTH OF 117.34 FEET; THENCE NORTH 02°31'48" WEST, 33.59 FEET; THENCE ALONG A CURVE TO THE LEFT, TANGENT TO THE LAST DESCRIBED COURSE HAVING A RADIUS OF 300.00 FEET, A CHORD BEARING OF NORTH 06°56'13" WEST, AND AN ARC LENGTH OF 46.15 FEET; THENCE NORTH 11°20'38" WEST, 84.64 FEET; THENCE NORTH 17°17'35" WEST, 99.89 FEET; THENCE ALONG A CURVE TO THE RIGHT, TANGENT TO THE LAST DESCRIBED COURSE HAVING A RADIUS OF 135.00 FEET, A CHORD BEARING OF NORTH 01°35'53" WEST, AND AN ARC LENGTH OF 73.96 FEET; THENCE NORTH 14°05'48" EAST, 47.78 FEET; THENCE NORTH 04°08'43" EAST, 58.39 FEET; THENCE ALONG A CURVE TO THE RIGHT, TANGENT TO THE LAST DESCRIBED COURSE HAVING A RADIUS OF 50.00 FEET, A CHORD BEARING OF NORTH 26°34'58" EAST, AND AN ARC LENGTH OF 39.17 FEET; THENCE NORTH 49°01'32" EAST, 39.80 FEET; THENCE ALONG A CURVE TO THE LEFT, TANGENT TO THE LAST DESCRIBED COURSE HAVING A RADIUS OF 60.00 FEET, A CHORD BEARING OF NORTH 24°30'41" EAST, AND AN ARC LENGTH OF 51.35 FEET; THENCE NORTH 00°00'23" WEST, 196.20 FEET TO A POINT ON THE SOUTH RIGHT-OF-WAY LINE OF MISSOURI STATE ROUTE "AA", AS NOW LOCATED, AND BEING THE POINT OF TERMINATION OF THE CENTERLINE OF TRAIL EASEMENT 2.

**CITY OF GRAIN VALLEY
BOARD OF ALDERMEN AGENDA ITEM**

MEETING DATE	6/22/2020, 7/13/2020	
BILL NUMBER	B20-16	
AGENDA TITLE	AN ORDINANCE APPROVING THE FINAL PLAT OF ROSEWOOD HILLS 10TH PLAT	
REQUESTING DEPARTMENT	COMMUNITY DEVELOPMENT	
PRESENTER	MARK TROSEN, DIRECTOR	
FISCAL INFORMATION	Cost as recommended:	N/A
	Budget Line Item:	N/A
	Balance Available	N/A
	New Appropriation Required:	<input type="checkbox"/> Yes <input checked="" type="checkbox"/> No
PURPOSE	To gain final plat approval for Rosewood Hills 10 th Plat	
BACKGROUND	The preliminary plat was approved by the Planning and Zoning Commission on November 20, 2019. The property is zoned District R-1 (Single Family Residential). The Comprehensive Plan's Future Land Use Map illustrates this area as single-family residential.	
SPECIAL NOTES	None	
ANALYSIS	The final plat contains 42 lots and Tract F. The total land area is approximately 22 acres with 10.5 acres designated for common area for water detention purposes and setback from creek. The final plat for the 10 th phase substantially conforms to the approved preliminary plat. The final plat conforms to city standards and the engineering civil plans have been approved by the City Engineer.	

PUBLIC INFORMATION PROCESS	N/A
BOARD OR COMMISSION RECOMMENDATION	The Planning and Zoning Commission recommended approval at the June 10, 2020 meeting
DEPARTMENT RECOMMENDATION	Staff Recommends Approval
REFERENCE DOCUMENTS ATTACHED	Ordinance, Final Plat, Staff Report, and Application

**CITY OF
GRAIN VALLEY**

**STATE OF
MISSOURI**

BILL NO. B20-16

ORDINANCE NO. _____
SECOND READING _____
FIRST READING _____

June 22, 2020 (6-0)

AN ORDINANCE APPROVING THE FINAL PLAT OF ROSEWOOD HILLS 10th PLAT

WHEREAS, the Mayor and the Board of Aldermen are committed to the development of the City.

WHEREAS, a meeting was held on June 10, 2020 in which the Planning and Zoning Commission recommended that the Board of Aldermen approve the final plat; and

WHEREAS, the Board of Aldermen is in acceptance of the final plat, easements and right-of-way that are dedicated for public purposes.

NOW THEREFORE, BE IT ORDAINED by the Board of Aldermen of the City of Grain Valley, Missouri as follows:

SECTION 1: The final plat of Rosewood Hills 10th Plat is approved.

SECTION 2: The property legally described below as Rosewood Hills 10th Plat:

All that part of Section 22, Township 49, Range 30, in the City of Grain Valley, Jackson County, Missouri more particularly described as follows;

COMMENCING at the Southeast corner of the Northeast Quarter of said section; thence North 88 degrees 09 minutes 58 seconds West along the South line of said quarter section, a distance of 1308.37 feet to the Southeast corner of the Southwest Quarter of said Northeast Quarter section, said point being the POINT OF BEGINNING; thence North 01 degrees 23 minutes 51 seconds East along the East line of said quarter quarter section, a distance of 991.98 feet; thence North 88 degrees 05 minutes 24 seconds West, a distance of 122.91 feet; thence North 01 degrees 54 minutes 36 seconds East, a distance of 35.00 feet; thence North 88 degrees 05 minutes 24 seconds West, a distance of 620.00 feet; thence South 01 degrees 54 minutes 36 seconds West, a distance of 35.00 feet; thence North 88 degrees 05 minutes 24 seconds West, a distance of 120.00 feet; thence South 01 degrees 54 minutes 36 seconds West, a distance of 365.00 feet; thence North 88 degrees 05 minutes 24 seconds West, a distance of 183.26 feet to a point on the Northeasterly line of ROSEWOOD HILLS - 6TH PLAT; thence along said northeasterly line, as well as the Northeasterly lines of ROSEWOOD HILLS - 7TH PLAT and ROSEWOOD HILLS - 5TH PLAT, the following seven (7) courses; South 01 degrees 42 degrees 09 seconds West, a distance of 92.57 feet; thence South 34 degrees 19 minutes 54 seconds East, a distance of 537.92 feet; thence North 55 degrees 42 minutes 25 seconds East, a distance of 55.37 feet; thence South 45 degrees 20 minutes 36 seconds East, a distance of 69.21 feet; thence South 47 degrees 07

minutes 54 seconds East, a distance of 399.63 feet; thence South 56 degrees 27 minutes 56 seconds East, a distance of 159.20 feet; thence North 55 degrees 42 minutes 25 seconds East, a distance of 254.25 feet; thence North 01 degrees 12 minutes 45 seconds East, a distance of 109.02 feet to the POINT OF BEGINNING. Containing 22.17 acres.

Read two times and PASSED by the Board of Aldermen this ____ day of _____, 2020, the aye and nay votes being recorded as follows:

ALDERMAN BASS	_____	ALDERMAN CLEAVER	_____
ALDERMAN HEADLEY	_____	ALDERMAN KNOX	_____
ALDERMAN STRATTON	_____	ALDERMAN TOTTON	_____

Mayor _____ (in the event of a tie only)

Approved as to form:

Lauber Municipal Law
City Attorney

Chuck Johnston
Mayor

ATTEST:

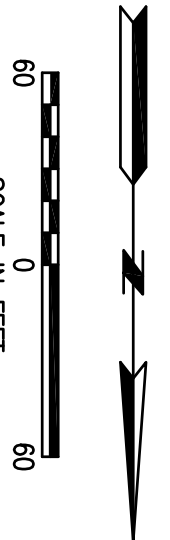
Jamie Logan
City Clerk

SURVEY NOTES:

1. All markers found were located as noted.
2. Set 5/8" iron bar with aluminum cap of each "break point" of the plat boundary.
3. All new lot corners to be set with 1/2" iron bars with plastic cap unless otherwise noted.
4. Cuts to be marked with spray permanent measurement.
5. Street C/L to be marked with spray permanent measurement.
6. The Present Plat for this survey is Document No. 20040017303 & 20080016152.
7. This Survey meets or exceeds the accuracy standards of an Urban Property Survey.
8. Bearings are based on Missouri State Plane Grid.
9. This Report by Stewart Title Company, Report No. 01109-48843, Dated August 12, 2016, was used in the preparation of this survey.
10. The 100-year flood boundary as shown was taken from FEMA MAP 1704, Flood Insurance Rate Map, Jackson County, Missouri, Incorporated Areas, Page 337 of 623, Map Number 20050303020, effective date January 20, 2017.

GENERAL NOTES:

1. Tract F shall be a "Grading, Drainage, Utility & Conservation Easement" to be owned and maintained by the Homeowner's Association.
2. Tract F shall be subject to the terms, conditions and covenants established by the Homeowner's Association.

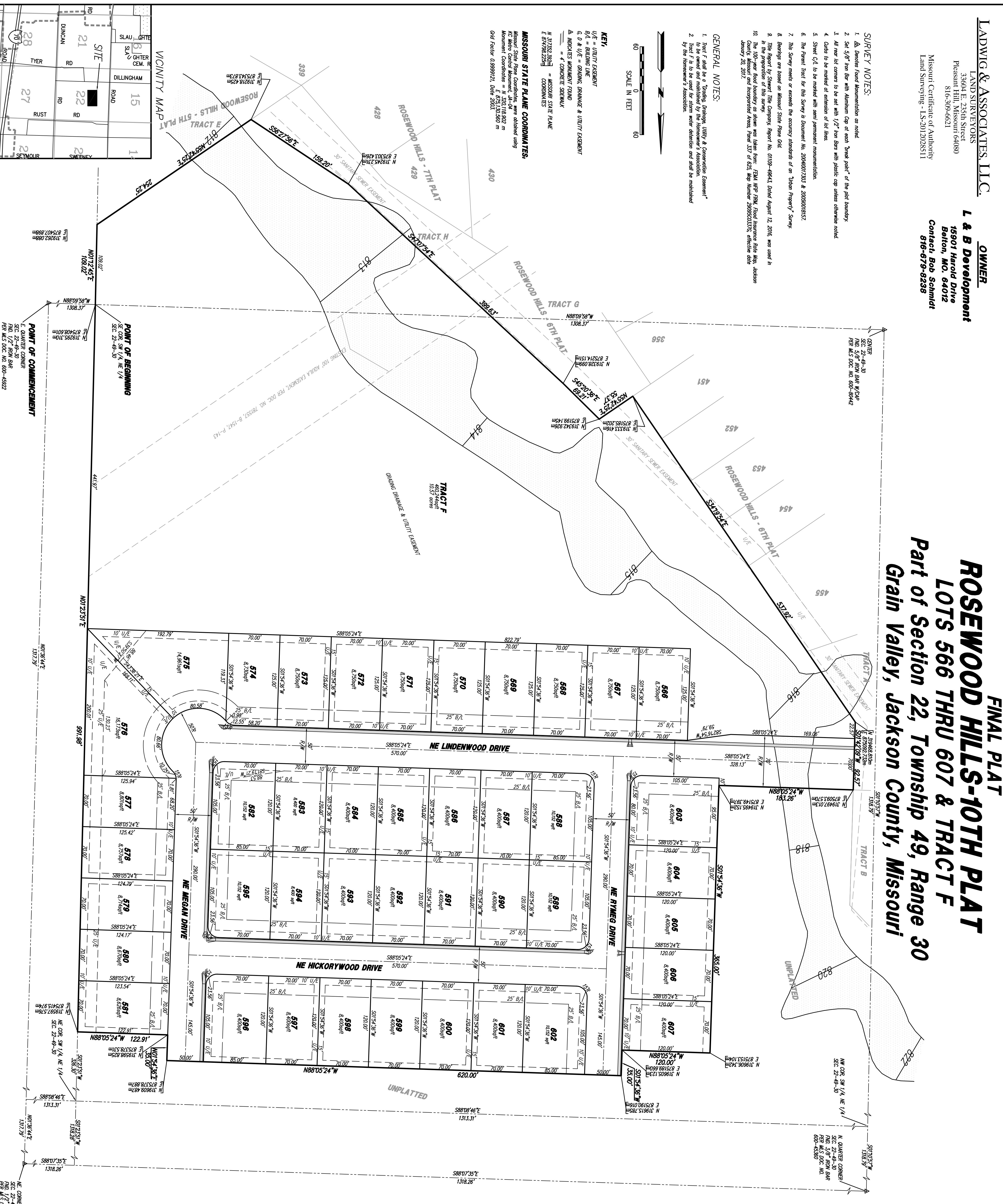


KEY:

- U/E = UTILITY EASEMENT
- B/L = BUILDING LINE
- G & D U/E = GRADING, DRAINAGE & UTILITY EASEMENT
- ▲ = MARKERS MONUMENT FOUND
- = 4" CONCRETE SIDEWALK
- N 317292.332M = MISSOURI STATE PLANE COORDINATES
- E 871942.222M = CONDOMINIUM

MISSOURI STATE PLANE COORDINATES:

Missouri State Plane Coordinates were obtained using Monument Coordinates = N 320118.922 m
E 873130.580 m
Grid Factor = 0.9999121, Date 2003.



FINAL PLAT
ROSEWOOD HILLS-10TH PLAT
LOTS 566 THRU 607 & TRACT F
Part of Section 22, Township 49, Range 30
Grain Valley, Jackson County, Missouri

PROPERTY DESCRIPTION:

All that part of Section 22, Township 49, Range 30, in the City of Grain Valley, Jackson County, Missouri, more particularly described as follows:
COMMENCING at the Southeast corner of the Northwest Quarter of said section; thence North 88 degrees 09 minutes 58 seconds West along the South line of said quarter section, a distance of 1308.17 feet to the Southeast corner of the Southwest Quarter of said quarter section, said point being the POINT OF BEGINNING; thence North 88 degrees 09 minutes 58 seconds East, a distance of 897.98 feet; thence North 88 degrees 05 minutes 24 seconds East, a distance of 1221.91 feet; thence North 01 degrees 54 minutes 36 seconds East, a distance of 35.00 feet; thence North 88 degrees 05 minutes 24 seconds West, a distance of 35.00 feet; thence North 88 degrees 05 minutes 24 seconds East, a distance of 820.00 feet; thence South 01 degrees 54 minutes 36 seconds West, a distance of 1832.26 feet to a point on the Northwest line of ROSEWOOD HILLS - 7TH PLAT and ROSEWOOD HILLS - 9TH PLAT, the following seven (7) courses: South 01 degrees 42 minutes 08 seconds West, a distance of 92.57 feet; thence South 34 degrees 19 minutes 54 seconds East, a distance of 43.75 feet; thence North 35 degrees 42 minutes 22 seconds East, a distance of 183.26 feet; thence North 47 degrees 07 minutes 54 seconds East, a distance of 396.63 feet; thence South 55 degrees 27 minutes 55 seconds East, a distance of 158.20 feet; thence North 55 degrees 42 minutes 25 seconds East, a distance of 254.25 feet; thence North 01 degrees 12 minutes 45 seconds East, a distance of 109.02 feet to the POINT OF BEGINNING, Containing 22.17 acres.

EASEMENTS:

An easement or license is hereby granted to the City of Grain Valley to locate, construct and maintain or to authorize the location, construction and maintenance of conduits, gas, water, sewer lines, poles, wires, anchors and surge drainage and all or any of them over, under and along the strips of land designated as Utility Easement or by the abbreviation "U/E" on the accompanying plat. Keys designated as Grading Easement and Drainage Easement or by the abbreviation G/E and D/E shall be reserved exclusively for the purpose of storm water drainage, grading or for the purpose of constructing, maintaining, repairing, improving and/or reconstructing the City of Grain Valley sewer, water, gas, telephone, electric and other utility lines within the City of Grain Valley. No easement hereby dedicated and there shall be no alteration of the grades or contours in said easement without the approval of the City of Grain Valley. No obstruction may be placed in said drainageway which would prevent vehicles from traveling on said drainageway for maintenance purposes. The Developer, Builder or Property Owner is prohibited from constructing or placing any structure, amenity, fence, retaining wall or landscape feature, or grading, drilling, clearing or grubbing, impeding the various other natural features, or dumping any material in the area of said easement and the City of Grain Valley shall have the authority to take in the area of said easement all or any of the above mentioned actions. The City of Grain Valley shall have the authority to take any action necessary to maintain the City of Grain Valley streets, sidewalks, and other public places. The City of Grain Valley shall have the authority to take any action necessary to maintain the City of Grain Valley streets, sidewalks, and other public places. The City of Grain Valley shall have the authority to take any action necessary to maintain the City of Grain Valley streets, sidewalks, and other public places.

STREETS:

Street right-of-way shown on the accompanying plat not heretofore dedicated to public use is hereby dedicated.
DEDICATION:
The undersigned proprietors of the above described tract of land have caused the same to be subdivided in the manner shown on the accompanying plat, which subdivision shall hereafter be known as ROSEWOOD HILLS - 10TH PLAT.
In testimony whereof, L & B Development, Inc., a Missouri Corporation, has caused these presents to be signed by its President and its Corporate Seal affixed this _____ day of _____, 2020.

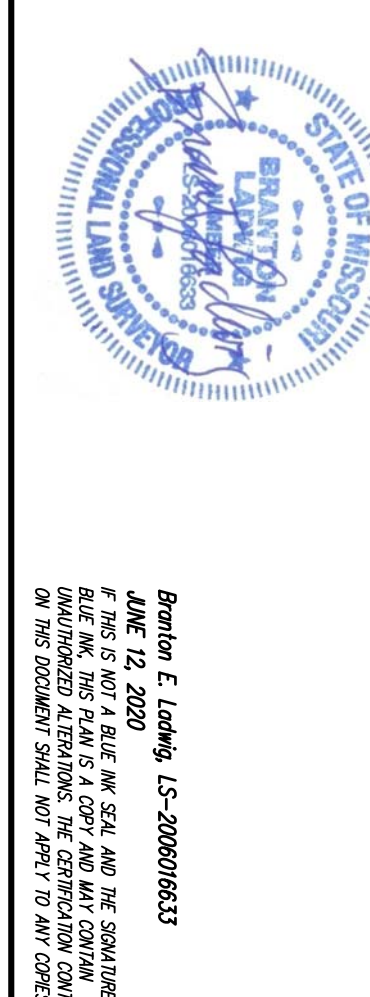
President - Larry Peltis
Secretary - Bob Schmidt

State of Missouri }
County of Jackson }
On this _____ day of _____, 2020, before me personally appeared Larry Peltis and Bob Schmidt, known to me to be the persons whose names are subscribed to the foregoing instrument, and that said instrument was signed in behalf of said Corporation by authority of its Board of Directors and that said instrument was the free act and deed of said Corporation.
In witness whereof, I have hereunto set my hand and affixed my Notarial Seal at my office the day and year first above written.

This plat of ROSEWOOD HILLS - 10TH PLAT has been submitted to and approved by the Grain Valley Planning and Zoning Commission this _____ day of _____, 2020.
Mayor - Chuck Johnson
City Clerk - Arnie Logan

Chairman - Debra Schiff
Secretary - Fern Bowling
These assessments and rights-of-way accepted by the Governing Body of Grain Valley, Missouri this _____ day of _____, 2020.
Approved by JACKSON COUNTY ASSESSOR
By _____
City Clerk - Arnie Logan

I hereby certify that the within part of ROSEWOOD HILLS - 10TH PLAT is a valid survey made or caused to be made by me or by a duly qualified and licensed surveyor as defined by the Missouri Board of Architects, Professional Engineers and Land Surveyors and the Missouri Department of Natural Resources further certify that the Section and Section Subdivision corner monuments and other physical evidence of the plat are in accordance with the provisions of the Missouri Surveying and Mapping Act, Chapter 248, RSMo, and that the plat is a true and correct copy of the original plat as recorded in the public records of the State of Missouri. My commission expires on _____.



Boyanne E. Ludwig, LS-2006016513
June 12, 2020
If this is not a BLUE INK SIGNATURE, THE SIGNATURE IS UNAUTHORIZED. ALTERNATELY, THE CERTIFICATION CONTAINED ON THIS DOCUMENT SHALL NOT APPLY TO ANY COPIES.

INTENTIONALLY LEFT BLANK

**BOA Staff Report
Final Plat – Rosewood Hills – 10th Plat
June 22, 2020**

QUICK FACTS:

L&B Development is the property owner and developer.
The property is zoned District R-1 (Single Family Residential).
The total number of lots is 42 and Tract F.
The total land area is approximately 22 acres with 10.5 acres designated for common area for water detention purposes and setback from creek.
The average density of development is 1.91 lots per acre.
The Comprehensive Plan's Future Land Use Map illustrates this area as single-family residential development.
The preliminary plat was approved by the Commission on November 20, 2019.
The final plat for the 10th phase substantially conforms to the approved preliminary plat.

ACTION:

For the Planning & Zoning Commission to approve the final plat for Rosewood Hills – 10th plat.

ANALYSIS:

To access this property, NW Lindenwood Drive will be extended, and a new double cell box culvert will be constructed in the Swiney Branch Tributary within the existing FEMA designated flood hazard area.

This street extension will be the only ingress/egress access to this proposed development area at this time. The box culvert will be wide enough to accommodate three lanes. The third lane will be striped with flexible delineators to identify this lane for emergency response vehicles. The Central Jackson County Fire Protection District has approved this design.

In Rosewood Hills – 9th Plat, Crestwood Drive was proposed to be extended through the Swiney Branch Tributary and therefore, a temporary cul-de-sac was constructed. Since that is no longer being proposed, construction drawings for permanent cul-de-sac configuration for NW Crestwood in the 9th plat was submitted. A final (minor) plat has been filed to illustrate the new right-of-way and remaining tract.

PLANNING AND ZONING COMMISSION:

At the June 10, 2020, the Commission reviewed the final plat and voted to recommend approval to the BOA.

STAFF RECOMMENDATION:

Staff recommends approval of the final plat for Rosewood Hills 10th phase.

INTENTIONALLY LEFT BLANK

42 Lots
566-603



Grain Valley
Come Home To Opportunity

711 Main Street
Grain Valley, MO 64029
816.847.6220
816.847.6206 fax
www.cityofgrainvalley.org

PLANNING & ZONING APPLICATION

PROJECT INFORMATION

Location: Lindenwood Dr. extension to the East
Subdivision: Rosewood Hills Lot #: _____ Zoning District: Residential
Description of Request: Approval of Rosewood Hills Plat Phase 10

APPLICANT INFORMATION

Name: Robert Schmidt
Company: L & B Development
Address: 1912 Harold Dr. Raymore Mo 64083
Telephone: 816-679-8238 Fax: _____ E-mail: rymeg@att.net
Property Owner: L & B Development (Robert Schmidt & Larry Potts)
Additional Contact(s): _____

Type of Application: Check Type & Submit Corresponding Requirements	Submittal Requirement List:
<input type="checkbox"/> Rezoning 1 • 2 • 5 • 10 • 11 • 14	1 Legal description of subject property
<input type="checkbox"/> Ordinance Amendment 10	2 Map depicting general location of site
<input type="checkbox"/> Special/Conditional Use Permit 1 • 2 • 10 • 11 • 14	3 Summary Site Analysis depicting current character of site
<input type="checkbox"/> Temporary Use Permit 2 • 10 • 14	4 Preliminary Plat (3 full size copies)
<input type="checkbox"/> Preliminary Plat 1 • 3 • 4 • 14	5 Preliminary Development/ Site Plan (6 copies)
<input checked="" type="checkbox"/> Final Plat/ Lot Split 1 • 6 • 12 • 13 • 14 • 15	6 Final Plat (6 copies)
<input type="checkbox"/> Preliminary Development/Site Plan 1 • 3 • 5 • 8 • 9 • 14	7 Final Development/ Site Plan (6 copies)
<input type="checkbox"/> Final Development/Site plan 1 • 7 • 8 • 9 • 14 • 15	8 Landscaping Plan (6 copies)
<input type="checkbox"/> Site Plan 1 • 7 • 8 • 9 • 12 • 14 • 15	9 Building Elevations (6 copies)
<input type="checkbox"/> Vacation of Right-of-way or Easement 1 • 14 • 16 • 17	10 Written description of the proposal
<input type="checkbox"/> Future Land Use Map (Refer to page 9)	11 List of property owners within 185 feet
Note: Include at least one 8 ½ x 11 copy of all drawings and plans with all applications.	12 Construction plans for all public works improvements (6 copies)
	13 Copies of tax certificates from City and County
	14 Proof of ownership or control of property (deed, contract, lease) or permission from property owner
	15 Off-site easements if necessary
	16 Survey of vacation area
	17 Utility Comment Form - City will provide form

Note: Applications must be completed in their entirety and all submittal requirements must be submitted at the time the application is submitted. Additional submittals may be requested as provided for in the Grain Valley City Code.]

The applicant hereby agrees that all information is provided as required with this application and the City Code:

Applicant's Signature

Date

5/8/20

Applicant's Signature

Date

INTENTIONALLY LEFT BLANK

**CITY OF GRAIN VALLEY
BOARD OF ALDERMEN AGENDA ITEM**

MEETING DATE	6/22/2020, 7/13/2020	
BILL NUMBER	B20-17	
AGENDA TITLE	AN ORDINANCE APPROVING THE FINAL PLAT OF ROSEWOOD HILLS – 9TH PLAT, PHASE A, TRACT C1	
REQUESTING DEPARTMENT	COMMUNITY DEVELOPMENT DEPARTMENT	
PRESENTER	MARK TROSEN, DIRECTOR	
FISCAL INFORMATION	Cost as recommended:	N/A
	Budget Line Item:	N/A
	Balance Available	N/A
	New Appropriation Required:	<input type="checkbox"/> Yes <input checked="" type="checkbox"/> No
PURPOSE	To gain final plat approval for Rosewood Hills-9 th Plat, Phase A, Tract C1	
BACKGROUND	With approval of final plat for Rosewood Hills 10 th Plat, this plat is needed to dedicate additional right-of-way to convert the existing temporary cul-de-sac to a permanent cul-de-sac for NW Crestwood.	
SPECIAL NOTES	None	
ANALYSIS	In Rosewood Hills-9 th Plat, Crestwood Drive was proposed to be extended through the Swiney Branch Tributary and therefore, a temporary cul-de-sac was constructed. Since that is longer being proposed, construction drawings for permanent cul-de-sac configuration for NW Crestwood in the 9 th plat were submitted. The City Engineer has approved the engineering/construction plans.	
PUBLIC INFORMATION PROCESS	N/A	

BOARD OR COMMISSION RECOMMENDATION	The Planning and Zoning Commission recommended approval at the June 10, 2020 meeting.
DEPARTMENT RECOMMENDATION	Staff Recommends Approval
REFERENCE DOCUMENTS ATTACHED	Ordinance, Final Plat, Staff Report, Application

**CITY OF
GRAIN VALLEY**

**STATE OF
MISSOURI**

BILL NO. B20-17

ORDINANCE NO. _____
SECOND READING _____
FIRST READING _____

June 22, 2020 (6-0)

**AN ORDINANCE APPROVING THE FINAL PLAT OF ROSEWOOD HILLS – 9th
PLAT, PHASE A, TRACT C1**

WHEREAS, the Mayor and the Board of Aldermen are committed to the development of the City; and

WHEREAS, a meeting was held on June 10, 2020 in which the Planning and Zoning Commission recommended that the Board of Aldermen approve the final plat; and

WHEREAS, the Board of Aldermen is in acceptance of the final plat, easements and right-of-way that are dedicated for public purposes.

NOW THEREFORE, BE IT ORDAINED by the Board of Aldermen of the City of Grain Valley, Missouri as follows:

SECTION 1: The final plat of Rosewood Hills-9th Plat, Phase A, Tract C1 is approved.

SECTION 2: The property legally described below as Rosewood Hills-9th Plat, Phase A, Tract C1:

All of Tracts C and D, Rosewood Hills - 9th Plat, Phase A, a subdivision in the City of Grain Valley, including the Right-of-Way of NW Crestwood Drive lying between said Tracts C and D, all in the City of Grain Valley, Jackson County, Missouri. Containing 66,701.48 sq.ft.

Read two times and PASSED by the Board of Aldermen this ___ day of _____, 2020, the aye and nay votes being recorded as follows:

ALDERMAN BASS _____
ALDERMAN HEADLEY _____
ALDERMAN STRATTON _____

ALDERMAN CLEAVER _____
ALDERMAN KNOX _____
ALDERMAN TOTTON _____

Mayor _____ (in the event of a tie only)

Approved as to form:

Lauber Municipal Law
City Attorney

Chuck Johnston
Mayor

ATTEST:

Jamie Logan
City Clerk

INTENTIONALLY LEFT BLANK

BOA Staff Report
Final (Minor) Plat – Rosewood Hills – 9th Plat, Phase A, Tract C1
June 22, 2020

QUICK FACTS:

L&B Development is developer.

Rosewood Hills Homes Association, Inc. is the property owner of the tract

The property is zoned District R-1 (Single Family Residential).

The property description is approximately 66,700 square feet.

The Comprehensive Plan's Future Land Use Map illustrates this area as single-family residential development.

With approval of final plat for Rosewood Hills – 10th phase, this plat is needed to dedicate additional right-of-way to convert the existing temporary cul-de-sac to a permanent cu-de-sac.

ACTION:

For the Planning & Zoning Commission to approve the final (minor) plat for Rosewood Hills – 9th, Phase A, Tract C1.

ANALYSIS:

In Rosewood Hills – 9th Plat, Crestwood Drive was proposed to be extended through the Swiney Branch Tributary and therefore, a temporary cul-de-sac was constructed. Since that is no longer being proposed, construction drawings for permanent cul-de-sac configuration for NW Crestwood in the 9th plat were submitted.

The City Engineer has approved the engineering/construction plans.

This final (minor) plat was filed to illustrate the new right-of-way and remaining tract.

PLANNING AND ZONING COMMISSION:

At the June 10, 2020, the Commission reviewed the final plat and voted to recommend approval to the BOA.

STAFF RECOMMENDATION:

Staff recommends approval of the final (minor) plat for Rosewood Hills 9th plat, Phase A, Tract C1.

INTENTIONALLY LEFT BLANK

2020-0263



711 Main Street
Grain Valley, MO 64029
816.847.6220
816.847.6206 fax
www.cityofgrainvalley.org

PLANNING & ZONING APPLICATION

PROJECT INFORMATION

Location: East of Rosewood Drive and NW Crestwood Drive Intersection
Subdivision: Rosewood Hills Lot #: _____ Zoning District: Residential
Description of Request: Minor plat for Rosewood 9th plat to build a culdesac

APPLICANT INFORMATION

Name: Robert Schmidt
Company: L & B Development, Inc.
Address: 1912 Harold Dr.
Telephone: 816-679-8238 Fax: _____ E-mail: rymeg@att.net
Property Owner: L & B Development
Additional Contact(s): _____

Type of Application: Check Type & Submit Corresponding Requirements	Submittal Requirement List:	
<input type="checkbox"/> Rezoning 1 • 2 • 5 • 10 • 11 • 14	1	Legal description of subject property
<input type="checkbox"/> Ordinance Amendment 10	2	Map depicting general location of site
<input type="checkbox"/> Special/Conditional Use Permit 1 • 2 • 10 • 11 • 14	3	Summary Site Analysis depicting current character of site
<input type="checkbox"/> Temporary Use Permit 2 • 10 • 14	4	Preliminary Plat (3 full size copies)
<input type="checkbox"/> Preliminary Plat 1 • 3 • 4 • 14	5	Preliminary Development/ Site Plan (6 copies)
<input checked="" type="checkbox"/> Final Plat/ Lot Split 1 • 6 • 12 • 13 • 14 • 15 (Minor)	6	Final Plat (6 copies)
<input type="checkbox"/> Preliminary Development/Site Plan 1 • 3 • 5 • 8 • 9 • 14	7	Final Development/ Site Plan (6 copies)
<input type="checkbox"/> Final Development/Site plan 1 • 7 • 8 • 9 • 14 • 15	8	Landscaping Plan (6 copies)
<input type="checkbox"/> Site Plan 1 • 7 • 8 • 9 • 12 • 14 • 15	9	Building Elevations (6 copies)
<input type="checkbox"/> Vacation of Right-of-way or Easement 1 • 14 • 16 • 17	10	Written description of the proposal
<input type="checkbox"/> Future Land Use Map (Refer to page 9)	11	List of property owners within 185 feet
Note: Include at least one 8 1/2 x 11 copy of all drawings and plans will all applications.	12	Construction plans for all public works improvements (6 copies)
	13	Copies of tax certificates from City and County
	14	Proof of ownership or control of property (deed, contract, lease) or permission from property owner.
	15	Off-site easements if necessary
	16	Survey of vacation area
	17	Utility Comment Form - City will provide form

[Note: Applications must be completed in their entirety and all submittal requirements must be submitted at the time the application is submitted. Additional submittals may be requested as provided for in the Grain Valley City Code.]

The applicant hereby agrees that all information is provided as required with this application and the City Code:
Applicant's Signature: Robert Schmidt Date: 5/19/20

Applicant's Signature _____ Date _____

PAID
5-19-20
JW

INTENTIONALLY LEFT BLANK

Resolutions

INTENTIONALLY LEFT BLANK

**CITY OF GRAIN VALLEY
BOARD OF ALDERMEN AGENDA ITEM**

MEETING DATE	7/13/2020	
BILL NUMBER	R20-36	
AGENDA TITLE	A RESOLUTION AUTHORIZING THE ALLOCATION OF THE CITY OF GRAIN VALLEY 2020 EMERGENCY MANAGEMENT CONTRIBUTION TO THE CENTRAL JACKSON COUNTY FIRE PROTECTION DISTRICT	
REQUESTING DEPARTMENT	Administration	
PRESENTER	Ken Murphy, City Administrator	
FISCAL INFORMATION	Cost as recommended:	\$14,333.00
	Budget Line Item:	230-33-74300
	Balance Available:	\$25,519
	New Appropriation Required:	<input type="checkbox"/> Yes <input checked="" type="checkbox"/> No
PURPOSE	To ensure Grain Valley is prepared for any emergency situations that may occur	
BACKGROUND	The Central Jackson County Emergency Management Agency (CJCEMA) is a cooperative effort between the cities of Grain Valley, Blue Springs and Lake Tapawingo in conjunction with the Central Jackson County Fire Protection District	
SPECIAL NOTES	This was a budgeted item in the approved 2020 FY budget	

ANALYSIS	Participating in the CJCEMA is essential to ensure that in the case of an emergency situation, the City will be in the best position possible to deal with anything that may happen. Being a part of this group allows Grain Valley to plan for and react to an emergency or disaster situation in more of a regional manner if necessary.
PUBLIC INFORMATION PROCESS	N/A
BOARD OR COMMISSION RECOMMENDATION	N/A
DEPARTMENT RECOMMENDATION	Staff Recommends Approval
REFERENCE DOCUMENTS ATTACHED	Resolution and CJCEMA Invoice

CITY OF
GRAIN VALLEY

STATE OF
MISSOURI

July 13, 2020

RESOLUTION NUMBER

R20-36

**A RESOLUTION AUTHORIZING THE ALLOCATION OF THE CITY OF
GRAIN VALLEY 2020 EMERGENCY MANAGEMENT CONTRIBUTION TO THE
CENTRAL JACKSON COUNTY FIRE PROTECTION DISTRICT**

WHEREAS, the Cities of Grain Valley, Blue Springs and Lake Tapawingo in conjunction with the Central Jackson County Fire Protection District formed the Central Jackson County Emergency Management Agency (CJCEMA); and

WHEREAS, the CJCEMA works collectively to plan and prepare for any imaginable emergency situation; and

WHEREAS, the Board of Aldermen support the CJCEMA to provide the highest level of protection for the citizens of Grain Valley; and

WHEREAS, the Board of Aldermen acknowledge the benefits of the City's involvement in the CJCEMA; and

WHEREAS, the City of Grain Valley, Missouri intends to continue its participation in the CJCEMA.

NOW THEREFORE, BE IT RESOLVED by the Board of Aldermen of the City of Grain Valley, Missouri as follows:

SECTION 1: The City Administrator is authorized to allocate the necessary funds for Grain Valley's contribution to the Central Jackson County Emergency Management Agency for 2020.

PASSED and APPROVED, via voice vote, (-_-) this ____ Day of ____, 2020.

Chuck Johnston
Mayor

ATTEST:

Jamie Logan
City Clerk

INTENTIONALLY LEFT BLANK



CENTRAL JACKSON COUNTY FIRE PROTECTION DISTRICT

805 NE Jefferson Street, Blue Springs, MO 64014

Phone: (816) 229-2522 Fax (816) 229-5110

DATE: February 28, 2020
INVOICE #: 2020-2

City of Grain Valley
Attn: Ken Murphy, City Administrator
711 Main Street
Grain Valley, MO 64029

DESCRIPTION	AMOUNT
FY 2020 Emergency Management Agency Contribution	\$ 14,333.00
TOTAL	\$ 14,333.00

Make all checks payable to Central Jackson County F.P.D.
If you have any questions concerning this invoice, contact our Accounting Dept. 816-229-2522

INTENTIONALLY LEFT BLANK

**CITY OF GRAIN VALLEY
BOARD OF ALDERMEN AGENDA ITEM**

MEETING DATE	7/13/2020	
BILL NUMBER	R20-37	
AGENDA TITLE	A RESOLUTION BY THE BOARD OF ALDERMAN AUTHORIZING THE CITY ADMINISTRATOR TO ENTER INTO AN AGREEMENT WITH JACKSON COUNTY, MISSOURI FOR DISTRIBUTION OF CORONAVIRUS RELIEF FUNDS IN THE AMOUNT OF \$865,000 FOR THE 2020 BUDGET YEAR	
REQUESTING DEPARTMENT	Administration	
PRESENTER	Ken Murphy, City Administrator	
FISCAL INFORMATION	Cost as recommended:	Not Applicable
	Budget Line Item:	Various
	Balance Available:	Not Applicable
	New Appropriation Required:	<input checked="" type="checkbox"/> Yes <input type="checkbox"/> No
PURPOSE	To allow Grain Valley to access federally provided funds to cover costs associated with the Coronavirus pandemic	
BACKGROUND	The CARES Act established the Coronavirus Relief Fund to assist State, Local, and Tribal governments navigating the impact of the COVID-19 outbreak. Jackson County, Missouri was provided funding from the federal government and has determined to split the funds to cities based on population. Grain Valley is slated to received \$865,000.	

SPECIAL NOTES	Funding will provide relief from costs associated with technology and software upgrades, facility safety measures, personnel costs related to the virus, and the administration of the Coronavirus Relief Fund. Due to the amount of funding, a single audit will be required.
ANALYSIS	N/A
PUBLIC INFORMATION PROCESS	N/A
BOARD OR COMMISSION RECOMMENDATION	N/A
DEPARTMENT RECOMMENDATION	Staff Recommends Approval
REFERENCE DOCUMENTS ATTACHED	Resolution, CARES Act Distribution Agreement and Coronavirus Relief Fund Budget

**CITY OF
GRAIN VALLEY**

**STATE OF
MISSOURI**

July 13, 2020

RESOLUTION NUMBER

R20-37

A RESOLUTION BY THE BOARD OF ALDERMAN AUTHORIZING THE CITY ADMINISTRATOR TO ENTER INTO AN AGREEMENT WITH JACKSON COUNTY, MISSOURI FOR DISTRIBUTION OF CORONAVIRUS RELIEF FUNDS IN THE AMOUNT OF \$865,000 FOR THE 2020 BUDGET YEAR

WHEREAS, Jackson County, Missouri received Coronavirus Relief Funds from the United States government CARES Act and has determined the best way to appropriate funds is based off population size;

WHEREAS, Grain Valley has been allocated \$865,000 from the Coronavirus Relief Funds to be used to navigate the impact of the COVID-19 outbreak;

WHEREAS, the funds can be used to cover non budgeted but necessary expenses incurred from March 1, 2020 to December 30, 2020 due to the public health emergency;

WHEREAS, the guidance on use of the funds also allows for personnel costs of substantially dedicated employees to be covered in full, regardless of pre-determined budget allocations.

NOW THEREFORE, BE IT RESOLVED by the Board of Aldermen of the City of Grain Valley, Missouri as follows:

SECTION 1: The City Administrator is authorized to enter into an agreement with Jackson County, Missouri for the distribution of the Coronavirus Relief Funds in the amount of \$865,000.

SECTION 2: The City of Grain Valley, Missouri intends to utilize the funds in the following manner:

Administration	\$14,000.00
Citizen Relief	\$21,500.00
Facility Upgrades	\$5,112.42
Substantial Personnel Costs	\$690,014.00
Supplies (Protective Equipment/Cleaning)	\$3,431.64
Technology	\$126,345.94
Unanticipated COVID Expenses	\$4,596.00
Total	\$865,000.00

PASSED and APPROVED, via voice vote, (-_-) this __th Day of ____, 2020.

Chuck Johnston
Mayor

ATTEST:

Jamie Logan
City Clerk

County Agreement for Distribution of CARES Act Funds

This County Agreement for Distribution of CARES Act Funds (“Agreement”), entered into on the date set forth below by and between the undersigned County, of the State of Missouri (“County”), and the undersigned Recipient (“Recipient”) an entity which operates within said County (collectively the “Parties”).

RECITALS

WHEREAS, the United States government has allocated funds to the County from the Coronavirus Relief Fund set forth under section 601(a) of the Social Security Act, as amended by section 5001 of the Coronavirus Aid, Relief, and Economic Security Act (“CARES Act”); and

WHEREAS, Recipient has requested and applied for available funds from the County to cover costs incurred due to the public health emergency with respect to the Coronavirus Disease 2019 (COVID-19), as set forth in the Spending Plan/Budget, attached as Exhibit A (“Budget”) and incorporated herein by reference; and

WHEREAS, through said Budget, Recipient has represented, warranted and attested to the County that it meets all state and federal requirements for receipt of a portion of the available funds (the “Funds”) as described in said Budget; and

WHEREAS, County has reviewed said Budget and has made an award decision via Ordinance/Resolution ___ dated ____; and

NOW THEREFORE, for and in consideration of the mutual covenants and agreements herein set forth, and for other good and valuable consideration, receipt of which is hereby acknowledged, the parties hereby enter into the following agreement:

1. Purpose. The purpose of this Agreement is to distribute funds from the County to Recipient to cover Recipient’s costs and expenses incurred due to COVID-19 (the “Funds”). Recipient agrees the Funds shall be used only to cover those costs that: (i) are necessary expenditures incurred due to the public health emergency with respect to the Coronavirus Disease 2019 (COVID-19); (ii) were not accounted for in Recipient’s budget most recently approved as of March 27, 2020; and (iii) were incurred during the period that begins on March 1, 2020, and ends on December 30, 2020. The Funds shall be used exclusively in accordance with the provisions contained in this Agreement in conformance with state and federal law and for no other purpose. Further, Recipient agrees that Funds shall be used exclusively for the purposes described in the Budget. Recipient shall only use Funds for the purposes set forth in Exhibit A. Recipient understands and agrees that any deviations from the use of Funds, as described in the Budget must have prior approval from the County, which is subject to the sole and absolute discretion of the County.

2. Funding Source. The County is authorized to distribute the Funds described in this Agreement pursuant to section 601(a) of the Social Security Act, as amended by section 5001 of the Coronavirus Aid, Relief, and Economic Security Act (“CARES Act”).

3. Representations and Warranties by Recipient. Recipient represents, warrants, and certifies that:

a. The undersigned individual has all necessary authority on behalf of the Recipient to request payment from the County from the allocation of funds to the County from the Coronavirus Relief Fund as created in the CARES Act.

b. Recipient understands and agrees that the County will rely on Exhibit A and this Agreement as material representations in awarding and making a payment of Funds to Recipient. Recipient affirms that the information set forth in the Budget is true, complete, and accurate and affirms the statements made in the Budget as of the date of this Agreement.

c. Recipient expressly represents and warrants that it is eligible to receive the Funds in accordance with state and federal law and that the Funds will be used exclusively for lawful expenditures pursuant to the CARES Act and specifically as described in Exhibit A.

d. Recipient represents, warrants, and agrees that the proposed uses of the Funds provided as a payment shall be used only to cover those costs that: (i) are necessary expenditures incurred due to the public health emergency with respect to the Coronavirus Disease 2019 (COVID-19); (ii) were not accounted for in its budget most recently approved as of March 27, 2020; and (iii) were incurred during the period that begins on March 1, 2020, and ends on December 30, 2020.

e. Recipient acknowledges, understands, and agrees that Funds provided as payment from the County to Recipient pursuant to this Agreement must adhere to official federal guidance issued or to be issued on what constitutes a necessary expenditure. Any funds expended by Recipient in any manner that does not adhere to official federal guidance shall be returned to the County.

f. If Recipient is a local government entity, public entity, or political subdivision of the state, any funds provided pursuant to this Agreement shall not be used as a revenue replacement for lower than expected tax or other revenue collections.

g. Funds received pursuant to this Agreement shall not be used for expenditures for which Recipient has received any other emergency COVID-19 supplemental funding (whether state, federal or private in nature) for that same cost or expense.

h. Recipient may not use funds received pursuant to this Agreement to make a grant to any other local government, public entity, political subdivision, non-profit corporation, corporation, limited liability company, or other business entity, or individual unless the specific use of funds was expressly described in the Budget, and such grant is used solely for necessary expenditures incurred due to the public health emergency with respect to the Coronavirus Disease 2019 (COVID-19), that were not accounted for in the budget most recently approved as of March 27, 2020, and that were incurred during the period that begins on March 1, 2020, and ends on December 30, 2020. In such event, Recipient is responsible for all documentation requirements set forth in this Agreement.

i. Recipient certifies by entering into this Agreement that neither it nor its principals are presently debarred, suspended, proposed for debarment, declared ineligible or voluntarily excluded from entering into this Agreement by any federal or state department or agency. The term “principal” for purposes of this Agreement is defined as an officer, director, owner, partner, key employee or other person with primary management or supervisory responsibilities, or a person who has a critical influence on or substantive control over the operations of Recipient.

j. Recipient agrees to promptly repay all funds paid to it under this Agreement should it be determined either that it was ineligible to receive the funds, or it made any material misrepresentation on its Application.

k. Recipient certifies that the Funds shall not be used for any unlawful purpose, including but not limited to: (i) as a revenue replacement for lower than expected tax or other revenue collection; (ii) for expenditures for which Recipient is already receiving other emergency COVID-19 supplemental funding (whether state, federal or private in nature) for the same expense; or (iii) to engage in any other activity that is illegal under federal, state or local law.

l. Recipient understands and agrees that the County is under no obligation to distribute any additional funds other than as provided in the Agreements, even if Recipient believes circumstances have changed and Recipient requests additional funds.

4. Award and Distribution of Funds; Amount. Subject to the representations, warranties, covenants and agreements set forth in this Agreement, including the representations, warranties covenants, and agreements made by Recipient in the Budget attached as Exhibit A, County agrees to distribute to Recipient the Funds the sum of \$_____ for the purposes set forth and described in Exhibit A, subject to approval and execution of this Agreement. Recipient understands and agrees that the Funds will not be disbursed under this Agreement until such time as all required documentation is provided by Recipient, including supporting documents, and all required documents are approved and signed by Recipient and County. Recipient understands and acknowledges that all awards are subject to the availability of funds and any modifications or additional requirements that may be imposed by law. In the event of a change in the CARES Act or guidance issued by the United States Department of Treasury that affect this Agreement, the obligations of the County under this Agreement may be terminated immediately.

5. Term. This Agreement shall commence on the last date set forth on the signature pages of this Agreement and shall remain in force and effect unless otherwise terminated as provided in this Agreement.

6. Use of Funds. Recipient shall only use the Funds for the purposes and intended use of funds description set forth in Exhibit A, and as awarded in this Agreement. Recipient may only use Funds for the purposes awarded in Exhibit A. Modification of Recipient’s purpose and intended use of funds shall require prior written approval of the County’s County Administrator.

7. Unused Funds. Funds awarded and paid from the County to Recipient pursuant to this Agreement that are not expended must be returned to the County on or before December 30, 2020, and may not be used for expenditures incurred after December 30, 2020.

8. Documentation and Reporting Use of Funds. Recipient agrees to maintain the records necessary in order to comply with the requirements of the CARES Act and to demonstrate that the Funds have been used in accordance with section 601(d) of the Social Security Act. Recipient agrees to utilize appropriate fund accounting, auditing, monitoring and such evaluation procedures as may be necessary to create, keep and maintain such records as the federal, state, and County may prescribe, and in order to assure fiscal control, proper management, and efficient disbursement of funds received under this Agreement.

Recipient shall maintain all books, records and other documents in compliance with state and federal reporting and audit-related requirements. Recipient shall make all books, records and other documents available at all reasonable times for inspection and copying by the County in order to ensure compliance with the CARES Act, U.S. Department of Treasury Guidance, the intended purposes of the Funds as set forth in Exhibit A, audit requirements, and this Agreement. Copies of all records (including electronic records) shall be furnished to the County at no cost.

Recipient agrees to timely complete and submit any and all financial reports, as requested by the County. Failure by Recipient to timely submit Supporting Documentation may result in an Event of Default. The County may require Supporting Documentation furnished by the Recipient from time to time regarding the use of Funds with respect to the approved and necessary expenditures listed in the Application and Notice of Decision.

Recipient shall maintain, retain and provide documentation to County relating to the use of Funds upon request, including, but not limited to (collectively referred to as “Supporting Documentation”):

- a. Procurement and conflict of interest policies;
- b. Documentation of compliance with applicable procurement laws and requirements for Recipient;
- c. Publication and/or posting documentation relating to procurement;
- d. Requests for bids/requests for proposals/requests for qualifications;
- e. Estimates, quotes, bid responses, proposals, or statements of qualifications;
- f. Sales receipts and invoices;
- g. Contracts for the purchase of goods or services;
- h. Proof of evaluation and award (e.g., minutes, approval by authorized representative, etc.);

- i. Purchase orders, payment requests, or applications for payment;
- j. Proof of payment (e.g., cancelled checks, direct payment information, bank statements, credit card statements);
- k. Proof of delivery on goods (e.g., copies of packing slips or bills of lading);
- l. Proof of services rendered (e.g., statements confirming services provided by a vendor or contractor);
- m. Time sheets and other personnel information (e.g., wage rates, job duties, etc., if applicable);
- n. Direct solicitation lists (if applicable);
- o. Documentation of sole source procurement (if applicable);
- p. Bonding and insurance documents (if applicable)
- q. E-Verify documentation;
- r. Financial reports regarding the use of the Funds;
- s. Any other documents reasonably required by the County, its auditors, the State of Missouri, or the United States with respect to compliance with the requirements of the CARES Act and guidance.

9. Compliance with Laws.

a. Recipient shall comply with all applicable federal, state and local laws, rules, regulations and ordinances, and all provisions required thereby to be included herein are incorporated by reference. Failure to comply with any applicable requirements by Recipient shall be deemed a material breach of this Agreement. The enactment or modification of any applicable state or federal statute or the promulgation of rules or regulations thereunder after execution of this Agreement shall be reviewed by the County and Recipient to determine whether the provisions of this Agreement require formal modification.

b. Recipient agrees that it has, or at the appropriate time, will comply with all applicable bidding and procurement requirements pursuant to policy, local, state, or federal law regarding the use of the Funds and that Recipient has, or will provide all necessary Supporting Documentation evidencing compliance with bidding and procurement laws.

c. The Recipient and its agents shall abide by all applicable conflict of interest laws and requirements that apply to persons who have a business relationship with the County. If Recipient has knowledge, or would have acquired knowledge with reasonable inquiry, that a County officer, employee, or special appointee, has a conflict of interest, Recipient shall ensure compliance with all applicable disclosure requirements prior to the

execution of this Agreement. If Recipient or its agents violate any applicable conflict of interest laws or requirements, the County may, in its sole discretion, terminate this Agreement immediately upon notice to Recipient.

d. Recipient certifies by entering into this Agreement that neither it nor its principal(s) is presently in arrears in payment of taxes, permit fees or other statutory, regulatory or judicially required payments and taxes to the County, State of Missouri, or federal government.

e. Recipient warrants that it has no current, pending or outstanding criminal, civil, or enforcement actions initiated by any federal, state, or local government, that would affect the proper and agreed upon use of the Funds.

f. Recipient agrees to obtain and maintain all required permits, licenses, registrations, and approvals, and shall comply with all health, safety, and environmental statutes, rules, or regulations with respect to uses of the Funds.

10. Debarment and Suspension. Recipient certifies by entering into this Agreement that it is not presently debarred, suspended, proposed for debarment, declared ineligible or voluntarily excluded from entering into this Agreement by any federal agency or by any department, agency or political subdivision of the State of Missouri. The term “principal” for purposes of this Agreement means an officer, director, owner, partner, key employee or other person with primary management or supervisory responsibilities, or a person who has a critical influence on or substantive control over the operations of Recipient.

11. Events of Default and Remedies. The occurrence of any one or more of the following events shall constitute an “Event of Default” under this Agreement, provided, that if any such Event of Default is capable of being cured, such Event of Default shall not be deemed to be an Event of Default unless Recipient fails to cure such Event of Default within the time period specified below following receipt of written notice from County notifying Recipient of such Event of Default (each, a “Cure Period”):

a. False Statement. Any statement, representation or warranty by Recipient contained in the Application or Supporting Documents, in any funding request, this Agreement, or any other document submitted to the County related to this Agreement which is determined to be false, contains a material misrepresentation, or is misleading, as determined by the County, its auditors, or the federal government.

b. Failure to Comply with Applicable Laws. Recipient fails to comply with or satisfy any of the requirements described in paragraph 26.

c. Failure to Perform; Breach. Recipient fails to perform or breaches any obligation or requirement of this Agreement, or makes an unauthorized use of the Funds, including, by way of example, but not limited to:

i. Use of Funds that is different than the Purpose and Intended Use of Funds as detailed in Exhibit A;

ii. Use of Funds for a purpose not described in Exhibit A, even for purposes that might otherwise be considered an eligible use of Funds had the use been approved by County;

iii. Use of Funds for purposes that are not necessary expenditures incurred due to the public health emergency with respect to the Coronavirus Disease 2019 (COVID-19);

iv. Use of Funds for expenditures incurred outside the time period of March 1, 2020, through December 30, 2020;

v. Failure to return unused or unspent funds on or before December 30, 2020;

d. Failure to Provide Supporting Documents and Information. Recipient fails to provide Supporting Documentation, including, but not limited to financial reports, books, records, and other documents reasonably required by the County relating to the subject matter of this Agreement, subject to a ten (10) day Cure Period.

e. Voluntary or Involuntary Insolvency. Recipient: (i) files or has filed against it a petition for relief, reorganization or any other petition in bankruptcy or for liquidation or to take advantage of any bankruptcy, insolvency or other debtors' relief law; (ii) makes an assignment for the benefit of its creditors; (iii) consents to the appointment of a custodian, receiver, trustee or other officer with similar powers, or a court or government authority enters an order appointing a custodian, receiver, trustee, or other officer with similar powers, and such order is not vacated within ten (10) days; (iv) has an order entered against it for relief or approving a petition for relief, reorganization or any other petition in bankruptcy or for liquidation or to take advance of any bankruptcy, insolvency or other debtor's relief law, and such order is not vacated within ten (10) days; or (v) has an order entered dissolving, winding-up or liquidating Recipient.

f. Determination regarding CARES Act. Use of the Funds for purposes that are determined not to be eligible, compliant with, or used in a manner consistent with the requirements of section 601(d) of the Social Security Act, as determined by an independent auditor, the United States Department of Treasury, or other agency charged with evaluating compliance with the requirements of the CARES Act, including internal controls, monitoring and management, and audit requirements.

g. Recoupment Request or Demand to County. A request or demand is made to the County or the United States to repay any of the Funds awarded to Recipient, subject to a determination by the County of the correctness and appropriateness of the request or demand. In such event, County shall provide written notice to the Recipient of the nature and extent of the request or demand, and, subject to the obligations of Recipient pursuant to paragraph 17, County and Recipient may mutually agree to the appropriate course of action under the circumstances.

h. Other Breach. The breach of any other material term or condition of this Agreement.

12. Remedies Upon Event of Default. Upon and during the continuance of an Event of Default, County may take any of the following actions, individually or in combination with any other remedy available hereunder or under applicable laws, rules and regulations. The remedies contained herein are in addition to all other remedies available to County at law or in equity by statute or otherwise and the exercise of any such remedy shall not preclude or in any way be deemed to waive any other remedy.

a. Termination. County may terminate this Agreement and the Notice of Decision by giving a written termination notice to Recipient (“Termination Notice”) and, on the date specified in such notice, all rights (but not the obligations) of Recipient under this Agreement shall terminate. Upon termination of this Agreement, County shall have no further obligation to disburse Funds to Recipient, whether or not the entire amount of Funds have been disbursed to Recipient.

b. Withholding of Funds. County may withhold all or any portion of Funds not yet disbursed pursuant to this Agreement or any other agreement with Recipient, regardless of whether Recipient has previously submitted an Application or whether County has approved a disbursement of Funds requested in any Application or funding request.

c. Repayment of Funds. County may demand the immediate return of any previously disbursed Funds that have been claimed, received, expended, or used by Recipient in breach of the terms of this Agreement or that are the subject of an Event of Default, together with interest thereon from the date of disbursement at the interest rate set forth in subparagraph f, or maximum rate permitted under applicable law (“Repayment Notice”). Recipient agrees to repay all Fund amounts which are the subject of a Repayment Notice within thirty (30) days.

d. Attorneys’ Fees. If any legal action or other proceeding is brought for the enforcement of this Agreement by County, or because of an Event of Default, if the County is the substantially prevailing party, the County shall be entitled to recover reasonable attorneys’ fees, litigation expenses, and other costs incurred in the action or proceeding, in addition to any other relief to which it may be entitled.

e. Interest. For any amount of Funds which are the subject of an Event of Default, Recipient shall be obligated to pay interest at the rate of 18% per annum, or the maximum rate permitted under applicable law, calculated from the date of disbursement to Recipient to the date the Funds are repaid to the County.

13. Funding Termination. If prior to the disbursement of Funds to Recipient, the Funds shall become unavailable for any or no reason, this Agreement shall terminate.

14. Governing Law. This Agreement shall be governed, construed, and enforced in accordance with the laws of the State of Missouri without regard to its conflict of laws rules. Suit, if any, must be brought in the Circuit Court of Jackson County, Missouri.

15. Nondiscrimination. Pursuant to the Missouri Human Rights Act, the federal Civil Rights Act of 1964, the Age Discrimination in Employment Act, and the Americans with Disabilities Act, Recipient covenants that it shall not discriminate against any employee or applicant for employment with respect to the hire, tenure, terms, conditions or privileges of employment or any matter directly or indirectly related to employment, because of a person's race, color, national origin, religion, sex, age, disability, ancestry, status as a veteran, or any other characteristic protected by federal, state, or local law and with respect to non-discrimination in public accommodations as it relates to accommodations, advantages, facilities, services, or privileges made available in places of public accommodation. Furthermore, Recipient agrees to comply with applicable federal laws, regulations, and executive orders prohibiting discrimination based on protected characteristics in the provision of services.

16. No Assignment. This Agreement and all rights, privileges, duties and obligations of Recipient hereto shall not be assigned or delegated by Recipient. Recipient is expressly prohibited from distributing the Funds to any other entity without the express written approval from County.

17. Indemnification. Recipient agrees, to the extent permitted by law, to defend, indemnify, and hold harmless County, its office holders, employees, and agents, from and against any and all claims, liabilities, losses and expenses (including reasonable attorney's fees) directly, indirectly, wholly or partially arising from or in connection with any act or omission of Recipient, its officers, directors, employees or agents, or any other person affiliated with Recipient in applying for or accepting the Funds, in the use or expenditure of the Funds, or any other matters arising out of or relating to the Application, the Notice of Decision, or this Agreement. This paragraph is not intended to constitute a waiver of sovereign immunity on the part of either party.

18. No Agency. Recipient is solely responsible for all uses, expenditures, and activities supported by the Funds. Nothing contained in this Agreement shall be construed so as to create a partnership, agency, joint venture, employment, or any other type of relationship. Recipient shall not represent itself as an agent of the County for any purpose and acknowledges that it does not have authority to bind the County in any manner whatsoever.

19. Notice to Parties. Whenever any notice, statement or other communication is required under this Agreement, it will be sent by first class U.S. mail service to the address listed for County or Recipient, respectively, set forth in the signature page to this Agreement.

20. Captions. The captions in this Agreement are inserted only for the purpose of convenient reference and shall not be construed to define, limit or prescribe the scope or intent of this Agreement or any part thereof.

21. Entire Agreement. Recipient acknowledges and agrees that this Agreement represents the entire agreement between Recipient and County with respect to the subject matter addressed herein. The terms of this Agreement may be modified only by a writing signed by duly authorized representatives of both parties.

22. Authority. The undersigned persons signing this Agreement on behalf of Recipient and County represent and warrant that the appropriate governing body, board, or person has authorized and approved this Agreement and the undersigned persons have the requisite legal authority and power to execute this Agreement, and to bind the respective party to the obligations contained herein. This Agreement constitutes a valid and binding obligation of Recipient, enforceable against Recipient in accordance with its terms. Further, to the undersigned's knowledge, neither the undersigned nor any other member, employee, representative, agent or officer of Recipient or County, directly or indirectly, has entered into or been offered any sum of money or other consideration for the execution of this Agreement other than that which appears upon the face hereof.

23. Employment of Unauthorized Persons. Pursuant to §285.530, RSMo, Recipient assures that it does not knowingly employ, hire for employment, or continue to employ an unauthorized person to perform work within the State of Missouri.

24. Other Financial Assistance. The Fund payments which are the subject of this Agreement shall be considered "other financial assistance" pursuant to 2 C.F.R. § 200.40.

25. Federal Financial Assistance. The Fund payments which are the subject of this Agreement are considered federal financial assistance subject to the Single Audit Act, 31 U.S.C. §§ 7501-7507, and the related provisions of the Uniform Guidance, 2 C.F.R. §203 regarding internal controls; §§200.330 through 200.332 regarding subrecipient monitoring and management, and subpart F regarding audit requirements, the requirements of which are incorporated herein by reference as though fully set forth herein.

26. Incorporation of Federal CARES Act Requirements. The following provisions and requirements are incorporated into this Agreement by reference, as though fully set forth herein:

- a. Section 601(a) of the Social Security Act, as added by section 5001 of the Coronavirus Aid, Relief, and Economic Security Act ("CARES Act");
- b. United States Department of Treasury, Coronavirus Relief Fund, Guidance for State, Territorial, Local, and Tribal Governments, April 22, 2020;
- c. United States Department of Treasury, Coronavirus Relief Fund, Frequently Asked Questions, updated as of May 28, 2020;
- d. Any and all subsequent guidance issued by the State of Missouri or United States, including the Department of Treasury or other federal agencies relating to the CARES Act.

IN WITNESS WHEREOF, the Parties hereto have caused this Agreement to be duly executed as of the undersigned date.

COUNTY

By: _____ Date: _____

Name: Frank White, Jr.
Title: County Executive

Approved as to Form:

Address: 415 E 12th Street, 2nd Floor
Kansas City, MO 64106

Bryan Covinsky, County Counselor

Attest:

Mary Jo Spino, Clerk of the County Legislature

RECIPIENT

I certify under the penalties of perjury set forth in Section 575.040, RSMo., that I have read the above Agreement and my statements contained herein are true and correct to the best of my knowledge.

By: _____ Date: _____

Name: _____

Title: _____

Address: _____

Subscribed and sworn to before me this ____ day of _____, 2020.

Notary Public

My Commission Expires:

REVENUE CERTIFICATE

I hereby certify that there is a balance otherwise unencumbered to the credit of the appropriation to which this contract is chargeable, and a cash balance otherwise unencumbered in the treasury from which payment is to be made, each sufficient to meet the obligation of \$ _____ which is hereby authorized.

Date

Director of Finance and Purchasing
Account No. ###-####-#####

Exhibit A
[Budget]

INTENTIONALLY LEFT BLANK

**City of Grain Valley, Missouri
2020 COVID Relief Fund Budget**

Administration	\$14,000.00
Citizen Relief	\$21,500.00
Facility Upgrades	\$5,112.42
Substantial Personnel Costs	\$690,014.00
Supplies (Protective Equipment/Cleaning)	\$3,431.64
Technology	\$126,345.94
Unanticipated COVID Expenses	\$4,596.00
Total	\$865,000.00

INTENTIONALLY LEFT BLANK

*Staff/
Committee
Reports*

INTENTIONALLY LEFT BLANK

MUNICIPAL DIVISION SUMMARY REPORTING FORM

Refer to instructions for directions and term definitions. Complete a report each month even if there has not been any court activity

I. COURT INFORMATION		Contact information same as last report <input type="checkbox"/>	
Municipality: GRAIN VALLEY		Reporting Period: June, 2020	
Mailing Address: 711 MAIN		Software Vendor: Tyler Technologies	
Physical Address: 711 MAIN		County JACKSON	Circuit: 16
Telephone Number: (816) 847-6240		Fax Number: (816) 847-6209	
Prepared By: Kari Boardman	E-mail Address: kboardman@cityofgrainvalley.org	iNotes <input type="checkbox"/>	
Municipal Judge(s): SUSAN WATKINS		Prosecuting Attorney: JEREMY COVER	

II. MONTHLY CASELOAD INFORMATION	Alcohol & Drug related Traffic	Other Traffic	Non-Traffic Ordinance
A. Cases (<i>citations / informations</i>) pending at start of month	145	1,696	331
B. Cases (<i>citations / informations</i>) filed	7	14	24
C. Cases (<i>citations / informations</i>) disposed			
1. jury trial (<i>Springfield, Jefferson County, and St. Louis County only</i>)	0	0	0
2. court / bench trial - GUILTY	0	0	0
3. court / bench trial - NOT GUILTY	0	0	0
4. plea of GUILTY in court	9	16	7
5. Violations Bureau Citations (<i>i.e., written plea of guilty</i>) and bond forfeitures by court order (<i>as payment of fines / costs</i>)	0	1	0
6. dismissed by court	5	2	8
7. <i>nolle prosequi</i>	0	0	0
8. certified for jury trial (<i>not heard in the Municipal Division</i>)	0	0	0
9. TOTAL CASE DISPOSITIONS	14	19	15
D. Cases (<i>citations / informations</i>) pending at end of month [pending caseload = (A + B) - C9]	138	1,691	340
E. Trial de Novo and / or appeal applications filed	0	0	0

III. WARRANT INFORMATION (pre- & post-disposition)		IV. PARKING TICKETS	
1. # Issued during reporting period	54	# Issued during period	0
2. # Served/withdrawn during reporting period	18	<input type="checkbox"/> Court staff does not process parking tickets	
3. # Outstanding at end of reporting period	418		

MUNICIPAL DIVISION SUMMARY REPORTING FORM

I. COURT INFORMATION	Municipality: GRAIN VALLEY	Reporting Period: June, 2020
-----------------------------	----------------------------	------------------------------

V. DISBURSEMENTS			
Excess Revenue (minor traffic and municipal ordinance violations, subject to the excess revenue percentage limitation)		Other Disbursements cont.	
Fines - Excess Revenue	\$ 2,514.37		\$
Clerk Fee - Excess Revenue	\$ 180.00		\$
Crime Victims Compensation (CVC) Fund surcharge - Paid to City/Excess Revenue	\$ 5.55		\$
Bond forfeitures (paid to city) - Excess Revenue	\$ 0.00		\$
Total Excess Revenue	\$ 2,699.92		\$
Other Revenue (non-minor traffic and ordinance violations not subject to the excess revenue percentage limitation)			\$
Fines - Other	\$ 4,953.66		\$
Clerk Fee - Other	\$ 372.00		\$
Judicial Education Fund (JEF) <input checked="" type="checkbox"/> Court does not retain funds for JEF	\$ 0.00		\$
Peace Officer Standard and Training (POST) Commission surcharge	\$ 47.00		\$
Crime Victims Compensation (CVC) Fund surcharge - Paid to State	\$ 335.11		\$
Crime Victims Compensation (CVC) Fund surcharge - Paid to City/Other	\$ 11.47		\$
Law Enforcement Training (LET) Fund surcharge	\$ 92.00		\$
Domestic Violence Shelter surcharge	\$ 184.00		\$
Inmate Prisoner Detainee Security Fund surcharge	\$ 0.00		\$
Sheriff's Retirement Fund (SRF) surcharge	\$ 139.34		\$
Restitution	\$ 150.00		\$
Parking ticket revenue (including penalties)	\$ 0.00		\$
Bond forfeitures (paid to city) - Other	\$ 0.00		\$
Total Other Revenue	\$ 6,284.58	Total Other Disbursements	\$ 0.00
Other Disbursements: Enter below additional surcharges and/or fees not listed above. Designate if subject to the excess revenue percentage limitation. Examples include, but are not limited to, arrest costs, witness fees, and board bill/jail costs.		Total Disbursements of Costs, Fees, Surcharges and Bonds Forfeited	\$ 8,984.50
	\$	Bond Refunds	\$ 0.00
	\$	Total Disbursements	\$ 8,984.50