



**City of Grain Valley Board of Aldermen
Regular Meeting Agenda**

AMENDED

July 11, 2022

7:00 P.M.

Open to the Public

Located in the Council Chambers of City Hall
711 Main Street | Grain Valley, Missouri

ITEM I: Call to Order

- Mayor Mike Todd

ITEM II: Roll Call

- City Clerk Jamie Logan

ITEM III: Invocation

- Pastor Wayne Geiger of First Baptist Church

ITEM IV: Pledge of Allegiance

- Alderman Dale Arnold

ITEM V: Approval of Agenda

- City Administrator Ken Murphy

ITEM VI: Proclamations

- None

ITEM VII: Citizen Participation

- Citizens are asked to please limit their comments to two (2) minutes

ITEM VIII: Consent Agenda

- June 27, 2022 – Board of Aldermen Regular Meeting Minutes
- July 11, 2022 – Accounts Payable

ITEM IX: Previous Business

- None

ITEM X: New Business

- None

ITEM XI: Presentations

- None

ITEM XII: Public Hearing

- The Lofts at Creekside Landing Zoning Change
- Chapter 400 Zoning Regulations Amendment

ITEM XIII: Resolutions

ITEM XIII (A) **A Resolution by the Board of Aldermen of the City of Grain Valley, Missouri Authorizing the Offering for Sale of General Obligation Bonds for the Benefit of the City of Grain Valley, Missouri**
R22-55
Introduced by Alderman Rick Knox

To approve a resolution authorizing the sale of approximately \$14,000,000 of General Obligation Bonds for a new Police Department facility

ITEM XIV: Ordinances

ITEM XIV (A) **An Ordinance Amending Traffic Code Schedule II Stop Intersections of the City of Grain Valley Municipal Code**
B22-20

1ST READ

Introduced by Alderman Dale Arnold

To add existing stop sign locations to the Code of Ordinances

ITEM XIV (B)

B22-21

1ST READ

Introduced by Alderman Tom Cleaver

An Ordinance Changing the Zoning on Approximately 7.53 Acres From District R-3 PUD (Multi-Family Residential District -Planned Unit Development) to District R03P (Multi-Family Residential District - Planned Overlay District) and Approval of the Preliminary Development Plan/Plat for the Lofts at Creekside Landing

To change the zoning for a proposed development

ITEM XV: City Attorney Report

- City Attorney

ITEM XVI: City Administrator & Staff Reports

- City Administrator Ken Murphy
- Deputy City Administrator Theresa Osenbaugh
- Captain Palecek Police Department
- Finance Director Steven Craig
- Community Development Director Mark Trosen
- Parks & Recreation Director Shannon Davies
- City Clerk Jamie Logan

ITEM XVII: Board of Aldermen Reports & Comments

- Alderman Dale Arnold
- Alderman Shea Bass
- Alderman Tom Cleaver
- Alderman Rick Knox
- Alderman Darren Mills
- Alderman Ryan Skinner

ITEM XVIII: Mayor Report

- Mayor Mike Todd

ITEM XIX: Executive Session

- Legal Actions, Causes of Action of Litigation Pursuant to Section 610.021(1), RSMo. 1998, as Amended
- Leasing, Purchase or Sale of Real Estate Pursuant to Section 610.021(2), RSMo. 1998, as Amended
- Hiring, Firing, Disciplining or Promoting of Employees (personnel issues), Pursuant to Section 610.021(3), RSMo. 1998, as Amended
- Sealed bids and related documents, until the bids are opened; and sealed proposals and related documents to a negotiated contract until a contract is executed, or all proposals are rejected, Pursuant to Section 610.021(12), RSMo. 1998, as Amended
- Individually Identifiable Personnel Records, Personnel Records, Performance Ratings or Records Pertaining to Employees or Applicants for Employment, Pursuant to Section 610.021(13), RSMo 1998, as Amended.

ITEM XX: Adjournment

Please Note

The next scheduled meeting of the Board of Aldermen is a Regular Meeting on July 25, 2022 at 7:00 P.M. The meeting will be in the Council Chambers of the Grain Valley City Hall.

Persons requiring an accommodation to participate in the meeting should contact the City Clerk at 816.847.6211 at least 48 hours before the meeting.

The City of Grain Valley is interested in effective communication for all persons.

Upon request, the minutes from this meeting can be made available by calling 816.847.6211.

INTENTIONALLY LEFT BLANK

Consent

Agenda

INTENTIONALLY LEFT BLANK

ITEM I: Call to Order

- The Board of Aldermen of the City of Grain Valley, Missouri, met in Regular Session on June 27, 2022, at 7:00 p.m. in the Board Chambers located at Grain Valley City Hall
- The meeting was called to order by Mayor Mike Todd

ITEM II: Roll Call

- City Clerk Jamie Logan called roll
- *Present: Arnold, Bass, Cleaver, Knox, Mills, Skinner*
- *Absent:*

-QUORUM PRESENT-

ITEM III: Invocation

- Invocation was given by Pastor Mike Cassidy of Faith United Methodist Church

ITEM IV: Pledge of Allegiance

- The Pledge of Allegiance was led by Alderman Darren Mills

ITEM V: Approval of Agenda

- No Changes

ITEM VI: Proclamations

- None

ITEM VII: Citizen Participation

- None

ITEM VIII: Consent Agenda

- June 7, 2022 – Board of Aldermen Special Meeting Minutes
- June 27, 2022 – Accounts Payable
- *Alderman Skinner made a Motion to Accept the Consent Agenda*
- *The Motion was Seconded by Alderman Knox*
 - *No discussion*
- *Motion to Approve the Consent Agenda was voted on with the following voice vote:*
 - *Aye: Arnold, Bass, Cleaver, Knox, Mills, Skinner*
 - *Nay:*
 - *Abstain:*

-Motion Approved: 6-0-

ITEM IX: Previous Business

- None

ELECTED OFFICIALS PRESENT

Mayor Mike Todd
Alderman Dale Arnold
Alderman Shea Bass
Alderman Tom Cleaver
Alderman Rick Knox
Alderman Darren Mills
Alderman Ryan Skinner

ELECTED OFFICIALS ABSENT

STAFF OFFICIALS PRESENT
City Administrator Ken Murphy
Deputy City Administrator Theresa Osenbaugh
Captain Jeff Palecek
Community Development Director Mark Trosen
Finance Director Steven Craig
City Clerk Jamie Logan
City Attorney Rich Wood

ITEM X: New Business

- Request to approve 2022-2023 liquor license renewals for the following businesses in the City of Grain Valley:
 - B & B Theatres Operating Co Inc. dba B&B Theatres Grain Valley Marketplace 8
 - Captain's Pub LLC
 - Casey's General Store #2209
 - Casey's General Store #2808
 - Casey's General Store #3325
 - Cosentino's Price Chopper #325
 - Discount Liquor & Smokes
 - Dollar General Store #9597
 - El Tequilazo Cocina Y Cantina
 - Impact Motor Sports, LLC dba Valley Speedway
 - Iron Kettle Brewing LLC
 - JY Amigo's Inc. dba El Maguey
 - Outerbelt Entertainment dba MO Country
 - QuikTrip Corporation
 - Temp-Stop, LLC
 - The Pub and Patio, LLC
- *Alderman Arnold made a Motion to Approve Liquor License Renewals*
- *The Motion was seconded by Alderman Skinner*
- *Motion to Approve Liquor License Renewals was voted on with the following voice vote:*
 - *Aye: Arnold, Bass, Cleaver, Knox, Mills, Skinner*
 - *Nay: None*
 - *Abstain: None*
- Motion Approved: 6-0-**
- Catering Liquor License - Authorization to sell on City property for the Grain Valley Fair Beer Garden September 9-10, 2022
 - Outerbelt Entertainment dba MO Country
 - Grain Valley Partnership Fair board met and no longer wants to run the beer garden; MO Country volunteered to run the beer garden for the fair; fencing and signage will be up as it has been in the past
 - Alderman Arnold asked if they will have liability insurance with the City of Grain Valley listed; the Fair has insurance and MO Country did not see it as an issue and they will add it
- *Alderman Arnold made a Motion to Approve the sale of liquor on City Property at the Pavilion for the Grain Valley Beer Garden September 9-10, 2022, the temporary/catering license for the Grain Valley Fair*
- *The Motion was seconded by Alderman Skinner*
- *Motion to Approve Liquor License Renewals was voted on with the following voice vote:*

ELECTED OFFICIALS PRESENT

Mayor Mike Todd
Alderman Dale Arnold
Alderman Shea Bass
Alderman Tom Cleaver
Alderman Rick Knox
Alderman Darren Mills
Alderman Ryan Skinner

ELECTED OFFICIALS ABSENT

STAFF OFFICIALS PRESENT
City Administrator Ken Murphy
Deputy City Administrator Theresa Osenbaugh
Captain Jeff Palecek
Community Development Director Mark Trosen
Finance Director Steven Craig
City Clerk Jamie Logan
City Attorney Rich Wood

- *Aye: Arnold, Bass, Cleaver, Knox, Mills, Skinner*
- *Nay: None*
- *Abstain: None*

-Motion Approved: 6-0-

ITEM XI: Presentations

- Auditor Presentation by Troutt, Beeman & Co., P.C.
- Mr. Butch Beeman presented the highlights of the audit to the board related to the independent audit of the City's financials for the year ending 12/31/21; They rendered the clean opinion and the highest opinion that could be given; they review many items during an audit including compliance, verification, etc.; Items are fairly presented in this audit
- Statement of activities (all except utilities included) and all increased; general expenditures were down and interest on long term debt and this saved the City significant amounts of interest; Utility Funds revenue increased (water and sewer similar to last year); All deposits were held by qualified depository institutions.
- Trout, Beeman is required to share if any disagreements with staff or any difficulties working with staff and there were no issues working with City staff; they are also required to tell the auditor if the city staff did any opinion checking from one CPA firm to another; this was a very clean audit and it went very well
- Alderman Cleaver clarified that city staff is doing a good job

ITEM XII: Public Hearing

- None

ITEM XIII: Resolutions

Resolution No. R22-50 A Resolution by the Board of Aldermen of the City of Grain Valley Authorizing the Filing of an Application With the Missouri Department of Natural Resources, Financial Assistance Center's State ARPA Grant Programs for Subaward of Federal Assistance Provided to the State of Missouri by the US Department of the Treasury ("Treasury") Pursuant to Section 602(B) of the Social Security Act, as Added by Section 9901 of the American Rescue Act, (Pub. L. No. 117-2 (March 11, 2021), 135 Stat. 4, 223-26)

- *Alderman Skinner moved to approve Resolution No. R22-50*
- *The Motion was Seconded by Alderman Bass*
 - Mr. Tuttle stated DNR have funds available for certain projects and he felt this would be the one that we might have the best chance for the city to compete for; the applications are due in July and he will work on that
- *Resolution No. R22-50 was voted upon with the following voice vote:*
 - *Aye: Arnold, Bass, Cleaver, Knox, Mills, Skinner*
 - *Nay:*

ELECTED OFFICIALS PRESENT

Mayor Mike Todd
Alderman Dale Arnold
Alderman Shea Bass
Alderman Tom Cleaver
Alderman Rick Knox
Alderman Darren Mills
Alderman Ryan Skinner

ELECTED OFFICIALS ABSENT

STAFF OFFICIALS PRESENT
City Administrator Ken Murphy
Deputy City Administrator Theresa Osenbaugh
Captain Jeff Palecek
Community Development Director Mark Trosen
Finance Director Steven Craig
City Clerk Jamie Logan
City Attorney Rich Wood

- *Abstain:*

-Resolution No. R22-50 Approved: 6-0-

Resolution No. R22-51 A Resolution by the Board of Aldermen of the City of Grain Valley, Missouri Adopting the 2023-2027 Grain Valley Capital Improvements Plan

- *Alderman Arnold moved to approve Resolution No. R22-51*
- *The Motion was Seconded by Alderman Skinner*
 - Mr. Tuttle presented projects that are funded or are in the funding cycle; this is a flexible planning tool to identify needed projects, funding and timing for Parks and Recreation, Public Works, Major Purchase (police) and the Vehicle and Equipment Replacement
 - Trails/Streets projects, water and sewer mains, stormwater improvements and Park upgrades
 - Ryan Meadows Sidewalk Connection of Cross Creek
 - South Buckner Tarsney Trail
 - Eagles Parkway Trail from main Street to Blue Branch trail
 - Downtown Phase II B Street Improvements
 - New Water Tank
 - 2023-2027 Pavement Maintenance Programs
 - Eagles Parkway Phase A
 - Widen and Improve Buckner Tarsney Road from Woodbury Drive to Duncan Road
 - Roadway Scanning and Condition Report Update to update the 5-year plan
 - NE Sewer Interceptor Phase I
 - Duncan Road Box Culvert Replacement
 - Vehicle and equipment replacements for each department per the replacement plan2
 - Firearm replacements for the police department
- *Resolution No. R22-51 was voted upon with the following voice vote:*
 - *Aye: Arnold, Bass, Cleaver, Knox, Mills, Skinner*
 - *Nay:*
 - *Abstain:*

-Resolution No. R22-51 Approved: -6-0-

Resolution No. R22-52 A Resolution by the Board of Aldermen of the City of Grain Valley, Missouri, Authorizing the City Administrator to Enter Into a Forty-Eight (48) Month Lease

ELECTED OFFICIALS PRESENT

Mayor Mike Todd
Alderman Dale Arnold
Alderman Shea Bass
Alderman Tom Cleaver
Alderman Rick Knox
Alderman Darren Mills
Alderman Ryan Skinner

ELECTED OFFICIALS ABSENT

STAFF OFFICIALS PRESENT

City Administrator Ken Murphy
Deputy City Administrator Theresa Osenbaugh
Captain Jeff Palecek
Community Development Director Mark Trosen
Finance Director Steven Craig
City Clerk Jamie Logan
City Attorney Rich Wood

Agreement With GFI Digital for Sharp Copier and Printer Equipment

- *Alderman Bass moved to approve Resolution No. R22-52*
- *The Motion was Seconded by Alderman Arnold*
 - In a 5-year lease with RICOH expiring in September 2022; other options were reviewed and we would save \$18,000 over the next 5 years with GFI; we've been testing this equipment over this past month
- *Resolution No. R22-52 was voted upon with the following voice vote:*
 - *Aye: Arnold, Bass, Cleaver, Knox, Mills, Skinner*
 - *Nay:*
 - *Abstain:*

-Resolution No. R22-52 Approved: -6-0-

Resolution No. R22-53 A Resolution by the Board of Aldermen of the City of Grain Valley, Missouri, Authorizing the City Administrator to Approve a Purchase for Fence Replacement at Three Water Stations

- *Alderman Cleaver moved to approve Resolution No. R22-53*
- *The Motion was Seconded by Alderman Mills*
 - Three areas in town with white vinyl fencing and they are not holding up or letting air flow through; the proposal is to replace with black chain link with screening over them (Sni a bar, Royer Lane and Cross Creek Drive)
- *Resolution No. R22-53 was voted upon with the following voice vote:*
 - *Aye: Arnold, Bass, Cleaver, Knox, Mills, Skinner*
 - *Nay:*
 - *Abstain:*

-Resolution No. R22-53 Approved: -6-0-

Resolution No. R22-54 A Resolution by the Board of Aldermen of the City of Grain Valley, Missouri, Authorizing the City Administrator to Enter Into an Agreement With McCown Gordon Construction, LLC for Construction Management Services

- *Alderman Knox moved to approve Resolution No. R22-54*
- *The Motion was Seconded by Alderman Skinner*
 - RFQ went out for construction manager for the new police station; this is after the submittals, costs and interviews; this would finalize the design team for the police station
- *Resolution No. R22-54 was voted upon with the following voice vote:*
 - *Aye: Arnold, Bass, Cleaver, Knox, Mills, Skinner*
 - *Nay:*

ELECTED OFFICIALS PRESENT

Mayor Mike Todd
Alderman Dale Arnold
Alderman Shea Bass
Alderman Tom Cleaver
Alderman Rick Knox
Alderman Darren Mills
Alderman Ryan Skinner

ELECTED OFFICIALS ABSENT

STAFF OFFICIALS PRESENT
City Administrator Ken Murphy
Deputy City Administrator Theresa Osenbaugh
Captain Jeff Palecek
Community Development Director Mark Trosen
Finance Director Steven Craig
City Clerk Jamie Logan
City Attorney Rich Wood

- *Abstain:*

-Resolution No. R22-54 Approved: -6-0-

ITEM XV: Ordinances

- None

ITEM XV: City Attorney Report

- None

ITEM XVI: City Administrator & Staff Reports

- City Administrator Ken Murphy
 - 4th of July is this weekend and there is an ordinance in place July 2-4 9am to 11pm; there has been communication on social media; this Friday is a staff appreciation lunch 7/1 12-2 at the pavilion and city hall will be closed; there will be a notice to the public of this
- Deputy City Administrator Theresa Osenbaugh
 - Absent
- Captain Palecek Police Department
 - None
- Finance Director Steven Craig
 - Thanked staff during audit process; good 2021 and continuing this trend in 2022
- Parks & Recreation Director Shannon Davies
 - Absent
- City Engineer Dick Tuttle
 - Public Works event was last Thursday; approximately 160 people to include 56 pizzas by Papa Murphy's
- City Clerk Jamie Logan
 - None

ITEM XVIII: Board of Aldermen Reports & Comments

- Alderman Dale Arnold
 - Asked for the city to communicate with CJC on the fireworks rules
- Alderman Shea Bass
 - None
- Alderman Tom Cleaver
 - None
- Alderman Rick Knox
 - None
- Alderman Darren Mills
 - None

ELECTED OFFICIALS PRESENT

Mayor Mike Todd
Alderman Dale Arnold
Alderman Shea Bass
Alderman Tom Cleaver
Alderman Rick Knox
Alderman Darren Mills
Alderman Ryan Skinner

ELECTED OFFICIALS ABSENT

STAFF OFFICIALS PRESENT
City Administrator Ken Murphy
Deputy City Administrator Theresa Osenbaugh
Captain Jeff Palecek
Community Development Director Mark Trosen
Finance Director Steven Craig
City Clerk Jamie Logan
City Attorney Rich Wood

- Alderman Ryan Skinner
 - None

ITEM XVIII: Mayor Report

- Thanked all for their work at the Public Works event as there was a nice turnout
- City Staff has been sitting down with developers to discuss what we can do better to work with them; the first meeting was last week and the community development staff was very good and the city is easy to work with
- There are tattered flags at Legacy Park and looking to source those and replace before every Memorial and Veteran's day; there have been concerns around the area; some think this is weeds; it is a conservation area and conservationists have come out and they think it looks great; would like to put signage there potentially to share with the public that it is a conservation area

ITEM XIX: Executive Session

- *Mr. Murphy stated an executive session was needed for Legal Actions, Causes of Action of Litigation Pursuant to Section 610.021(1), RSMo. 1998, as Amended, Leasing, Purchase or Sale of Real Estate Pursuant to Section 610.021(2), RSMo. 1998, as Amended, Hiring, Firing, Disciplining or Promoting of Employees (personnel issues), Pursuant to Section 610.021(3), RSMo. 1998, as Amended, and Individually Identifiable Personnel Records, Personnel Records, Performance Ratings or Records Pertaining to Employees or Applicants for Employment, Pursuant to Section 610.021(13), RSMo 1998, as Amended.*
- *Alderman Arnold moved to close the Regular Meeting for items related to Legal Actions, Causes of Action of Litigation Pursuant to Section 610.021(1), RSMo. 1998, as Amended, Leasing, Purchase or Sale of Real Estate Pursuant to Section 610.021(2), RSMo. 1998, as Amended, Hiring, Firing, Disciplining or Promoting of Employees (personnel issues), Pursuant to Section 610.021(3), RSMo. 1998, as Amended, and Individually Identifiable Personnel Records, Personnel Records, Performance Ratings or Records Pertaining to Employees or Applicants for Employment, Pursuant to Section 610.021(13), RSMo 1998, as Amended.*
- *The motion was seconded by Alderman Knox*
 - No Discussion
- *The motion was voted on with the following roll call vote:*
 - *Aye: Arnold, Bass, Cleaver, Knox, Mills, Skinner*
 - *Nay: None*
 - *Abstain: None*

-Motion Carried:6-0-

- The regular meeting closed at 7:54 PM-

- *Alderman Knox moved to open the Regular Meeting*

ELECTED OFFICIALS PRESENT

Mayor Mike Todd
Alderman Dale Arnold
Alderman Shea Bass
Alderman Tom Cleaver
Alderman Rick Knox
Alderman Darren Mills
Alderman Ryan Skinner

ELECTED OFFICIALS ABSENT

STAFF OFFICIALS PRESENT

City Administrator Ken Murphy
Deputy City Administrator Theresa Osenbaugh
Captain Jeff Palecek
Community Development Director Mark Trosen
Finance Director Steven Craig
City Clerk Jamie Logan
City Attorney Rich Wood

CITY OF GRAIN VALLEY
Board of Aldermen Meeting Minutes
Regular Session

- *The motion was seconded by Alderman Arnold*
 - No Discussion
- *The motion was voted on with the following roll call vote:*
 - *Aye: Arnold, Bass, Cleaver, Knox, Mills, Skinner*
 - *Nay: None*
 - *Abstain: None*

- Motion Carried: 6-0-

- The regular meeting opened at 8:32 PM-

ITEM XX: Adjournment

- The meeting adjourned at 8:32 P.M.

Minutes submitted by:

Jamie Logan
City Clerk

Date

Minutes approved by:

Mike Todd
Mayor

Date

ELECTED OFFICIALS PRESENT

Mayor Mike Todd
Alderman Dale Arnold
Alderman Shea Bass
Alderman Tom Cleaver
Alderman Rick Knox
Alderman Darren Mills
Alderman Ryan Skinner

ELECTED OFFICIALS ABSENT

STAFF OFFICIALS PRESENT

City Administrator Ken Murphy
Deputy City Administrator Theresa Osenbaugh
Captain Jeff Palecek
Community Development Director Mark Trosen
Finance Director Steven Craig
City Clerk Jamie Logan
City Attorney Rich Wood

DEPARTMENT	FUND	VENDOR NAME	DESCRIPTION	AMOUNT
NON-DEPARTMENTAL	GENERAL FUND	KCMO CITY TREASURER	KC EARNINGS TAX WH	20.38
		MO DEPT OF REVENUE	MISSOURI WITHHOLDING	9,958.00
			MISSOURI WITHHOLDING	100.00
			MISSOURI WITHHOLDING	2,718.28
			MISSOURI WITHHOLDING	5.00
		FRATERNAL ORDER OF POLICE	EMPLOYEE DEDUCTIONS	357.00
		HAMPEL OIL INC	CJC FUEL	51.47
			CJC FUEL	880.34
			HAMPEL OIL INC	0.31-
			CJC FUEL	1,645.49
		AFLAC	AFLAC AFTER TAX	73.73
			AFLAC CRITICAL CARE	23.28
			AFLAC PRETAX	268.75
			AFLAC PRETAX	22.14-
			AFLAC-W2 DD PRETAX	249.74
			AFLAC-W2 DD PRETAX	14.64-
		MIDWEST PUBLIC RISK	DENTAL	144.10
			DENTAL	9.10-
			OPEN ACCESS	276.50
			OPEN ACCESS	249.55
			OPEN ACCESS	222.98
			HSA	322.56
			HSA	1,624.17
			HSA	22.55
			VISION	24.00
			VISION	8.00-
			VISION	56.20
			VISION	110.16
			VISION	14.47
		HSA BANK	HSA - GRAIN VALLEY, MO	407.04
			HSA - GRAIN VALLEY, MO	518.36
			LOR	100.00
		CITY OF GRAIN VALLEY -FLEX	FLEX - DEPENDENT CARE	294.60
			FLEX PLAN	15.00
		MISSIONSQUARE RETIREMENT	MISSIONSQUARE 457 %	827.45
			MISSIONSQUARE 457	399.99
			MISSIONSQUARE ROTH IRA	39.17
		INTERNAL REVENUE SERVICE	FEDERAL WH	64,579.65
			FEDERAL WH	250.00
			FEDERAL WH	7,558.55
			SOCIAL SECURITY	6,665.13
			SOCIAL SECURITY	490.42
			SOCIAL SECURITY	5,009.47
			SOCIAL SECURITY	3.34
			MEDICARE	2,742.63
			MEDICARE	114.72
			MEDICARE	1,171.59
			MEDICARE	0.78
		RALPH HENDREN	HENDREN RESTITUTION	<u>1,214.00</u>
			TOTAL:	111,766.40
HR/CITY CLERK	GENERAL FUND	MISSOURI LAGERS	MONTHLY CONTRIBUTIONS	277.23
		STANDARD INSURANCE CO	JULY 22 STANDARD LIFE INSU	13.00
		MIDWEST PUBLIC RISK	DENTAL	35.00
			HOLLAND	62.00
			LOGAN	86.00

DEPARTMENT	FUND	VENDOR NAME	DESCRIPTION	AMOUNT
			HSA	258.90
			HSA	358.91
		HSA BANK	HSA - GRAIN VALLEY, MO	100.28
		CONCENTRA MEDICAL CENTERS	SEASONAL SCREENINGS	41.00
		INTERNAL REVENUE SERVICE	SOCIAL SECURITY	123.70
			MEDICARE	<u>28.93</u>
			TOTAL:	1,384.95
INFORMATION TECH	GENERAL FUND	NETSTANDARD INC	Server Back-up Services	980.00
			Clarity Services	3,698.64
			OFFICE 365	<u>984.50</u>
			TOTAL:	5,663.14
BLDG & GRDS	GENERAL FUND	STANDARD INSURANCE CO	JULY 22 STANDARD LIFE INSU	<u>0.00</u>
			TOTAL:	0.00
ADMINISTRATION	GENERAL FUND	MISSOURI LAGERS	MONTHLY CONTRIBUTIONS	438.00
		STANDARD INSURANCE CO	JULY 22 STANDARD LIFE INSU	22.25
		RICOH USA INC	50% ADMIN C85162117	239.62
			50% MAILRM C85162118	239.62
		PURCHASE POWER	POSTAGE	2,000.00
		HD GRAPHICS & APPAREL	BRAND APPAREAL	1,360.00
		MIDWEST PUBLIC RISK	DENTAL	24.13
			DENTAL	0.82
			LOR	36.00
			LOR	642.00
			MURPHY	30.00
			OSENBAUGH	30.00
			LOR	8.00
			MURPHY	8.00
			OSENBAUGH	8.00
			HSA	12.49
			HSA	430.32
		HSA BANK	HSA - GRAIN VALLEY, MO	100.54
			HSA - GRAIN VALLEY, MO	2.36
			LOR	75.00
		INTERNAL REVENUE SERVICE	SOCIAL SECURITY	367.27
			MEDICARE	85.88
		BAKING WITH A BASS LLC	FIRST FRI BRAND LAUNCH COO	<u>200.00</u>
			TOTAL:	6,360.30
ELECTED	GENERAL FUND	HD GRAPHICS & APPAREL	BRAND APPAREAL	674.50
		INTERNAL REVENUE SERVICE	SOCIAL SECURITY	490.42
			MEDICARE	<u>114.72</u>
			TOTAL:	1,279.64
FINANCE	GENERAL FUND	MO DEPT OF REVENUE	MISSOURI WITHHOLDING	0.50
			MISSOURI WITHHOLDING	0.50
			MISSOURI WITHHOLDING	0.50
			MISSOURI WITHHOLDING	0.50
		MISSOURI LAGERS	MONTHLY CONTRIBUTIONS	360.71
		STANDARD INSURANCE CO	JULY 22 STANDARD LIFE INSU	13.00
		MIDWEST PUBLIC RISK	DENTAL	34.89
			CRAIG	86.00
			MALLETT	30.00
			STRADER	62.00

DEPARTMENT	FUND	VENDOR NAME	DESCRIPTION	AMOUNT
			WEEMS	62.00
			HSA	265.14
			HSA	348.67
		HSA BANK	HSA - GRAIN VALLEY, MO	100.00
		INTERNAL REVENUE SERVICE	SOCIAL SECURITY	161.08
			MEDICARE	<u>37.66</u>
			TOTAL:	1,563.15
COURT	GENERAL FUND	MISSOURI LAGERS	MONTHLY CONTRIBUTIONS	242.59
		STANDARD INSURANCE CO	JULY 22 STANDARD LIFE INSU	13.00
		MIDWEST PUBLIC RISK	DENTAL	18.00
			BOARDMAN	30.00
			HSA	321.00
		HSA BANK	HSA - GRAIN VALLEY, MO	75.00
		INTERNAL REVENUE SERVICE	SOCIAL SECURITY	178.28
			MEDICARE	<u>41.69</u>
			TOTAL:	919.56
VICTIM SERVICES	GENERAL FUND	MISSOURI LAGERS	MONTHLY CONTRIBUTIONS	210.97
		STANDARD INSURANCE CO	JULY 22 STANDARD LIFE INSU	13.00
		MIDWEST PUBLIC RISK	DENTAL	34.90
			REYNOLDS	86.00
			HSA	697.35
		HSA BANK	HSA - GRAIN VALLEY, MO	100.00
		INTERNAL REVENUE SERVICE	SOCIAL SECURITY	142.01
			MEDICARE	<u>33.21</u>
			TOTAL:	1,317.44
FLEET	GENERAL FUND	AIRGAS USA LLC	ARGON INDUSTRIAL 20	36.94
		MISSOURI LAGERS	MONTHLY CONTRIBUTIONS	123.00
		ADVANCE AUTO PARTS	OIL FILTERS	27.38
		STANDARD INSURANCE CO	JULY 22 STANDARD LIFE INSU	6.50
		OREILLY AUTOMOTIVE INC	LEAD WIRE AND TPMS SRVC KI	51.89
			TPMS SRVC KIT	1.99
			WIRE LOOM	21.00
			NITRILE GLOVES	49.98
			TOOL KIT	63.99
			VAC PUMP OIL	10.71
		FASTENAL COMPANY	14.5" UV BLACK CBL TIE	64.10
			BATTERY	255.00
			1-3/4" CLAMPS	20.32
			5/8-11 TOP LK GR	40.07
			14.5" UV BLACK CBL TIE	91.32
		MIDWEST PUBLIC RISK	DENTAL	17.97
			WOLTZ	30.00
			HSA	165.35
		HSA BANK	HSA - GRAIN VALLEY, MO	38.64
		CINTAS CORPORATION # 430	FLEET UNIFORMS	4.70
		INTERNAL REVENUE SERVICE	SOCIAL SECURITY	60.96
			MEDICARE	<u>14.26</u>
			TOTAL:	1,192.09
POLICE	GENERAL FUND	MISSOURI LAGERS	EMPLOYER CONTRIBUTIONS	7,893.96
			MONTHLY CONTRIBUTIONS	421.91
		PETTY CASH	PHONE FOR VICTIM	46.17
			GROOMING SUPPLIES FOR PD K	38.29

DEPARTMENT	FUND	VENDOR NAME	DESCRIPTION	AMOUNT
			FUEL FOR TRANSPORT	15.00
			FOOD FOR PD K9	87.67
		STATE BANK OF MISSOURI	PD LEASE VEHICLES/EQUIPME	58.45
			PD LEASE VEHICLES/EQUIPME	3,680.86
		STANDARD INSURANCE CO	JULY 22 STANDARD LIFE INSU	313.00
		RICOH USA INC	PD C85162116	479.26
			PD C85162119	479.26
			PD C85162124	68.70
		HAMPEL OIL INC	BULK GASOHOL/DIESEL	2,253.80
			BULK GASOHOL/DIESEL	314.29
			BULK GASOHOL/DIESEL	2,040.64
			BULK GASOHOL/DIESEL	269.55
			BULK GASOHOL/DIESEL	1,431.12
			BULK GASOHOL/DIESEL	260.36
		GULF STATES DISTRIBUTORS	AMMO FROM 2021 ORDER	676.00
		HD GRAPHICS & APPAREL	BRAND APPAREAL	407.50
		MIDWEST PUBLIC RISK	DENTAL	216.00
			DENTAL	462.80
			DENTAL	34.90-
			STAAT	52.00-
			ARENDS	56.00
			BALL	24.00
			BEALE	428.00-
			BREEDLOVE	642.00
			CARR	62.00
			CROWL-HUTCHEMS	30.00
			CUMMINGS	30.00
			GILDEHAUS	62.00
			HEDGER	30.00
			IIAMS	86.00
			JAMES	30.00
			LANCASTER	86.00
			PALECEK	86.00
			ROMANO	30.00
			SEARCY	24.00
			STAAT	24.00
			STRATTON	64.00
			TAYLOR	46.00
			THOMPSON B	46.00
			THOMPSON C	30.00
			THOMPSON S	86.00
			THROWER	30.00
			VANDER LINDEN	86.00
			WERGES	30.00
			WISE	86.00
			BEALE	6.00-
			HEDGER	8.00
			STAAT	8.00-
			OPEN ACCESS	1,309.50
			OPEN ACCESS	1,194.00
			OPEN ACCESS	861.45
			OPEN ACCESS	758.10
			HSA	1,703.60
			HSA	2,889.00
			HSA	306.00-
			HSA	4,184.10

DEPARTMENT	FUND	VENDOR NAME	DESCRIPTION	AMOUNT	
			VISION	8.00	
		HSA BANK	HSA - GRAIN VALLEY, MO	600.00	
			HSA - GRAIN VALLEY, MO	900.00	
		INTERNAL REVENUE SERVICE	SOCIAL SECURITY	6,665.13	
			SOCIAL SECURITY	3,425.42	
			SOCIAL SECURITY	3.34	
			MEDICARE	2,742.63	
			MEDICARE	801.13	
			MEDICARE	0.78	
		JACKSON COUNTY MGR OF FINANCE	DISPATCH SERVICES	<u>8,157.20</u>	
			TOTAL:	59,097.07	
ANIMAL CONTROL	GENERAL FUND	MISSOURI LAGERS	MONTHLY CONTRIBUTIONS	175.44	
		STANDARD INSURANCE CO	JULY 22 STANDARD LIFE INSU	13.00	
		HAMPEL OIL INC	BULK GASOHOL/DIESEL	63.18	
			BULK GASOHOL/DIESEL	144.11	
			BULK GASOHOL/DIESEL	43.82	
		MIDWEST PUBLIC RISK	TUTTLE K	24.00	
			OPEN ACCESS	398.00	
		INTERNAL REVENUE SERVICE	SOCIAL SECURITY	87.72	
			MEDICARE	<u>20.52</u>	
			TOTAL:	969.79	
PLANNING & ENGINEERING	GENERAL FUND	MISSOURI LAGERS	MONTHLY CONTRIBUTIONS	856.41	
		STANDARD INSURANCE CO	JULY 22 STANDARD LIFE INSU	38.97	
		HAMPEL OIL INC	BULK GASOHOL/DIESEL	111.78	
			BULK GASOHOL/DIESEL	202.65	
			BULK GASOHOL/DIESEL	59.21	
		HD GRAPHICS & APPAREL	BRAND APPAREAL	2,483.00	
		MIDWEST PUBLIC RISK	DENTAL	49.43	
			DENTAL	10.22	
			ALEXANDER	30.00	
			DRAPER	30.00	
			RUSSELL	30.00	
			SELCK	30.00	
			OPEN ACCESS	113.71	
			HSA	881.33	
			HSA	87.73	
		HSA BANK	HSA - GRAIN VALLEY, MO	205.92	
			HSA - GRAIN VALLEY, MO	14.28	
		INTERNAL REVENUE SERVICE	SOCIAL SECURITY	462.99	
			MEDICARE	108.28	
		GRECO LAWN & MAINTENANCE LLC	MOWING	<u>251.25</u>	
			TOTAL:	6,057.16	
NON-DEPARTMENTAL	PARK FUND	KCMO CITY TREASURER	KC EARNINGS TAX WH	27.01	
		MO DEPT OF REVENUE	MISSOURI WITHHOLDING	591.62	
		FAMILY SUPPORT PAYMENT CENTER	SMITH CASE 91316387	92.31	
		AFLAC	AFLAC CRITICAL CARE	6.78	
			AFLAC PRETAX	54.44	
			AFLAC-W2 DD PRETAX	57.17	
		MISCELLANEOUS BRIA CARRAWAY	REFUND BRIA CARRAWAY	155.00	
			LIFE LINE SCREENING	REFUND: LIFE LINE SCREENIN	150.00
			MARCIA NAPIER	MARCIA NAPIER:	50.00
			JANET MARTIN	JANET MARTIN:	50.00
			GEOFF BARKER	GEOFF BARKER:	50.00

DEPARTMENT	FUND	VENDOR NAME	DESCRIPTION	AMOUNT
		MELISSA MORRIS	MELISSA MORRIS:	50.00
		MIDWEST PUBLIC RISK	DENTAL	12.65
			HSA	127.93
			HSA	39.64
			VISION	8.00
			VISION	17.17
			VISION	2.15
		HSA BANK	HSA - GRAIN VALLEY, MO	177.26
			HSA - GRAIN VALLEY, MO	113.81
		CITY OF GRAIN VALLEY -FLEX	FLEX - DEPENDENT CARE	55.59
		MISSIONSQUARE RETIREMENT	MISSIONSQUARE 457 %	240.20
			MISSIONSQUARE 457	224.05
			MISSIONSQUARE ROTH IRA	146.93
			MISSIONSQUARE ROTH IRA	42.17
		INTERNAL REVENUE SERVICE	FEDERAL WH	1,647.84
			SOCIAL SECURITY	1,532.93
			MEDICARE	<u>358.52</u>
			TOTAL:	6,081.17
PARK ADMIN	PARK FUND	NETSTANDARD INC	Clarity Services	616.44
		SUPERIOR BOWEN ASPHALT CO LLC	2022 Pavement Program	11,580.56
		MISSOURI LAGERS	MONTHLY CONTRIBUTIONS	836.04
		AT&T	U-VERSE PARK MAINTENANCE	159.08
		STANDARD INSURANCE CO	JULY 22 STANDARD LIFE INSU	35.00
		HAMPEL OIL INC	BULK GASOHOL/DIESEL	560.22
			BULK GASOHOL/DIESEL	194.93
			BULK GASOHOL/DIESEL	849.19
		HD GRAPHICS & APPAREL	BRAND APPAREAL	192.50
			BRAND APPAREAL	105.00
		MIDWEST PUBLIC RISK	DENTAL	21.49
			DENTAL	48.52
			CRUTCHFIELD	30.00
			DAVIES	62.00
			HSA	633.42
			HSA	383.27
			HSA	136.39
		HSA BANK	HSA - GRAIN VALLEY, MO	89.55
			HSA - GRAIN VALLEY, MO	139.01
		INTERNAL REVENUE SERVICE	SOCIAL SECURITY	406.89
			MEDICARE	<u>95.16</u>
			TOTAL:	17,174.66
PARKS STAFF	PARK FUND	MISSOURI LAGERS	MONTHLY CONTRIBUTIONS	692.27
		STANDARD INSURANCE CO	JULY 22 STANDARD LIFE INSU	39.00
		MIDWEST PUBLIC RISK	DENTAL	54.00
			JONES	30.00
			SMITH	30.00
			WELCH	30.00
			HSA	963.00
		HSA BANK	HSA - GRAIN VALLEY, MO	225.00
		VIKING-CIVES MIDWEST INC	FEMALE SWIVEL	73.80
		LAWN & LEISURE	GREASE & DRIVE SHAFT	38.96
		INTERNAL REVENUE SERVICE	SOCIAL SECURITY	417.07
			MEDICARE	<u>97.55</u>
			TOTAL:	2,690.65

DEPARTMENT	FUND	VENDOR NAME	DESCRIPTION	AMOUNT		
RECREATION	PARK FUND	OAK GROVE GIRLS SOFTBALL (OGGS)	Softball Umpire Fees	915.00		
		INTERNAL REVENUE SERVICE	SOCIAL SECURITY	96.43		
			MEDICARE	<u>22.54</u>		
			TOTAL:	1,033.97		
COMMUNITY CENTER	PARK FUND	MISSOURI LAGERS	MONTHLY CONTRIBUTIONS	232.60		
		STANDARD INSURANCE CO	JULY 22 STANDARD LIFE INSU	26.00		
		RICOH USA INC	COMM CTR C85162114	479.26		
			COMM CTR C85162123	68.62		
		HD GRAPHICS & APPAREL	BRAND APPAREAL	350.00		
		MIDWEST PUBLIC RISK	DENTAL	36.00		
			MEYER	30.00		
			ROOT	30.00		
			HSA	642.00		
		HSA BANK	HSA - GRAIN VALLEY, MO	150.00		
		STANGER INDUSTRIES INC	Replace AC Compressor	18,329.00		
		MARY ALLGRUNN	6/14-6/23 LINE DANCING	155.85		
		SAMANTHA PETRALIE	6/13/6/24 SILVERSNEAKERS	150.00		
		INTERNAL REVENUE SERVICE	SOCIAL SECURITY	277.23		
			MEDICARE	64.83		
		JULIE HENGEL	6/13-6/20 SILVERSNEAKERS	<u>50.00</u>		
			TOTAL:	21,071.39		
		POOL	PARK FUND	RENEE J HODOWAINE		662.40
				SAMS CLUB/GEGRB	Concessions Food	571.46
	Concessions Food			474.58		
INTERNAL REVENUE SERVICE	SOCIAL SECURITY			335.31		
	MEDICARE			<u>78.44</u>		
	TOTAL:	2,122.19				
NON-DEPARTMENTAL	TRANSPORTATION	MO DEPT OF REVENUE	MISSOURI WITHHOLDING	173.03		
		FAMILY SUPPORT PAYMENT CENTER	GROVE CASE 71049484	27.69		
			DZEKUNSKAS CASE 41452523	30.00		
		AFLAC	AFLAC PRETAX	4.64		
			AFLAC-W2 DD PRETAX	8.05		
		MIDWEST PUBLIC RISK	DENTAL	13.59		
			OPEN ACCESS	27.65		
			OPEN ACCESS	29.09		
			HSA	42.84		
			HSA	107.10		
			HSA	121.59		
			HSA	22.55		
			VISION	1.60		
			VISION	1.36		
			VISION	4.00		
			VISION	4.40		
			VISION	2.34		
		HSA BANK	HSA - GRAIN VALLEY, MO	8.19		
			HSA - GRAIN VALLEY, MO	62.02		
		MISSIONSQUARE RETIREMENT	MISSIONSQUARE 457 %	69.00		
			MISSIONSQUARE 457	46.00		
			MISSIONSQUARE ROTH IRA	46.00		
		INTERNAL REVENUE SERVICE	FEDERAL WH	504.96		
	SOCIAL SECURITY	286.76				
	SOCIAL SECURITY	6.89				
	MEDICARE	67.05				

DEPARTMENT	FUND	VENDOR NAME	DESCRIPTION	AMOUNT
			MEDICARE	<u>1.61</u>
			TOTAL:	1,497.80
TRANSPORTATION	TRANSPORTATION	NETSTANDARD INC	Server Back-up Services	196.00
			Clarity Services	369.86
			OFFICE 365	196.90
		SUPERIOR BOWEN ASPHALT CO LLC	2022 Pavement Program	520,000.00
		FELDMANS FARM & HOME	STRAW BALES	39.95
		MISSOURI LAGERS	MONTHLY CONTRIBUTIONS	577.17
		ADVANCE AUTO PARTS	AC O-RING	0.50
		STANDARD INSURANCE CO	JULY 22 STANDARD LIFE INSU	24.22
		SHOW ME READY MIX LLC	VALLEY RIDGE ROAD REPAIR	1,685.00
		OREILLY AUTOMOTIVE INC	CAPSULE	9.11
			8 OZ PAG OIL	2.29
		RICOH USA INC	20% PW C85162113	95.86
		HAMPEL OIL INC	BULK GASOHOL/DIESEL	260.31
			BULK GASOHOL/DIESEL	152.46
			BULK GASOHOL/DIESEL	137.44
		HOME DEPOT CREDIT SERVICES	7/16 OSB	95.40
			PIPE WRENCH, RACHETS, & TO	31.47
			FLASH LIGHT	4.86
			FLASH LIGHT	3.99
			SCREWS	7.98
		HD GRAPHICS & APPAREL	BRAND APPAREAL	47.00
		MIDWEST PUBLIC RISK	DENTAL	10.63
			DENTAL	3.60-
			DENTAL	52.10
			OPEN ACCESS	130.94
			OPEN ACCESS	113.71
			HSA	212.12
			HSA	100.98-
			HSA	189.69
			HSA	418.40
			HSA	87.73
		HSA BANK	HSA - GRAIN VALLEY, MO	44.32
			HSA - GRAIN VALLEY, MO	114.28
		CINTAS CORPORATION # 430	PW UNIFORMS	26.58
		LAMP RYNEARSON INC	Stormwater Master Plan	9,780.00
		QUALITY CUSTOM CONCEPTS INC	CONCRETE REPLACEMENTS	105,000.00
		KIRBY-SMITH MACHINERY INC	WHEEL LOADER RENTAL	139.40
		CSTK INC	CONDENSER	81.64
		OAK GROVE RENTAL INC	MANLIFT RENTAL	50.00
			DINGO WIDE TRACK SKID STEE	60.00
		OSBURN ASSOCIATES INC	VINYL FOR NEW DECALS	862.50
			VINYL FOR NEW DECALS	180.00
			VINYL FOR NEW DECALS	705.00
			VINYL FOR NEW DECALS	864.00
		RUSH TRUCK CENTER	MIRROR KIT	41.00
		INTERNAL REVENUE SERVICE	SOCIAL SECURITY	286.74
			SOCIAL SECURITY	1.38
			MEDICARE	67.05
			MEDICARE	<u>0.32</u>
			TOTAL:	643,352.72
CAPITAL IMPROVEMENTS	CAPITAL PROJECTS F	SUPERIOR BOWEN ASPHALT CO LLC	2022 Pavement Program	<u>293,808.71</u>
			TOTAL:	293,808.71

DEPARTMENT	FUND	VENDOR NAME	DESCRIPTION	AMOUNT
NON-DEPARTMENTAL	MKTPL TIF-PR#2 SPE UMB BANK		MKTPL TIF PRO #2 SALES/CID	<u>43,751.94</u>
			TOTAL:	43,751.94
NON-DEPARTMENTAL	MKT PL CID-PR2 SAL UMB BANK		MKTPL TIF PRO #2 SALES/CID	19,021.92
			MKTPL TIF PRO #2 SALES/CID	<u>18,451.25</u>
			TOTAL:	37,473.17
NON-DEPARTMENTAL	WATER/SEWER FUND	MO DEPT OF REVENUE	MISSOURI WITHHOLDING	1,151.57
		FAMILY SUPPORT PAYMENT CENTER	GROVE CASE 71049484	110.77
			DZEKUNSKAS CASE 41452523	120.00
		AFLAC	AFLAC PRETAX	36.21
			AFLAC-W2 DD PRETAX	52.57
	MISCELLANEOUS	WILLIAMS, CHARLES G	10-137400-01	50.00
		HICKS, TJ	10-252900-07	50.00
		YOUNG, RICHARD	10-341400-02	50.00
		YOUNG, RICHARD	10-341500-03	50.00
		YOUNG, RICHARD	10-343400-00	50.00
		YOUNG, RICHARD	10-343500-00	50.00
		SBD HOUSING SOLUTION	10-412650-04	50.00
		EJC RENTALS, LLC	10-487470-03	50.00
		SANDERS-NIZZA, SUNNY	10-505580-02	50.00
		CLASSIC BUILDING, IN	10-830400-01	250.00
		DAVCOR, INC	10-900970-05	50.00
		YOUNG, RICHARD	20-116300-01	50.00
		CANAAN, PAUL	20-199680-10	50.00
		PILLA, DOMINIC	20-620400-02	50.00
		STORYBOOK REALTY	20-707251-02	50.00
		LOCK CUSTOM HOMES	20-711820-02	50.00
		COONTS, JEREMY	10-244700-09	50.00
		GANNON, LOIS A	20-125900-00	0.63
		BUTZ, JIM	20-562840-12	50.00
		MILLER, WILLIAM D	20-152660-19	15.54
		MANNA MIDWEST, LLC	20-199920-14	36.20
		WILLIAM, THEORTRA	20-260100-02	13.75
		BATES, JONAH	20-568106-01	1.50
		HEIN, DAVID	20-568139-01	30.36
		DOERING, LEROY	20-568154-01	30.32
		MCDANIEL, ZACHARY	20-588421-04	62.86
		SIMONS, JACKSON	20-589442-01	65.54
		HENDRICKS, KATHLEEN	20-620770-05	11.75
		UPSHAW, HERBERT	20-622170-08	15.54
		FOUSHEE HOMES, INC	20-623748-00	15.54
		BOGLE, ALISSA	20-683600-03	49.46
		WOOLARD, DARREL	20-701210-08	37.08
		WOODWARD, JACQUELINE	20-701380-11	30.30
		PETERSON, ASHLEY	20-701571-08	23.55
		CARTY, JOSHUA	20-701730-07	65.54
		HICKS, SUSAN	20-701860-03	22.15
		DONALDSON, RACHEL	20-709380-06	19.43
		RICHARDSON, KAILYN	20-711081-02	8.64
		SAGE DOOR PROPERTIES	10-150200-12	200.00
		SAGE DOOR PROPERTIES	20-700930-09	38.29
	MIDWEST PUBLIC RISK		DENTAL	84.46
			OPEN ACCESS	110.60
			OPEN ACCESS	135.73
			HSA	363.47

DEPARTMENT	FUND	VENDOR NAME	DESCRIPTION	AMOUNT
			HSA	646.40
			HSA	112.75
			VISION	6.40
			VISION	13.27
			VISION	26.29
			VISION	15.19
		HSA BANK	HSA - GRAIN VALLEY, MO	62.49
			HSA - GRAIN VALLEY, MO	392.73
		CITY OF GRAIN VALLEY -FLEX	FLEX - DEPENDENT CARE	226.47
		MISSIONSQUARE RETIREMENT	MISSIONSQUARE 457 %	464.15
			MISSIONSQUARE 457	394.96
			MISSIONSQUARE ROTH IRA	272.66
		INTERNAL REVENUE SERVICE	FEDERAL WH	3,510.76
			SOCIAL SECURITY	2,034.53
			MEDICARE	<u>475.85</u>
			TOTAL:	12,714.25
WATER	WATER/SEWER FUND	NETSTANDARD INC	Server Back-up Services	392.00
			Clarity Services	739.73
			OFFICE 365	393.80
		PEREGRINE CORPORATION	BILL PRINT AND MAIL	641.32
			BILL PRINT AND MAIL	111.26
			BILL PRINT AND MAIL	642.39
			BILL PRINT AND MAIL	111.46
		MO DEPT OF NATURAL RESOURCES	08/2022 OPERATING PERMIT	250.00
		MISSOURI LAGERS	MONTHLY CONTRIBUTIONS	2,008.55
		ADVANCE AUTO PARTS	AC O-RING	1.01
		OFFICE DEPOT	PW EVENTS BANNERS	469.97
		STANDARD INSURANCE CO	JULY 22 STANDARD LIFE INSU	90.26
		OREILLY AUTOMOTIVE INC	CAPSULE	18.24
			8 OZ PAG OIL	4.58
		TRI-COUNTY WATER AUTHORITY	JUNE 2022 TRI COUNTY WATER	27,107.10
			JUNE 2022 TRI COUNTY WATER	63,186.34
		BLUE SPRINGS WINWATER CO	WATER SERVICE MATERIALS	915.00
			3/4 RUBBER GASKET	20.00
		RICOH USA INC	40% PW C85162113	191.70
			50% CD C85162115	239.63
			25% ADMIN C85162117	119.82
			25% MAILRM C85162118	119.82
		HAMPEL OIL INC	BULK GASOHOL/DIESEL	520.59
			BULK GASOHOL/DIESEL	304.94
			BULK GASOHOL/DIESEL	274.86
		FASTENAL COMPANY	36" BLACK CABLE TIE	19.25
		HOME DEPOT CREDIT SERVICES	MAX VOLT BATTERY	44.24
			PIPE WRENCH, RACHETS, & TO	62.94
			FLASH LIGHT	9.74
			FLASH LIGHT	7.99
		HD GRAPHICS & APPAREL	BRAND APPAREAL	802.49
		MIDWEST PUBLIC RISK	DENTAL	46.16
			DENTAL	7.20-
			DENTAL	161.98
			GENTRY	52.00
			AMBROSE	30.00
			DZEKUNSKAS	62.00
			GENTRY	330.00
			GROVE	30.00

DEPARTMENT	FUND	VENDOR NAME	DESCRIPTION	AMOUNT
			MARTIN	62.00
			MELHORN	46.00
			MYERS	86.00
			TROSEN	74.00
			TUTTLE R	434.00
			WELSH	86.00
			GENTRY	16.00-
			OPEN ACCESS	261.91
			OPEN ACCESS	265.33
			HSA	899.86
			HSA	201.96-
			HSA	901.05
			HSA	1,112.19
			HSA	219.35
		HSA BANK	HSA - GRAIN VALLEY, MO	210.52
			HSA - GRAIN VALLEY, MO	364.90
		CORE & MAIN LP	NEW WATER SERVICE PARTS	553.42
		JOHN DEERE FINANCIAL	VALVE	49.99
		CINTAS CORPORATION # 430	PW UNIFORMS	53.15
		LAMP RYNEARSON INC	ENGINEERING SERVICES	4,075.68
		KIRBY-SMITH MACHINERY INC	WHEEL LOADER RENTAL	278.80
		CSTK INC	CONDENSER	163.29
		OAK GROVE RENTAL INC	MANLIFT RENTAL	100.00
			DINGO WIDE TRACK SKID STEE	120.00
		TYLER TECHNOLOGIES INC	JULY MONTHLY FEES	97.00
		RUSH TRUCK CENTER	MIRROR KIT	82.00
		SCHULTE SUPPLY INC	WATER SERVICE MATERIALS	1,844.25
		INTERNAL REVENUE SERVICE	SOCIAL SECURITY	1,017.28
			SOCIAL SECURITY	2.76
			MEDICARE	237.91
			MEDICARE	<u>0.64</u>
			TOTAL:	114,007.28
SEWER	WATER/SEWER FUND	NETSTANDARD INC	Server Back-up Services	392.00
			Clarity Services	739.73
			OFFICE 365	393.80
		PEREGRINE CORPORATION	BILL PRINT AND MAIL	641.32
			BILL PRINT AND MAIL	111.27
			BILL PRINT AND MAIL	642.40
			BILL PRINT AND MAIL	111.46
		MISSOURI LAGERS	MONTHLY CONTRIBUTIONS	2,008.51
		ADVANCE AUTO PARTS	AC O-RING	1.01
		STANDARD INSURANCE CO	JULY 22 STANDARD LIFE INSU	90.25
		OREILLY AUTOMOTIVE INC	CAPSULE	18.24
			8 OZ PAG OIL	4.58
		RICOH USA INC	40% PW C85162113	191.70
			50% CD C85162115	239.63
			25% ADMIN C85162117	119.82
			25% MAILRM C85162118	119.82
		HAMPEL OIL INC	BULK GASOHOL/DIESEL	520.59
			BULK GASOHOL/DIESEL	304.94
			BULK GASOHOL/DIESEL	274.86
		HOME DEPOT CREDIT SERVICES	PIPE WRENCH, RACHETS, & TO	62.94
			FLASH LIGHT	9.74
			FLASH LIGHT	7.99
		HD GRAPHICS & APPAREL	BRAND APPAREAL	802.49

DEPARTMENT	FUND	VENDOR NAME	DESCRIPTION	AMOUNT
		MIDWEST PUBLIC RISK	DENTAL	46.16
			DENTAL	7.20-
			DENTAL	162.00
			OPEN ACCESS	261.90
			OPEN ACCESS	265.35
			HSA	899.87
			HSA	201.96-
			HSA	900.99
			HSA	1,112.19
			HSA	219.34
		HSA BANK	HSA - GRAIN VALLEY, MO	210.51
			HSA - GRAIN VALLEY, MO	364.89
		CINTAS CORPORATION # 430	PW UNIFORMS	53.15
		KIRBY-SMITH MACHINERY INC	WHEEL LOADER RENTAL	278.80
		CSTK INC	CONDENSER	163.29
		OAK GROVE RENTAL INC	MANLIFT RENTAL	100.00
			DINGO WIDE TRACK SKID STEE	120.00
		TYLER TECHNOLOGIES INC	JULY MONTHLY FEES	97.00
		RUSH TRUCK CENTER	MIRROR KIT	82.00
		INTERNAL REVENUE SERVICE	SOCIAL SECURITY	1,017.31
			SOCIAL SECURITY	2.75
			MEDICARE	237.97
			MEDICARE	0.65

* REFUND CHECKS *

DEPARTMENT	FUND	VENDOR NAME	DESCRIPTION	AMOUNT
NON-DEPARTMENTAL	WATER/SEWER FUND	WILLIAMS, CHARLES G	US REFUNDS	50.00
		STORYBOOK REALTY	US REFUNDS	50.00
		HICKS, TJ	US REFUNDS	50.00
		YOUNG, RICHARD	US REFUNDS	50.00
		YOUNG, RICHARD	US REFUNDS	50.00
		YOUNG, RICHARD	US REFUNDS	50.00
		YOUNG, RICHARD	US REFUNDS	50.00
		SBD HOUSING SOLUTIONS	US REFUNDS	50.00
		EJC RENTALS, LLC	US REFUNDS	50.00
		SANDERS-NIZZA, SUNNY	US REFUNDS	50.00
		CLASSIC BUILDING, INC.	US REFUNDS	250.00
		DAVCOR, INC	US REFUNDS	50.00
		YOUNG, RICHARD	US REFUNDS	50.00
		CANAAN, PAUL	US REFUNDS	50.00
		PILLA, DOMINIC	US REFUNDS	50.00
		STORYBOOK REALTY	US REFUNDS	50.00
		LOCK CUSTOM HOMES	US REFUNDS	50.00
		HOWELL, NAVADA	US REFUNDS	<u>100.00</u>
			TOTAL:	15,346.05

===== FUND TOTALS =====

100	GENERAL FUND	197,570.69
200	PARK FUND	50,174.03
210	TRANSPORTATION	644,850.52
280	CAPITAL PROJECTS FUND	293,808.71
302	MKTPL TIF-PR#2 SPEC ALLOC	43,751.94
321	MKT PL CID-PR2 SALES/USE	37,473.17
600	WATER/SEWER FUND	142,067.58

	GRAND TOTAL:	1,409,696.64

SELECTION CRITERIA

SELECTION OPTIONS

VENDOR SET: 01-CITY OF GRAIN VALLEY
VENDOR: All
CLASSIFICATION: All
BANK CODE: All
ITEM DATE: 6/21/2022 THRU 7/01/2022
ITEM AMOUNT: 99,999,999.00CR THRU 99,999,999.00
GL POST DATE: 0/00/0000 THRU 99/99/9999
CHECK DATE: 0/00/0000 THRU 99/99/9999

PAYROLL SELECTION

PAYROLL EXPENSES: NO
EXPENSE TYPE: N/A
CHECK DATE: 0/00/0000 THRU 99/99/9999

PRINT OPTIONS

PRINT DATE: None
SEQUENCE: By Department
DESCRIPTION: Distribution
GL ACCTS: NO
REPORT TITLE: C O U N C I L R E P O R T
SIGNATURE LINES: 0

PACKET OPTIONS

INCLUDE REFUNDS: YES
INCLUDE OPEN ITEM: YES

Resolutions

INTENTIONALLY LEFT BLANK

**CITY OF GRAIN VALLEY
BOARD OF ALDERMEN AGENDA ITEM**

MEETING DATE	07/11/2022	
BILL NUMBER	R22-55	
AGENDA TITLE	A RESOLUTION BY THE BOARD OF ALDERMEN OF THE CITY OF GRAIN VALLEY, MISSOURI AUTHORIZING THE OFFERING FOR SALE OF GENERAL OBLIGATION BONDS FOR THE BENEFIT OF THE CITY OF GRAIN VALLEY, MISSOURI	
REQUESTING DEPARTMENT	Administration & Finance	
PRESENTER	Ken Murphy, City Administrator Steven Craig, Finance Director	
FISCAL INFORMATION	Cost as recommended:	N/A
	Budget Line Item:	N/A
	Balance Available:	N/A
	New Appropriation Required:	<input checked="" type="checkbox"/> Yes <input type="checkbox"/> No
PURPOSE	To approve a resolution authorizing the sale of approximately \$14,000,000 of General Obligation Bonds for a new Police Department facility.	
BACKGROUND	The voters approved the ballot question in April for the issuance of the general obligation bonds for the site development and construction of a new police facility.	
SPECIAL NOTES	The City's legal counsel from Gilmore and Bell drafted the resolution.	
ANALYSIS	The City's Financial Advisor, BakerTilly has provided a pre-sale summary for the bond issuance.	
PUBLIC INFORMATION PROCESS	N/A	
BOARD OR COMMISSION RECOMMENDATION	N/A	
DEPARTMENT RECOMMENDATION	Staff Recommends Approval	

**REFERENCE DOCUMENTS
ATTACHED**

Resolution and Pre-Sale Summary

CITY OF
GRAIN VALLEY

STATE OF
MISSOURI

July 11, 2022

RESOLUTION NUMBER

R22-55

**A RESOLUTION BY THE BOARD OF ALDERMEN OF THE CITY OF GRAIN VALLEY,
MISSOURI AUTHORIZING THE OFFERING FOR SALE OF GENERAL
OBLIGATION BONDS FOR THE BENEFIT OF THE CITY OF GRAIN VALLEY,
MISSOURI**

WHEREAS, the City of Grain Valley, Missouri (the "City"), has selected the firm of Gilmore & Bell, P.C., as bond counsel ("Bond Counsel"), and Baker Tilly Municipal Advisors, LLC, as municipal advisor (the "Municipal Advisor"), for a series of general obligation bonds in the approximate principal amount of \$14,000,000 (the "Bonds") for the purpose of financing the costs of site development and the construction, furnishing and equipping of a police facility (the "Project"); and

WHEREAS, the City desires to authorize the offering for sale of the Bonds pursuant to a competitive public sale, and to authorize the Municipal Advisor, Bond Counsel and the officers of the City to proceed with the preparation, review and distribution of documents for the sale.

NOW, THEREFORE, BE IT RESOLVED by the Board of Aldermen of the City of Grain Valley, Missouri, as follows:

SECTION 1. The Municipal Advisor, Bond Counsel and the officers of the City are hereby authorized to proceed with preparation of a notice of sale (the "Notice of Sale"), a preliminary official statement (the "Preliminary Official Statement") and a final official statement (the "Official Statement") to provide for the competitive public sale of the Bonds. Upon completion of the preparation and review of the Notice of Sale and the Preliminary Official Statement, the Municipal Advisor is hereby authorized to proceed with the offering for sale of the Bonds. The final terms of the Bonds shall be determined and approved by subsequent ordinance of the Board of Aldermen of the City.

SECTION 2. The Board of Aldermen hereby authorizes the execution of the final Official Statement by the Mayor, the City Administrator, Finance Director or other appropriate officers of the City with such changes and additions thereto as such officials shall deem necessary or appropriate, such official's signature thereon being conclusive evidence of such official's and the City's approval thereof. The Board of Aldermen hereby consents to the use and public distribution by the Municipal Advisor of the Notice of Sale, the Preliminary Official Statement and the final Official Statement in connection with the competitive public offering for sale of the Bonds.

SECTION 3. For the purpose of enabling the successful bidder for the Bonds (the "Purchaser") to comply with the requirements of Rule 15c2-12(b)(1) of the Securities and Exchange Commission, the Mayor, the City Administrator, Finance Director or other appropriate officers of the City are hereby authorized, if requested, to provide the Purchaser a letter or certification to the effect that the City deems the information contained in the Preliminary Official

[R22-55]

Statement to be “final” as of its date, except for the omission of such information as is permitted by Rule 15c2-12(b)(1), and to take such other actions or execute such other documents as such officers in their reasonable judgment deem necessary to enable the Purchaser to comply with the requirements of such Rule.

SECTION 4. The City agrees to provide to the Purchaser within seven business days of the date of the agreement to purchase the Bonds or within sufficient time to accompany any confirmation that requests payment from any customer of the Purchaser, whichever is earlier, sufficient copies of the final Official Statement to enable the Purchaser to comply with the requirements of Rule 15c2-12(b)(4) of the Securities and Exchange Commission and with the requirements of Rule G-32 of the Municipal Securities Rulemaking Board.

SECTION 5. The Mayor, the City Administrator, Finance Director and other officers and representatives of the City, the Municipal Advisor and Bond Counsel are hereby authorized and directed to take all necessary actions as may be necessary to carry out the competitive public sale and offering of the Bonds.

SECTION 6. This Resolution shall be in full force and effect from and after its adoption by the Board of Aldermen.

PASSED and APPROVED, via voice vote (____,____), this ____ day of July, 2022.

Mike Todd
Mayor

ATTEST:

Jamie Logan
City Clerk

City of Grain Valley, Missouri Pre-Sale Summary for Issuance of Bonds

\$13,580,000 General Obligation Bonds, Series 2022A

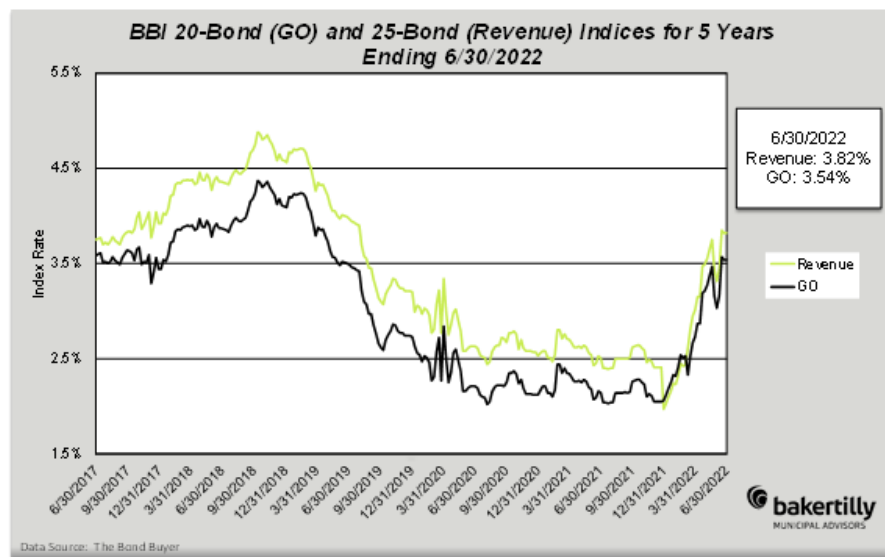
The Board of Aldermen has under the consideration the issuance of bonds (the "Bonds") to finance the site development and the construction, furnishing, and equipping of a police facility. This document provides information relative to the proposed issuance.

KEY EVENTS: The following summary schedule includes the timing of key events that will occur relative to the bond issuance:

July 11, 2022	Board of Alderman sets sale date and terms
Week of July 25, 2022	Rating conference is conducted
August 8, 2022, 10:30 a.m.	Competitive bids are received
August 8, 2022, 7:00 p.m.	Board of Alderman considers award of the Bonds
August 31, 2022	Proceeds are received

RATING: An application will be made to S&P Global Ratings (S&P) for a rating on the Bonds. The City's general obligation debt is currently rated "AA-" by S&P.

THE MARKET: Performance of the tax-exempt market is often measured by the Bond Buyer's Index ("BBI") which measures the yield of high-grade municipal bonds in the 20th year for general obligation bonds rated Aa2 by Moody's or AA by S&P (the BBI 20-Bond GO Index) and the 30th year for revenue bonds rated A1 by Moody's or A+ by S&P (the BBI 25-Bond Revenue Index). The following chart illustrates these two indices over the past five years:



PURPOSE: Proceeds of the Bonds will be used for the site development and the construction, furnishing, and equipping of a police facility.

AUTHORITY: The Bonds are being issued pursuant to Missouri Constitution, 1945, and Chapters 95 and 108.140 *et seq.*, of the Revised Statutes of Missouri, all as amended and approved by voter referendum held by the City on April 5, 2022.

SECURITY AND SOURCE OF PAYMENT: The Bonds will be a general obligation of the City and will be payable as to both principal and interest from ad valorem taxes, which may be levied without limitation as to rate or amount upon all the taxable tangible property, real and personal, within the territorial limits of the City.

The City will certify the property tax levy in September of each year preceding the calendar year in which debt service is due. Property taxes are due and collected by December 31 of the levy year. Each year's collection of taxes will be used to pay the principal and interest payment due March 1 and the interest payment due September 1 in the following year.

STRUCTURING SUMMARY: In consultation with City staff, the Bonds have been structured around existing debt and an annual debt limit constraint to produce overall level aggregate debt service. To comply with these constraints and using a conservative assessed value growth assumption, the resulting principal repayment term for the Bonds is nine (9) years beginning with principal beginning in 2025 and interest only payments in 2023 and 2024.

The City will contribute cash in an amount that will pay the estimated costs of issuance.

SCHEDULES ATTACHED: Schedules attached for the Bonds include (i) sources and uses of funds, (ii) estimated pricing summary, and (iii) estimated debt service requirements, given the current interest rate environment.

RISKS/SPECIAL CONSIDERATIONS: Any projections included herein are estimates at the time this document was prepared and are developed based on current conditions in the municipal market. Market conditions fluctuate daily and can result in significant changes in yields and prices. Future market fluctuations from now until the day of pricing could impact the projected debt service.

The Bonds have been structured with a reasonable estimate of premium pricing, given current market conditions. There is no guarantee that the winning bidder will price this issue with a premium in the amount estimated. Actual bids received on the day of sale may result in a smaller or larger issue size than estimated here.

SALE TERMS AND MARKETING: Variability of Issue Size: A specific provision in the sale terms permits modifications to the issue size and/or maturity structure once the price and interest rates are set on the day of sale.

Prepayment Provisions: Bonds maturing on or after March 1, 2032 may be prepaid at a price of par plus accrued interest on or after March 1, 2031.

Bank Qualification: The City expects to issue more than \$10 million in tax-exempt obligations in 2022; therefore, the Bonds are not designated as bank qualified.

Post Issuance

POST ISSUANCE COMPLIANCE:

The issuance of the Bonds will result in post-issuance compliance responsibilities. The responsibilities are in two primary areas: (i) compliance with federal arbitrage requirements and (ii) compliance with secondary disclosure requirements.

Federal arbitrage requirements include a wide range of implications that have been taken into account as this issue has been structured. Post-issuance compliance responsibilities for this tax-exempt issue include both rebate and yield restriction provisions of the IRS Code. In general terms the arbitrage requirements control the earnings on unexpended bond proceeds, including investment earnings, moneys held for debt service payments (which are considered to be proceeds under the IRS regulations), and/or reserves. Under certain circumstances any “excess earnings” will need to be paid to the IRS to maintain the tax-exempt status of the Bonds. Any interest earnings on gross bond proceeds or debt service funds should not be spent until it has been determined based on actual facts that they are not “excess earnings” as defined by the IRS Code.

The arbitrage rules provide for spend-down exceptions for proceeds that are spent within either a 6-month, 18-month or, for certain construction issues, a 24-month period each in accordance with certain spending criteria. Proceeds that qualify for an exception will be exempt from rebate. These exceptions are based on actual expenditures and not based on reasonable expectations, and expenditures, including any investment proceeds will have to meet the spending criteria to qualify for the exclusion. The City expects to meet the 18-month spending exception.

Regardless of whether the issue qualifies for an exemption from the rebate provisions, yield restriction provisions will apply to Bond proceeds (including interest earnings) unspent after three years and the debt service fund throughout the term of the Bonds. These moneys should be monitored until the Bonds are retired.

Secondary disclosure requirements result from an SEC requirement that underwriters provide ongoing disclosure information to investors. To meet this requirement, any prospective underwriter will require the City to commit to providing the information needed to comply under a continuing disclosure agreement.

SUPPLEMENTAL INFORMATION:

Supplementary information will be available to staff including detailed terms and conditions of sale, comprehensive structuring schedules and information to assist in meeting post-issuance compliance responsibilities.

\$13,580,000

City of Grain Valley, Missouri
General Obligation Bonds, Series 2022A

Sources & Uses

Dated 08/31/2022 | Delivered 08/31/2022

Sources Of Funds

Par Amount of Bonds.....	\$13,580,000.00
Reoffering Premium.....	410,513.05
City Cash Contribution for COI.....	302,780.00

Total Sources..... \$14,293,293.05

Uses Of Funds

Rounding Amount.....	13,990,513.05
Total Underwriter's Discount (1.600%).....	217,280.00
Costs of Issuance.....	85,500.00

Total Uses..... \$14,293,293.05

\$13,580,000

City of Grain Valley, Missouri
General Obligation Bonds, Series 2022A

Pricing Summary

Maturity	Type of Bond	Coupon	Yield	Maturity Value	Price	YTM	Call Date	Call Price	Dollar Price
03/01/2025	Serial Coupon	4.000%	2.850%	1,040,000.00	102.756%	-	-	-	1,068,662.40
03/01/2026	Serial Coupon	4.000%	3.050%	1,080,000.00	103.131%	-	-	-	1,113,814.80
03/01/2027	Serial Coupon	4.000%	3.250%	1,125,000.00	103.116%	-	-	-	1,160,055.00
03/01/2028	Serial Coupon	4.000%	3.300%	1,495,000.00	103.494%	-	-	-	1,547,235.30
03/01/2029	Serial Coupon	4.000%	3.350%	1,630,000.00	103.768%	-	-	-	1,691,418.40
03/01/2030	Serial Coupon	4.000%	3.450%	1,695,000.00	103.607%	-	-	-	1,756,138.65
03/01/2031	Serial Coupon	4.000%	3.500%	1,765,000.00	103.648%	-	-	-	1,829,387.20
03/01/2032	Serial Coupon	4.000%	3.600%	1,840,000.00	102.906%	c 3.636%	03/01/2031	100.000%	1,898,769.60
03/01/2033	Serial Coupon	4.000%	3.900%	1,910,000.00	100.717%	c 3.916%	03/01/2031	100.000%	1,925,031.70
Total	-	-	-	\$13,580,000.00	-	-	-	-	\$13,990,513.05

Bid Information

Par Amount of Bonds.....	\$13,580,000.00
Reoffering Premium or (Discount).....	410,513.05
Gross Production.....	\$13,990,513.05
Total Underwriter's Discount (1.600%).....	\$(217,280.00)
Bid (101.423%).....	13,773,233.05
Total Purchase Price.....	\$13,773,233.05
Bond Year Dollars.....	\$95,547.72
Average Life.....	7.036 Years
Average Coupon.....	4.000000%
Net Interest Cost (NIC).....	3.7977628%
True Interest Cost (TIC).....	3.7644718%

\$13,580,000

City of Grain Valley, Missouri
General Obligation Bonds, Series 2022A

Net Debt Service Schedule

Date	Principal	Coupon	Interest	Total P+I	Existing D/S	Net New D/S
09/01/2022	-	-	-	-	-	-
09/01/2023	-	-	544,708.89	544,708.89	2,130,725.00	2,675,433.89
09/01/2024	-	-	543,200.00	543,200.00	1,500,725.00	2,043,925.00
09/01/2025	1,040,000.00	4.000%	522,400.00	1,562,400.00	390,400.00	1,952,800.00
09/01/2026	1,080,000.00	4.000%	480,000.00	1,560,000.00	390,900.00	1,950,900.00
09/01/2027	1,125,000.00	4.000%	435,900.00	1,560,900.00	387,800.00	1,948,700.00
09/01/2028	1,495,000.00	4.000%	383,500.00	1,878,500.00	71,050.00	1,949,550.00
09/01/2029	1,630,000.00	4.000%	321,000.00	1,951,000.00	-	1,951,000.00
09/01/2030	1,695,000.00	4.000%	254,500.00	1,949,500.00	-	1,949,500.00
09/01/2031	1,765,000.00	4.000%	185,300.00	1,950,300.00	-	1,950,300.00
09/01/2032	1,840,000.00	4.000%	113,200.00	1,953,200.00	-	1,953,200.00
09/01/2033	1,910,000.00	4.000%	38,200.00	1,948,200.00	-	1,948,200.00
Total	\$13,580,000.00	-	\$3,821,908.89	\$17,401,908.89	\$4,871,600.00	\$22,273,508.89

Ordinances

INTENTIONALLY LEFT BLANK

**CITY OF GRAIN VALLEY
BOARD OF ALDERMEN AGENDA ITEM**

MEETING DATE	07/11/2022	
BILL NUMBER	B22-20	
AGENDA TITLE	AN ORDINANCE AMENDING TRAFFIC CODE SCHEDULE II STOP INTERSECTIONS OF THE CITY OF GRAIN VALLEY MUNICIPAL CODE	
REQUESTING DEPARTMENT	COMMUNITY DEVELOPMENT	
PRESENTER	Mark Trosen, Community Development Director	
FISCAL INFORMATION	Cost as recommended:	N/A
	Budget Line Item:	210-55-73740
	Balance Available	N/A
	New Appropriation Required:	<input type="checkbox"/> Yes <input checked="" type="checkbox"/> No
PURPOSE	To add existing stop sign locations to the Code of Ordinances.	
BACKGROUND	Section 350.010 grants authority to the City Engineer to install traffic control devices. These devices include stop signs.	
SPECIAL NOTES		
ANALYSIS	The stop signs included in this ordinance are for recently completed subdivisions. Developers have paid the cost of the signs as part of their construction permit.	
PUBLIC INFORMATION PROCESS	N/A	
BOARD OR COMMISSION RECOMMENDATION	N/A	
DEPARTMENT RECOMMENDATION	Staff Recommends Approval	
REFERENCE DOCUMENTS ATTACHED	Proposed Ordinance	

**CITY OF
GRAIN VALLEY**

**STATE OF
MISSOURI**

BILL NO. B22-20

ORDINANCE NO. _____
SECOND READING _____
FIRST READING _____

**AN ORDINANCE AMENDING TRAFFIC CODE SCHEDULE II STOP
INTERSECTIONS OF THE CITY OF GRAIN VALLEY MUNICIPAL CODE**

WHEREAS, the City of Grain Valley, Missouri, through its Code of Ordinances has the authority to erect signs giving notice to drivers to stop at intersections before at locations specified within the corporate limits; and

WHEREAS, according to Section 315.010 the City Engineer has authority to install traffic control devices; and

WHEREAS, the Mayor and the Board of Aldermen have reviewed this change and deemed it to be in the best interest of the City.

NOW THEREFORE, BE IT ORDAINED by the Board of Aldermen of the City of Grain Valley, Missouri as follows:

SECTION 1: The Traffic Code Schedule II Stop Intersections of the City of the City of Grain Valley Municipal Code is hereby amended to include the following:

Stop On

At

Aspen Drive NW	Hill Top Lane NW
Aspen Drive NW	High View Drive NW
Chrisman Drive NW	Hill Top Lane NW
Chrisman Drive NW	High View Drive NW
Chrisman Drive NW	Eagle Ridge Drive NW
Chrisman Farms Road	Jefferson Street
E Kansas City Industrial Park Blvd. NW	Chrisman Farms Road
Hickorywood Drive NW	Megan Drive NW
Hickorywood Drive NW	Rymeg Drive NW
High View Drive NW	Whitney Drive NW
Hill Top Lane NW	Whitney Drive NW
Hill Top Court NW	Eagle Ridge Blvd.
Megan Drive NW	Lindenwood Drive NW
Rymeg Drive NW	Lindenwood Drive NW
Rymeg Drive NW	Crestwood Drive NW
Sale Court NE	Greystone Blvd. NE
Sni-A-Bar Blvd.	Sni-A-Bar Pkwy.
Whitney Drive NW	Woodbury Drive NW (4 Way)
Woodbury Drive NW	Whitney Drive NW (4 Way)

Read two times and PASSED by the Board of Aldermen this ___ day of _____, 2022, the aye and nay votes being recorded as follows:

ALDERMAN ARNOLD _____
ALDERMAN CLEAVER _____
ALDERMAN MILLS _____

ALDERMAN BASS _____
ALDERMAN KNOX _____
ALDERMAN SKINNER _____

Mayor _____ (in the event of a tie only)

Approved as to form:

Lauber Municipal Law
City Attorney

Mike Todd
Mayor

ATTEST:

Jamie Logan
City Clerk

INTENTIONALLY LEFT BLANK

**CITY OF GRAIN VALLEY
BOARD OF ALDERMEN AGENDA ITEM**

MEETING DATE	7/11/2022	
BILL NUMBER	B22-21	
AGENDA TITLE	AN ORDINANCE CHANGING THE ZONING ON APPROXIMATELY 7.53 ACRES FROM DISTRICT R-3 PUD (MULTI-FAMILY RESIDENTIAL DISTRICT – PLANNED UNIT DEVELOPMENT) TO DISTRICT R-3P (MULTI-FAMILY RESIDENTIAL DISTRICT – PLANNED OVERLAY DISTRICT) AND APPROVAL OF THE PRELIMINARY DEVELOPMENT PLAN/PLAT FOR THE LOFTS AT CREEKSIDE LANDING	
REQUESTING DEPARTMENT	COMMUNITY DEVELOPMENT DEPARTMENT	
PRESENTER	MARK TROSEN, DIRECTOR	
FISCAL INFORMATION	Cost as recommended:	N/A
	Budget Line Item:	N/A
	Balance Available	N/A
	New Appropriation Required:	<input type="checkbox"/> Yes <input checked="" type="checkbox"/> No
PURPOSE	The proposed development will consist of four (4) apartment buildings containing 24 units in each building; three (3) four-plex buildings and one duplex. The total number of units on the property is 110. The development site is generally located east of NW Sni-A-Bar Parkway where NW Sni-A-Bar Blvd. dead ends to the east.	
BACKGROUND	The Preferred Land Use Map in the City's Comprehensive Plan illustrates this area as multi-family residential. The proposed change in zoning and development plan is consistent with the Comprehensive Plan. The Board of Aldermen approved Ordinance 1870 on December 18,2006 changing the zoning from District A (Agriculture) to R-3 PUD (Multi-Family, Planned Unit Development). The approved PUD plan contained 17 buildings consisting of two, three and four units to a building with a total of 56 units for the total development.	
SPECIAL NOTES	According to Section 400.200 of the City's zoning regulations, a Planned Overlay District shall provide latitude and flexibility in location of buildings, structures, open spaces, play areas, parking, roads, drives, variations in setback and yard requirements.	

ANALYSIS	Please refer to Staff Report
PUBLIC INFORMATION PROCESS	Public Notice was given in the Examiner as required by State Statute and property owners of record within 185 feet of the rezoning area were notified by letter.
BOARD OR COMMISSION RECOMMENDATION	The Planning and Zoning Commission held a public hearing on Wednesday, June 8, 2022. The Commission recommended approval by a vote of 3 to 1 on the rezoning and the preliminary development plan and plat with Staff conditions and continue privacy fence along the east property line adjacent to the Royer property.
DEPARTMENT RECOMMENDATION	Staff Recommends Approval with the condition that a wall or privacy fence at least 6 feet in height is constructed along the north and west property lines in addition to an ornamental screen of trees and shrubs. Also, revisions are needed to the plat, as noted.
REFERENCE DOCUMENTS ATTACHED	Ordinance, Revised Preliminary Development Plan, Revised Preliminary Landscape Plan, Revised Plat, Building Elevations, Application, Staff Report

**CITY OF
GRAIN VALLEY**

**STATE OF
MISSOURI**

BILL NO. B22-21

ORDINANCE NO.
SECOND READING
FIRST READING

AN ORDINANCE CHANGING THE ZONING ON APPROXIMATELY 7.53 ACRES FROM DISTRICT R-3 PUD (MULTI-FAMILY RESIDENTIAL DISTRICT – PLANNED UNIT DEVELOPMENT) TO DISTRICT R-3P (MULTI-FAMILY RESIDENTIAL DISTRICT – PLANNED OVERLAY DISTRICT) AND APPROVAL OF PRELIMINARY DEVELOPMENT PLAN/PLAT FOR THE LOFTS AT CREEKSIDE LANDING

WHEREAS, the Mayor and the Board of Aldermen are committed to the development of the City: and

WHEREAS, a public hearing was held on June 8, 2022 in which the Planning and Zoning Commission recommended approval of the zoning change to District R-3p (Multi-Family Residential District – Planned Overlay District) on approximately 7.53 acres and approval of Preliminary Development Plan and Plat for the Lofts at Creekside Landing; and

WHEREAS, a public hearing concerning said matter was held at the Grain Valley City Hall in Grain Valley, Missouri at or around 7:00 p.m. on July 11, 2022; and

WHEREAS, in reviewing the City’s 2014 Comprehensive Plan, the proposed rezoning and preliminary development plan would be consistent with the character and intent of the long range plan; and

WHEREAS, the Board of Aldermen of the City of Grain Valley, Missouri, has determined that it is desirable.

NOW THEREFORE, BE IT ORDAINED by the Board of Aldermen of the City of Grain Valley, Missouri as follows:

SECTION 1: The zoning for the property generally described below is hereby established as District R-3p (Multi-Family Residential District – Planned Overlay District).

Legal Description:

BEING PART OF THE SOUTHWEST QUARTER OF SECTION 34, TOWNSHIP 49, RANGE 30, JACKSON COUNTY, MISSOURI, DESCRIBED AS FOLLOWS:
COMMENCING AT THE NORTHWEST CORNER OF THE SOUTHWEST QUARTER OF SAID SECTION 34; THENCE SOUTH 01 DEGREE 52 MINUTES 02 SECONDS WEST ALONG THE WEST LINE, 1210.78 FEET; THENCE SOUTH 88 DEGREES 07 MINUTES 58 SECONDS EAST, 21.34 FEET TO THE SOUTHWEST CORNER OF LOT 50, "CREEKSIDE LANDING" 2ND PLAT, A SUBDMSION OF LAND IN SECTION 34, TOWNSHIP 49, RANGE 30, GRAIN VALLEY, JACKSON COUNTY, MISSOURI; THENCE NORTH 82 DEGREES

06 MINUTES 52 SECONDS EAST, 142.60 FEET TO THE SOUTHEAST CORNER OF LOT 50 IN SAID "CREEKSIDO LANDING"; THENCE NORTH 10 DEGREES 27 MINUTES 14 SECONDS WEST ALONG THE EASTERLY LINE OF SAID LOT 50, 14.26 FEET TO THE POINT OF BEGINNING; THENCE CONTINUE ALONG THE EASTERLY LINE OF SAID LOT 50, NORTH 10 DEGREES 27 MINUTES 14 SECONDS WEST, 42.20 FEET; THENCE NORTH 01 DEGREES 52 MINUTES 38 SECONDS EAST ALONG THE EAST LINE OF SAID CREEKSIDO LANDING, 393.73 FEET; THENCE SOUTH 89 DEGREES 13 MINUTES 26 SECONDS EAST ALONG THE SOUTH LINE OF SAID CREEKSIDO LANDING, 788.99 FEET; THENCE SOUTH 00 DEGREES 46 MINUTES 16 SECONDS WEST, 450.16 FEET TO THE NORTHERLY LINE OF A TRACT OF LAND AS RECORDED IN DOCUMENT NO. 2016E0085210 AT JACKSON COUNTY, MISSOURI RECORDER'S OFFICE; THENCE ALONG THE FOLLOWING FOUR COURSES OF SAID DOCUMENT NO. 2016E0085210, COURSE ONE (1): NORTH 45 DEGREES 27 MINUTES 07 SECONDS WEST, 139.32 FEET; COURSE TWO (2): SOUTH 77 DEGREES 41 MINUTES 49 SECONDS WEST, 307.54 FEET TO A POINT OF CURVATURE; COURSE THREE (3): ALONG A CURVE TO THE RIGHT WITH A RADIUS OF 650.00 FEET AND A DISTANCE OF 162.78 FEET; COURSE FOUR (4): NORTH 87 DEGREES 57 MINUTES 16 SECONDS WEST, 226.77 FEET TO THE POINT OF BEGINNING. CONTAINING 7.53 ACRES, MORE OR LESS.

SECTION 2: The Board of Aldermen approves the preliminary development plan and plat for The Lofts at Creekside Landing with recommendation and conditions from the Planning and Zoning Commission.

SECTION 3: This ordinance shall be in full force and effect from and after its passage by the Board of Aldermen and approval by the Mayor.

Read two times and PASSED by the Board of Aldermen this ___ day of _____, 2022, the aye and nay votes being recorded as follows:

ALDERMAN BASS	_____	ALDERMAN CLEAVER	_____
ALDERMAN SKINNER	_____	ALDERMAN KNOX	_____
ALDERMAN ARNOLD	_____	ALDERMAN MILLS	_____

Mayor _____ (in the event of a tie only)

Approved as to form:

 Lauber Municipal Law
 City Attorney

 Mike Todd
 Mayor

ATTEST:

Jamie Logan
City Clerk

INTENTIONALLY LEFT BLANK



711 Main Street
 Grain Valley, MO 64029
 816.847.6220
 816.847.6206 fax
 www.cityofgrainvalley.org

PLANNING & ZONING APPLICATION

PROJECT INFORMATION

Location: NW Sni-A-Bar Parkway and NW Sni-A-Bar Blvd.

Subdivision: _____ **Lot #:** _____ **Zoning District:** _____

Description of Request: Rezoning to R3P and preliminary plat

APPLICANT INFORMATION

Name: Bryan Rahn

Company: Blue Springs Safety Storage South II LLC

Address: 1120 Eagles Ridge Blvd Grain Valley, Mo 64029

Telephone: 816-229-8115 **Fax:** _____ **E-mail:** bryan@countryclub-homes.com

Property Owner: Blue Springs Safety Storage South II LLC

Additional Contact(s): Tony Ward (tony@safetyministorage.com) Luke White (luke@safetyministorage.com)

Type of Application: Check Type & Submit Corresponding Requirements	Submittal Requirement List:	
<input checked="" type="checkbox"/> Rezoning 1 • 2 • 5 • 10 • 11 • 14	1	Legal description of subject property
<input type="checkbox"/> Ordinance Amendment 10	2	Map depicting general location of site
<input type="checkbox"/> Special/Conditional Use Permit 1 • 2 • 10 • 11 • 14	3	Summary Site Analysis depicting current character of site
<input type="checkbox"/> Temporary Use Permit 2 • 10 • 14	4	Preliminary Plat (3 full size copies)
<input checked="" type="checkbox"/> Preliminary Plat 1 • 3 • 4 • 14	5	Preliminary Development/ Site Plan (6 copies)
<input type="checkbox"/> Final Plat/ Lot Split 1 • 6 • 12 • 13 • 14 • 15	6	Final Plat (6 copies)
<input type="checkbox"/> Preliminary Development/Site Plan 1 • 3 • 5 • 8 • 9 • 14	7	Final Development/ Site Plan (6 copies)
<input type="checkbox"/> Final Development/Site plan 1 • 7 • 8 • 9 • 14 • 15	8	Landscaping Plan (6 copies)
<input type="checkbox"/> Site Plan 1 • 7 • 8 • 9 • 12 • 14 • 15	9	Building Elevations (6 copies)
<input type="checkbox"/> Vacation of Right-of-way or Easement 1 • 14 • 16 • 17	10	Written description of the proposal
<input type="checkbox"/> Future Land Use Map (Refer to page 9)	11	List of property owners within 185 feet
Note: Include at least one 8 ½ x 11 copy of all drawings and plans will all applications.	12	Construction plans for all public works improvements (6 copies)
	13	Copies of tax certificates from City and County
	14	Proof of ownership or control of property (deed, contract, lease) or permission from property owner
	15	Off-site easements if necessary
	16	Survey of vacation area
	17	Utility Comment Form - City will provide form

[Note: Applications must be completed in their entirety and all submittal requirements must be submitted at the time the application is submitted. Additional submittals may be requested as provided for in the Grain Valley City Code.]

The applicant hereby agrees that all information is provided as required with this application and the City

Code: _____
 Applicant's Signature _____

4/11/22
 Date _____

Applicant's Signature _____

Date _____

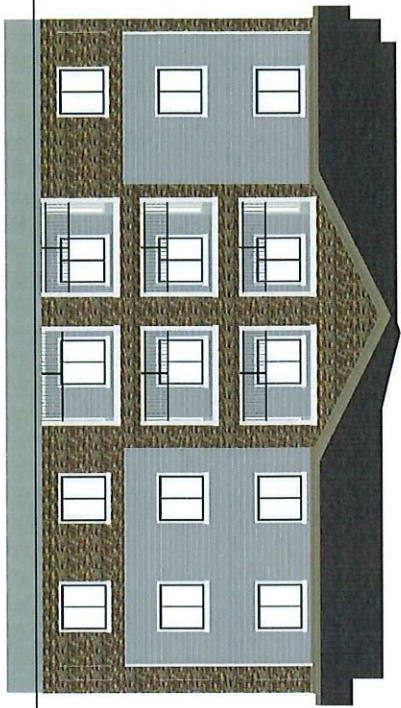
INTENTIONALLY LEFT BLANK



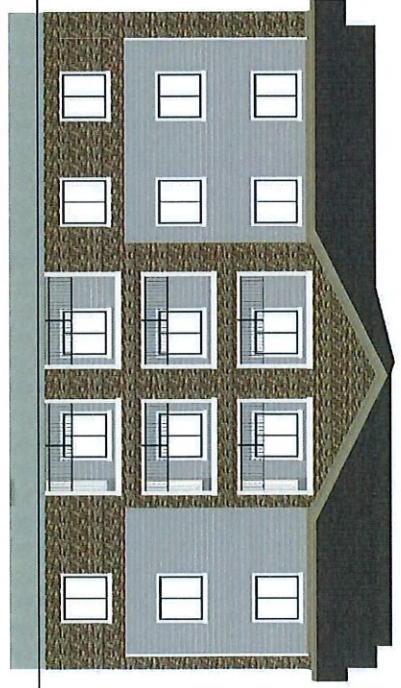
E-1	SHEET:	SCALE:	DATE: 5/20/2022	Ward Development 1120 Eagles Ridge Blvd Grain Valley, Mo 64029	24 UNIT BUILDING ELEVATIONS	CREEKSIDE GRAIN VALLEY, MO	<table border="1" style="font-size: 8px; border-collapse: collapse;"> <thead> <tr> <th colspan="3">REVISION TABLE</th> </tr> <tr> <th>NUMBER</th> <th>DATE</th> <th>DESCRIPTION</th> </tr> </thead> <tbody> <tr><td> </td><td> </td><td> </td></tr> <tr><td> </td><td> </td><td> </td></tr> <tr><td> </td><td> </td><td> </td></tr> <tr><td> </td><td> </td><td> </td></tr> <tr><td> </td><td> </td><td> </td></tr> </tbody> </table>	REVISION TABLE			NUMBER	DATE	DESCRIPTION															
REVISION TABLE																												
NUMBER	DATE	DESCRIPTION																										



BUILDING HEIGHT



ARTIST RENDERING - LEFT



ARTIST RENDERING - RIGHT

REVISION TABLE		
NUMBER	DATE	REVISION DESCRIPTION

CREEKSIDE
GRAIN VALLEY, MO

24 UNIT BUILDING
ELEVATIONS

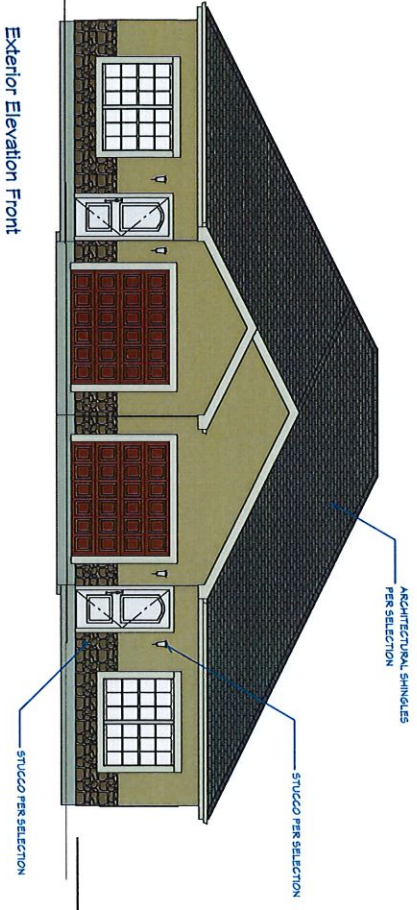
Ward Development
1120 Eagles Ridge Blvd
Grain Valley, Mo 64029

DATE: 5/20/2022
SCALE: 1/8" = 1'-0"
SHEET: E-2



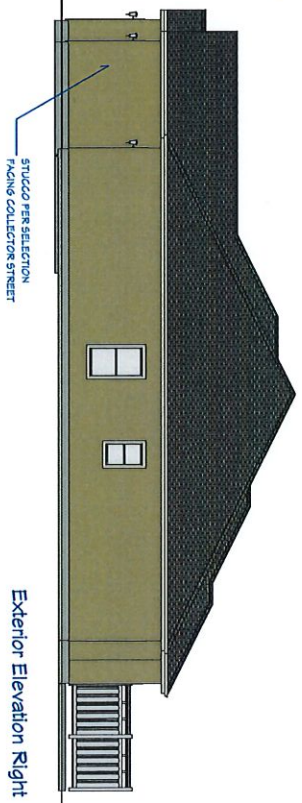
TOWNHOMES

Exterior Elevation Front



VILLA

Exterior Elevation Right



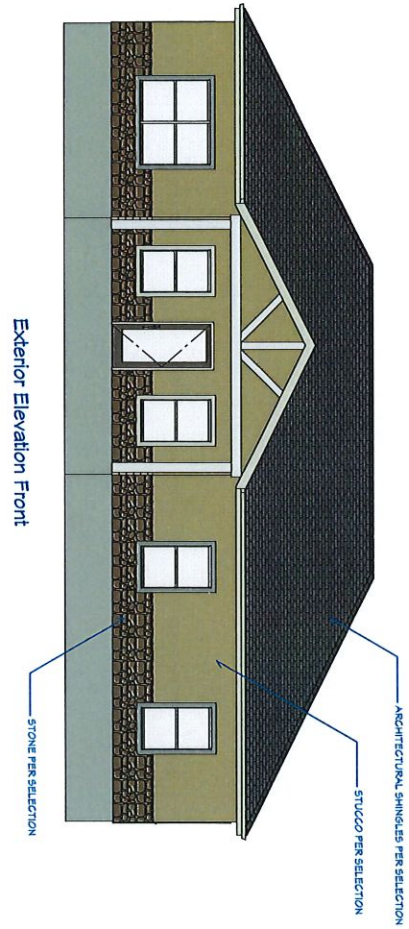
REVISION TABLE		
NUMBER	DATE	DESCRIPTION

CREEKSIDE
GRAIN VALLEY, MO

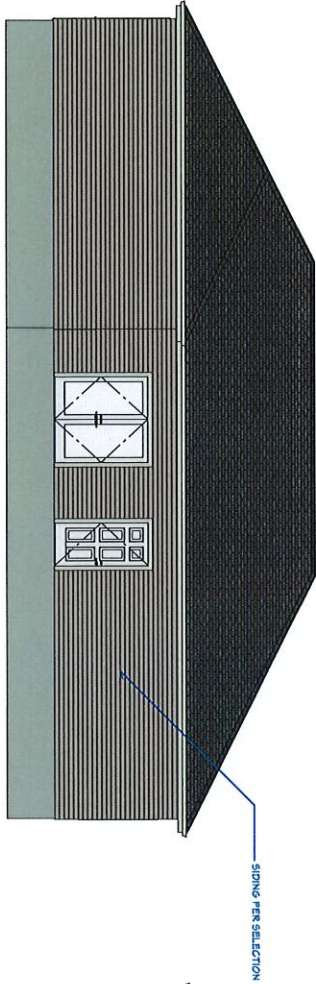
TOWNHOME & VILLA
ELEVATIONS

Ward Development
1120 Eagles Ridge Blvd
Grain Valley, Mo 64029

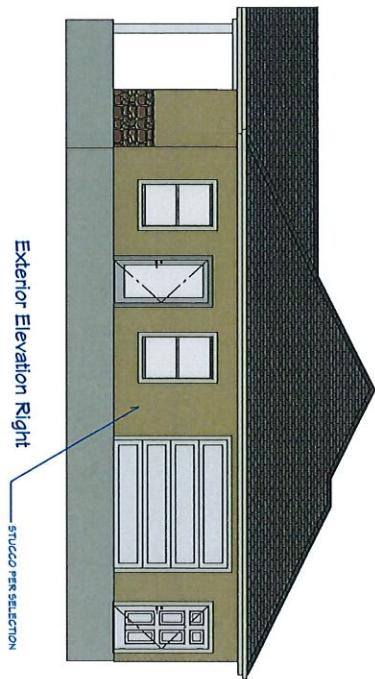
DATE: 5/20/2022
SCALE: A-1
SHEET: A-1



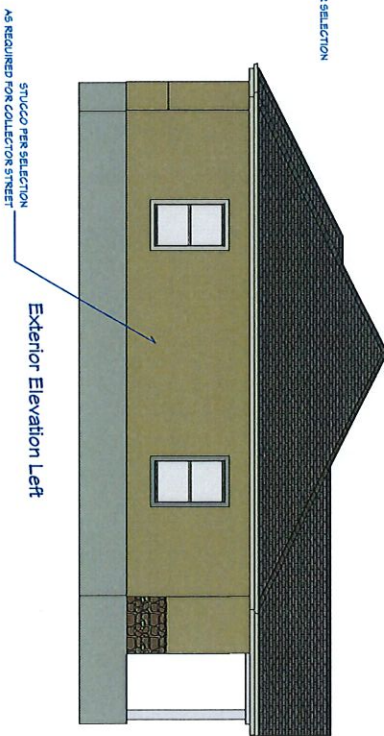
Exterior Elevation Front



Exterior Elevation Back



Exterior Elevation Right



Exterior Elevation Left

REVISION TABLE			
NUMBER	DATE	REVISED BY	DESCRIPTION

CREEKSIDE
GRAIN VALLEY, MO

CLUBHOUSE ELEVATIONS

Ward Development
1120 Eagles Ridge Blvd
Grain Valley, Mo 64029

DATE:
5/20/2022

SCALE:

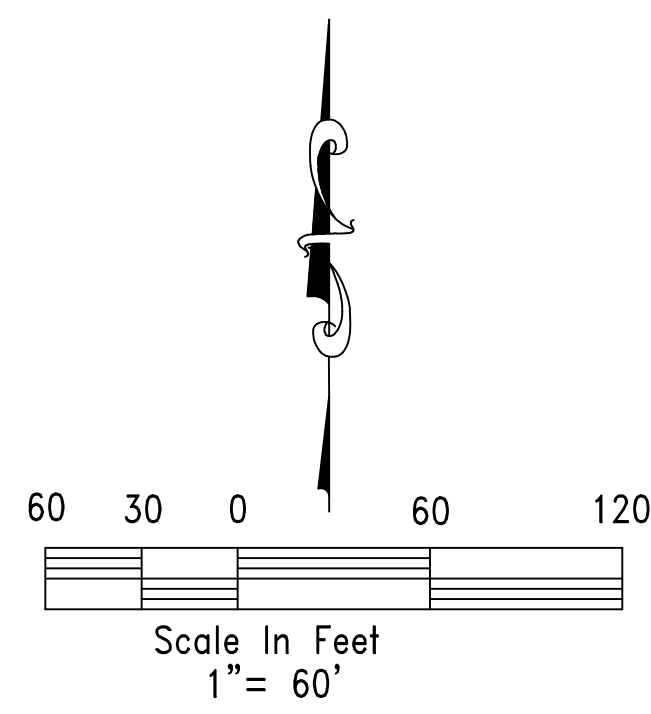
SHEET:

A-2

FINAL PLAT

THE LOFTS AT CREEKSIDE LANDING

PART OF THE SW 1/4 SECTION 34 TOWNSHIP 49 RANGE 30 GRAIN VALLEY, JACKSON COUNTY, MISSOURI



- LEGEND**
- M - MEASURED
 - R - RECORD
 - RAD - RADIUS
 - L - ARC LENGTH
 - U/E - UTILITY EASEMENT
 - L/E - LANDSCAPE EASEMENT
 - D/E - DRAINAGE EASEMENT
 - W/E - WATER EASEMENT
 - S/E - SEWER EASEMENT
 - B/L - BUILDING LINE
 - C/L - CENTERLINE
 - R/W - RIGHT OF WAY
 - ITB - INITIAL TANGENT BEARING

MONUMENT LEGEND

SET 1/2" REBAR AND CAP @ ALL REAR LOT CORNERS RLS-2134, MO. RLS-1069, KS.

CURB NOTCHES ARE ON AN EXTENSION OF THE SIDE LOT LINES.

MONUMENTATION WILL BE COMPLETED WITHIN 6 MONTHS AFTER COMPLETION OF ALL STREETS AND UTILITIES.

- STATE PLANE COORDINATES**
- ① 317304.438 874436.508
 - ② 317305.694 874396.362
 - ③ 317371.188 874398.410
 - ④ 317369.893 874438.963
 - ⑤ 317369.893 874438.963
- 1 METER = 3.28083333'
- KC METRO CONTROL STATION JA-62 WAS USED TO CREATE THE COORDINATES AS SHOWN AND IS BASED ON "MISSOURI COORDINATE SYSTEM OF 1983, WEST ZONE" USING A COMBINED GRID FACTOR OF 0.9999137.

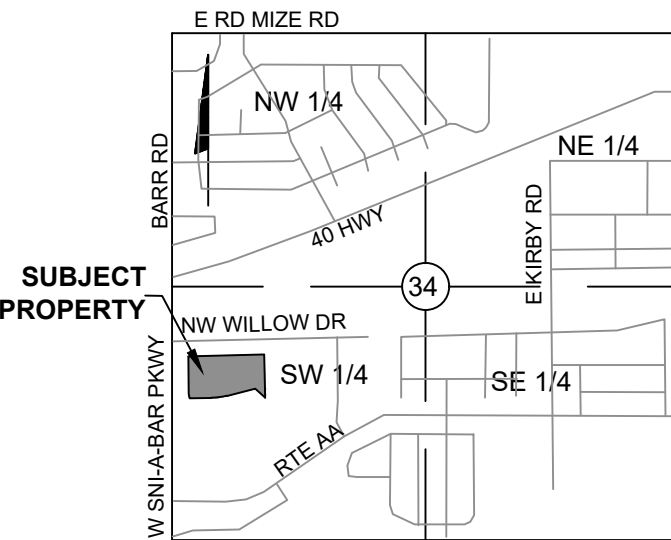
- NOTES:**
1. THE SUBJECT PROPERTY CONTAINS 7.53 ACRES MORE OR LESS.
 2. PARENT TRACT AS RECORDED IN DOCUMENT NO. 2016E0014895.

FLOOD STATEMENT:

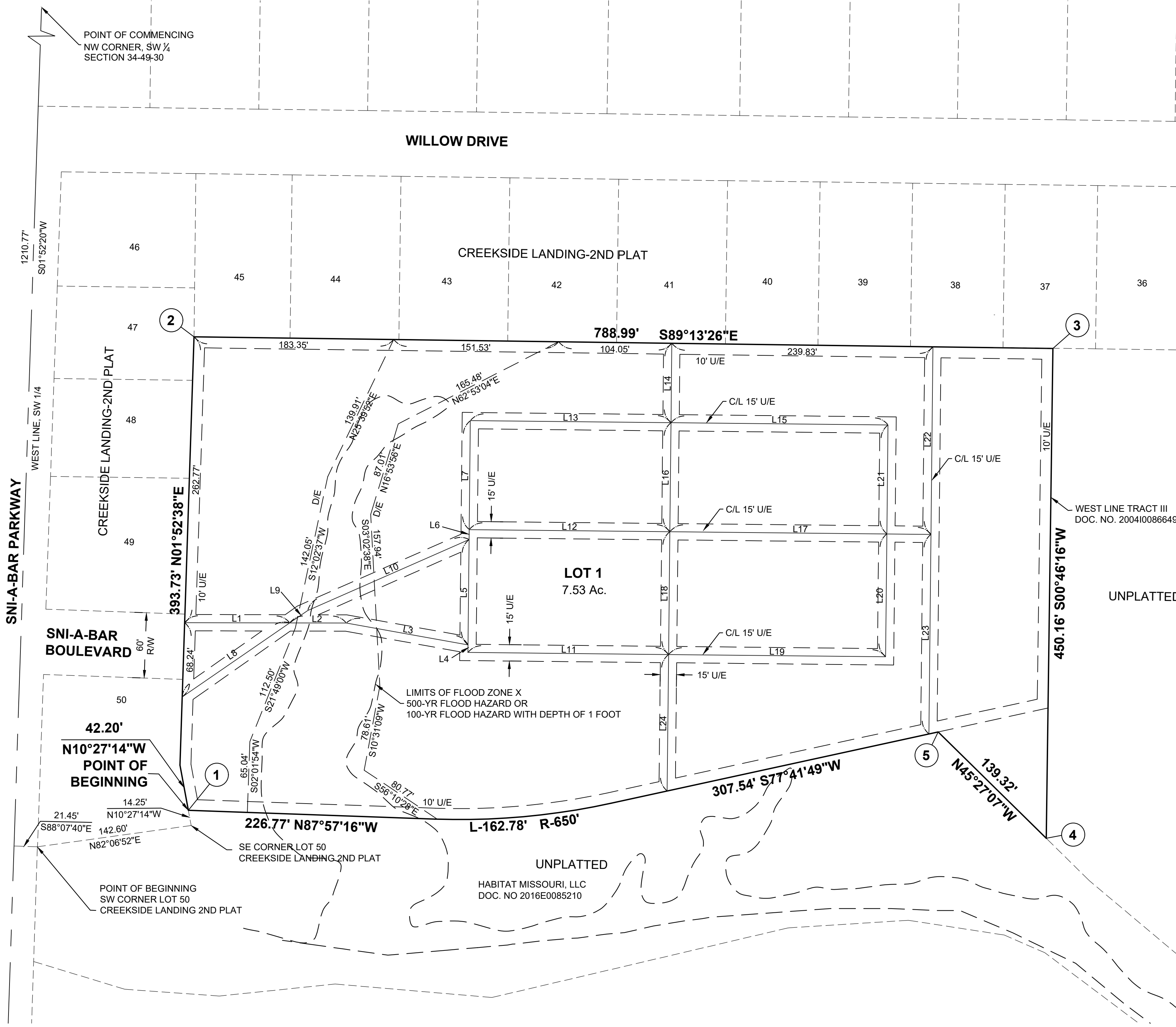
A PART OF THE SUBJECT PROPERTY LIES IN AN AREA LABELED ZONE "AE" (FLOODPLAIN WITH BASE FLOOD ELEVATION) AND IN AREA LABELED ZONE "X" (AREAS OF 0.2% ANNUAL CHANCE FLOOD; AREAS OF 1% ANNUAL CHANCE FLOOD WITH AVERAGE DEPTHS OF LESS THAN 1 FOOT WITH DRAINAGE AREAS LESS THAN 1 SQUARE MILE; AND AREAS PROTECTED BY LEVEES FROM 1% ANNUAL CHANCE FLOOD) AS DETERMINED BY THE FEMA FLOOD INSURANCE RATE MAP NUMBERS 29095C0338G MAP REVISED DATE JANUARY 20, 2017 AND 29095C0339G REVISED DATE JANUARY 20, 2017.

BASIS OF BEARINGS:

BEARINGS SHOWN ARE GRID BEARINGS BASED ON MISSOURI STATE PLANE COORDINATE SYSTEM OF 1983, WEST ZONE.



LOCATION MAP
SCALE=1"=2000'
SECTION 34
TOWNSHIP 49 RANGE 30



LINE	LENGTH	BEARING
L1	96.47	S89°52'28"E
L2	51.87	S89°52'28"E
L3	113.72	S79°49'28"E
L4	8.94	N00°35'53"E
L5	96.76	N00°35'53"E
L6	9.17	N00°35'53"E
L7	100.14	N00°35'53"E
L8	119.86	N55°26'18"E
L9	20.12	N55°26'18"E
L10	161.91	N66°17'00"E
L11	184.33	N89°24'07"W
L12	184.33	S89°24'07"E
L13	184.33	S00°35'53"W
L14	72.99	S00°35'53"W
L15	199.33	S89°24'07"E
L16	100.14	S00°35'53"W
L17	239.83	S89°24'07"E
L18	112.86	S00°35'53"W
L19	199.33	N89°24'07"W
L20	112.86	S00°35'53"W
L21	100.14	S00°35'53"W
L22	172.38	S00°35'53"W
L23	183.38	S00°35'53"W
L24	125.45	S00°35'53"W

I HEREBY CERTIFY THAT THE PLAT OF "THE LOFTS AT CREEKSIDE LANDING" SUBDIVISION IS BASED ON AN ACTUAL SURVEY MADE BY ME OR UNDER MY DIRECT SUPERVISION AND THAT SAID SURVEY MEETS OR EXCEEDS THE CURRENT MINIMUM STANDARDS FOR PROPERTY BOUNDARY SURVEYS AS ESTABLISHED BY THE DEPARTMENT OF NATURAL RESOURCES, DIVISION OF GEOLOGY AND LAND SURVEY OF THE STATE OF MISSOURI, AND MISSOURI STANDARDS FOR PROPERTY BOUNDARY SURVEYS, ESTABLISHED BY THE MISSOURI BOARD FOR ARCHITECTS, PROFESSIONAL ENGINEERS AND LAND SURVEYORS. I FURTHER CERTIFY THAT I HAVE COMPLIED WITH ALL STATUTES, ORDINANCES, AND REGULATIONS GOVERNING THE PRACTICE OF SURVEYING AND PLATTING OF SUBDIVISIONS TO THE BEST OF MY BELIEF.

SURVEYOR: ROGER A. BACKKUES, PLS. MO. NO. 2134

PLAT DEDICATION:
THE UNDERSIGNED PROPRIETORS OF THE ABOVE DESCRIBED TRACT OF LAND HAS CAUSED THE SAME TO BE SUBDIVIDED IN THE MANNER SHOWN ON THE ACCOMPANYING PLAT, WHICH SUBDIVISION SHALL BE HEREAFTER KNOWN AS "THE LOFTS AT CREEKSIDE LANDING".

BUILDING LINES:
BUILDING LINES OR SETBACK LINES WILL BE ESTABLISHED BY THE DEVELOPMENT PLAN AND NO BUILDING OR PORTION THEREOF SHALL BE BUILT BETWEEN THIS LINE AND THE LOT LINE NEAREST THERETO.

EASEMENT DEDICATION:
AN EASEMENT IS HEREBY GRANTED TO THE CITY OF GRAIN VALLEY, MISSOURI, FOR THE PURPOSE OF LOCATING, CONSTRUCTING, OPERATING, AND MAINTAINING FACILITIES FOR WATER, GAS, ELECTRICITY, SEWAGE, TELEPHONE, CABLE TV AND SURFACE DRAINAGE, INCLUDING, BUT NOT LIMITED TO, UNDERGROUND PIPES AND CONDUITS, PAD MOUNTED TRANSFORMERS, SERVICES PEDESTALS, ANY OR ALL OF THEM UPON, OVER, UNDER AND ALONG THE STRIPS OF LAND DESIGNATED UTILITY EASEMENTS (U/E), PROVIDED THAT THE EASEMENT GRANTED HEREIN IS SUBJECT TO ANY AND ALL EXISTING EASEMENTS. ANY UTILITIES LOCATED WITHIN THE DESIGNATED UTILITY EASEMENTS, BY VIRTUE OF THEIR EXISTENCE, DO HEREBY COVENANT, CONSENT, AND AGREE THAT THEY SHALL BE SUBORDINATE TO SAID PUBLIC RIGHT OF WAY IN THE EVENT THAT ADDITIONAL PUBLIC RIGHT OF WAY IS DEDICATED OVER THE LOCATION OF THE UTILITY EASEMENT, WHERE OTHER EASEMENTS ARE DESIGNATED FOR A PARTICULAR PURPOSE, THE USE THEREOF SHALL BE LIMITED TO THAT PURPOSE ONLY. ALL OF THE ABOVE EASEMENTS SHALL BE KEPT FREE FROM ANY AND ALL OBSTRUCTIONS WHICH WOULD INTERFERE WITH THE CONSTRUCTION OR RECONSTRUCTION AND PROPER, SAFE AND CONTINUOUS MAINTENANCE OF THE AFORESAID USES AND SPECIFICALLY THERE SHALL NOT BE BUILT THEREON OR THEREOVER ANY STRUCTURE (EXCEPT DRIVEWAYS, PAVED AREAS, GRASS, SHRUBS AND FENCES) NOR SHALL THERE BE ANY OBSTRUCTION TO INTERFERE WITH THE AGENTS AND EMPLOYEES OF GRAIN VALLEY, MISSOURI, AND ITS FRANCHISED UTILITIES FROM GOING UPON SAID EASEMENT AND AS MUCH OF THE ADJOINING LANDS AS MAY BE REASONABLY NECESSARY IN EXERCISING THE RIGHTS GRANTED BY THE EASEMENT. NO EXCAVATION OF FILL SHALL BE MADE OR OPERATION OF ANY KIND OR NATURE SHALL BE PERFORMED WHICH WILL REDUCE OR INCREASE THE EARTH COVERAGE OVER THE UTILITIES ABOVE STATED OR THE APPURTENANCES THERETO WITHOUT A VALID PERMIT FROM THE DEPARTMENT OF PUBLIC WORKS AS TO UTILITY EASEMENTS.

STREET DEDICATION:
STREETS SHOWN HEREON AND NOT HERETOFORE DEDICATED FOR PUBLIC USE AS STREET RIGHT-OF-WAY ARE HEREBY DEDICATED.

LEGAL DESCRIPTION:
PART OF A TRACT OF LAND DESCRIBED IN BOOK I-2703, AT PAGE 2088 AND IN BOOK I-3082, AT PAGE 981 IN THE OFFICE OF THE RECORDER OF DEEDS IN JACKSON COUNTY, MISSOURI, BEING PART OF THE SOUTHWEST QUARTER OF SECTION 34, TOWNSHIP 49, RANGE 30, JACKSON COUNTY, MISSOURI, DESCRIBED AS FOLLOWS:
COMMENCING AT THE NORTHWEST CORNER OF THE SOUTHWEST QUARTER OF SAID SECTION 34; THENCE ALONG THE WEST LINE OF SAID SOUTHWEST QUARTER, SOUTH 01 DEGREE 52 MINUTES 20 SECONDS WEST ALONG THE WEST LINE, 1210.77 FEET; THENCE SOUTH 88 DEGREES 07 MINUTES 40 SECONDS EAST, 21.45 FEET TO THE SOUTHWEST CORNER OF LOT 50, "CREEKSIDE LANDING" 2ND PLAT, A SUBDIVISION OF LAND IN SECTION 34, TOWNSHIP 49, RANGE 30, GRAIN VALLEY, JACKSON COUNTY, MISSOURI; THENCE NORTH 82 DEGREES 06 MINUTES 52 SECONDS EAST, 142.60 FEET TO THE SOUTHEAST CORNER OF LOT 50 IN SAID "CREEKSIDE LANDING"; THENCE NORTH 10 DEGREES 27 MINUTES 14 SECONDS WEST ALONG THE EASTERLY LINE OF SAID LOT 50, 14.25 FEET TO THE POINT OF BEGINNING; THENCE CONTINUE ALONG THE EASTERLY LINE OF SAID LOT 50, NORTH 10 DEGREES 27 MINUTES 14 SECONDS WEST, 42.20 FEET; THENCE NORTH 01 DEGREES 52 MINUTES 38 SECONDS EAST ALONG THE EAST LINE OF SAID CREEKSIDE LANDING, 393.73 FEET; THENCE SOUTH 89 DEGREES 13 MINUTES 26 SECONDS EAST ALONG THE SOUTH LINE OF SAID CREEKSIDE LANDING, 788.99 FEET; THENCE SOUTH 10 DEGREES 46 MINUTES 16 SECONDS WEST, 450.16 FEET TO THE NORTHERLY LINE OF A TRACT OF LAND AS RECORDED IN DOCUMENT NO. 2016E0085210 AT JACKSON COUNTY, MISSOURI RECORDER'S OFFICE; THENCE ALONG THE FOLLOWING FOUR COURSES OF SAID DOCUMENT NO. 2016E0085210, COURSE ONE (1): NORTH 45 DEGREES 27 MINUTES 07 SECONDS WEST, 139.32 FEET; COURSE TWO (2): SOUTH 77 DEGREES 41 MINUTES 49 SECONDS WEST, 307.54 FEET TO A POINT OF CURVATURE; COURSE THREE (3): ALONG A CURVE TO THE RIGHT WITH A RADIUS OF 650.00 FEET AND A DISTANCE OF 162.78 FEET; COURSE FOUR (4): NORTH 87 DEGREES 57 MINUTES 16 SECONDS WEST, 226.77 FEET TO THE POINT OF BEGINNING, CONTAINING 7.53 ACRES, MORE OR LESS, PREPARED ON MARCH 30, 2022 BY ROGER A. BACKKUES, PLS-2134.

ACKNOWLEDGEMENT:
IN WITNESS WHEREOF, BLUE SPRINGS SAFETY STORAGE SOUTH II, LLC, A MISSOURI LIMITED LIABILITY COMPANY HAS CAUSED THESE PRESENTS TO BE SIGNED BY ITS MEMBER THIS ___ DAY OF ___, 202__.

MEMBER - _____
STATE OF MISSOURI)
COUNTY OF JACKSON)

ON THIS ___ DAY OF ___, 202__, BEFORE ME APPEARED _____, MEMBER OF BLUE SPRINGS SAFETY STORAGE SOUTH II, LLC, A MISSOURI LIMITED LIABILITY COMPANY TO ME KNOWN TO BE THE PERSON DESCRIBED IN AND WHO EXECUTED THE FOREGOING INSTRUMENT; AND ACKNOWLEDGED THAT HE EXECUTED THE SAME AS HIS FREE ACT AND DEED.

IN TESTIMONY WHEREOF, I HAVE HEREUNTO SET MY HAND AND AFFIXED MY OFFICIAL SEAL IN THE COUNTY AND STATE AFORESAID THE DAY AND YEAR FIRST ABOVE WRITTEN.

SEAL _____
NOTARY PUBLIC IN AND FOR SAID COUNTY AND STATE
MY TERM EXPIRES _____

CITY ACKNOWLEDGEMENT:
THIS PLAT IS HEREBY APPROVED IN ACCORDANCE WITH SECTION 405.030B OF THE CITY OF GRAIN VALLEY, MISSOURI SUBDIVISION REGULATIONS.

COMMUNITY DEVELOPMENT DIRECTOR - MARK TROSEN _____ DATE _____

THESE EASEMENTS AND RIGHT OF WAY ACCEPTED BY THE GOVERNING BODY OF GRAIN VALLEY, MISSOURI THIS ___ DAY OF ___, 202__.

MAYOR - MIKE TODD _____ CITY CLERK - JAMIE LOGAN _____

COUNTY APPROVALS:

BY: _____ DATE _____
VINCENT E. BRICE _____
JACKSON COUNTY ASSESSMENT DEPARTMENT

	DATE: JUNE 29, 2022 DEVELOPER BLUE SPRINGS SAFETY STORAGE SOUTH II LLC 1120 NW EAGLE RIDGE BLVD GRAIN VALLEY, MO 64029	THE LOFTS AT CREEKSIDE LANDING GRAIN VALLEY, JACKSON COUNTY, MISSOURI BOUNDARY & CONSTRUCTION SURVEYING, INC. 821 NE COLUMBUS STREET SUITE 100, LEE'S SUMMIT, MO. 64063 PH.# 816/554-9798, FAX # 816/554-0337
	PROJECT NO. 22-204 SHEET 1 OF 1 THE LOFTS AT CREEKSIDE LANDING, GRAIN VALLEY, MO	

INTENTIONALLY LEFT BLANK



**BOA STAFF REPORT
THE LOFTS AT CREEKSIDE LANDING
JULY 11, 2022**

ACTION: Blue Springs Safety Storage South II LLC is requesting a change of zoning on approximately 7.53 acres from District R-3 PUD (Multi-Family Residential – Planned Unit Development) to R-3p (Multi-Family Residential District – Planned Overlay District) and approval of the preliminary development plan/plat for The Lofts at Creekside Landing. The development site is generally located east of NW Sni-A-Bar Parkway where NW Sni-A- Bar Blvd. dead ends to the east.

CITY’S COMPREHENSIVE PLAN: The Preferred Land Use Map in the City’s Comprehensive Plan illustrates this area as multi-family residential.

BACKGROUND: The Board of Aldermen approved Ordinance 1870 on December 18, 2006 changing the zoning from District A (Agriculture) to R-3 PUD (Multi-Family, Planned Unit Development). The proposed PUD contained 17 buildings consisting of two, three and four units to a building with a total of 56 units for the total development. The buildings would have access on a proposed looped public street that would intersect with NW Sni-A-Bar Parkway.

PURPOSE: The applicant has filed an application that maintains the underlying zoning of R-3 (Multi-Family Residential) but proposes an overlay zoning to a District “P”. A Planned Overlay District shall be for the purpose of permitting and regulating the zoning districts in the zoning regulations such as District R-3 (Multi-Family Residential) but provide latitude and flexibility in location of buildings, structures, open spaces, parking, roads, drives, and variations in setbacks and yard requirements. The Planning and Zoning Commission shall consider each plan and make its recommendation to the Board of Aldermen, which shall then decide as to approval or disapproval of the plan.

ANALYSIS: The following are observations regarding the preliminary development plan for the Lofts at Creekside Landing:

- 1) There are four buildings that will contain 24 units in each building, three 4-plexes and one duplex for a total of 110 units. The total land area is 7.53 acres. This yields 14.6 units per acre. The City zoning regulations allows up to 19.6 units per acre for R-3.
- 2) The development proposes a community building, swimming pool, playground, and pickle ball courts. There is also a courtyard in the center of the four three-story building. There are proposed sidewalks within the development for residents to access these amenities. There is approximately 51% of the site that will be pervious or green space.

PAGE 2

STAFF REPORT, THE LOFTS AT CREEKSIDE LANDING

- 3) The City regulations require that 220 parking spaces be provided for the number of units proposed. With the garages, the proposed development plan illustrates 255 spaces. There are 8 spaces that will be designated as ADA around the three-story buildings. There are also two designated ADA spaces at the community building.
- 4) There is no longer a proposed looped public street to serve the buildings. The interior parking lot will be private and maintained by the property owner.
- 5) The minimum landscaping requirements for multi-family developments are one (1) tree and two (2) shrubs per 7,500 square feet of total lot area. Based on this calculation, the code requirement would be 44 trees and 88 shrubs. The preliminary development plan illustrates 44 trees and 89 shrubs. The plan also proposes the required parking lot landscaping of 11 trees.
- 6) In District P, the development shall be screened from abutting or adjoining properties zoned for residential use by a wall or fence at least six (6) feet in height. The area adjacent to such wall or fence shall be planted with trees and shrubs to form an ornamental screen and trees and shrubs shall be maintained by the developer. The property to the north and west is zoned District R-2 (Duplex Residential). **The preliminary landscaping plan will need to be amended to show the type of fence or wall and ornamental screening along the north and west property lines.**
- 7) The applicant has submitted the building elevations showing the general style, size and exterior construction materials of the buildings proposed. The proposed height of the three-story building is approximately 40 feet. In District R-3, the maximum height allowed is 45 feet. The exterior building materials are stucco, stone, and siding. These materials are acceptable exterior building materials per city regulations.
- 8) In reviewing the plat, the following revisions are needed:
 - The distance from the point of commencing to the second course don't match between the drawing and description.
 - Where the west line is referenced in the first course should state "along the west line of said SW ¼".
 - The drawing needs to show the bearing and distance for the south line of Lot 50.
 - In the City Acknowledgements, the Mayor is now Mike Todd.

STAFF RECOMMENDATION: After the preliminary development plan and plat is revised to reflect the comments in items 6 and 8 above, Staff would then recommend approval.

PLANNING AND ZONING COMMISSION: The Commission held a public hearing on June 8, 2022. Frances Royer addressed the Commission. Mr. Royer owns the property to the east.



PAGE 3

STAFF REPORT, THE LOFTS AT CREEKSIDE LANDING

Mr. Royer sold this property to the developer. Mr. Royer asked where the fence and screening is proposed. Mr. Royer asked if a barrier could be installed between his property and this development. He requested that the same privacy fence that is installed along the north property line be installed along the east property line.

The Commission by a vote of 3 to 1 recommends approval to the Board of Aldermen with the staff recommendations and with the condition to continue the same privacy fence along the east property line adjacent to the Royer property.

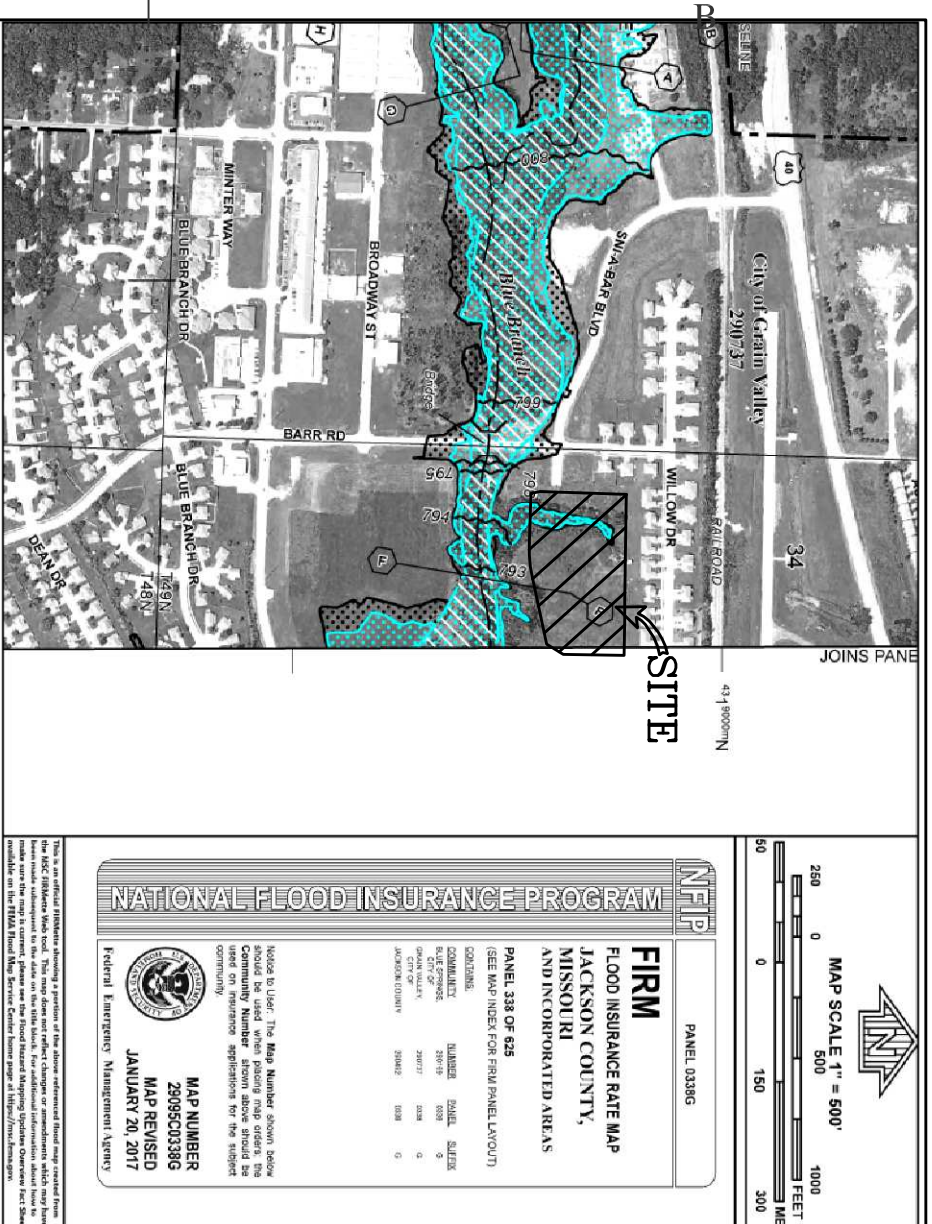
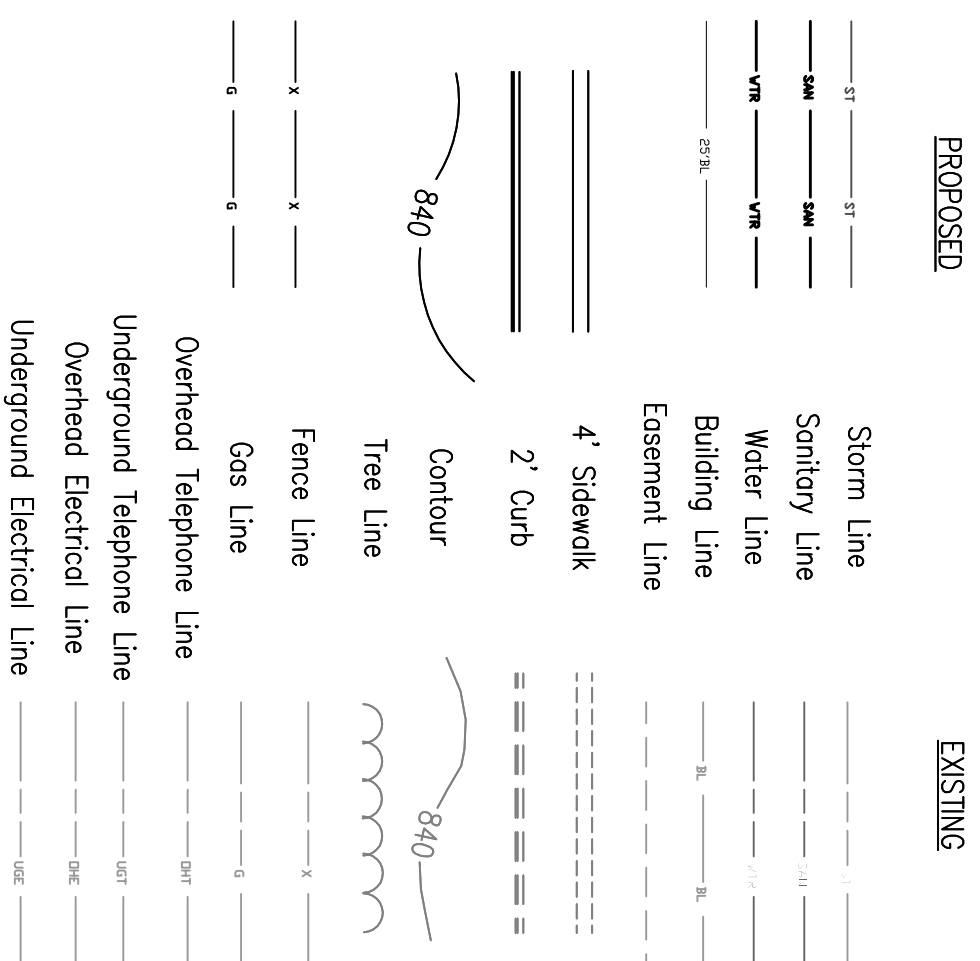
The applicant has revised the preliminary development plan, preliminary landscaping plan and the plat to include the recommendations above. These plans and plat were included in the BOA July 11th meeting packet.

INTENTIONALLY LEFT BLANK

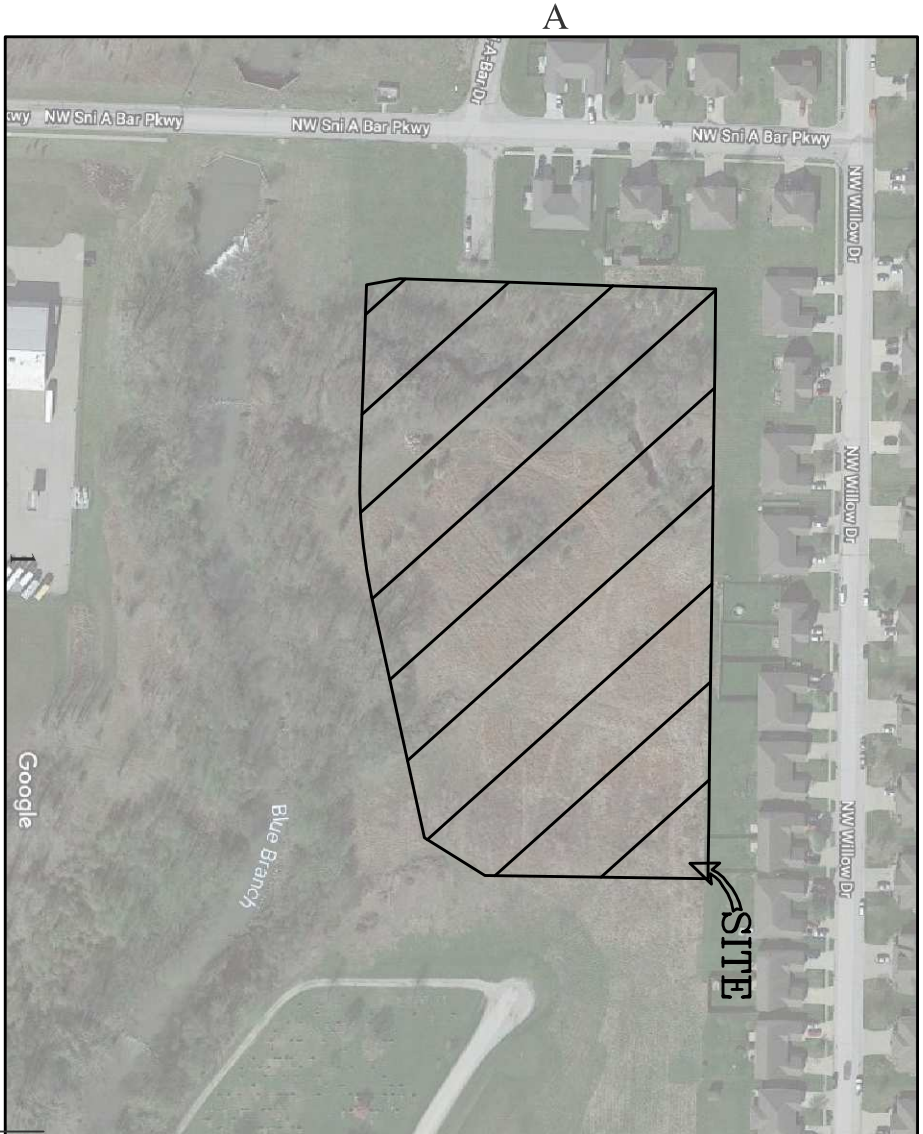
SYMBOL LEGEND

PROPOSED	EXISTING
MM • Manhole	MM-O Manhole
CI • Curb Inlet	CI-O Curb Inlet
JB • Junction Box	JB-O Junction Box
FI • Field Inlet	FI-O Field Inlet
FES-A Fenced End Section	FES-O Fenced End Section
FH • Fire Hydrant	OH • Overhead Telephone Line
BO • Blow Off	OW • Underwater Telephone Line
WO • Water Valve	EW • Underwater Electrical Line
WM • Water Meter	
SM • Straddle	
UP • Utility Pole	
GW • Guy Wire	
	ET • Electric Transformer
	T • Telephone Pedestal
	CP • Cable Pedestal
	CO • Clean Out

LINE LEGEND



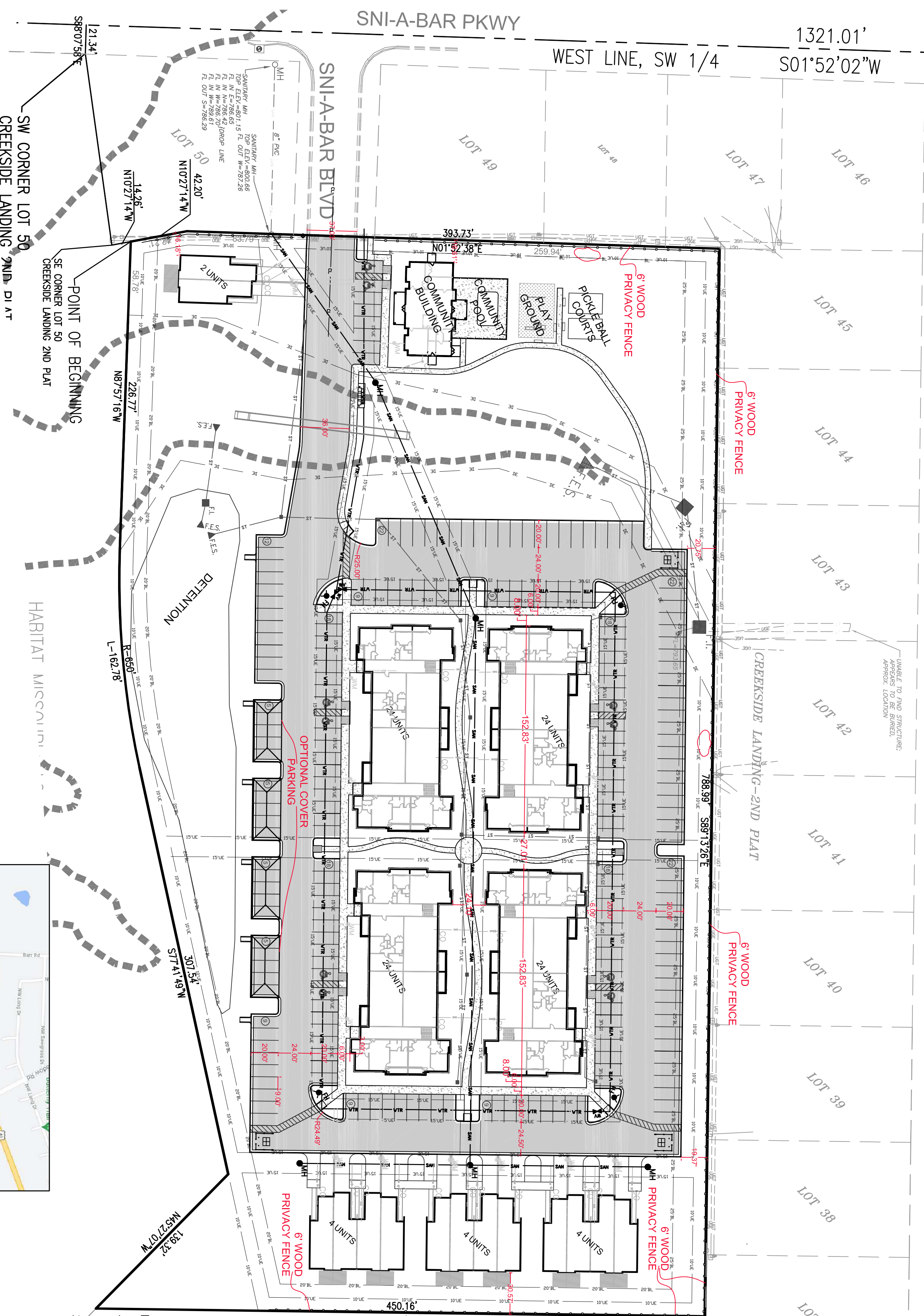
FIRM
 FLOOD INSURANCE RATE MAP
 NATIONAL FLOOD INSURANCE PROGRAM
 1:25,000
 MAINTENANCE PERFORMED
 MAY 2022
 FIRM NUMBER: 5500385030



POINT OF COMMENCING
 NW CORNER, SW 1/4
 SECTION 34-49-30

**PRELIMINARY DEVELOPMENT PLAN FOR
 THE LOFTS AT CREEKSIDe LANDING
 GRAIN VALLEY, JACKSON COUNTY, MISSOURI**

WILLOW DRIVE



PREVIOUS VS IMPERVIOUS CALCULATIONS

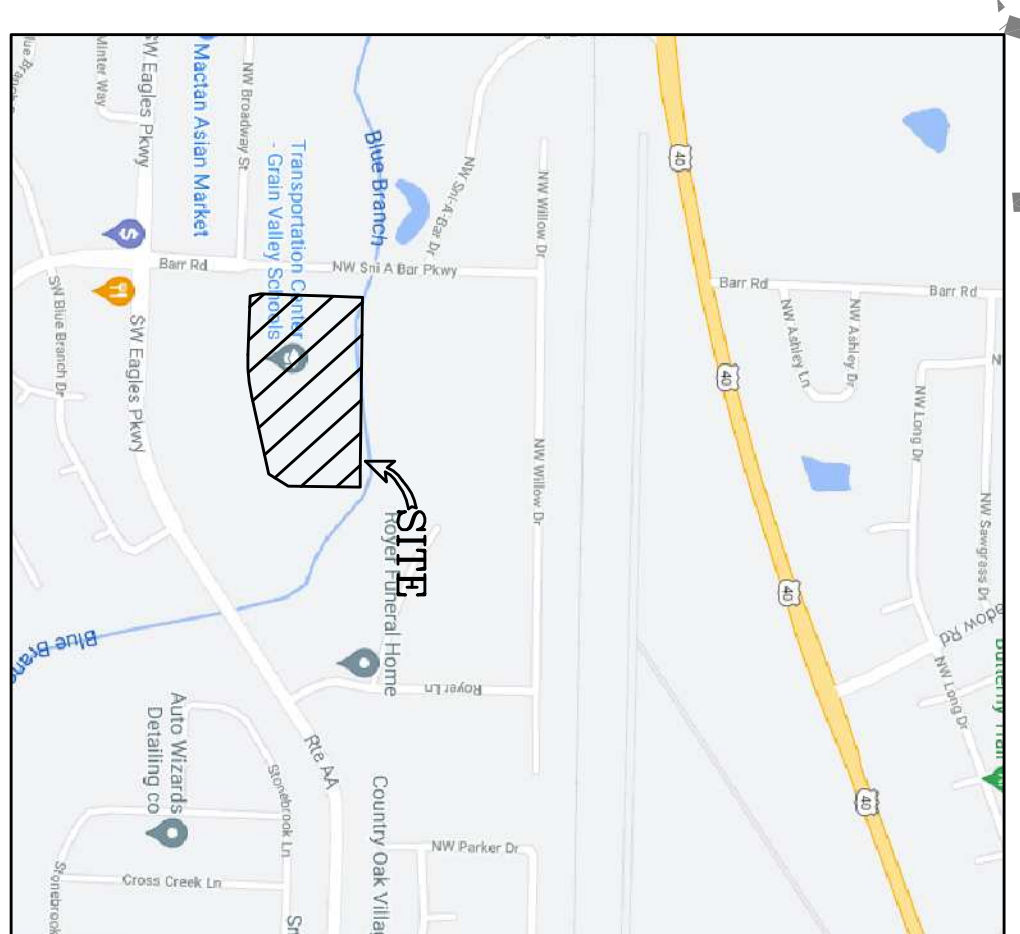
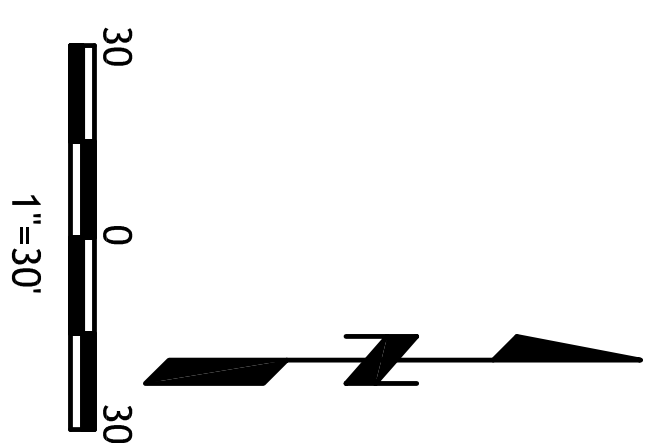
LOT SIZE	328,221 SF
IMPERVIOUS SURFACES	61,909 SF
BUILDINGS, PORCHES, DRIVES, ROADS AND PARKING, WALKWAYS, WALKWAYS	64,197 SF
TOTAL CALCULATIONS	162,044 SF
-/- = 49% IMPERVIOUS	
51% PERVIOUS (GREEN)	

PLANNING NOTES:

- TOTAL LAND AREA = 7.53 ac = 328,221 sf
- TOTAL UNITS = 110 UNITS
- PROPOSED 24-PLEX = 4 - UNITS = 96 UNITS
- PROPOSED 4-PLEX = 3 - UNITS = 12 UNITS
- TOTAL UNITS PER ACRE = 14.6 UNITS PER ACRE
- TOTAL OPEN SPACE / COMMON AREA = 51%
- 1ST FLOOR RATIO
- 24-PLEX = 7,911 sf X 4 = 31,644 sf
- 4-PLEX = 3,508 sf X 4 = 14,032 sf
- 2-PLEX = 1,708 sf = 2,448 sf
- COMMUNITY BUILDING = 2,448 sf
- TOTAL = 49,832 sf
- TOTAL RATIO = 49,832 / 328,221 = 0.15 < 0.4
- MIN. SEPARATION BETWEEN BUILDINGS = 20'
- PARKING REQUIREMENTS
- CITY CODE
- 24-PLEX
- 2 STALLS PER 2-BEDROOM UNITS = 96 X 2 = 192
- REGULAR STALLS = 207
- ADA STALLS = 8
- TOTAL STALLS = 215
- 4-PLEX
- 2 STALLS PER 2-BEDROOM UNITS = 12 X 2 = 24
- PROPOSED PARKING
- TOTAL STALLS INCLUDING GARAGE = 96
- 2-PLEX
- 2 STALLS PER 2-BEDROOM UNITS = 2 X 2 = 4 STALLS
- PROPOSED PARKING
- TOTAL STALLS INCLUDING GARAGE = 4

NOTE:

- DETENTION / BMP AREAS ALONG WITH OPEN SPACE WILL BE MAINTAINED BY THE HOA PER CITY REQUIREMENTS.
- WE HAVE PROVIDED DETENTION / BMP AREA FOR ALL DRAINAGE OUTFALLS OF THIS SITE. DETAILED STUDIES WILL BE SUBMITTED AND APPROVED DURING THE CONSTRUCTION DOCUMENT STAGE OF DEVELOPMENT.



PRELIMINARY DEVELOPMENT PLAN

Quist Engineering, Inc
 Civil Engineering for Residential & Commercial Site Development
 821 NE Columbus St.
 Lee's Summit, Missouri 64063
 Phone: (816) 550-5675
 email: rwa@quistengineering.com

**THE LOFTS AT CREEKSIDe LANDING
 GRAIN VALLEY, JACKSON COUNTY, MISSOURI**

COPYRIGHT © 2022
 1ST ISSUE: 1-23-22

REVISIONS
4-21-22
5-23-22
6-30-22

SHEET NO. **C200**

JOB NO. E22-321

INTENTIONALLY LEFT BLANK

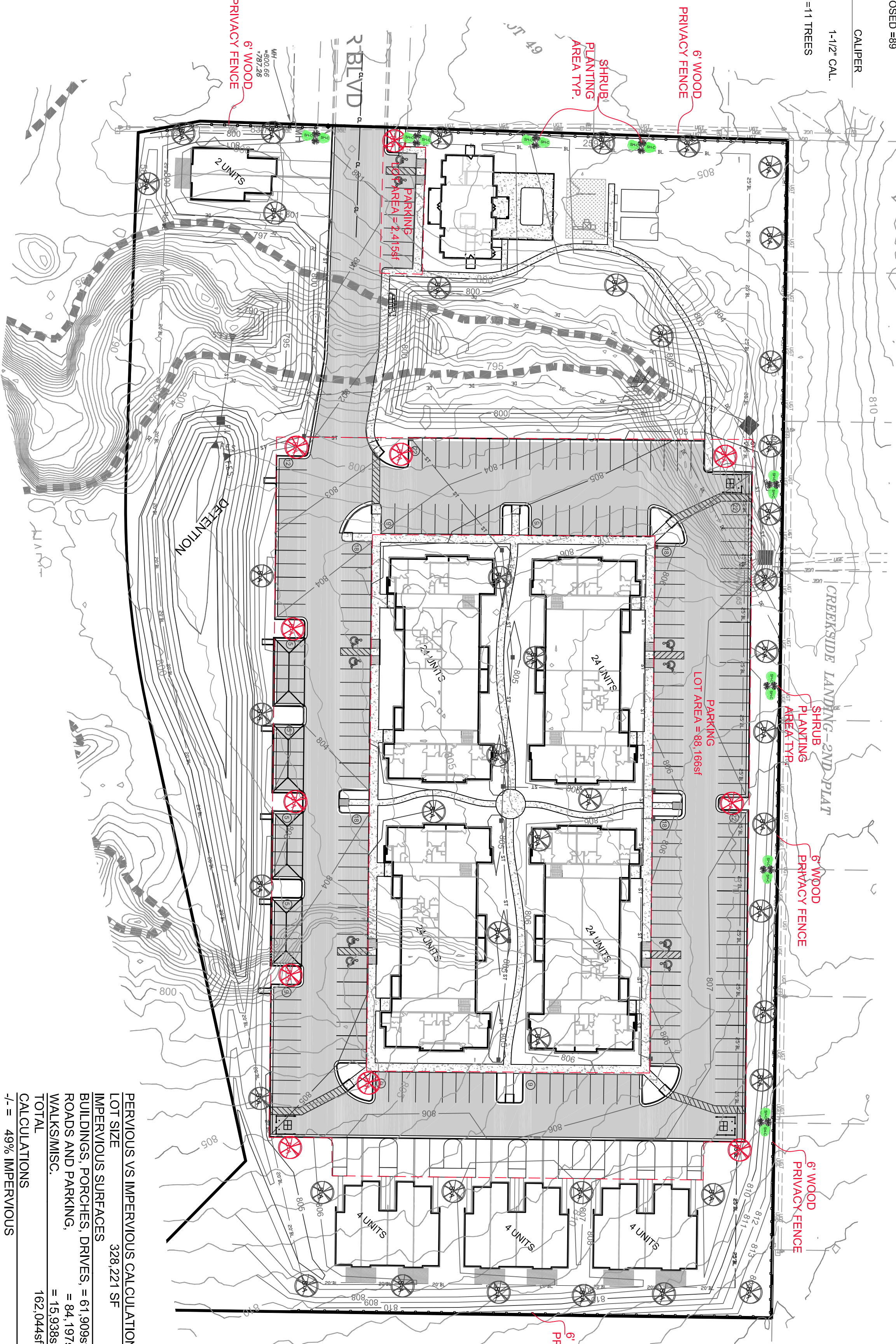
PRELIMINARY LANDSCAPING PLAN FOR THE LOFTS AT CREEKSIDE LANDING GRAIN VALLEY, JACKSON COUNTY, MISSOURI

SYMBOL LEGEND	
PROPOSED	EXISTING
MH ● Manhole	MH ○ Manhole
CI □ Curb Inlet	CI □ Curb Inlet
JB ■ Junction Box	JB □ Junction Box
FI ■ Field Inlet	FI □ Field Inlet
FES ▲ Flood End Section	FES A Flood End Section
FH ● Fire Hydrant	○ Fire Hydrant
BO ● Blow Off	○ Blow Off
WO ● Water Valve	○ Water Valve
WM ● Water Meter	○ Water Meter
WO ● Straddle	○ Straddle
WO ● Utility Pole	○ Utility Pole
WO ● Guy Wire	○ Guy Wire
Electric Transformer	○ Electric Transformer
Telephone Pedestal	○ Telephone Pedestal
Cable Pedestal	○ Cable Pedestal
Clean Out	○ Clean Out

OPEN SPACE PLANTING SCHEDULE	
SA 44 STATE STREET MAPLE	ACER MIYABE TOTAL PROPOSED = 44 TREES
SHA 89 SCARLET STORM QUINCE	CHEAMOMELLES SPECIOSA TOTAL PROPOSED = 89
SHA 11 STATE STREET MAPLE	CALIPER TOTAL PROPOSED = 11 TREES

SCREENING PLANTING SCHEDULE	
SHB 16 SEA GREEN JUNIPER	
SHC 16 ADAGIO MANDEN GRASS	
SHD 16 ADAGIO MANDEN GRASS	

LINE LEGEND	
PROPOSED	EXISTING
Storm Line	Storm Line
Sanitary Line	Sanitary Line
Water Line	Water Line
Building Line	Building Line
Easement Line	Easement Line
4" Sidewalk	4" Sidewalk
2' Curb	2' Curb
Contour	Contour
Tree Line	Tree Line
Fence Line	Fence Line
Gas Line	Gas Line
Overhead Telephone Line	Overhead Telephone Line
Underground Telephone Line	Underground Telephone Line
Overhead Electrical Line	Overhead Electrical Line
Underground Electrical Line	Underground Electrical Line

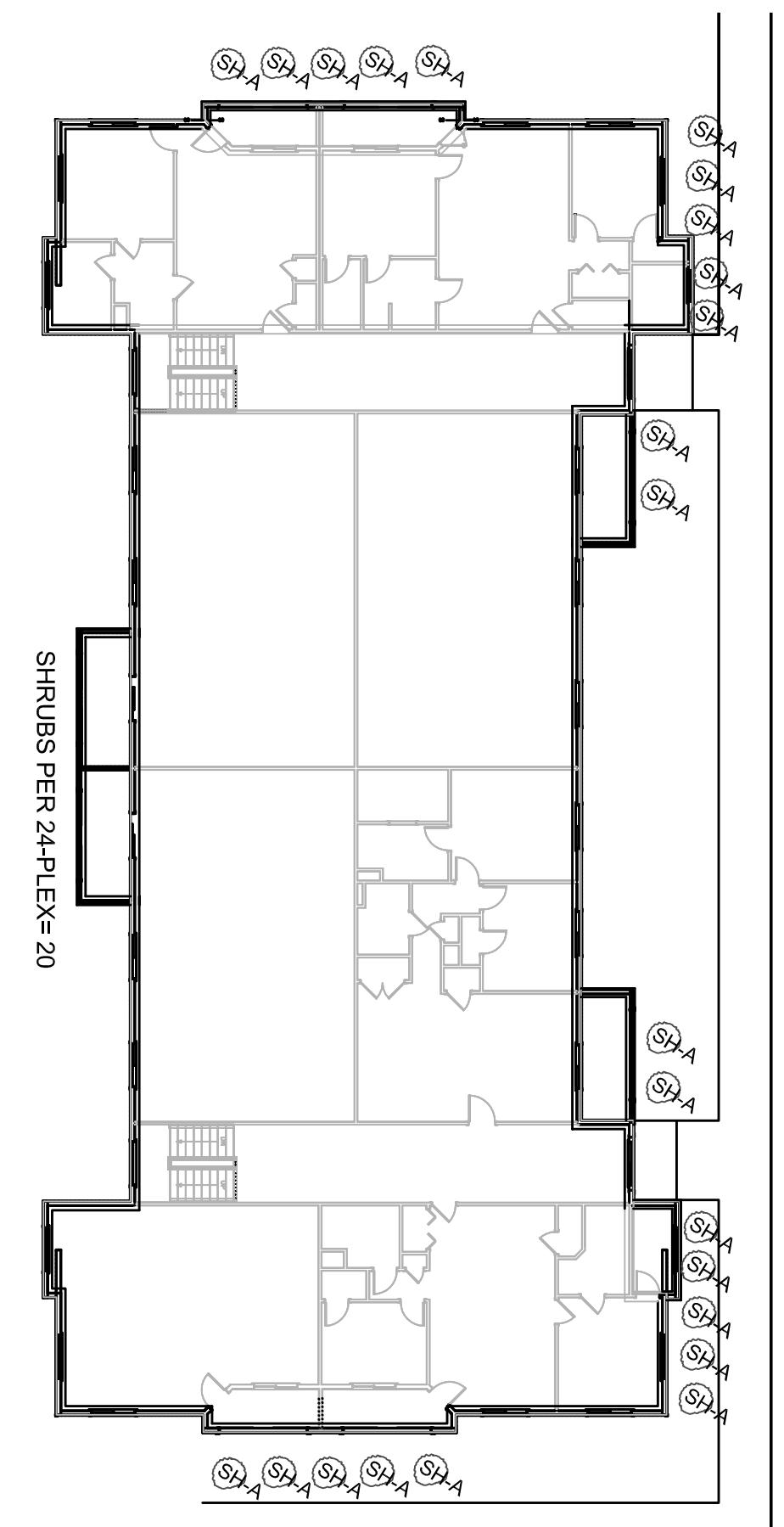
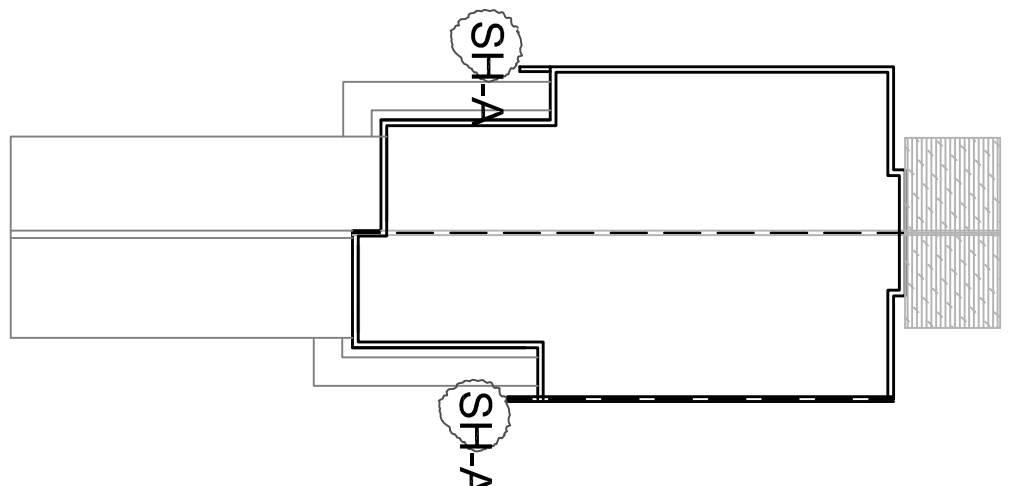
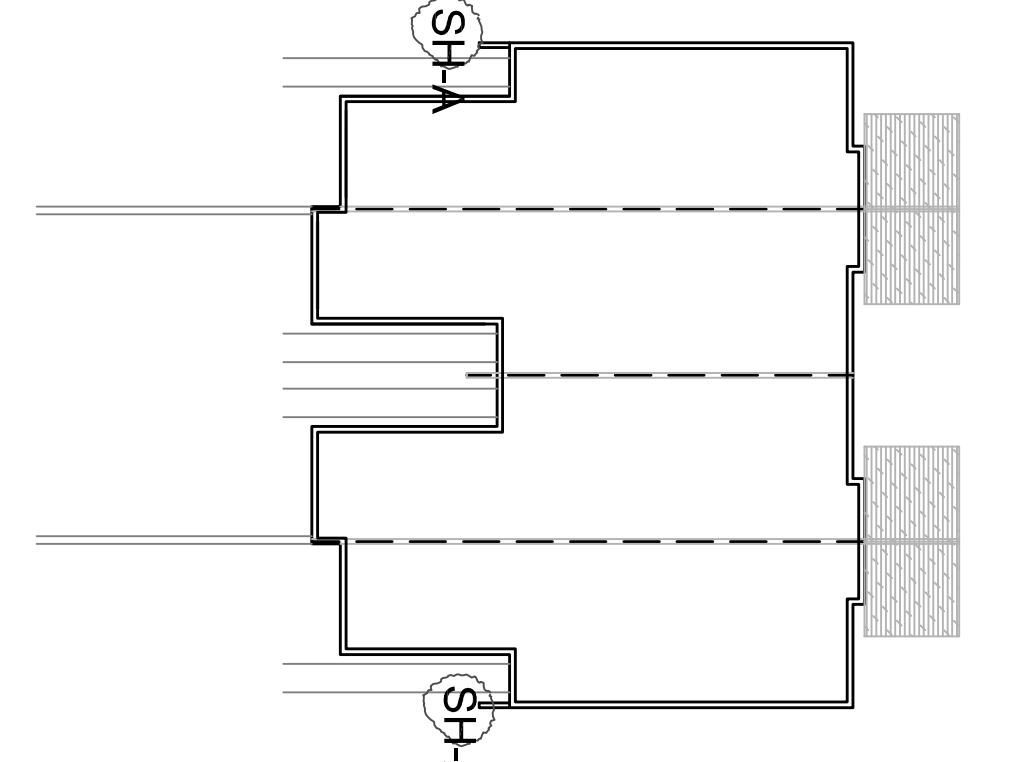
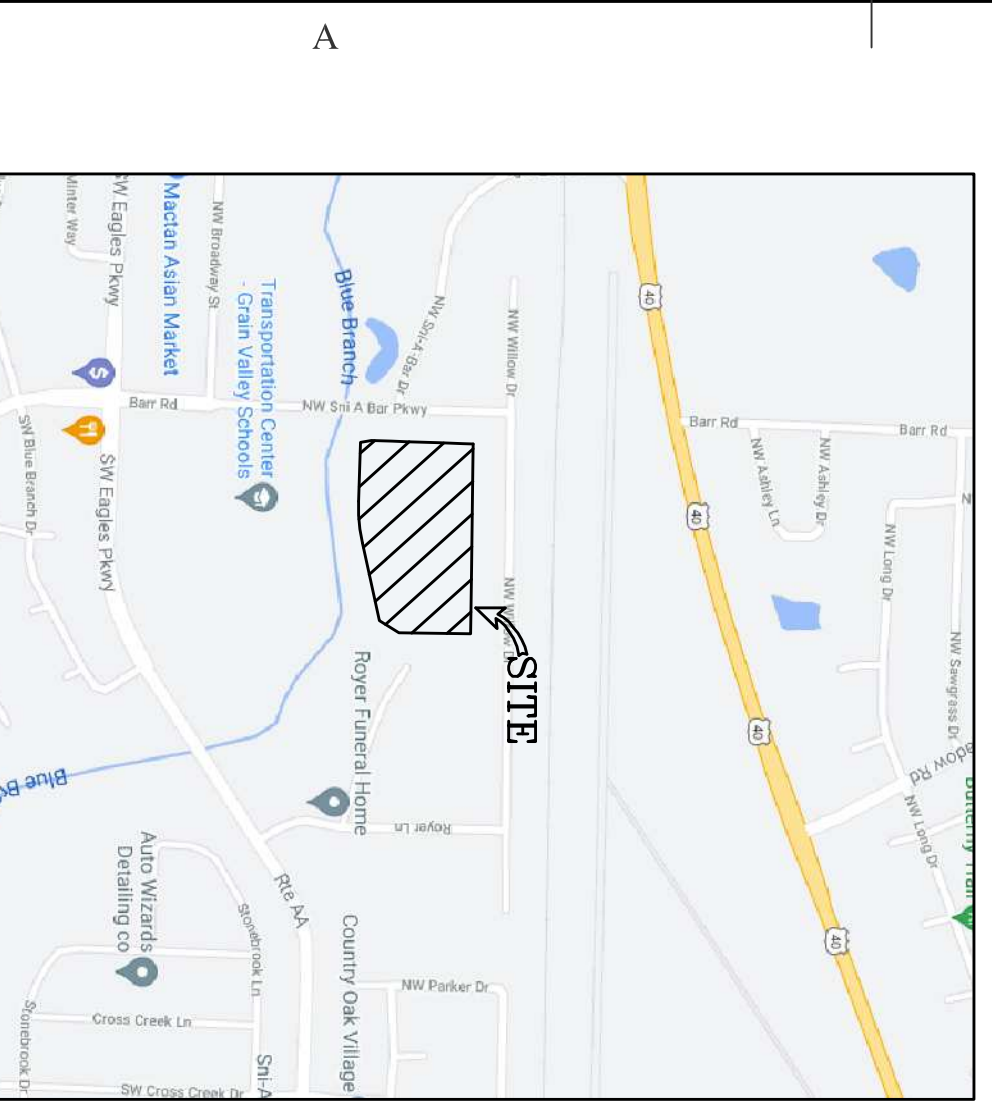
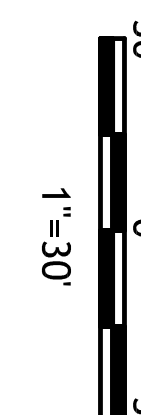


PERVIOUS VS IMPERVIOUS CALCULATIONS

PERVIOUS SURFACES	328,221 SF
IMPERVIOUS SURFACES	61,909sf
BUILDINGS, PORCHES, DRIVERS, ROADS AND PARKING, WALKSMISC.	= 84,197sf
TOTAL	= 15,938sf
TOTAL CALCULATIONS	162,044sf

4% = 49% IMPERVIOUS
5% PERVIOUS (GREEN)

- LANDSCAPING**
- TOTAL OPEN SPACE LANDSCAPING REQUIREMENTS:
TREES REQUIRED = 328,221/ 7,500 = 44
SHRUBS REQUIRED = (328,221/ 7,500) X 2 = 88
(SEE CITY CODE FOR CALIPER OF TREE AND HEIGHT OF SHRUB)
TREES PROPOSED = 44
SHRUBS PROPOSED = 89
 - TOTAL PARKING REQUIREMENTS
TOTAL PARKING LOT AREA = 81,894sf
REQUIRED INTERIOR LS REQUIRED AREA = 2 1/2 PERCENT OF TOTAL PARKING LOT AREA = 90,381 (0.029) = 2,264sf
REQUIRED PARKING LOT TREES = 1 TREE PER 200sf OF REQUIRED AREA = 2,264 / 200 = 11 TREES
PROPOSED PARKING LOT TREES = 11



PRELIMINARY LANDSCAPING PLAN

PROJECT CONTACTS: ROBERT WALQUIST, P.E.
821 NE COLUMBUS ST.
LEE'S SUMMIT, MO 64063
PHONE: (816) 550-5675

Quist Engineering, Inc
Civil Engineering for Residential & Commercial Site Development

821 NE Columbus St.
Lee's Summit, Missouri 64063
Phone: (816) 550-5675
email: rwalquist@quistengineering.com

THE LOFTS AT CREEKSIDE LANDING

GRAIN VALLEY, JACKSON COUNTY, MISSOURI

COPYRIGHT © 2022

1ST ISSUE: 1-23-22

REVISIONS:

- 2-7-22
- 4-26-22
- 5-23-22
- 6-30-22

SHEET NO. **C200**

JOB NO. E22-321

INTENTIONALLY LEFT BLANK

Staff
Reports

INTENTIONALLY LEFT BLANK



Community Development
Mark Trosen, Director

Board of Aldermen Report
July 11, 2022

(For the Month of June; 2022 YTD)

Permits Issued – 59; YTD 360

NSFR – 5; YTD 37
Duplex – 0; 0
Commercial New – 1; YTD 5
Commercial Other – 1; YTD 7
Residential Other – 23; YTD 99
Fence – 11; YTD 66
Roof -18; YTD 76
Pools – 0; YTD 0
Irrigation – 0; YTD 5
Right-of-Way – 0; YTD 38
Construction – 0; YTD 2
Signs – 0; YTD 17
Planning/Zoning – 0; YTD 8

Codes Enforcement & Inspections – 430; YTD 2,258

Total Building Inspections – 172; YTD 1,008
 Residential – 160; YTD 874
 Commercial – 9; YTD 72
 Misc. Stops- 3; YTD 62
Code Violation Inspections – 193; YTD 1,025
 New – 137; YTD 700
 Closed- 56; YTD 325
Utility Inspections – 65; YTD 225
 Sewer – 15; YTD 51
 Water – 10; YTD 25
 Sidewalks – 6; YTD 24
 Driveways – 10; YTD 38
 Right-of-Way – 0; YTD 0
 Final Grade – 6; YTD 15
 PW Finals – 18; YTD 72

Public Works

Work Orders Completed – 119; YTD 521
Utility Locate Requests – 501; YTD 2,564
Water Main Taps – 14; YTD 35
Water Meters –
 New Construction Install – 14; YTD 51
 Repairs – 46; YTD 84
 Replacement – 0; YTD 0
 Replacement Program – 0; YTD 0

Additional Items – Annual Spring Clean-up was on June 4th – Approximately 183 cars went through, picked up trash at 45 senior residences on Thursday and Friday before event.

Annual Public Works Event was held on Thursday, June 23rd in Armstrong Park. There were approximately 175 people attended. 56 pizzas were served. PW Staff demonstrated heavy machinery equipment and kids were allowed to climb up into Public Works vehicles.

Repaired the water service line at 506 Hillside Drive and the Sand Drags.

Superior Bowen has completed the annual pavement overlay program.

INTENTIONALLY LEFT BLANK

MUNICIPAL DIVISION SUMMARY REPORTING FORM

Refer to instructions for directions and term definitions. Complete a report each month even if there has not been any court activity

I. COURT INFORMATION		Contact information same as last report <input type="checkbox"/>	
Municipality: GRAIN VALLEY		Reporting Period: June, 2022	
Mailing Address: 711 MAIN		Software Vendor: Tyler Technologies	
Physical Address: 711 MAIN		County JACKSON	Circuit: 16
Telephone Number: (816) 847-6240		Fax Number: (816) 847-6209	
Prepared By: Kari Boardman	E-mail Address kboardman@cityofgrainvalley.org	iNotes <input type="checkbox"/>	
Municipal Judge(s): SUSAN WATKINS		Prosecuting Attorney: JEREMY COVER	

II. MONTHLY CASELOAD INFORMATION	Alcohol & Drug related Traffic	Other Traffic	Non-Traffic Ordinance
A. Cases (citations / informations) pending at start of month	89	1,777	384
B. Cases (citations / informations) filed	0	0	1
C. Cases (citations / informations) disposed			
1. jury trial (Springfield, Jefferson County, and St. Louis County only)	0	0	0
2. court / bench trial - GUILTY	0	0	0
3. court / bench trial - NOT GUILTY	0	0	0
4. plea of GUILTY in court	6	6	19
5. Violations Bureau Citations (i.e., written plea of guilty) and bond forfeitures by court order (as payment of fines / costs)	0	0	0
6. dismissed by court	5	4	12
7. nolle prosequi	0	0	0
8. certified for jury trial(not heard in the Municipal Division)	0	0	0
9. TOTAL CASE DISPOSITIONS	11	10	31
D. Cases (citations / informations) pending at end of month [pending caseload = (A + B) - C9]	78	1,767	354
E. Trial de Novo and / or appeal applications filed	0	0	0

III. WARRANT INFORMATION (pre- & post-disposition)	IV. PARKING TICKETS
1. # Issued during reporting period	9
2. # Served/withdrawn during reporting period	15
3. # Outstanding at end of reporting period	455
<input type="checkbox"/> Court staff does not process parking tickets	

MUNICIPAL DIVISION SUMMARY REPORTING FORM

I. COURT INFORMATION	Municipality: GRAIN VALLEY	Reporting Period: June, 2022
-----------------------------	-----------------------------------	-------------------------------------

V. DISBURSEMENTS

Excess Revenue (minor traffic and municipal ordinance violations, subject to the excess revenue percentage limitation)		Other Disbursements cont.	
Fines - Excess Revenue	\$ 1,191.00		\$
Clerk Fee - Excess Revenue	\$ 72.00		\$
Crime Victims Compensation (CVC) Fund surcharge - Paid to City/Excess Revenue	\$ 2.22		\$
Bond forfeitures (paid to city) - Excess Revenue	\$ 0.00		\$
Total Excess Revenue	\$ 1,265.22		\$
Other Revenue (non-minor traffic and ordinance violations not subject to the excess revenue percentage limitation)			\$
Fines - Other	\$ 3,679.37		\$
Clerk Fee - Other	\$ 288.00		\$
Judicial Education Fund (JEF) <input checked="" type="checkbox"/> Court does not retain funds for JEF	\$ 0.00		\$
Peace Officer Standard and Training (POST) Commission surcharge	\$ 31.00		\$
Crime Victims Compensation (CVC) Fund surcharge - Paid to State	\$ 221.03		\$
Crime Victims Compensation (CVC) Fund surcharge - Paid to City/Other	\$ 8.88		\$
Law Enforcement Training (LET) Fund surcharge	\$ 60.00		\$
Domestic Violence Shelter surcharge	\$ 120.00		\$
Inmate Prisoner Detainee Security Fund surcharge	\$ 0.00		\$
Sheriff's Retirement Fund (SRF) surcharge	\$ 0.00		\$
Restitution	\$ 51.50		\$
Parking ticket revenue (including penalties)	\$ 0.00		\$
Bond forfeitures (paid to city) - Other	\$ 0.00		\$
Total Other Revenue	\$ 4,459.78	Total Other Disbursements	\$ 150.00
Other Disbursements: Enter below additional surcharges and/or fees not listed above. Designate if subject to the excess revenue percentage limitation. Examples include, but are not limited to, arrest costs, witness fees, and board bill/jail costs.		Total Disbursements of Costs, Fees, Surcharges and Bonds Forfeited	\$ 5,875.00
OFFICER REIMBURSEMENT DWI	\$ 61.00	Bond Refunds	\$ 2,296.50
EQUIPMENT REIMB DWI	\$ 89.00	Total Disbursements	\$ 8,171.50

Office of State Courts Administrator, Statistics, 2112 Industrial Drive, P.O. Box 104480, Jefferson City, MO 65110

MUNICIPAL DIVISION SUMMARY REPORTING FORM

Refer to instructions for directions and term definitions. Complete a report each month even if there has not been any court activity.

I. COURT INFORMATION		Municipality: GRAIN VALLEY	Reporting Period: Jun 3, 2022 - Jul 5, 2022	
Mailing Address: 711 MAIN STREET, GRAIN VALLEY, MO 64029				
Physical Address: 711 MAIN STREET, GRAIN VALLEY, MO 64029			County: Jackson County	Circuit: 16
Telephone Number:		Fax Number:		
Prepared by: KARI BOARDMAN		E-mail Address: Kari.Boardman@courts.mo.gov		
Municipal Judge: Susan Watkins				
II. MONTHLY CASELOAD INFORMATION				
		Alcohol & Drug Related Traffic	Other Traffic	Non-Traffic Ordinance
A. Cases (citations/informations) pending at start of month		5	80	66
B. Cases (citations/informations) filed		1	27	19
C. Cases (citations/informations) disposed				
1. jury trial (Springfield, Jefferson County, and St. Louis County only)		0	0	0
2. court/bench trial - GUILTY		0	0	0
3. court/bench trial - NOT GUILTY		0	0	0
4. plea of GUILTY in court		1	15	6
5. Violations Bureau Citations (i.e. written plea of guilty) and bond forfeiture by court order (as payment of fines/costs)		0	11	0
6. dismissed by court		1	2	0
7. <i>nolle prosequi</i>		0	3	1
8. certified for jury trial (not heard in Municipal Division)		0	0	0
9. TOTAL CASE DISPOSITIONS		2	31	7
D. Cases (citations/informations) pending at end of month [pending caseload = (A+B)-C9]		4	76	78
E. Trial de Novo and/or appeal applications filed		0	0	0
III. WARRANT INFORMATION (pre- & post-disposition)		IV. PARKING TICKETS		
1. # Issued during reporting period	25	1. # Issued during period	0	
2. # Served/withdrawn during reporting period	4	<input type="checkbox"/> Court staff does not process parking tickets		
3. # Outstanding at end of reporting period	23			

MUNICIPAL DIVISION SUMMARY REPORTING FORM

COURT INFORMATION	Municipality: GRAIN VALLEY	Reporting Period: Jun 3, 2022 - Jul 5, 2022
--------------------------	----------------------------	---

V. DISBURSEMENTS

Excess Revenue (minor traffic and municipal ordinance violations, subject to the excess revenue percentage limitation)		Other Disbursements: Enter below additional surcharges and/or fees not listed above. Designate if subject to the excess revenue percentage limitation. Examples include, but are not limited to, arrest costs and witness fees.	
Fines - Excess Revenue	\$2,269.00	Court Automation	\$215.09
Clerk Fee - Excess Revenue	\$296.73	Law Enf Arrest-Local	\$75.00
Crime Victims Compensation (CVC) Fund surcharge - Paid to City/Excess Revenue	\$9.15	Total Other Disbursements	\$290.09
Bond forfeitures (paid to city) - Excess Revenue	\$0.00	Total Disbursements of Costs, Fees, Surcharges and Bonds Forfeited	\$4,515.50
Total Excess Revenue	\$2,574.88	Bond Refunds	\$0.00
Other Revenue (non-minor traffic and ordinance violations, not subject to the excess revenue percentage limitation)		Total Disbursements	\$4,515.50
Fines - Other	\$1,146.50		
Clerk Fee - Other	\$72.00		
Judicial Education Fund (JEF) <input checked="" type="checkbox"/> Court does not retain funds for JEF	\$0.00		
Peace Officer Standards and Training (POST) Commission surcharge	\$30.72		
Crime Victims Compensation (CVC) Fund surcharge - Paid to State	\$219.09		
Crime Victims Compensation (CVC) Fund surcharge - Paid to City/Other	\$2.22		
Law Enforcement Training (LET) Fund surcharge	\$60.00		
Domestic Violence Shelter surcharge	\$120.00		
Inmate Prisoner Detainee Security Fund surcharge	\$0.00		
Restitution	\$0.00		
Parking ticket revenue (including penalties)	\$0.00		
Bond forfeitures (paid to city) - Other	\$0.00		
Total Other Revenue	\$1,650.53		



HUMAN RESOURCES

MEMORANDUM

TO: Mayor & Board of Aldermen
FROM: Khalilah Holland, Human Resources Administrator
CC: Ken Murphy, City Administrator
DATE: June 30, 2022
SUBJECT: Human Resources Update

June in Review

- IPMA-HR Central Region Training Conference
Public Service Loan Forgiveness (PSLF) Program – Webinar
Employee & Supervisor performance evaluation web demonstration
Mid-year performance evaluation created – due July 31st

Current Positions Available

Full-Time

Table with 4 columns: Position, Date Open, Applicants, Status. Rows include Police Officer (2), Police Clerk, Human Resources/Payroll Coordinator, and Public Works Maintenance Worker.

Part-Time

- None

Seasonal

Table with 4 columns: Position, Date Open, Applicants, Status. Row includes Public Works Maintenance.



HUMAN RESOURCES

Promotions

- None

Recently Filled Positions

- Gabe Keeton, Seasonal Park Maintenance Worker
- Terry Rowland, Front Desk Attendant
- Mason Schrader, Public Works Maintenance Worker – July 11th

July Anniversaries

<u>Name</u>	<u>Department</u>	<u>Years of Service</u>
Bobby Ball	PD	17
Jan Selck	CD	15
Steven Thompson	PD	7