

**CITY OF GRAIN VALLEY BOARD OF ALDERMEN
REGULAR MEETING AGENDA**

FEBRUARY 13, 2017

7:00 P.M.

OPEN TO THE PUBLIC

LOCATED IN THE COUNCIL CHAMBERS OF CITY HALL
711 MAIN STREET – GRAIN VALLEY, MISSOURI

ITEM I: CALL TO ORDER

- Mayor Mike Todd

ITEM II: ROLL CALL

- Deputy City Clerk Khalilah Holland

ITEM III: INVOCATION

- Ray Gurney of Cross Creek Baptist Mission

ITEM IV: PLEDGE OF ALLEGIANCE

- Boy Scouts Pack 310

ITEM V: APPROVAL OF AGENDA

- City Administrator Ryan Hunt

ITEM VI: PROCLAMATIONS

- None

ITEM VII: CITIZEN PARTICIPATION

- Citizens are Asked to Please Limit Their Comments to Two (2) Minutes

ITEM VIII: CONSENT AGENDA

- November 9, 2016 – Planning & Zoning Commission Meeting Minutes
- January 17, 2017 – Board of Aldermen Special Meeting Minutes
- January 19, 2017 – Board of Aldermen Special Meeting Minutes
- January 23, 2017 – Board of Aldermen Regular Meeting Minutes
- February 13, 2017 – Court Destruction Request
- February 13, 2017 – Accounts Payable

ITEM IX: PREVIOUS BUSINESS

- None
-



ITEM X: NEW BUSINESS

- None

ITEM XI: PRESENTATIONS

- None

ITEM XII: PUBLIC HEARING

- None

ITEM XIII: ORDINANCES

**ITEM XIII (A) An Ordinance Approving the Final Plat of Old Towne
B17-01 Marketplace 11th Plat**

2ND READ

Introduced by To gain final plat approval for Old Towne Marketplace 11th Plat
Alderman
Dale Arnold

**ITEM XIII (B) An Ordinance Amending Section 215 of the Code of Ordinances of
B17-02 the City of Grain Valley, Missouri, Pertaining to the Unlawful
1ST READ Possession and Use of Weapons and Establishing an Effective Date
and Penalty Provision**

Introduced by
Alderman
Jeff Coleman

To update the code of ordinances related to unlawful use of weapons
and concealed carry permits

ITEM XIV: RESOLUTIONS

**ITEM XIV (A) A Resolution by the Board of Aldermen of the City of Grain Valley
R17-03 Authorizing the City Administrator to Purchase a Pre-Fabricated
Restroom from CXT, Inc. for Butterfly Trail Park**

Introduced by
Alderman

Valerie Palecek To provide a restroom facility for park users at Butterfly Trail

ITEM XV: CITY ATTORNEY REPORT

- City Attorney Jim Cook

ITEM XVI: CITY ADMINISTRATOR & STAFF REPORTS

- City Administrator Ryan Hunt
- Assistant City Administrator Ken Murphy
- Parks & Recreation Director Shannon Davies
- Community Development Director Rick Arroyo
- Finance Director Cathy Bowden
- Chief of Police David Starbuck
- Deputy City Clerk Khalilah Holland



ITEM XVII: BOARD OF ALDERMEN REPORTS & COMMENTS

- Alderman Dale Arnold
- Alderman Jeff Coleman
- Alderman Bob Headley
- Alderman Chuck Johnston
- Alderman Valerie Palecek
- Alderman Yolanda West

ITEM XVIII: MAYOR REPORT

- Mayor Mike Todd

ITEM XIX: EXECUTIVE SESSION

- Legal Actions, Causes of Action of Litigation Pursuant to Section 610.021(1), RSMo. 1998, as Amended
- Leasing, Purchase or Sale of Real Estate Pursuant to Section 610.021(2), RSMo. 1998, as Amended
- Hiring, Firing, Disciplining or Promoting of Employees (personnel issues), Pursuant to Section 610.021(3), RSMo. 1998, as Amended
- Individually Identifiable Personnel Records, Personnel Records, Performance Ratings or Records Pertaining to Employees or Applicants for Employment, Pursuant to Section 610.021(13), RSMo 1998, as Amended

ITEM XX: ADJOURNMENT

PLEASE NOTE

THE NEXT SCHEDULED MEETING OF THE CITY OF GRAIN VALLEY BOARD OF ALDERMEN WILL TAKE PLACE FEBRUARY 27, 2017 AS A REGULAR MEETING AT 7:00 P.M. TO BE HELD IN THE COUNCIL CHAMBERS OF GRAIN VALLEY CITY HALL

PERSONS REQUIRING AN ACCOMMODATION TO ATTEND AND PARTICIPATE IN THE MEETING SHOULD CONTACT THE CITY CLERK AT 816.847.6211 AT LEAST 48 HOURS BEFORE THE MEETING

THE CITY OF GRAIN VALLEY IS INTERESTED IN EFFECTIVE COMMUNICATION FOR ALL PERSONS

UPON REQUEST, THE MINUTES FROM THIS MEETING CAN BE MADE AVAILABLE BY CALLING 816.847.6211



INTENTIONALLY LEFT BLANK

Consent

Agenda

INTENTIONALLY LEFT BLANK



City of Grain Valley
Planning & Zoning Commission
Meeting Minutes
Regular Meeting

11/9/2016
Page 1 of 2

ITEM I: CALL TO ORDER

- The Planning & Zoning Commission of the City of Grain Valley, Missouri, met in Regular Session on November 9, 2016, at 7:00 p.m. in the Council Chambers of the Grain Valley City Hall
- The meeting was called to order by Debbie Saffell

ITEM II: ROLL CALL

- *Present: James Pycior*
- *Present: Kevin Browning*
- *Present: Bob Dimmitt*
- *Present: Elijah Greene*
- *Present: Debbie Saffell*
- *Absent: Haydn Ambrose*
- *Present: Craig Shelton*
- *Present: Dale Arnold*
- *There was a quorum present*

ITEM III: APPROVAL OF MINUTES

- Elijah Greene motioned to approve the minutes from the October 12, 2016 regular meeting; the motion was seconded by James Pycior; Commission approved 6-0.

ITEM IV: CITIZEN PARTICIPATION

- None

ITEM V: PUBLIC HEARING

- None

ITEM VI: ACTION ITEMS

- Final Plat – Harmony Meadows
 - Rick Arroyo gave an overview of the final plat request and stated that there were no changes from the preliminary plat.
 - James Pycior motioned to approve the final plat of Harmony Meadows; the motion was seconded by Kevin Browning; Commission approved 6-0.

Commissioners Present	Commissioners Absent	Staff Officials Present
Dale Arnold Craig Shelton Elijah Greene Kevin Browning Bob Dimmitt Debbie Saffell James Pycior	Haydn Ambrose	City Engineer - Rick Arroyo



City of Grain Valley
Planning & Zoning Commission
Meeting Minutes
Regular Meeting

11/9/2016
Page 2 of 2

ITEM VII: PREVIOUS BUSINESS

- None

ITEM VIII: NEW BUSINESS

- Trail or Treat
 - Rick Arroyo told the Commissioners that the annual Holiday Event and Mayor's Christmas Tree lighting was going to be

ITEM IX: ADJOURNMENT

- There being no further business, James Pycior motioned to adjourn the November 9, 2016 Planning Commission Meeting; seconded by Debbie Saffell; Commission approved 6-0.

-The Regular Meeting Adjourned at 7:20 p.m.-

Commissioners Present

Dale Arnold
Craig Shelton
Elijah Greene
Kevin Browning
Bob Dimmitt
Debbie Saffell
James Pycior

Commissioners Absent

Haydn Ambrose

Staff Officials Present

City Engineer -
Rick Arroyo



CITY OF GRAIN VALLEY
BOARD OF ALDERMEN MEETING MINUTES
 Special Session

01/17/2017
PAGE 1 OF 2

ITEM I: CALL TO ORDER

- The Board of Aldermen of the City of Grain Valley, Missouri, met in Special Session on January 17, 2017 at 6:00 p.m. in the Conference Room located at Grain Valley City Hall
- The meeting was called to order by Mayor Mike Todd

ITEM II: ROLL CALL

- Deputy City Clerk Khalilah Holland called roll
- *Present: Arnold, Coleman, Headley, Johnston, Palecek, West*
- *Absent: None*

-QUORUM PRESENT-

City Administrator Ryan Hunt reported the Candidate Filing for the April 4, 2017 closed at 5 p.m. The ballot lottery will be held at 3 p.m. on Wednesday, January 18th

ITEM III: EXECUTIVE SESSION

- Mayor Todd stated a need to hold an Executive Session for Hiring, Firing, Disciplining or Promoting of Employees (personnel issues), Pursuant to Section 610.021(3), RSMo. 1998, as Amended
- *Alderman Arnold moved to close the Regular Meeting for items related to Section 610.021(3), RSMo 1998, As Amended.*
- *The motion was seconded by Alderman Headley*
 - No Discussion
- *The motion was voted on with the following roll call vote:*
 - *Aye: Arnold, Coleman, Headley, Johnston, West, Palecek*
 - *Nay: None*
 - *Abstain: None*

-MOTION CARRIED: 6-0-

-THE REGULAR MEETING CLOSED AT 6:02 PM

- *Alderman Headley moved to open the Regular Meeting*
- *The motion was seconded by Alderman Coleman*
 - No Discussion

ELECTED OFFICIALS PRESENT
 Mayor Mike Todd
 Alderman Dale Arnold
 Alderman Jeff Coleman
 Alderman Bob Headley
 Alderman Chuck Johnston
 Alderman Valerie Palecek
 Alderman Yolanda West

ELECTED OFFICIALS ABSENT

STAFF OFFICIALS PRESENT
 City Administrator Ryan Hunt
 Deputy City Clerk Khalilah Holland



CITY OF GRAIN VALLEY
BOARD OF ALDERMEN MEETING MINUTES
 Special Session

01/17/2017
PAGE 2 OF 2

- *The motion was voted on with the following roll call vote:*
 - *Aye: Arnold, Coleman, Headley, Johnston, Palecek, West*
 - *Nay: None*
 - *Abstain: None*

-MOTION CARRIED: 6-0-

-THE REGULAR MEETING OPENED AT 8:33 PM

ITEM VIII: ADJOURNMENT

- The meeting adjourned at 8:33 p.m.

Minutes submitted by:

 Khalilah Holland
Deputy City Clerk

 Date

Minutes approved by:

 Mike Todd
Mayor

 Date

Non-Official Copy

ELECTED OFFICIALS PRESENT
 Mayor Mike Todd
 Alderman Dale Arnold
 Alderman Jeff Coleman
 Alderman Bob Headley
 Alderman Chuck Johnston
 Alderman Valerie Palecek
 Alderman Yolanda West

ELECTED OFFICIALS ABSENT

STAFF OFFICIALS PRESENT
 City Administrator Ryan Hunt
 Deputy City Clerk Khalilah Holland



CITY OF GRAIN VALLEY
BOARD OF ALDERMEN MEETING MINUTES
 Special Session

01/19/2017
 PAGE 1 OF 2

ITEM I: CALL TO ORDER

- The Board of Aldermen of the City of Grain Valley, Missouri, met in Special Session on January 19, 2017 at 6:01 p.m. in the Conference Room located at Grain Valley City Hall
- The meeting was called to order by Mayor Mike Todd

ITEM II: ROLL CALL

- Deputy City Clerk Khalilah Holland called roll
- *Present: Arnold, Coleman, Headley, Johnston, Palecek, West*
- *Absent: None*

-QUORUM PRESENT-

ITEM III: EXECUTIVE SESSION

- Mayor Todd stated a need to hold an Executive Session for Hiring, Firing, Disciplining or Promoting of Employees (personnel issues), Pursuant to Section 610.021(3), RSMo. 1998, as Amended
- *Alderman Arnold moved to close the Regular Meeting for items related to Section 610.021(3), RSMo 1998, As Amended.*
- *The motion was seconded by Alderman West*
 - No Discussion
- *The motion was voted on with the following roll call vote:*
 - *Aye: Arnold, Coleman, Headley, Johnston, West, Palecek*
 - *Nay: None*
 - *Abstain: None*

-MOTION CARRIED: 6-0-

-THE REGULAR MEETING CLOSED AT 6:01 PM

- *Alderman Coleman moved to open the Regular Meeting*
- *The motion was seconded by Alderman Headley*
 - No Discussion
- *The motion was voted on with the following roll call vote:*
 - *Aye: Arnold, Coleman, Headley, Johnston, Palecek, West*
 - *Nay: None*
 - *Abstain: None*

-MOTION CARRIED: 6-0-

-THE REGULAR MEETING OPENED AT 7:29 PM

ELECTED OFFICIALS PRESENT
 Mayor Mike Todd
 Alderman Dale Arnold
 Alderman Jeff Coleman
 Alderman Bob Headley
 Alderman Chuck Johnston
 Alderman Valerie Palecek
 Alderman Yolanda West

ELECTED OFFICIALS ABSENT

STAFF OFFICIALS PRESENT
 City Administrator Ryan Hunt
 Deputy City Clerk Khalilah Holland



CITY OF GRAIN VALLEY
BOARD OF ALDERMEN MEETING MINUTES
 Special Session

01/19/2017
 PAGE 2 OF 2

Alderman Johnston stated he would like to see more City information being provided to the public. The Elected Officials brainstormed for ideas of how get more city information available to the public. City Administrator Hunt is in the process of developing a communication strategy to address the distribution of communication to the public.

ITEM VIII: ADJOURNMENT

- The meeting adjourned at 7:47 p.m.

Minutes submitted by:

 Khalilah Holland
Deputy City Clerk

 Date

Minutes approved by:

 Mike Todd
Mayor

 Date

Non-Official Copy

ELECTED OFFICIALS PRESENT
 Mayor Mike Todd
 Alderman Dale Arnold
 Alderman Jeff Coleman
 Alderman Bob Headley
 Alderman Chuck Johnston
 Alderman Valerie Palecek
 Alderman Yolanda West

ELECTED OFFICIALS ABSENT

STAFF OFFICIALS PRESENT
 City Administrator Ryan Hunt
 Deputy City Clerk Khalilah Holland



CITY OF GRAIN VALLEY
BOARD OF ALDERMEN MEETING MINUTES
 Regular Session

01/23/2017
 PAGE 1 OF 5

ITEM I: CALL TO ORDER

- The Board of Aldermen of the City of Grain Valley, Missouri, met in Regular Session on January 23, 2017 at 7:00 p.m. in the Council Chambers located at Grain Valley City Hall
- The meeting was called to order by Mayor Mike Todd

ITEM II: ROLL CALL

- Deputy City Clerk Khalilah Holland called roll
- *Present: Palecek, Arnold, Headley, West, Johnston, Coleman*
- *Absent:*

-QUORUM PRESENT-

ITEM III: INVOCATION

- Invocation was given by Ryan Hunt

ITEM IV: PLEDGE OF ALLEGIANCE

- The Pledge of Allegiance was led by Alderman Jeff Coleman

ITEM V: APPROVAL OF AGENDA

- No Changes

ITEM VI: PROCLAMATIONS

- None

ITEM VII: CITIZEN PARTICIPATION

- None

ITEM VIII: CONSENT AGENDA

- January 9, 2017 – Board of Aldermen Regular Meeting Minutes
- January 23, 2017 – Accounts Payable
- *Alderman West made a Motion to Approve Consent Agenda*
- *The Motion was Seconded by Alderman Arnold*
 - No Discussion
- *Motion to Approve Consent Agenda was voted on with the following voice vote:*
 - *Aye: Palecek, Arnold, Headley, West, Johnston, Coleman*
 - *Nay: None*
 - *Abstain: None*

ELECTED OFFICIALS PRESENT	ELECTED OFFICIALS ABSENT	STAFF OFFICIALS PRESENT
Mayor Mike Todd		City Attorney Jim Cook
Alderman Dale Arnold		City Administrator Ryan Hunt
Alderman Jeff Coleman		Assistant City Administrator Ken Murphy
Alderman Bob Headley		Deputy City Clerk Khalilah Holland
Alderman Chuck Johnston		Finance Director Cathy Bowden
Alderman Valerie Palecek		Community Development Director Rick Arroyo
Alderman Yolanda West		Chief of Police David Starbuck
		Parks & Recreation Director Shannon Davies



CITY OF GRAIN VALLEY
BOARD OF ALDERMEN MEETING MINUTES
 Regular Session

01/23/2017
 PAGE 2 OF 5

-MOTION APPROVED: 6-0-

ITEM IX: PREVIOUS BUSINESS

Resolution No. R17-01: A Resolution by the Board of Aldermen of the City of Grain Valley, Missouri Authorizing the City Administrator to Enter Into An Agreement with Ron’s Auto & Truck Towing for Towing Services

- City Attorney Jim Cook read **Resolution No. R17-01** by title only
- *Alderman Johnston moved to accept Resolution No. R17-01 as read*
- *The Motion was Seconded by Alderman Headley*
 - After the January 9, 2017 Board of Aldermen meeting, Chief Starbuck met with the owner of Ron’s Auto & Truck Towing and Kustom Cruzers and the parties agreed to keep the tow lot in Grain Valley while Ron’s Auto & Truck Towing provides the towing services for the City.
- *Resolution No. R17-01 was voted upon with the following voice vote:*
 - *Aye: Arnold, Headley, Johnston, Palecek, West, Coleman*
 - *Nay: None*
 - *Abstain: None*

-RESOLUTION NO. R17-01 APPROVED: 6-0-

ITEM X: NEW BUSINESS

- None

ITEM XI: PRESENTATION

- None

ITEM XII: ORDINANCES

Bill No. B17-01: An Ordinance Approving the Final Plat of Old Towne Marketplace 11th Plat

- City Attorney Jim Cook read **Bill No. B17-01** for its first reading by title only
- *Alderman Arnold moved to accept first reading of Bill No. B17-01 bringing it back for a second reading by title only*
- *The Motion was Seconded by Alderman West*
 - Community Development Director Rick Arroyo explained the ordinance is the final plat for Old Towne Marketplace
 - An Edward Jones Investments building is planned for the lot.
 - Access off of Garden Street will consist of a private drive that connects to the

ELECTED OFFICIALS PRESENT
 Mayor Mike Todd
 Alderman Dale Arnold
 Alderman Jeff Coleman
 Alderman Bob Headley
 Alderman Chuck Johnston
 Alderman Valerie Palecek
 Alderman Yolanda West

ELECTED OFFICIALS ABSENT

STAFF OFFICIALS PRESENT
 City Attorney Jim Cook
 City Administrator Ryan Hunt
 Assistant City Administrator Ken Murphy
 Deputy City Clerk Khalilah Holland
 Finance Director Cathy Bowden
 Community Development Director Rick Arroyo
 Chief of Police David Starbuck
 Parks & Recreation Director Shannon Davies



CITY OF GRAIN VALLEY
BOARD OF ALDERMEN MEETING MINUTES
 Regular Session

01/23/2017
PAGE 3 OF 5

existing drive behind the State Farm and Red Cross Pharmacy buildings; Access to Buckner – Tarsney can also be achieved by turning south on Garden and then turning east on Rock Creek Lane

- **Bill No. B17-01** was voted upon with the following voice vote:
 - *Aye: Palecek, Arnold, Headley, West, Johnston, Coleman*
 - *Nay: None*
 - *Abstain: None*

-Bill No. B17-01 Approved for a Second Reading: 6-0-

ITEM XIII: RESOLUTIONS

- None

ITEM XIV: CITY ATTORNEY REPORT

- None

ITEM XV: CITY ADMINISTRATOR & STAFF REPORTS

- City Administrator Ryan Hunt
 - Refreshments will be provided between the regular meeting and the executive session in celebration of Mayor Todd’s birthday
- Community Development Director Ken Murphy
 - None
- Finance Director Cathy Bowden
 - None
- Deputy City Clerk
 - Election filing closed Tuesday, January 17th; ballot lottery was held on Wednesday, January 18th; the following is the order of the ballot:
 - Ward I
 - Chris Bamman
 - Michael Smalley Jr.
 - Ward II
 - Nancy Totton
 - Ward III
 - Jeff Coleman
 - Candidate list was provided to the MO Ethics Commission for Financial Disclosure reporting
 - Candidates were provided to the Jackson County Election Board for certification

ELECTED OFFICIALS PRESENT
 Mayor Mike Todd
 Alderman Dale Arnold
 Alderman Jeff Coleman
 Alderman Bob Headley
 Alderman Chuck Johnston
 Alderman Valerie Palecek
 Alderman Yolanda West

ELECTED OFFICIALS ABSENT

STAFF OFFICIALS PRESENT
 City Attorney Jim Cook
 City Administrator Ryan Hunt
 Assistant City Administrator Ken Murphy
 Deputy City Clerk Khalilah Holland
 Finance Director Cathy Bowden
 Community Development Director Rick Arroyo
 Chief of Police David Starbuck
 Parks & Recreation Director Shannon Davies



CITY OF GRAIN VALLEY
BOARD OF ALDERMEN MEETING MINUTES
 Regular Session

01/23/2017
PAGE 4 OF 5

- Parks & Recreation Director Shannon Davies
 - None
- Chief of Police David Starbuck
 - None

ITEM XVI: BOARD OF ALDERMEN REPORTS & COMMENTS

- Alderman Dale Arnold
 - None
- Alderman Jeff Coleman
 - Proposed the Elected Officials consider the Tobacco 21 legislation for Grain Valley; Mayor Todd, Aldermen Headley and Johnston were opposed to an ordinance limiting the age of use
- Alderman Bob Headley
 - None
- Alderman Chuck Johnston
 - Requested an update on a roadway obstruction on 40 highway; staff did not observe the obstruction but will revisit
- Alderman Valerie Palecek
 - None
- Alderman Yolanda West
 - None

ITEM XVII: MAYOR REPORT

- Mayor Mike Todd
 - None

ITEM XIII: EXECUTIVE SESSION

- Mayor Todd stated a need to hold an Executive Session for Legal Actions, Causes of Action of Litigation Pursuant to Section 610.021(1), RSMo. 1998, as Amended; Hiring, Firing, Disciplining or Promoting of Employees (personnel issues), Pursuant to Section 610.021(3)
- *Alderman Arnold moved to close the Regular Meeting for items related to Section 610.021(1), 610.021(3), RSMo 1998, As Amended*
- *The motion was seconded by Alderman Johnston*
 - No Discussion
- *The motion was voted on with the following roll call vote:*
 - *Aye: Arnold, Headley, Johnston, Palecek, West, Coleman*

ELECTED OFFICIALS PRESENT
 Mayor Mike Todd
 Alderman Dale Arnold
 Alderman Jeff Coleman
 Alderman Bob Headley
 Alderman Chuck Johnston
 Alderman Valerie Palecek
 Alderman Yolanda West

ELECTED OFFICIALS ABSENT

STAFF OFFICIALS PRESENT
 City Attorney Jim Cook
 City Administrator Ryan Hunt
 Assistant City Administrator Ken Murphy
 Deputy City Clerk Khalilah Holland
 Finance Director Cathy Bowden
 Community Development Director Rick Arroyo
 Chief of Police David Starbuck
 Parks & Recreation Director Shannon Davies



CITY OF GRAIN VALLEY
BOARD OF ALDERMEN MEETING MINUTES
 Regular Session

01/23/2017
PAGE 5 OF 5

- *Nay: None*
- *Abstain: None*

-MOTION CARRIED: 6-0-

-THE REGULAR MEETING CLOSED AT 7:13 PM

- *Alderman Headley moved to open the Regular Meeting*
- *The motion was seconded by Alderman Coleman*
 - *No Discussion*
- *The motion was voted on with the following roll call vote:*
 - *Aye: Arnold, Headley, Johnston, Palecek, West, Coleman*
 - *Nay: None*
 - *Abstain: None*

-MOTION CARRIED: 6-0-

-THE REGULAR MEETING OPENED AT 7:28 PM

ITEM XIX: ADJOURNMENT

- The meeting adjourned at 7:28 p.m.

Minutes submitted by:

 Khalilah Holland
Deputy City Clerk

 Date

Minutes approved by:

 Mike Todd
Mayor

 Date

ELECTED OFFICIALS PRESENT

Mayor Mike Todd
 Alderman Dale Arnold
 Alderman Jeff Coleman
 Alderman Bob Headley
 Alderman Chuck Johnston
 Alderman Valerie Palecek
 Alderman Yolanda West

ELECTED OFFICIALS ABSENT

STAFF OFFICIALS PRESENT

City Attorney Jim Cook
 City Administrator Ryan Hunt
 Assistant City Administrator Ken Murphy
 Deputy City Clerk Khalilah Holland
 Finance Director Cathy Bowden
 Community Development Director Rick Arroyo
 Chief of Police David Starbuck
 Parks & Recreation Director Shannon Davies

INTENTIONALLY LEFT BLANK



IN THE CIRCUIT COURT OF JACKSON COUNTY, MISSOURI

Division: 245

Circuit/No. _____ Associate/No. _____ Probate/No. _____

Municipal 245 City of GRAIN VALLEY

Contact Person: Kari Boardman Phone Number: 816-847-6240

Signature of Contact Person: Kari Boardman

FILED

DEC 12 2016

Grain Valley Municipal Court
ORI #MO 048091J

(Date File Stamp)

Court Operating Rule 8 authorizes the chief justice, presiding judge, or chair of the Fine Collections Center with the approval of the court en banc or committee, to issue orders of destruction for those records that have met the required retention period. The records listed below were offered to State Archives and local historical organizations and were refused or no response was received after 45 days. All requirements under Court Operating Rule 8 have been satisfied.

Therefore, it is ordered that THE GRAIN VALLEY MUNICIPAL COURT (Appointing Authority) destroy the records described below.

Order of Destruction

Book or Case Number Series	Book Title or Case Type	Dates of Cases/Books
#100268826 #121276856	ALL DISPOSED MUNICIPAL ORDINANCE CASE FILES <u>EXCEPT</u> THOSE CASES: SIS, DWI, BAC, LEAVING SCENE OF ACCIDENT DWS, FLEEING OR	JANUARY 01, 2012 THRU DECEMBER 31, 2012
#121276857- #130701831	A TEMPTING TO ELUDE OFFICER	JANUARY 01, 2013 THRU DECEMBER 31, 2013

Open Records to be destroyed by the following method: **SHREDDING**

20-JAN-2017
Date

Chief Justice, Presiding Judge, or Chair of the FCC Signature

**CITY OF GRAIN VALLEY
DESTRUCTION CERTIFICATE**

Approved via Consent Agenda this 13th day of February, 2017

By:

Mike Todd
Mayor

Attest:

Khalilah Holland
Deputy City Clerk



Staff witnessed the destruction of the above records via _____ on this ___ day of _____, 2017 in accordance with the practice outlined by the Secretary of State's office above.

This list serves as the permanent record and be attached to the minutes for this regularly scheduled Board of Aldermen meeting.



INTENTIONALLY LEFT BLANK

DEPARTMENT	FUND	VENDOR NAME	DESCRIPTION	AMOUNT_				
NON-DEPARTMENTAL	GENERAL FUND	BLUE CROSS BLUE SHIELD OF KC	PPO	161.58				
			PPO	656.70				
			HSA	465.77				
			HSA	860.84				
			HSA	112.72				
		MO DEPT OF REVENUE	MISSOURI WITHHOLDING	2,487.85				
			MISSOURI WITHHOLDING	2,443.41				
		FAMILY SUPPORT PAYMENT CENTER	VANDER LINDEN CASE 6079233	184.62				
			VANDER LINDEN CASE 6079233	184.62				
		UMB BANK-HSA	HSA - GRAIN VALLEY, MO	960.76				
			HSA - GRAIN VALLEY, MO	963.13				
		DELTA DENTAL OF MO LOCKBOX	DENTAL	77.26				
			DENTAL	135.75				
			DENTAL	53.89				
		FRATERNAL ORDER OF POLICE AFLAC	EMPLOYEE DEDUCTIONS	360.00				
			AFLAC AFTER TAX	71.37				
			AFLAC CRITICAL CARE	6.78				
			AFLAC PRETAX	213.07				
			AFLAC-W2 DD PRETAX	209.19				
		CITY OF GRAIN VALLEY -FLEX	FLEX - DEPENDENT CARE	104.17				
			FLEX - DEPENDENT CARE	105.17				
			FLEX PLAN	131.25				
			FLEX PLAN	131.25				
		ICMA RC	ICMA 457 %	323.74				
			ICMA 457 %	332.42				
			ICMA 457	373.25				
			ICMA 457	375.89				
		INTERNAL REVENUE SERVICE	FEDERAL WH	6,760.37				
			FEDERAL WH	6,393.30				
			SOCIAL SECURITY	3,886.90				
			SOCIAL SECURITY	3,852.50				
			MEDICARE	909.03				
			MEDICARE	900.98				
		VISION SERVICE PLAN - IC	VISION	27.12				
			VISION	21.01				
			VISION	43.71				
			VISION	26.55_				
					TOTAL:	35,307.92		
		HR/CITY CLERK	GENERAL FUND	MSU	MOCCFOA ANNUAL CONFERENCE	810.00_		
					TOTAL:	810.00		
		INFORMATION TECH	GENERAL FUND	NETSTANDARD INC	FEB MONTHLY IT SERVICES	1,217.61		
					UMB BANK-HSA	HSA - GRAIN VALLEY, MO	1.17	
				ESRI INC	ARCGIS/ARCPAD MAINTENANCE	1,061.00		
				DUDE SOLUTIONS INC	ASSET MGMT SOFTWARE	2,098.82		
				CDW GOVERNMENT	BACKUP SOFTWARE	5,015.34		
				VERIZON WIRELESS	CELLULAR SERVICES 01/19-02	160.04		
					CELLULAR SERVICES 01/19-02	40.01		
				INFORMATION TECHNOLOGIES INC	RMS RENEWAL	10,287.00		
				INTERNAL REVENUE SERVICE	SOCIAL SECURITY	2.41		
					MEDICARE	0.56_		
							TOTAL:	19,883.96
				BLDG & GRDS	GENERAL FUND	BLUE CROSS BLUE SHIELD OF KC	HSA	102.48
							MISSOURI LAGERS	MONTHLY CONTRIBUTIONS

DEPARTMENT	FUND	VENDOR NAME	DESCRIPTION	AMOUNT_
		KCP&L	600 BUCKNER TARSNEY RD	12.99
			800 MAIN (FAIRGROUND)	17.26
			CAPPELL & FRONT	11.16
			618 JAMES ROLLO CT	133.78
			6100 S BUCKNER TARSNEY RD	15.11
			618 JAMES ROLLO CT	24.05
			711 MAIN ST	1,109.71
			620 JAMES ROLLO CT	189.68
		UMB BANK-HSA	HSA - GRAIN VALLEY, MO	25.00
			HSA - GRAIN VALLEY, MO	25.00
		STANDARD INSURANCE CO	FEB 17 STANDARD LIFE INSUR	6.00
		ENVIROSTAR WASTE SERVICE INC	JAN FACILITIES SEP-MAR	49.68
		COMCAST - HIERARCY ACCT	COMCAST 46122 CITY HALL	224.04
		GENERAL ELEVATOR	FEB MONTHLY ELEVATOR SERV	93.80
		WINDSTREAM COMMUNICATIONS	WINDSTREAM COMMUNICATIONS	356.45
		DELTA DENTAL OF MO LOCKBOX	DENTAL	9.23
		BEST CLEANING LLC	TEMP JANITORIAL SERVICES	240.00
			TEMP JANITORIAL SERVICES	1,566.25
		FOLEY COMPANY	HVAC/MECHANICAL SERVICES	514.03
		INTERNAL REVENUE SERVICE	SOCIAL SECURITY	38.85
			SOCIAL SECURITY	38.84
			MEDICARE	9.09
			MEDICARE	9.08
			TOTAL:	4,873.56
ADMINISTRATION	GENERAL FUND	BLUE CROSS BLUE SHIELD OF KC	HSA	317.69
			HSA	148.60
			HSA	51.24
			BARTON	409.92
		MISSOURI LAGERS	MONTHLY CONTRIBUTIONS	286.31
		UMB BANK-HSA	HSA - GRAIN VALLEY, MO	62.50
			HSA - GRAIN VALLEY, MO	62.96
		STANDARD INSURANCE CO	FEB 17 STANDARD LIFE INSUR	27.00
		DELTA DENTAL OF MO LOCKBOX	DENTAL	30.12
			DENTAL	13.35
			DENTAL	13.84
		AFLAC	HUNT PREMIUMS	2.25
			HUNT PREMIUMS	27.96
			HUNT PREMIUMS	32.19
		ICMA RC	EMPLOYEE DEDUCTIONS	103.00
			EMPLOYEE DEDUCTIONS	103.99
		INTERNAL REVENUE SERVICE	SOCIAL SECURITY	328.07
			SOCIAL SECURITY	253.88
			MEDICARE	76.73
			MEDICARE	59.37
		VISION SERVICE PLAN - IC	VISION	7.29
			TOTAL:	2,418.26
LEGAL	GENERAL FUND	JAMES T COOK	ATTORNEY FEES	487.50
			ATTORNEY FEES	775.00
			TOTAL:	1,262.50
FINANCE	GENERAL FUND	BLUE CROSS BLUE SHIELD OF KC	HSA	204.96
		MO DEPT OF REVENUE	MISSOURI WITHHOLDING	0.50
			MISSOURI WITHHOLDING	0.50
		MISSOURI LAGERS	MONTHLY CONTRIBUTIONS	197.38

DEPARTMENT	FUND	VENDOR NAME	DESCRIPTION	AMOUNT_
		UMB BANK-HSA	HSA - GRAIN VALLEY, MO	50.00
			HSA - GRAIN VALLEY, MO	50.31
		STANDARD INSURANCE CO	FEB 17 STANDARD LIFE INSUR	12.00
		DELTA DENTAL OF MO LOCKBOX	DENTAL	9.23
			DENTAL	12.50
		INTERNAL REVENUE SERVICE	SOCIAL SECURITY	139.79
			SOCIAL SECURITY	140.95
			MEDICARE	32.70
			MEDICARE	32.96_
			TOTAL:	883.78
COURT	GENERAL FUND	BLUE CROSS BLUE SHIELD OF KC	HSA	204.96
		JAMES T COOK	PROSECUTOR FEES	275.00
			PROSECUTOR FEES	1,425.00
		JOHN R JACK	FEB 2017 JUDICIAL FEES	600.00
		MISSOURI LAGERS	MONTHLY CONTRIBUTIONS	144.89
		UMB BANK-HSA	HSA - GRAIN VALLEY, MO	50.00
			HSA - GRAIN VALLEY, MO	50.00
		STANDARD INSURANCE CO	FEB 17 STANDARD LIFE INSUR	12.00
		DELTA DENTAL OF MO LOCKBOX	DENTAL	18.46
		INTERNAL REVENUE SERVICE	SOCIAL SECURITY	102.19
			SOCIAL SECURITY	102.19
			MEDICARE	23.90
			MEDICARE	23.90_
			TOTAL:	3,032.49
VICTIM SERVICES	GENERAL FUND	BLUE CROSS BLUE SHIELD OF KC	HSA	297.19
		MISSOURI LAGERS	MONTHLY CONTRIBUTIONS	116.37
		UMB BANK-HSA	HSA - GRAIN VALLEY, MO	50.00
			HSA - GRAIN VALLEY, MO	50.00
		STANDARD INSURANCE CO	FEB 17 STANDARD LIFE INSUR	12.00
		DELTA DENTAL OF MO LOCKBOX	DENTAL	26.70
		VERIZON WIRELESS	CELLULAR SERVICES 01/19-02	51.60
		INTERNAL REVENUE SERVICE	SOCIAL SECURITY	132.76
			SOCIAL SECURITY	127.10
			MEDICARE	31.05
			MEDICARE	29.72_
			TOTAL:	924.49
FLEET	GENERAL FUND	BLUE CROSS BLUE SHIELD OF KC	HSA	194.71
		MISSOURI LAGERS	MONTHLY CONTRIBUTIONS	135.50
		UMB BANK-HSA	HSA - GRAIN VALLEY, MO	47.50
			HSA - GRAIN VALLEY, MO	25.57
		STANDARD INSURANCE CO	FEB 17 STANDARD LIFE INSUR	6.00
		DELTA DENTAL OF MO LOCKBOX	DENTAL	23.74
		INTERNAL REVENUE SERVICE	SOCIAL SECURITY	100.50
			SOCIAL SECURITY	54.10
			MEDICARE	23.50
			MEDICARE	12.65_
			TOTAL:	623.77
POLICE	GENERAL FUND	BLUE CROSS BLUE SHIELD OF KC	PPO	297.19
			PPO	840.34
			HSA	594.38
			HSA	2,254.56
			HSA	1,680.68

DEPARTMENT	FUND	VENDOR NAME	DESCRIPTION	AMOUNT_
			HSA	317.69
			ROUNDING	0.16
		MISSOURI LAGERS	EMPLOYER CONTRIBUTIONS	3,833.01
			MONTHLY CONTRIBUTIONS	266.98
		UMB BANK-HSA	HSA - GRAIN VALLEY, MO	900.00
			HSA - GRAIN VALLEY, MO	900.00
		STANDARD INSURANCE CO	FEB 17 STANDARD LIFE INSUR	288.00
		DELTA DENTAL OF MO LOCKBOX	DENTAL	80.10
			DENTAL	203.06
			DENTAL	165.45
			DENTAL	74.97
			ROUNDING	0.08
		HAMPEL OIL INC	BULK GASOHOL/DIESEL	462.83
			BULK GASOHOL/DIESEL	58.77
			BULK GASOHOL/DIESEL	815.71
			BULK GASOHOL/DIESEL	588.25
			BULK GASOHOL/DIESEL	79.75
		COMCAST	HIGH SPEED INTERNET	309.20
		VERIZON WIRELESS	CELLULAR SERVICES 01/19-02	794.61
			CELLULAR SERVICES 01/19-02	80.02
			CELLULAR SERVICES 01/19-02	154.80
		INTERNAL REVENUE SERVICE	SOCIAL SECURITY	2,684.84
			SOCIAL SECURITY	2,724.93
			MEDICARE	627.92
			MEDICARE	637.29
		VISION SERVICE PLAN - IC	SPARKS	11.06
			ROUNDING	0.09
			TOTAL:	22,726.54
ANIMAL CONTROL	GENERAL FUND	BLUE CROSS BLUE SHIELD OF KC	SPARKS	409.92
		STANDARD INSURANCE CO	FEB 17 STANDARD LIFE INSUR	12.00
		DELTA DENTAL OF MO LOCKBOX	SPARKS	36.92
		JACQUELINE SPARKS	SPARKS MEALS: NACHO MODULE	245.00
		VERIZON WIRELESS	CELLULAR SERVICES 01/19-02	31.81
		INTERNAL REVENUE SERVICE	SOCIAL SECURITY	37.20
			SOCIAL SECURITY	81.84
			MEDICARE	8.70
			MEDICARE	19.14
			TOTAL:	882.53
PLANNING & ENGINEERING	GENERAL FUND	BLUE CROSS BLUE SHIELD OF KC	HSA	460.64
			HSA	276.69
		MISSOURI LAGERS	MONTHLY CONTRIBUTIONS	457.14
		UMB BANK-HSA	HSA - GRAIN VALLEY, MO	145.00
			HSA - GRAIN VALLEY, MO	145.80
		STANDARD INSURANCE CO	FEB 17 STANDARD LIFE INSUR	34.80
		DELTA DENTAL OF MO LOCKBOX	DENTAL	14.68
			DENTAL	43.39
		HAMPEL OIL INC	BULK GASOHOL/DIESEL	23.12
			BULK GASOHOL/DIESEL	47.54
			BULK GASOHOL/DIESEL	11.94
		INTERNAL REVENUE SERVICE	SOCIAL SECURITY	322.73
			SOCIAL SECURITY	326.27
			MEDICARE	75.47
			MEDICARE	76.30
			TOTAL:	2,461.51

DEPARTMENT	FUND	VENDOR NAME	DESCRIPTION	AMOUNT_
ECONOMIC DEVELOPMENT	TOURISM TAX FUND	GRAIN VALLEY FAIR	GV FAIR SPONSORSHIP	3,500.00_
			TOTAL:	3,500.00
NON-DEPARTMENTAL	PARK FUND	BLUE CROSS BLUE SHIELD OF KC	PPO	36.50
			HSA	193.68
			HSA	112.72
		MO DEPT OF REVENUE	MISSOURI WITHHOLDING	358.60
			MISSOURI WITHHOLDING	343.18
		UMB BANK-HSA	HSA - GRAIN VALLEY, MO	152.71
			HSA - GRAIN VALLEY, MO	152.24
		DELTA DENTAL OF MO LOCKBOX	DENTAL	16.83
			DENTAL	27.15
			DENTAL	1.21
		AFLAC	AFLAC CRITICAL CARE	3.48
			AFLAC PRETAX	18.17
			AFLAC-W2 DD PRETAX	18.66
		CITY OF GRAIN VALLEY -FLEX	FLEX - DEPENDENT CARE	229.16
			FLEX - DEPENDENT CARE	228.96
			FLEX PLAN	91.67
			FLEX PLAN	91.67
		ICMA RC	ICMA 457 %	139.88
			ICMA 457 %	139.28
			ICMA 457	381.00
			ICMA 457	380.88
		INTERNAL REVENUE SERVICE	FEDERAL WH	1,059.79
			FEDERAL WH	991.95
			SOCIAL SECURITY	748.11
			SOCIAL SECURITY	733.96
			MEDICARE	174.98
			MEDICARE	171.67
		VISION SERVICE PLAN - IC	VISION	6.08_
			TOTAL:	7,004.17
PARK ADMIN	PARK FUND	NETSTANDARD INC	FEB MONTHLY IT SERVICES	202.94
		BLUE CROSS BLUE SHIELD OF KC	HSA	63.54
			HSA	624.10
			HSA	41.00
		MISSOURI LAGERS	MONTHLY CONTRIBUTIONS	450.81
		AT&T	Internet to Park Maint.	60.00
			Internet to Park Maint.	2.00
		UMB BANK-HSA	HSA - GRAIN VALLEY, MO	120.00
			HSA - GRAIN VALLEY, MO	119.79
		BARTLETT & WEST INC	Dillingham Trail Design	11,767.15
		STANDARD INSURANCE CO	FEB 17 STANDARD LIFE INSUR	31.20
		COMCAST - HIERARCY ACCT	COMCAST 46122 CITY HALL	37.34
			COMCAST 90898 TYER TOWER	99.85
		WINDSTREAM COMMUNICATIONS	WINDSTREAM COMMUNICATIONS	59.41
		DELTA DENTAL OF MO LOCKBOX	DENTAL	6.02
			DENTAL	29.37
			DENTAL	3.70
			DENTAL	33.09
			DENTAL	2.50
		HAMPEL OIL INC	BULK GASOHOL/DIESEL	32.65
			BULK GASOHOL/DIESEL	145.87
			BULK GASOHOL/DIESEL	13.53
		AFLAC	HUNT PREMIUMS	0.45

DEPARTMENT	FUND	VENDOR NAME	DESCRIPTION	AMOUNT_
			HUNT PREMIUMS	5.59
			HUNT PREMIUMS	6.44
		VERIZON WIRELESS	CELLULAR SERVICES 01/19-02	52.97
		ICMA RC	EMPLOYEE DEDUCTIONS	20.60
			EMPLOYEE DEDUCTIONS	20.40
		INTERNAL REVENUE SERVICE	SOCIAL SECURITY	323.45
			SOCIAL SECURITY	307.10
			MEDICARE	75.65
			MEDICARE	71.82
		VISION SERVICE PLAN - IC	VISION	1.46_
			TOTAL:	14,831.79
PARKS STAFF	PARK FUND	BLUE CROSS BLUE SHIELD OF KC	PPO	204.96
			HSA	204.96
			HSA	317.69
		MISSOURI LAGERS	MONTHLY CONTRIBUTIONS	329.98
		KCP&L	701 SW EAGLES PKWY BALLFIE	17.26
			ARMSTRONG PARK 041503	19.12
			ARMSTRONG PARK	35.64
			ARMSTRONG PARK 098095	20.92
			800 MAIN (FAIRGROUND)	17.26
			ARMSTRONG PARK 017576	17.26
			28605 E HWY AA #4	27.65
			28605 E HWY AA #3	17.19
			28605 E HWY AA B3	17.19
			28605 E HWY AA #2	17.19
			JAMES ROLLO SHELTER #2	41.03
			MAIN-ARMSTRONG SHELTER 1	17.19
			618 JAMES ROLLO CT	66.89
			ARMSTRONG PARK	81.38
			6100 S BUCKNER TARSNEY	89.58
			28605 E HWY AA FOOTBALL	17.26
			28605 E HWY AA EAST	17.26
			618 JAMES ROLLO CT	12.03
		UMB BANK-HSA	HSA - GRAIN VALLEY, MO	100.00
			HSA - GRAIN VALLEY, MO	100.00
		STANDARD INSURANCE CO	FEB 17 STANDARD LIFE INSUR	36.00
		DELTA DENTAL OF MO LOCKBOX	DENTAL	55.38
		INTERNAL REVENUE SERVICE	SOCIAL SECURITY	236.13
			SOCIAL SECURITY	235.27
			MEDICARE	55.23
			MEDICARE	55.03_
			TOTAL:	2,479.93
COMMUNITY CENTER	PARK FUND	MISSOURI LAGERS	MONTHLY CONTRIBUTIONS	138.35
		KCP&L	713 MAIN ST	1,132.69
			713 MAIN #A	479.66
		STANDARD INSURANCE CO	FEB 17 STANDARD LIFE INSUR	12.00
		ENVIROSTAR WASTE SERVICE INC	JAN COMM CENTR OCT-MAY	55.00
			JAN FACILITIES SEP-MAR	21.60
		COMCAST - HIERARCY ACCT	COMCAST 46130 CC	224.03
		DELTA DENTAL OF MO LOCKBOX	DENTAL	18.46
		VERIZON WIRELESS	CELLULAR SERVICES 01/19-02	51.60
		FOLEY COMPANY	HVAC/MECHANICAL SERVICES	385.52
		STEPHEN D WELLER	DJ FATHER/DAUGHTER DANCE	250.00
		INTERNAL REVENUE SERVICE	SOCIAL SECURITY	188.53

DEPARTMENT	FUND	VENDOR NAME	DESCRIPTION	AMOUNT_
			SOCIAL SECURITY	186.58
			SOCIAL SECURITY	5.01
			MEDICARE	44.10
			MEDICARE	43.65
			MEDICARE	1.17_
			TOTAL:	3,237.95
NON-DEPARTMENTAL	TRANSPORTATION	BLUE CROSS BLUE SHIELD OF KC	PPO	32.32
			HSA	23.06
			HSA	172.16
		MO DEPT OF REVENUE	MISSOURI WITHHOLDING	179.38
			MISSOURI WITHHOLDING	140.55
		FAMILY SUPPORT PAYMENT CENTER	DZEKUNSKAS CASE 41452523	21.00
		UMB BANK-HSA	HSA - GRAIN VALLEY, MO	70.89
			HSA - GRAIN VALLEY, MO	69.48
		DELTA DENTAL OF MO LOCKBOX	DENTAL	3.83
			DENTAL	16.29
			DENTAL	2.42
		AFLAC	AFLAC PRETAX	6.78
			AFLAC-W2 DD PRETAX	8.05
		ICMA RC	ICMA 457	29.25
			ICMA 457	28.89
		INTERNAL REVENUE SERVICE	FEDERAL WH	570.30
			FEDERAL WH	438.13
			SOCIAL SECURITY	294.55
			SOCIAL SECURITY	245.52
			MEDICARE	68.89
			MEDICARE	57.44
		VISION SERVICE PLAN - IC	VISION	1.11
			VISION	5.82
			VISION	1.77_
			TOTAL:	2,487.88
TRANSPORTATION	TRANSPORTATION	NETSTANDARD INC	FEB MONTHLY IT SERVICES	121.76
		BLUE CROSS BLUE SHIELD OF KC	PPO	59.44
			HSA	74.30
			HSA	278.01
			HSA	336.12
		MISSOURI LAGERS	MONTHLY CONTRIBUTIONS	369.31
		KCP&L	655 SW EAGLES PKWY	28.83
			GRAIN VALLEY ST LIGHTS	6,507.74
			GRAIN VALLEY STREET LT	5,312.82
			GRAIN VALLEY ST LGHTS	75.23
			618 JAMES ROLLO CT	133.78
			AA HWY & SNI-A-BAR BLVD	24.49
			618 JAMES ROLLO CT	24.05
			711 MAIN ST	95.11
		UMB BANK-HSA	HSA - GRAIN VALLEY, MO	120.35
			HSA - GRAIN VALLEY, MO	117.32
		STANDARD INSURANCE CO	FEB 17 STANDARD LIFE INSUR	30.60
		COMCAST - HIERARCY ACCT	COMCAST 46122 CITY HALL	22.40
			COMCAST 69165 PW	25.18
		GENERAL ELEVATOR	FEB MONTHLY ELEVATOR SERV	8.04
		WINDSTREAM COMMUNICATIONS	WINDSTREAM COMMUNICATIONS	35.65
			PHONE CHARGES 01/21-02/20	47.73
		DELTA DENTAL OF MO LOCKBOX	DENTAL	6.68

DEPARTMENT	FUND	VENDOR NAME	DESCRIPTION	AMOUNT_
			DENTAL	28.72
			DENTAL	19.86
			DENTAL	5.00
		HAMPEL OIL INC	BULK GASOHOL/DIESEL	131.86
			BULK GASOHOL/DIESEL	86.30
			BULK GASOHOL/DIESEL	62.91
		DUDE SOLUTIONS INC	ASSET MGMT SOFTWARE	2,098.82
		COMCAST	PHONE/CABLE/INTERNET	56.47
			PHONE/CABLE/INTERNET	37.98
		VERIZON WIRELESS	CELLULAR SERVICES 01/19-02	24.68
		FOLEY COMPANY	HVAC/MECHANICAL SERVICES	35.05
		INTERNAL REVENUE SERVICE	SOCIAL SECURITY	294.57
			SOCIAL SECURITY	245.53
			MEDICARE	68.89
			MEDICARE	57.43_
			TOTAL:	17,109.01
DEBT SERVICE	DEBT SERVICE FUND	UMB BANK NA	GVM3 GO RFDG BDS SRS 2013	35,700.00
			GVM3 GO RFDG BDS SRS 2013	1,250,000.00_
			TOTAL:	1,285,700.00
NON-DEPARTMENTAL	WATER/SEWER FUND	BLUE CROSS BLUE SHIELD OF KC	PPO	129.26
			HSA	147.56
			HSA	688.68
			HSA	112.72
		MO DEPT OF REVENUE	MISSOURI WITHHOLDING	1,158.17
			MISSOURI WITHHOLDING	960.86
		FAMILY SUPPORT PAYMENT CENTER	DZEKUNSKAS CASE 41452523	84.00
		UMB BANK-HSA	HSA - GRAIN VALLEY, MO	558.19
			HSA - GRAIN VALLEY, MO	557.70
		DELTA DENTAL OF MO LOCKBOX	DENTAL	24.48
			DENTAL	65.16
			DENTAL	27.25
		AFLAC	AFLAC PRETAX	52.29
			AFLAC-W2 DD PRETAX	55.01
		MISCELLANEOUS	SCOFIELD, AMY	10-410100-02
			SAPPINGTON, SCOTT	10-474570-02
			WILSON, TRENT	20-620190-01
			BROWN, NATHAN	10-900881-04
			HULL, MALISSA	20-119200-07
			NEIDHOLDT, CARL	20-119700-14
			JASMINE INVESTMENTS	20-121500-10
			MEINEKA, MICHELLE	20-562030-08
			SCHAUER, CURT	20-562340-02
			BROWN, TYLER	20-562390-08
			SALLEE HOMES	20-567680-00
			ALBRECHT JR, TIMOTHY	20-588413-01
			JOHNSON, SCOTT	20-622390-03
			PJ HOMES LLC	20-622625-00
			WINEFIELD, HEATHER L	20-682990-05
			SMITH, JUDY	20-700110-06
			B3 FITNESS	20-702480-02
		CITY OF GRAIN VALLEY -FLEX	FLEX - DEPENDENT CARE	83.33
			FLEX - DEPENDENT CARE	82.53
		ICMA RC	ICMA 457 %	210.21
			ICMA 457 %	207.84

DEPARTMENT	FUND	VENDOR NAME	DESCRIPTION	AMOUNT_
			ICMA 457	241.50
			ICMA 457	239.34
		INTERNAL REVENUE SERVICE	FEDERAL WH	3,797.63
			FEDERAL WH	3,104.92
			SOCIAL SECURITY	1,893.22
			SOCIAL SECURITY	1,675.99
			MEDICARE	442.78
			MEDICARE	391.95
		VISION SERVICE PLAN - IC	VISION	10.51
			VISION	23.32
			VISION	7.08
			TOTAL:	17,727.07
WATER	WATER/SEWER FUND	NETSTANDARD INC	FEB MONTHLY IT SERVICES	243.52
		BLUE CROSS BLUE SHIELD OF KC	PPO	118.88
			HSA	127.08
			HSA	237.76
			HSA	860.16
			HSA	672.28
			HSA	158.85
		MISSOURI LAGERS	MONTHLY CONTRIBUTIONS	1,169.91
		KCP&L	825 STONE BROOK DR	82.64
			1301 TYER RD UNIT A	101.12
			618 JAMES ROLLO CT	167.23
			110 SNI-A-BAR BLVD	98.78
			1301 TYER RD UNIT B	265.61
			618 JAMES ROLLO CT	30.07
			618 JAMES ROLLO CT UNIT B	2,088.78
			711 MAIN ST	190.24
			1012 STONEBROOK LN	86.82
		UMB BANK-HSA	HSA - GRAIN VALLEY, MO	364.84
			HSA - GRAIN VALLEY, MO	376.07
		STANDARD INSURANCE CO	FEB 17 STANDARD LIFE INSUR	100.20
		ENVIROSTAR WASTE SERVICE INC	JAN FACILITIES SEP-MAR	18.36
		COMCAST - HIERARCY ACCT	COMCAST 46122 CITY HALL	44.81
			COMCAST 69165 PW	50.36
		GENERAL ELEVATOR	FEB MONTHLY ELEVATOR SERV	16.08
		WINDSTREAM COMMUNICATIONS	WINDSTREAM COMMUNICATIONS	71.29
			PHONE CHARGES 01/21-02/20	95.46
		DELTA DENTAL OF MO LOCKBOX	DENTAL	12.05
			DENTAL	21.36
			DENTAL	84.43
			DENTAL	39.69
			DENTAL	28.12
		HAMPEL OIL INC	BULK GASOHOL/DIESEL	263.71
			BULK GASOHOL/DIESEL	172.59
			BULK GASOHOL/DIESEL	125.80
		AFLAC	HUNT PREMIUMS	0.90
			HUNT PREMIUMS	11.18
			HUNT PREMIUMS	12.88
		DUDE SOLUTIONS INC	ASSET MGMT SOFTWARE	4,074.01
		COMCAST	PHONE/CABLE/INTERNET	112.95
			PHONE/CABLE/INTERNET	75.96
		BEST CLEANING LLC	TEMP JANITORIAL SERVICES	120.00
			TEMP JANITORIAL SERVICES	783.13
		VERIZON WIRELESS	CELLULAR SERVICES 01/19-02	49.37

DEPARTMENT	FUND	VENDOR NAME	DESCRIPTION	AMOUNT_
		FOLEY COMPANY	HVAC/MECHANICAL SERVICES	116.83
		ICMA RC	EMPLOYEE DEDUCTIONS	41.20
			EMPLOYEE DEDUCTIONS	40.80
		INTERNAL REVENUE SERVICE	SOCIAL SECURITY	946.60
			SOCIAL SECURITY	837.99
			MEDICARE	221.40
			MEDICARE	195.99
		VISION SERVICE PLAN - IC	VISION	2.91
			TOTAL:	16,229.05
SEWER	WATER/SEWER FUND	NETSTANDARD INC	FEB MONTHLY IT SERVICES	243.52
		BLUE CROSS BLUE SHIELD OF KC	PPO	118.87
			HSA	127.07
			HSA	237.74
			HSA	860.19
			HSA	672.28
			HSA	158.84
		MISSOURI LAGERS	MONTHLY CONTRIBUTIONS	1,169.89
		KCP&L	925 STONE BROOK DR	17.19
			WOODLAND DR	351.34
			405 JAMES ROLLO DR	369.63
			1326 GOLFVIEW DR	95.63
			618 JAMES ROLLO CT	167.22
			WINDING CREEK SEWER	17.26
			618 JAMES ROLLO CT	30.07
			711 MAIN ST	190.24
			1201 SEYMOUR RD	17.26
			110 NW SNI-A-BAR BLVD	17.19
			1017 ROCK CREEK LN	17.19
		UMB BANK-HSA	HSA - GRAIN VALLEY, MO	364.81
			HSA - GRAIN VALLEY, MO	376.01
		STANDARD INSURANCE CO	FEB 17 STANDARD LIFE INSUR	100.20
		ENVIROSTAR WASTE SERVICE INC	JAN FACILITIES SEP-MAR	18.36
		COMCAST - HIERARCY ACCT	COMCAST 46122 CITY HALL	44.81
			COMCAST 69165 PW	50.36
		GENERAL ELEVATOR	FEB MONTHLY ELEVATOR SERV	16.08
		WINDSTREAM COMMUNICATIONS	WINDSTREAM COMMUNICATIONS	71.29
			PHONE CHARGES 01/21-02/20	95.47
		DELTA DENTAL OF MO LOCKBOX	DENTAL	12.05
			DENTAL	21.36
			DENTAL	84.36
			DENTAL	39.72
			DENTAL	28.10
		HAMPEL OIL INC	BULK GASOHOL/DIESEL	263.71
			BULK GASOHOL/DIESEL	172.59
			BULK GASOHOL/DIESEL	125.80
		AFLAC	HUNT PREMIUMS	0.90
			HUNT PREMIUMS	11.19
			HUNT PREMIUMS	12.87
		DUDE SOLUTIONS INC	ASSET MGMT SOFTWARE	4,074.18
		COMCAST	PHONE/CABLE/INTERNET	112.95
			PHONE/CABLE/INTERNET	75.96
		BEST CLEANING LLC	TEMP JANITORIAL SERVICES	120.00
			TEMP JANITORIAL SERVICES	783.12
		VERIZON WIRELESS	CELLULAR SERVICES 01/19-02	49.37
		FOLEY COMPANY	HVAC/MECHANICAL SERVICES	116.82

DEPARTMENT	FUND	VENDOR NAME	DESCRIPTION	AMOUNT_
		ICMA RC	EMPLOYEE DEDUCTIONS	41.20
			EMPLOYEE DEDUCTIONS	40.81
		INTERNAL REVENUE SERVICE	SOCIAL SECURITY	946.57
			SOCIAL SECURITY	837.98
			MEDICARE	221.35
			MEDICARE	195.98
		VISION SERVICE PLAN - IC	VISION	2.91_
			TOTAL:	14,407.86
NON-DEPARTMENTAL	GENERAL FUND	BLUE CROSS BLUE SHIELD OF KC	PPO	161.58
			PPO	656.70
			HSA	466.69
			HSA	860.84
			HSA	112.72
		KCMO CITY TREASURER	KC EARNINGS TAX WH	39.23
			KC EARNINGS TAX WH	39.42
		DELTA DENTAL OF MO LOCKBOX	DENTAL	77.41
			DENTAL	135.75
			DENTAL	48.65
		FRATERNAL ORDER OF POLICE	EMPLOYEE DEDUCTIONS	315.00
		HAMPEL OIL INC	CJC FUEL	225.43
			CJC FUEL	459.30
			CJC FUEL	339.03
		AFLAC	AFLAC AFTER TAX	71.37
			AFLAC CRITICAL CARE	6.78
			AFLAC PRETAX	213.53
			AFLAC-W2 DD PRETAX	209.39
		JPNS CORP	LYON RESTITUTION	30.00
		CHELSEA BEDELL	MCGRATH RESTITUTION	500.00
		MISCELLANEOUS	OREILLY AUTO PARTS:	1,398.59
		VISION SERVICE PLAN - IC	VISION	27.12
			VISION	21.13
			VISION	43.71
			VISION	26.55_
			TOTAL:	6,485.92
HR/CITY CLERK	GENERAL FUND	VALIDITY SCREENING SOLUTIONS	DEMOSSE SCREENING	73.00
			MARTIN SCREENING	60.00
		US HEALTHWORKS	CROWL-HUTCHENS SCREENING	160.00
			MURRY SCREENING	160.00
			DEMOSSE SCREENING	83.00
			CLAPHAN SCREENING	83.00
		CBIZ PAYROLL	JAN 17 COBRA	61.72_
			TOTAL:	680.72
INFORMATION TECH	GENERAL FUND	BLUE CROSS BLUE SHIELD OF KC	HSA	4.79
		MISSOURI LAGERS	MONTHLY CONTRIBUTIONS	3.24
		DELTA DENTAL OF MO LOCKBOX	DENTAL	0.43
		NEW AGE GRAPHICS LLC	ANNUAL WEBSITE REVIEW	240.00_
			TOTAL:	248.46
BLDG & GRDS	GENERAL FUND	BLUE CROSS BLUE SHIELD OF KC	HSA	102.48
		MISSOURI LAGERS	MONTHLY CONTRIBUTIONS	52.00
		SHERWIN WILLIAMS	PAINT FOR MURPHYS OFFICE	88.29
		LEXINGTON PLUMBING & HEATING COMPANY	NEW CARTRIDGE MENS BASEMEN	462.00
		PROGRESSIVE ELECTRONICS	REPLACED READER AT EAST DO	431.00

DEPARTMENT	FUND	VENDOR NAME	DESCRIPTION	AMOUNT_
		DELTA DENTAL OF MO LOCKBOX	DENTAL	9.23
		KORNIS ELECTRIC SUPPLY INC	CITY HALL EAST CANOPY LIGH	59.00
		GREGS LOCK & KEY SERVICE INC	KEY LOCK BOX IN LOBBY	35.73
			SERV CALL & LABOR PICK UP	247.40_
			TOTAL:	1,487.13
ADMINISTRATION	GENERAL FUND	BLUE CROSS BLUE SHIELD OF KC	HSA	320.74
			HSA	151.59
			HSA	50.04
		RICOH USA INC	MAILROOM C85075881	80.06
			ADMIN C85075927	62.88
			PD DOWN C85075930	43.37
		GV CHAMBER OF COMMERCE	HOLLAND/HUNT/MURPHY/NADEAU	40.00
		MISSOURI LAGERS	MONTHLY CONTRIBUTIONS	288.76
		SAMS CLUB/GEGRB	SUPPLIES/KITCHEN SUPPLIES	39.86
		OFFICE DEPOT	INK/PAPER/TAPE/HANG FLDRS	37.18
			PAPER/CLEANER/GLUESTICK	27.50
		DELTA DENTAL OF MO LOCKBOX	DENTAL	30.41
			DENTAL	13.62
			DENTAL	14.00
		MICHAEL R COON	2) DIGITAL IMAGES W/COPYRI	40.00
		AFLAC	HUNT PREMIUMS	2.27
			HUNT PREMIUMS	28.23
			HUNT PREMIUMS	32.50
		HOME DEPOT CREDIT SERVICES	TOTES FOR LIGHT POLE GARLA	88.80
		ROTARY CLUB OF BLUE SPRINGS	RYAN HUNT-1ST QTR DUES	221.00
		VISION SERVICE PLAN - IC	VISION	7.35_
			TOTAL:	1,620.16
LEGAL	GENERAL FUND	OFFICE DEPOT	HARDDRIVE	119.99_
			TOTAL:	119.99
FINANCE	GENERAL FUND	BLUE CROSS BLUE SHIELD OF KC	HSA	206.23
		MISSOURI LAGERS	MONTHLY CONTRIBUTIONS	199.02
		OFFICE DEPOT	CALC SPOOLS/PAPER/BATTERY	8.85
			STAMP/RUBBER BANDS	7.29
		DELTA DENTAL OF MO LOCKBOX	DENTAL	9.23
			DENTAL	12.65
		MOGFOA	17 WINTER SEMINAR: BOWDEN/	190.00_
			TOTAL:	633.27
COURT	GENERAL FUND	BLUE CROSS BLUE SHIELD OF KC	HSA	204.96
		MISSOURI LAGERS	MONTHLY CONTRIBUTIONS	144.89
		PETTY CASH	PRISONER LUNCH	6.82
			PRISONER LUNCH	5.74
		OFFICE DEPOT	FILES/LABELS/FOLDERS	238.62
		DELTA DENTAL OF MO LOCKBOX	DENTAL	18.46_
			TOTAL:	619.49
VICTIM SERVICES	GENERAL FUND	BLUE CROSS BLUE SHIELD OF KC	HSA	297.19
		MISSOURI LAGERS	MONTHLY CONTRIBUTIONS	116.37
		DELTA DENTAL OF MO LOCKBOX	DENTAL	26.70_
			TOTAL:	440.26
FLEET	GENERAL FUND	BLUE CROSS BLUE SHIELD OF KC	HSA	104.81
		MISSOURI LAGERS	MONTHLY CONTRIBUTIONS	72.93

DEPARTMENT	FUND	VENDOR NAME	DESCRIPTION	AMOUNT_
		ADVANCE AUTO PARTS	18) OIL 0W20 FULL SYN 1 QT	59.22
			ENGINE ASSEMBLY LUBE	5.41
			12) OIL FILTER/24) BRAKE CLE	73.80
		OFFICE DEPOT	INK/PAPER/TAPE/HANG FLDRS	71.99
		OREILLY AUTOMOTIVE INC	SQUEEGEES	11.98
			HOSE 3/4" WR	56.99
			TRANSFER PMP	370.00
			NOZZLE/NOZZLE 1"	216.98
			BALL CLAMPS	4.49
			FOOT VALVE	39.15
			1GAL ANTIFREEZE	29.98
			HAMMER	15.99
		DELTA DENTAL OF MO LOCKBOX	DENTAL	12.78
		FASTENAL COMPANY	CABLE TIE/COUPLER	62.32
		HOME DEPOT CREDIT SERVICES	GROUND ROD COPPER/2GL GAS	47.62
		CINTAS CORPORATION # 430	PW/WOLTZ UNIFORMS	9.48
			PW/WOLTZ UNIFORMS	9.48
			PW/WOLTZ UNIFORMS	9.48
		GRAINGER	COUPLER/ADAPTER	21.88
			TOTAL:	1,306.76
POLICE	GENERAL FUND	BLUE CROSS BLUE SHIELD OF KC	PPO	297.19
			PPO	840.34
			HSA	594.38
			HSA	2,254.56
			HSA	1,680.68
			HSA	317.69
		RICOH USA INC	PD C85075912	122.13
			PD C85075921	9.08
		GALLS LLC	A187 RC CLOTH COMMENDATION	4.23
			8IN DURASHOCKS	100.00
			2) A187 RC CLOTH COMMENDATI	8.48
			RADIO POUCH	18.93
		GV CHAMBER OF COMMERCE	STARBUCK	10.00
		MISSOURI LAGERS	EMPLOYER CONTRIBUTIONS	3,897.22
			MONTHLY CONTRIBUTIONS	380.88
		PETTY CASH	PALECEK GFOA LUNCH/MEETING	10.00
			KEYS	12.45
			BATTERIES	15.00
		SAMS CLUB/GEGRB	SUPPLIES/KITCHEN SUPPLIES	107.59
			FINANCE CHARGE	1.00
		ADVANCE AUTO PARTS	2) HEAD BOLT SET/HEAD GASK	245.22
			OIL PAN GASKET SET/TIMING	105.52
		OFFICE DEPOT	INK/PAPER/LABEL FILE FLDR	428.55
			PADS	11.69
			PAPER/POST-IT NOTES/TAPE	146.83
			ORGANIZER, DRAWER 16X9X1	3.69
		ACCENT AUTOMOTIVE INC	V-8 VALVE/SPRINGS	294.12
			FULL SET LIFTER	475.34
		MIDWEST TINTING INC	2013 FORD/2016 FORD IN-AUT	490.00
		OREILLY AUTOMOTIVE INC	IGN COIL	25.63
			IGN COIL	25.63-
			CAMSHAFT/LIFTER ASSY	562.58
			RYP 11487	19.98
			CAMSHAFT/LIFTER	562.58-
			CAMSHAFT	140.36

DEPARTMENT	FUND	VENDOR NAME	DESCRIPTION	AMOUNT_
			OIL PRESS/OIL FILTER	54.10
			W/P GASKET	5.99
		STEVEN SMITH	STRAASBURG: BUSINESS CARDS	54.00
		DELTA DENTAL OF MO LOCKBOX	DENTAL	80.10
			DENTAL	203.06
			DENTAL	165.45
			DENTAL	74.97
		GOODYEAR COMMERCIAL TIRE	3) GY 245/55R18 EAG RSA VS	381.00
		JACKSON COUNTY DRUG TASK FORCE	JAG INVESTMENT 2017	100.00
		METRO FORD	334 AERIAL	15.17
		HEATHER STEELE	STEELE:MEALS FOR LEADERSHI	46.00
			EXTERNAL CARRIER: EQUIPMEN	186.24
		REJIS COMMISSION	JAN 16 LEWEB SUBSCRIPTION	249.95_
			TOTAL:	14,659.16
ANIMAL CONTROL	GENERAL FUND	DONNPAUL GRAPHIX LLC	GV ANIMAL CONTROL	123.40
		OREILLY AUTOMOTIVE INC	CAMERA	120.00_
			TOTAL:	243.40
PLANNING & ENGINEERING	GENERAL FUND	BLUE CROSS BLUE SHIELD OF KC	HSA	460.64
			HSA	279.94
		GV CHAMBER OF COMMERCE	ARROYO	10.00
		MISSOURI LAGERS	MONTHLY CONTRIBUTIONS	461.74
		SAMS CLUB/GEGRB	SUPPLIES/KITCHEN SUPPLIES	69.22
		OFFICE DEPOT	PAPER/CLEANER/GLUESTICK	12.29
		DELTA DENTAL OF MO LOCKBOX	DENTAL	14.68
			DENTAL	43.68
		GOODYEAR COMMERCIAL TIRE	2) GY 215/70R16 WRL SRA	157.48_
			TOTAL:	1,509.67
NON-DEPARTMENTAL	PARK FUND	BLUE CROSS BLUE SHIELD OF KC	PPO	36.50
			HSA	193.50
			HSA	112.72
		KCMO CITY TREASURER	KC EARNINGS TAX WH	16.47
			KC EARNINGS TAX WH	16.47
		DELTA DENTAL OF MO LOCKBOX	DENTAL	16.80
			DENTAL	27.15
			DENTAL	1.20
		AFLAC	AFLAC CRITICAL CARE	3.48
			AFLAC PRETAX	18.10
			AFLAC-W2 DD PRETAX	18.62
		VISION SERVICE PLAN - IC	VISION	6.07_
			TOTAL:	467.08
PARK ADMIN	PARK FUND	BLUE CROSS BLUE SHIELD OF KC	HSA	62.93
			HSA	623.50
			HSA	40.74
		FELDMANS FARM & HOME	PARRISH/CHANCE JEANS & COA	282.19
		GV CHAMBER OF COMMERCE	DAVIES/MEYER	20.00
		MISSOURI LAGERS	MONTHLY CONTRIBUTIONS	449.83
		WALMART COMMUNITY	OFFICE SUPPLIES	31.50
		OFFICE DEPOT	INK/PAPER/TAPE/HANG FLDRS	15.20
			CARDSTK, PASTL, AST20/PK	27.58
			PENS/TAPE/PAPER	6.42
		DELTA DENTAL OF MO LOCKBOX	DENTAL	5.97
			DENTAL	29.32

DEPARTMENT	FUND	VENDOR NAME	DESCRIPTION	AMOUNT_
			DENTAL	3.64
			DENTAL	33.09
			DENTAL	2.47
		MICHAEL R COON	ANNUAL PARK BOARD PHOTO	180.00
		KORNIS ELECTRIC SUPPLY INC	GRAIN VALLEY SCHOOL DISTRI	64.93
			GRAIN VALLEY SCHOOL	64.93-
		AFLAC	HUNT PREMIUMS	0.45
			HUNT PREMIUMS	5.54
			HUNT PREMIUMS	6.38
		VISION SERVICE PLAN - IC	VISION	1.44_
			TOTAL:	1,828.19
PARKS STAFF	PARK FUND	BLUE CROSS BLUE SHIELD OF KC	PPO	204.96
			HSA	204.96
			HSA	317.69
		K C BOBCAT	HINGE DOOR CAB/WIPER BLADE	196.94
		MISSOURI LAGERS	MONTHLY CONTRIBUTIONS	328.82
		KNAPHEIDE TRUCK EQ CENTER	HARNESSESS HH STR BLADE/GLAND	59.42
		DELTA DENTAL OF MO LOCKBOX	DENTAL	55.38
		WEST CENTRAL ELECTRIC COOP INC	12/28-01/27 BALLPARK COMPL	144.54
		HOME DEPOT CREDIT SERVICES	LIGHTS/WALL ANCHORS	167.65
		LAWN & LEISURE	CHAINSAW CHAINS & CHAIN SH	83.98
			BAR OIL & CHAIN SHARPEN	32.50
		LAWN & LEISURE	SAFETY CHAPS/HELEMTS & CHA	371.16_
			TOTAL:	2,168.00
COMMUNITY CENTER	PARK FUND	MELODY TAYLOR	01/13-02/01 SILVERSNEAKERS	200.00
			01/16-01/30 SILVERSNEAKERS	75.00
		RICOH USA INC	COMM CTR C85075928	44.41
			COMM CTR C85075922	10.91
		UNIFIRST CORPORATION	CC JANITORIAL SUPPLIES	72.40
		MISSOURI LAGERS	MONTHLY CONTRIBUTIONS	138.35
		WALMART COMMUNITY	RETURNS FROM PRINCESS PART	10.52-
			PRINCESS PARTY SUPPLIES	4.97
			PRINCESS PARTY SUPPLIES	77.75
			PRINCESS PARTY SUPPLIES	35.54
			PRINCESS PARTY SUPPLIES	11.15
		OFFICE DEPOT	INK/PAPER/TAPE/HANG FLDRS	4.84
			PENS/TAPE/PAPER	69.13
		PRISCILLA YOUNG	12/27-01/31 YOGA FUSION	57.60
		DELTA DENTAL OF MO LOCKBOX	DENTAL	18.46
		HOME DEPOT CREDIT SERVICES	CC FITNESS ROOM:PAINT/ROLL	240.02
			16" BRKT/SCREWS	120.40-
			CC FITNESS ROOM: 5 SHELF U	199.00
			CC FITNESS ROOM: SPACKLING	10.96
		MEYER LABORATORY INC	CC JANITORIAL SUPPLIES	283.14
		FREDAH JOHNSTON	01/12-01/31 LINE DANCING	184.50
		UMB BANK NA	GV MO RFDG COP S/2006	2,120.00_
			TOTAL:	3,727.21
NON-DEPARTMENTAL	TRANSPORTATION	BLUE CROSS BLUE SHIELD OF KC	PPO	32.32
			HSA	41.51
			HSA	172.16
		DELTA DENTAL OF MO LOCKBOX	DENTAL	6.89
			DENTAL	16.29
			DENTAL	2.42

DEPARTMENT	FUND	VENDOR NAME	DESCRIPTION	AMOUNT_
		AFLAC	AFLAC PRETAX	6.76
			AFLAC-W2 DD PRETAX	8.05
		VISION SERVICE PLAN - IC	VISION	1.81
			VISION	1.11
			VISION	5.82
			VISION	1.77_
			TOTAL:	296.91
TRANSPORTATION	TRANSPORTATION	BLUE CROSS BLUE SHIELD OF KC	PPO	59.44
			HSA	133.74
			HSA	224.67
			HSA	336.13
		RICOH USA INC	PW C85075929	3.41
		DAVES LOCK SERVICE	SINGLE SIDED KEY	5.60
		GARY S KLEOPPEL	REPLACE BOTH BROKEN TORSIO	49.00
		MISSOURI LAGERS	MONTHLY CONTRIBUTIONS	318.11
		PETTY CASH	SNOW TEAM A MEALS	8.90
			SNOW TEAM B MEALS	7.87
		SAMS CLUB/GEGRB	SUPPLIES/KITCHEN SUPPLIES	11.32
		ADVANCE AUTO PARTS	TOWELS/PROTECTOR REFILL/BU	9.68
		OFFICE DEPOT	PAD HOLDER/CLIPBOARD	9.35
			DRIVE,USB,NOVELTY 16GB	4.75
			CLEANER/ERASER	1.40
		OREILLY AUTOMOTIVE INC	SPRAY PAINT	1.39
			64OZ PROTECT/14OZ HAND CLN	4.50
			OIL FILTER/1QT SYNTHCOIL	5.66
		DELTA DENTAL OF MO LOCKBOX	DENTAL	12.02
			DENTAL	23.93
			DENTAL	19.86
			DENTAL	5.00
		EMPIRE ELECTRIC SERVICES & TECHNOLOGIE	LABOR/REPLACE 20AMP GFIC O	20.00
		FASTENAL COMPANY	2)STNDRD GRD LHSQ SHVL	3.82
		HOME DEPOT CREDIT SERVICES	1LB CAMPING GAS	4.55
			CREDIT FOR SALES TAX CHARG	0.38-
			GROUND ROD COPPER/2GL GAS	4.00
			PRO SAFETY RED/BLUE/BRUSHE	5.89
			PRO SAFETY RED/BLUE/BRUSHE	7.99
		GOODYEAR COMMERCIAL TIRE	GY 265/70R18 WRL SRA	31.98
		CINTAS CORPORATION # 430	PW/WOLTZ UNIFORMS	17.37
			PW/WOLTZ UNIFORMS	17.37
			PW/WOLTZ UNIFORMS	17.37
		VIKING-CIVES MIDWEST INC	CYLINDER 3 X 10 DA	228.00
			SWENSON 135 GAL PREWET TAN	490.00
			2) KIT TA PB06 DUST COVER	10.00
		SUMMIT TRUCK GROUP	KT HOLDR	32.96_
			TOTAL:	2,146.65
NON-DEPARTMENTAL	WATER/SEWER FUND	BLUE CROSS BLUE SHIELD OF KC	PPO	129.26
			HSA	220.60
			HSA	688.68
			HSA	112.72
		KCMO CITY TREASURER	KC EARNINGS TAX WH	8.33
			KC EARNINGS TAX WH	8.14
		MO DEPT OF REVENUE	JAN 17 SALES TAX	3,228.93
			JAN 17 SALES TAX	64.58-
		DELTA DENTAL OF MO LOCKBOX	DENTAL	36.60

DEPARTMENT	FUND	VENDOR NAME	DESCRIPTION	AMOUNT_
			DENTAL	65.16
			DENTAL	32.50
		AFLAC	AFLAC PRETAX	51.92
			AFLAC-W2 DD PRETAX	54.85
		VISION SERVICE PLAN - IC	VISION	7.23
			VISION	10.40
			VISION	23.32
			VISION	7.08
			TOTAL:	4,621.14
WATER	WATER/SEWER FUND	BLUE CROSS BLUE SHIELD OF KC	PPO	118.88
			HSA	125.86
			HSA	355.43
			HSA	825.40
			HSA	672.28
			HSA	158.84
		PEREGRINE CORPORATION	SEWER MAILING INSERTS	200.00
			SEWER INSERTS	100.00
		RICOH USA INC	PW C85075929	6.83
			CD 85075926	24.37
		DAVES LOCK SERVICE	SINGLE SIDED KEY	11.20
		GARY S KLEOPPEL	REPLACE BOTH BROKEN TORSIO	98.00
		MISSOURI LAGERS	MONTHLY CONTRIBUTIONS	1,095.62
		MISSOURI RURAL WATER ASSOC	2017 900145 STUCKEY	30.00
			2017 900189 MARTIN	30.00
		PETTY CASH	SNOW TEAM A MEALS	17.79
			SNOW TEAM B MEALS	15.74
		SAMS CLUB/GEGRB	SUPPLIES/KITCHEN SUPPLIES	22.64
		ADVANCE AUTO PARTS	TOWELS/PROTECTOR REFILL/BU	19.35
		VANCO SERVICES LLC	JAN 17 GATEWAY ES20605	77.79
		OFFICE DEPOT	CALC SPOOLS/PAPER/BATTERY	51.39
			STAMP/RUBBER BANDS	3.65
			PAD HOLDER/CLIPBOARD	18.69
			DRIVE,USB,NOVELTY 16GB	9.50
			CLEANER/ERASER	2.81
		OREILLY AUTOMOTIVE INC	SPRAY PAINT	2.80
			64OZ PROTECT/14OZ HAND CLN	8.99
			OIL FILTER/1QT SYNTHCOIL	11.33
		DELTA DENTAL OF MO LOCKBOX	DENTAL	11.93
			DENTAL	31.93
			DENTAL	77.17
			DENTAL	39.72
			DENTAL	33.54
		AFLAC	HUNT PREMIUMS	0.89
			HUNT PREMIUMS	11.08
			HUNT PREMIUMS	12.75
		EMPIRE ELECTRIC SERVICES & TECHNOLOGIE	LABOR/REPLACE 20AMP GFIC O	40.00
		FASTENAL COMPANY	2)STNDRD GRD LHSQ SHVL	7.65
			2)STNDRD GRD LHSQ SHVL	19.77
		HOME DEPOT CREDIT SERVICES	1LB CAMPING GAS	9.12
			CREDIT FOR SALES TAX CHARG	0.75-
			GROUND ROD COPPER/2GL GAS	7.98
			GROUND ROD COPPER/2GL GAS	15.04
			PRO SAFETY RED/BLUE/BRUSHE	11.79
			PRO SAFETY RED/BLUE/BRUSHE	98.75
			PRO SAFETY RED/BLUE/BRUSHE	15.96

DEPARTMENT	FUND	VENDOR NAME	DESCRIPTION	AMOUNT_
		GOODYEAR COMMERCIAL TIRE	GY 265/70R18 WRL SRA	63.94
		CINTAS CORPORATION # 430	PW/WOLTZ UNIFORMS	34.72
			PW/WOLTZ UNIFORMS	34.72
			PW/WOLTZ UNIFORMS	34.72
		VIKING-CIVES MIDWEST INC	2) KIT TA PB06 DUST COVER	20.00
		TYLER TECHNOLOGIES INC	FEB MONTHLY FEES	97.00
		SUMMIT TRUCK GROUP	KT HOLDR	65.94
		VISION SERVICE PLAN - IC	VISION	2.89
			TOTAL:	4,913.43
SEWER	WATER/SEWER FUND	BLUE CROSS BLUE SHIELD OF KC	PPO	118.87
			HSA	125.85
			HSA	355.43
			HSA	825.38
			HSA	672.27
			HSA	158.85
		PEREGRINE CORPORATION	SEWER MAILING INSERTS	200.00
			SEWER INSERTS	100.00
		RICOH USA INC	PW C85075929	6.83
			CD 85075926	24.37
		DAVES LOCK SERVICE	SINGLE SIDED KEY	11.20
		GARY S KLEOPPEL	REPLACE BOTH BROKEN TORSIO	98.00
		MISSOURI LAGERS	MONTHLY CONTRIBUTIONS	1,095.66
		PETTY CASH	SNOW TEAM A MEALS	17.79
			SNOW TEAM B MEALS	15.74
		SAMS CLUB/GEGRB	SUPPLIES/KITCHEN SUPPLIES	22.64
		ADVANCE AUTO PARTS	TOWELS/PROTECTOR REFILL/BU	19.35
		VANCO SERVICES LLC	JAN 17 GATEWAY ES20605	77.79
		OFFICE DEPOT	CALC SPOOLS/PAPER/BATTERY	51.38
			STAMP/RUBBER BANDS	3.64
			PAD HOLDER/CLIPBOARD	18.70
			DRIVE,USB,NOVELTY 16GB	9.50
			CLEANER/ERASER	2.80
		OREILLY AUTOMOTIVE INC	SPRAY PAINT	2.80
			64OZ PROTECT/14OZ HAND CLN	8.99
			OIL FILTER/1QT SYNTHCOIL	11.33
		DELTA DENTAL OF MO LOCKBOX	DENTAL	11.93
			DENTAL	31.93
			DENTAL	77.13
			DENTAL	39.69
			DENTAL	33.52
		AFLAC	HUNT PREMIUMS	0.89
			HUNT PREMIUMS	11.07
			HUNT PREMIUMS	12.75
		EMPIRE ELECTRIC SERVICES & TECHNOLOGIE	LABOR/REPLACE 20AMP GFIC O	40.00
		FASTENAL COMPANY	2)STNDRD GRD LHSQ SHVL	7.65
		HOME DEPOT CREDIT SERVICES	1LB CAMPING GAS	9.12
			CREDIT FOR SALES TAX CHARG	0.75-
			GROUND ROD COPPER/2GL GAS	7.98
			PRO SAFETY RED/BLUE/BRUSHE	11.79
			PRO SAFETY RED/BLUE/BRUSHE	15.96
		GOODYEAR COMMERCIAL TIRE	GY 265/70R18 WRL SRA	63.94
		CINTAS CORPORATION # 430	PW/WOLTZ UNIFORMS	34.72
			PW/WOLTZ UNIFORMS	34.72
			PW/WOLTZ UNIFORMS	34.72
		VIKING-CIVES MIDWEST INC	2) KIT TA PB06 DUST COVER	20.00

DEPARTMENT	FUND	VENDOR NAME	DESCRIPTION	AMOUNT_
		TYLER TECHNOLOGIES INC	FEB MONTHLY FEES	97.00
		SUMMIT TRUCK GROUP	KT HOLDR	65.94
		VISION SERVICE PLAN - IC	VISION	2.89

* REFUND CHECKS *

DEPARTMENT	FUND	VENDOR NAME	DESCRIPTION	AMOUNT_
NON-DEPARTMENTAL	WATER/SEWER FUND	WILCOXEN, TIM	US REFUNDS	50.00
		WILCOXEN, TIM	US REFUNDS	50.00_
			TOTAL:	4,819.75

===== FUND TOTALS =====

100	GENERAL FUND	126,145.70
170	TOURISM TAX FUND	3,500.00
200	PARK FUND	35,744.32
210	TRANSPORTATION	22,040.45
400	DEBT SERVICE FUND	1,285,700.00
600	WATER/SEWER FUND	62,718.30

	GRAND TOTAL:	1,535,848.77

SELECTION CRITERIA

SELECTION OPTIONS

VENDOR SET: 01-CITY OF GRAIN VALLEY
VENDOR: All
CLASSIFICATION: All
BANK CODE: All
ITEM DATE: 1/14/2017 THRU 2/03/2017
ITEM AMOUNT: 99,999,999.00CR THRU 99,999,999.00
GL POST DATE: 0/00/0000 THRU 99/99/9999
CHECK DATE: 0/00/0000 THRU 99/99/9999

PAYROLL SELECTION

PAYROLL EXPENSES: NO
CHECK DATE: 0/00/0000 THRU 99/99/9999

PRINT OPTIONS

PRINT DATE: None
SEQUENCE: By Department
DESCRIPTION: Distribution
GL ACCTS: NO
REPORT TITLE: C O U N C I L R E P O R T
SIGNATURE LINES: 0

PACKET OPTIONS

INCLUDE REFUNDS: YES
INCLUDE OPEN ITEM: YES

INTENTIONALLY LEFT BLANK

Ordinances

INTENTIONALLY LEFT BLANK

**CITY OF GRAIN VALLEY
BOARD OF ALDERMEN AGENDA ITEM**

MEETING DATE	01/23/2017 & 02/13/17	
BILL NUMBER	B17-01	
AGENDA TITLE	AN ORDINANCE APPROVING THE FINAL PLAT OF OLD TOWNE MARKETPLACE 11th PLAT	
REQUESTING DEPARTMENT	Community Development	
PRESENTER	Rick Arroyo, Community Development Director	
FISCAL INFORMATION	Cost as recommended:	Not Applicable
	Budget Line Item:	Not Applicable
	Balance Available	Not Applicable
	New Appropriation Required:	<input type="checkbox"/> Yes <input checked="" type="checkbox"/> No
PURPOSE	The purpose of this request is to gain final plat approval for Old Towne Marketplace 11 th Plat.	
BACKGROUND	The entire Old Towne Marketplace plat was approved at the preliminary plat level when the development was started. The developer has been doing the final plats when a building is going to be built. This process is similar to the one being used in the East Kansas City Industrial Park.	
SPECIAL NOTES	The building being planned for this lot is for Edward Jones Investments.	
ANALYSIS	This plat consists of just one lot. Access off of Garden Street will consist of a private drive that connects to the existing drive behind the State Farm and Red Cross Pharmacy buildings. This drive leads to another drive that allows for access onto Eagles Parkway. Access to Buckner – Tarsney can also be achieved by turning south on Garden and then turning east on Rock Creek Lane. Overall, the site layout will fit with the State Farm and Red Cross Pharmacy site designs.	
PUBLIC INFORMATION PROCESS	Not Applicable	

BOARD OR COMMISSION RECOMMENDATION	Planning & Zoning Commission recommended approval
DEPARTMENT RECOMMENDATION	Staff Recommends Approval
REFERENCE DOCUMENTS ATTACHED	Ordinance, Plat, Aerial & Site Layout

**CITY OF
GRAIN VALLEY**

**STATE OF
MISSOURI**

BILL NO. B17-01

ORDINANCE NO.
SECOND READING

INTRODUCED BY:
ALDERMAN ARNOLD

FIRST READING

January 23, 2017 (6-0)

**AN ORDINANCE APPROVING THE FINAL PLAT OF OLD TOWNE
MARKETPLACE 11th PLAT**

WHEREAS, the Mayor and the Board of Aldermen are committed to the development of the City; and

WHEREAS, a meeting was held on January 18, 2017 in which the Planning and Zoning Commission recommended that the Board of Aldermen approve the final plat; and

WHEREAS, the Board of Aldermen of the City of Grain Valley, Missouri, has determined that it is desirable; and

WHEREAS, the approved plat shall be recorded at the Jackson County Recorder of Deeds office.

NOW THEREFORE, BE IT ORDAINED by the Board of Aldermen of the City of Grain Valley, Missouri as follows:

SECTION 1: The property legally described below as Old Towne Marketplace – 11th Plat, is hereby accepted as a final plat.

PROPERTY DESCRIPTION

A TRACT OF LAND LOCATED IN THE SOUTHWEST QUARTER OF SECTION 35 AND IN THE SOUTHEAST QUARTER OF SECTION 34 ALL IN TOWNSHIP 49, RANGE 30, GRAIN VALLEY, JACKSON COUNTY, MISSOURI DESCRIBED AS FOLLOWS:

BEGINNING AT THE SOUTHWEST CORNER OF LOT 1, OLD TOWNE MARKETPLACE, 9TH PLAT, A SUBDIVISION IN GRAIN VALLEY, JACKSON COUNTY, MISSOURI; THENCE NORTH 88 DEGREES 09 MINUTES 09 SECONDS WEST ALONG THE EXTENSION OF THE SOUTH LINE OF SAID LOT 1, 171.78 FEET TO A POINT ON THE EAST RIGHT OF WAY LINE OF GARDEN STREET AS NOW ESTABLISHED BY RECORDED PLAT OF OLD TOWNE MARKETPLACE, 4TH PLAT IN SAID CITY, COUNTY AND STATE; THENCE NORTH 01 DEGREES 43 MINUTES 21 SECONDS EAST ALONG SAID EAST RIGHT OF WAY LINE, 209.26 FEET TO A POINT ON THE SOUTH RIGHT OF WAY LINE OF EAGLES PARKWAY (FORMERLY MISSOURI STATE ROUTE AA); THENCE SOUTH 88 DEGREES 11 MINUTES 49 SECONDS EAST ALONG SAID RIGHT OF WAY LINE, 114.94 FEET; THENCE SOUTH 88 DEGREES 22 MINUTES 07 SECONDS EAST ALONG SAID RIGHT OF WAY LINE, 57.30 FEET TO THE NORTHWEST CORNER OF SAID "OLD TOWNE MARKETPLACE, 9TH PLAT"; THENCE SOUTH 01 DEGREES 50 MINUTES 51 SECONDS WEST ALONG THE WEST LINE OF SAID "OLD TOWNE MARKETPLACE, 9TH PLAT", 209.57 FEET TO THE POINT OF BEGINNING. CONTAINING 0.83 ACRES, MORE OR LESS. BASIS OF BEARINGS TAKEN FROM "OLD TOWNE MARKETPLACE, 9TH PLAT".

[B17-01]

Read two times and PASSED by the Board of Aldermen this ____ day of _____, 2017,
the aye and nay votes being recorded as follows:

ALDERMAN ARNOLD _____
ALDERMAN HEADLEY _____
ALDERMAN PALECEK _____

ALDERMAN COLEMAN _____
ALDERMAN JOHNSTON _____
ALDERMAN WEST _____

MAYOR _____
(in the event of a tie only)

Approved as to form:

James Cook
City Attorney

Mike Todd
Mayor

ATTEST:

Khalilah Holland
Deputy City Clerk



GARDEN

EAGLES

GARDEN

100 B
100 A

101 B
101 A

126

124

122

120

401

301

203

203 B

203 A

203 C

0

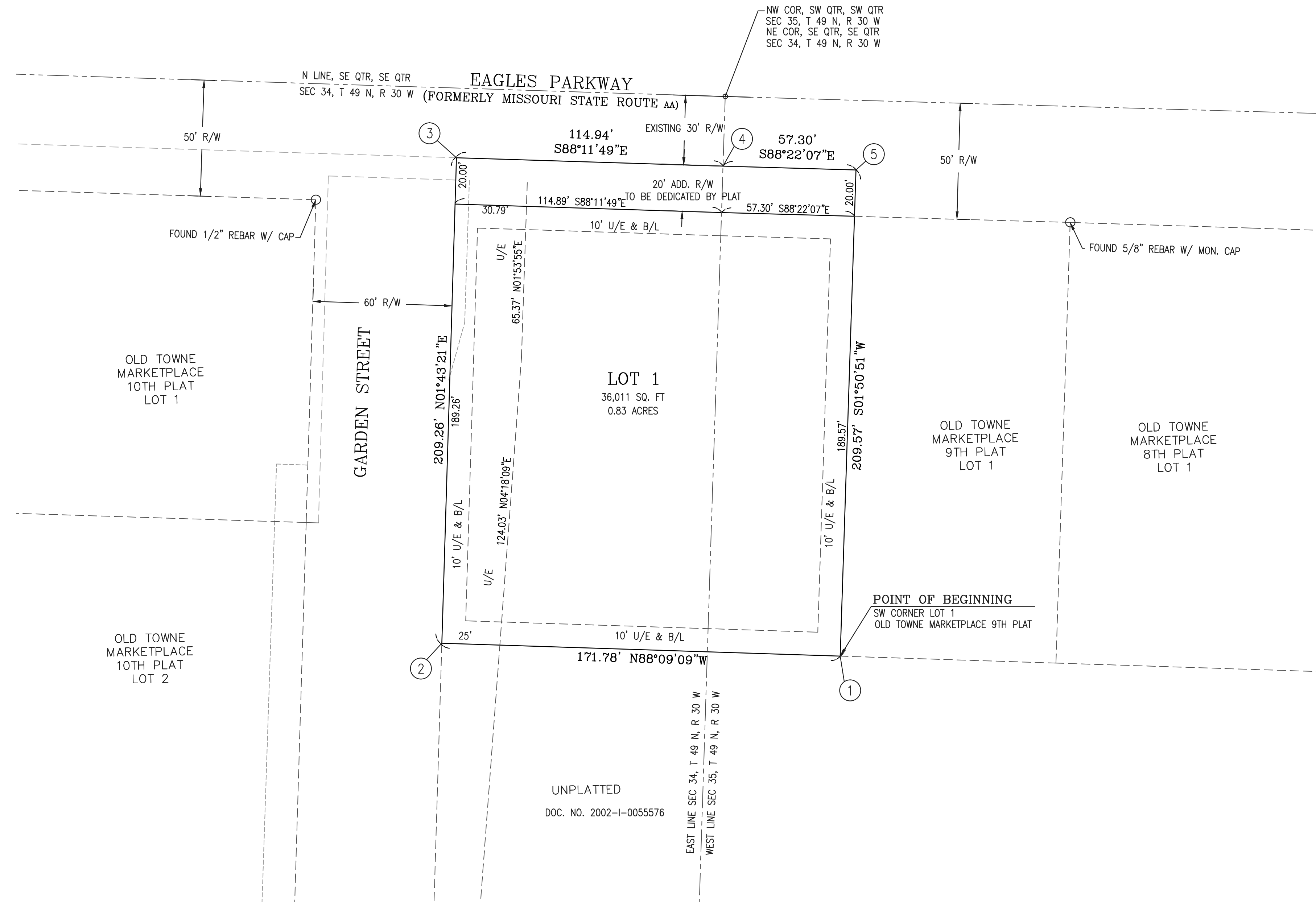
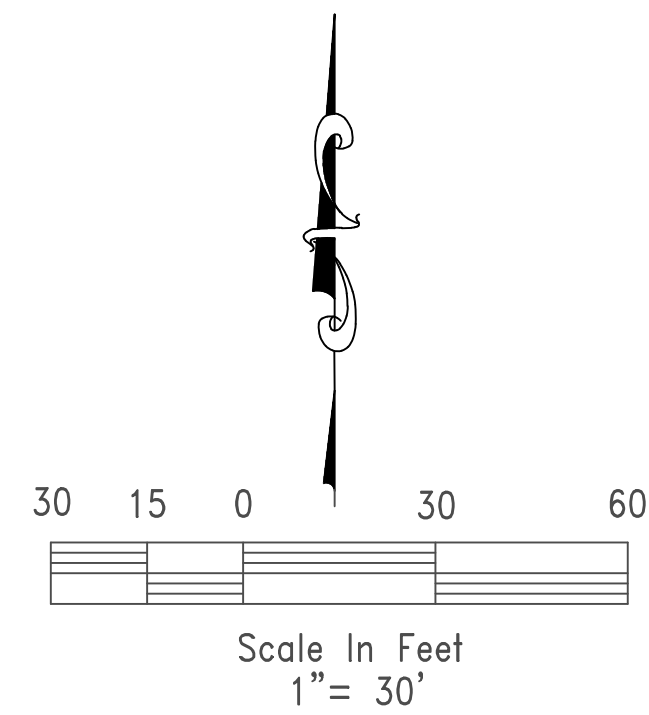


1 inch = 60 feet
0 30 60 Feet

INTENTIONALLY LEFT BLANK

FINAL PLAT
OLD TOWNE MARKETPLACE
11TH PLAT

A PART OF THE SW 1/4 OF SECTION 35
 AND SE 1/4 SECTION 34, TOWNSHIP 49, RANGE 30,
 GRAIN VALLEY, JACKSON COUNTY, MISSOURI



PLAT DEDICATION:
 THE UNDERSIGNED PROPRIETORS OF THE ABOVE DESCRIBED TRACT OF LAND HAS CAUSED THE SAME TO BE SUBDIVIDED IN THE MANNER SHOWN ON THE ACCOMPANYING PLAT, WHICH SUBDIVISION SHALL BE HEREAFTER KNOWN AS "OLD TOWNE MARKETPLACE - 11TH PLAT".

BUILDING LINES:
 BUILDING LINES OR SETBACK LINES WILL BE ESTABLISHED BY THE DEVELOPMENT PLAN AND NO BUILDING OR PORTION THEREOF SHALL BE BUILT BETWEEN THIS LINE AND THE LOT LINE NEAREST THERETO.

EASEMENT DEDICATION:
 AN EASEMENT IS HEREBY GRANTED TO THE CITY OF GRAIN VALLEY, MISSOURI, FOR THE PURPOSE OF LOCATING, CONSTRUCTING, OPERATING, AND MAINTAINING FACILITIES FOR WATER, GAS, ELECTRICITY, SEWAGE, TELEPHONE, CABLE TV AND SURFACE DRAINAGE, INCLUDING, BUT NOT LIMITED TO, UNDERGROUND PIPES AND CONDUITS, PAD MOUNTED TRANSFORMERS, SERVICES PEDESTALS, ANY OR ALL OF THEM UPON, OVER, UNDER AND ALONG THE STRIPS OF LAND DESIGNATED UTILITY EASEMENTS (U/E), PROVIDED THAT THE EASEMENT GRANTED HEREIN IS SUBJECT TO ANY AND ALL EXISTING EASEMENTS. ANY UTILITIES LOCATED WITHIN THE DESIGNATED UTILITY EASEMENTS, BY VIRTUE OF THEIR EXISTENCE, DO HEREBY COVENANT, CONSENT, AND AGREE THAT THEY SHALL BE SUBORDINATE TO SAID PUBLIC RIGHT OF WAY IN THE EVENT THAT ADDITIONAL PUBLIC RIGHT OF WAY IS DEDICATED OVER THE LOCATION OF THE UTILITY EASEMENT. WHERE OTHER EASEMENTS ARE DESIGNATED FOR A PARTICULAR PURPOSE, THE USE THEREOF SHALL BE LIMITED TO THAT PURPOSE ONLY. ALL OF THE ABOVE EASEMENTS SHALL BE KEPT FREE FROM ANY AND ALL OBSTRUCTIONS WHICH WOULD INTERFERE WITH THE CONSTRUCTION OR RECONSTRUCTION AND PROPER, SAFE AND CONTINUOUS MAINTENANCE OF THE AFORESAID USES AND SPECIFICALLY THERE SHALL NOT BE BUILT THEREON OR THEREOVER ANY STRUCTURE (EXCEPT DRIVEWAYS, PAVED AREAS, GRASS, SHRUBS AND FENCES) NOR SHALL THERE BE ANY OBSTRUCTION TO INTERFERE WITH THE AGENTS AND EMPLOYEES OF GRAIN VALLEY, MISSOURI, AND ITS FRANCHISED UTILITIES FROM GOING UPON SAID EASEMENT AND AS MUCH OF THE ADJOINING LANDS AS MAY BE REASONABLY NECESSARY IN EXERCISING THE RIGHTS GRANTED BY THE EASEMENT. NO EXCAVATION OF FILL SHALL BE MADE OR OPERATION OF ANY KIND OR NATURE SHALL BE PERFORMED WHICH WILL REDUCE OR INCREASE THE EARTH COVERAGE OVER THE UTILITIES ABOVE STATED OR THE APPURTENANCES THERETO WITHOUT A VALID PERMIT FROM THE DEPARTMENT OF PUBLIC WORKS AS TO UTILITY EASEMENTS.

STREET DEDICATION:
 STREETS SHOWN HEREON AND NOT HERETOFORE DEDICATED FOR PUBLIC USE AS STREET RIGHT-OF-WAY ARE HEREBY DEDICATED.

LEGAL DESCRIPTION:
 A TRACT OF LAND LOCATED IN THE SOUTHWEST QUARTER OF SECTION 35 AND IN THE SOUTHEAST QUARTER OF SECTION 34 ALL IN TOWNSHIP 49, RANGE 30, GRAIN VALLEY, JACKSON COUNTY, MISSOURI DESCRIBED AS FOLLOWS:
 BEGINNING AT THE SOUTHWEST CORNER OF LOT 1, OLD TOWNE MARKETPLACE, 9TH PLAT, A SUBDIVISION IN GRAIN VALLEY, JACKSON COUNTY, MISSOURI; THENCE NORTH 88 DEGREES 09 MINUTES 09 SECONDS WEST ALONG THE EXTENSION OF THE SOUTH LINE OF SAID LOT 1, 171.78 FEET TO A POINT ON THE EAST RIGHT OF WAY LINE OF GARDEN STREET AS NOW ESTABLISHED BY RECORDED PLAT OF OLD TOWNE MARKETPLACE, 4TH PLAT IN SAID CITY, COUNTY AND STATE; THENCE NORTH 01 DEGREES 43 MINUTES 21 SECONDS EAST ALONG SAID EAST RIGHT OF WAY LINE, 209.26 FEET TO A POINT ON THE SOUTH RIGHT OF WAY LINE OF EAGLES PARKWAY (FORMERLY MISSOURI STATE ROUTE AA); THENCE SOUTH 88 DEGREES 11 MINUTES 49 SECONDS EAST ALONG SAID RIGHT OF WAY LINE, 114.94 FEET; THENCE SOUTH 88 DEGREES 22 MINUTES 07 SECONDS EAST ALONG SAID RIGHT OF WAY LINE, 57.30 FEET TO THE NORTHWEST CORNER OF SAID "OLD TOWNE MARKETPLACE, 9TH PLAT"; THENCE SOUTH 01 DEGREES 50 MINUTES 51 SECONDS WEST ALONG THE WEST LINE OF SAID "OLD TOWNE MARKETPLACE, 9TH PLAT", 209.57 FEET TO THE POINT OF BEGINNING. CONTAINING 0.83 ACRES, MORE OR LESS. BASIS OF BEARINGS TAKEN FROM "OLD TOWNE MARKETPLACE, 9TH PLAT".

ACKNOWLEDGEMENT:

IN WITNESS WHEREOF, OLD TOWNE MARKETPLACE, LLC, A MISSOURI LIMITED LIABILITY COMPANY HAS CAUSED THESE PRESENTS TO BE SIGNED BY ITS MEMBER THIS ____ DAY OF _____, 20__.

MEMBER - DAVID L. WARD

STATE OF _____)
 COUNTY OF _____)SS

ON THIS ____ DAY OF _____, 20__, BEFORE ME APPEARED DAVID L. WARD, MEMBER OF OLD TOWNE MARKETPLACE, LLC, A MISSOURI LIMITED LIABILITY COMPANY TO ME KNOWN TO BE THE PERSON DESCRIBED IN AND WHO EXECUTED THE FOREGOING INSTRUMENT; AND ACKNOWLEDGED THAT HE EXECUTED THE SAME AS HIS FREE ACT AND DEED.

IN TESTIMONY WHEREOF, I HAVE HEREUNTO SET MY HAND AND AFFIXED MY OFFICIAL SEAL AT MY OFFICE IN _____ THE DAY AND YEAR LAST ABOVE WRITTEN.

SEAL

NOTARY PUBLIC IN AND FOR SAID COUNTY AND STATE

MY TERM EXPIRES _____

CITY ACKNOWLEDGEMENT:

THIS IS TO CERTIFY THAT THE WITHIN PLAT OF "OLD TOWNE MARKET PLACE - 11TH PLAT", WAS SUBMITTED TO AND APPROVED BY THE GRAIN VALLEY PLANNING AND ZONING COMMISSION THIS ____ DAY OF _____, 201__.

CHAIRMAN - DEBBIE SAFFELL

SECRETARY - KEVIN BROWNING

THESE EASEMENTS AND RIGHT OF WAY ACCEPTED BY THE GOVERNING BODY OF GRAIN VALLEY, MISSOURI THIS ____ DAY OF _____, 20__.

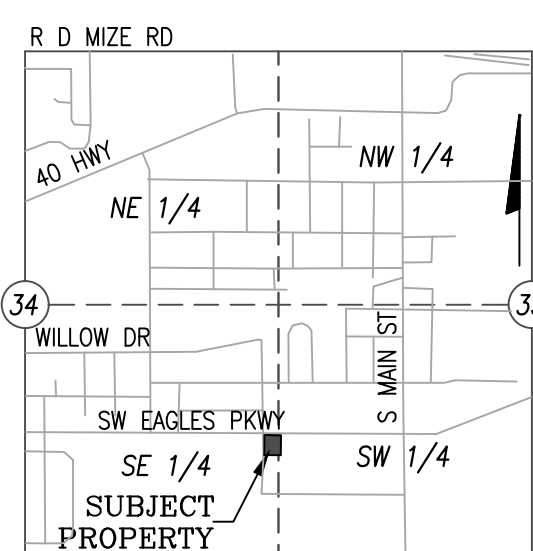
MAYOR - MIKE TODD

DEPUTY CITY CLERK - KHALILAH HOLLAND

JACKSON COUNTY ASSESSOR APPROVAL:

BY: _____

DATE: _____



LOCATION MAP
 SCALE=1"=2000'
 SECTIONS 34 AND 35
 TOWNSHIP 49 RANGE 30

LEGEND

- U/E - UTILITY EASEMENT
- D/E - DRAINAGE EASEMENT
- W/E - WATER EASEMENT
- S/E - SEWER EASEMENT
- B/L - BUILDING LINE
- C/L - CENTERLINE
- R/W - RIGHT OF WAY

MONUMENT LEGEND

SET 1/2" REBAR AND CAP
 @ ALL REAR LOT CORNERS
 RLS-2134, MO.
 RLS-1069, KS.

CURB NOTCHES ARE ON AN
 EXTENSION OF THE SIDE LOT
 LINES.

MONUMENTATION WILL BE COMPLETED
 WITHIN 6 MONTHS AFTER COMPLETION
 OF ALL STREETS AND UTILITIES.

STATE PLANE COORDINATES

- ① 317707.4700
874572.2450
- ② 317705.8800
874623.0870
- ③ 317700.1055
874807.6897
- ④ 317648.3188
874806.0698
- ⑤ 317648.4141
874803.0233

1 METER = 3.28083333'
 KC METRO CONTROL STATION JA-11 RESET WAS USED TO CREATE
 THE COORDINATES AS SHOWN # AND IS BASED ON "MISSOURI
 COORDINATE SYSTEM OF 1983, WEST ZONE" USING A COMBINED
 GRID FACTOR OF 0.9999089.

NOTES:

- 1. THE SUBJECT PROPERTY CONTAINS 0.83 ACRES MORE OR LESS.

I HEREBY CERTIFY THAT THE PLAT OF "OLD TOWNE MARKETPLACE - 11TH PLAT" SUBDIVISION IS BASED ON AN ACTUAL SURVEY MADE BY ME OR UNDER MY DIRECT SUPERVISION AND THAT SAID SURVEY MEETS OR EXCEEDS THE CURRENT MINIMUM STANDARDS FOR PROPERTY BOUNDARY SURVEYS AS ESTABLISHED BY THE DEPARTMENT OF NATURAL RESOURCES, DIVISION OF GEOLOGY AND LAND SURVEY OF THE STATE OF MISSOURI, AND MISSOURI STANDARDS FOR PROPERTY BOUNDARY SURVEYS, ESTABLISHED BY THE MISSOURI BOARD FOR ARCHITECTS, PROFESSIONAL ENGINEERS AND LAND SURVEYORS. I FURTHER CERTIFY THAT I HAVE COMPLIED WITH ALL STATUTES, ORDINANCES, AND REGULATIONS GOVERNING THE PRACTICE OF SURVEYING AND PLATTING OF SUBDIVISIONS TO THE BEST OF MY BELIEF.

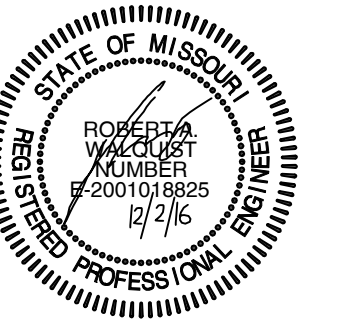
SURVEYOR: ROGER A. BACKUES, PLS MO. NO. 2134

OLD TOWNE MARKETPLACE- 11TH PLAT LOT 1 GRAIN VALLEY, JACKSON COUNTY, MISSOURI	
DATE: NOVEMBER 29, 2016	
DEVELOPER BLUE SPRINGS SAFETY STORAGE LLC 1120 NW EAGLE RIDGE BLVD GRAIN VALLEY, MISSOURI 64029 PH. 816.229.8115	
BOUNDARY & CONSTRUCTION SURVEYING, INC. 821 NE COLUMBUS STREET SUITE 100, LEE'S SUMMIT, MO. 64063 PH.# 816/554-9798, FAX # 816/554-0337	
PROJECT NO. 16-263	SHEET 1 OF 1
OLD TOWNE MARKETPLACE- 11TH PLAT, GRAIN VALLEY, MO	

INTENTIONALLY LEFT BLANK

FINAL SITE PLAN FOR EDWARD JONES BUILDING ON LOT 1 OF "OLD TOWNE MARKETPLACE 11TH PLAT" GRAIN VALLEY, JACKSON COUNTY, MISSOURI SE 1/4, SEC 34, TWP. 49, RGE. 30W

DEVELOPER:
BLUE SPRING SAFETY STORAGE LLC
1120 NW EAGLE RIDGE BLVD.
GRAIN VALLEY, MISSOURI 64039
Ph.# 816-229-8115



- PLAN NOTES:**
- 1 HEAVY ASPHALT PAVEMENT RE: SEE SHEET C210
 - 2 HEAVY CONCRETE PAVEMENT RE: SEE SHEET C210
 - 3 4" THICK x 5'-0" WIDE CONC. WALK. PROVIDE EQ. SPACED CONTROL JOINTS @ 5'-0" O.C. BETWEEN EXPANSION JOINTS (E.J.). PROVIDE E.J.'S EVERY 50'-0" MAX., UNLESS DIMENSIONED OTHERWISE.
 - 4 ACCESSIBILITY RAMP RE: SEE SHEET C210
 - 5 PAINT ACCESSIBLE PARKING SYMBOLS ACCORDING TO APWA PAVEMENT MARKING STANDARDS. RE: SEE SHEET C210
 - 6 INSTALL ACCESSIBLE PARKING SIGN "TYPE B" RE: SEE SHEET C210
 - 7 STRIPE PAVING WITH 4" WIDE STRIPE & PAINT ACCORDING TO APWA PAVEMENT MARKING STANDARDS.
 - 8 CG-1 CURB (WET & DRY) RE: SEE SHEET C210
 - 9 TRASH ENCLOSURE RE: SEE SHEET C210
 - 10 CURB WALK RE: SEE SHEET C210
 - 11 SITE MONUMENT SIGN RE: SEE ARCHITECTURAL PLANS
 - 12 5' CITY SIDEWALK RE: SEE CITY DETAILS
 - 13 CONCRETE FLUME RE: SEE SHEET C210

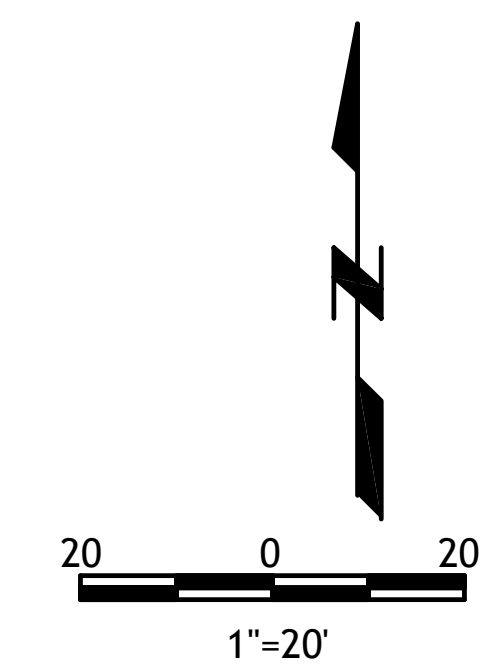
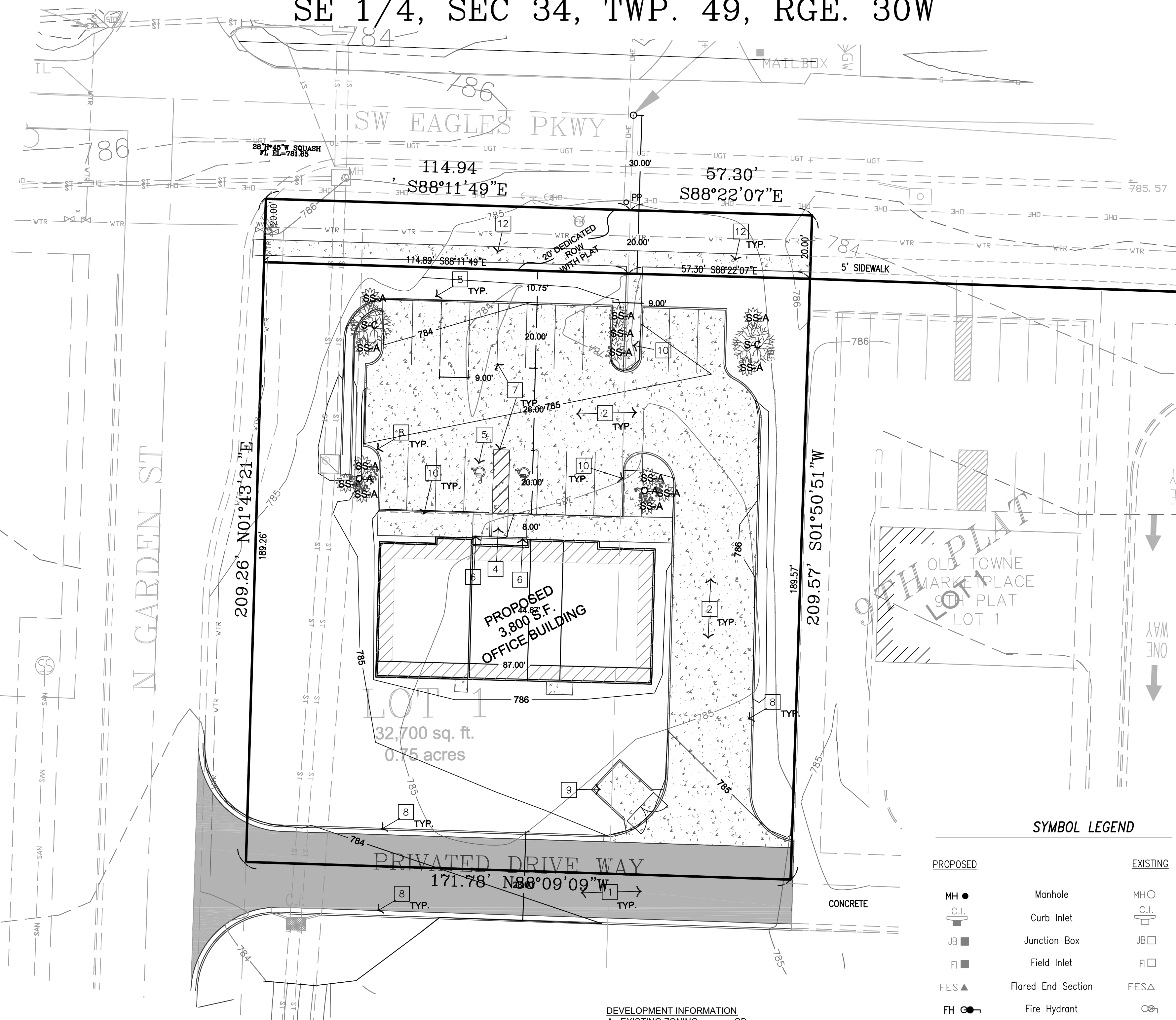
LEGAL DESCRIPTION:
A TRACT OF LAND LOCATED IN THE SOUTHWEST QUARTER OF SECTION 35 AND IN THE SOUTHEAST QUARTER OF SECTION 34 ALL IN TOWNSHIP 49, RANGE 30, GRAIN VALLEY, JACKSON COUNTY, MISSOURI DESCRIBED AS FOLLOWS:
BEGINNING AT THE SOUTHWEST CORNER OF LOT 1, OLD TOWNE MARKETPLACE, 9TH PLAT, A SUBDIVISION IN GRAIN VALLEY, JACKSON COUNTY, MISSOURI; THENCE NORTH 88 DEGREES 09 MINUTES 09 SECONDS WEST ALONG THE EXTENSION OF THE SOUTH LINE OF SAID LOT 1, 171.78 FEET TO A POINT ON THE EAST RIGHT OF WAY LINE OF GARDEN STREET AS NOW ESTABLISHED BY RECORDED PLAT OF OLD TOWNE MARKETPLACE, 4TH PLAT IN SAID CITY, COUNTY AND STATE; THENCE NORTH 01 DEGREES 43 MINUTES 21 SECONDS EAST ALONG SAID EAST RIGHT OF WAY LINE, 209.26 FEET TO A POINT ON THE SOUTH RIGHT OF WAY LINE OF EAGLES PARKWAY (FORMERLY MISSOURI STATE ROUTE AA); THENCE SOUTH 88 DEGREES 11 MINUTES 49 SECONDS EAST ALONG SAID RIGHT OF WAY LINE, 114.94 FEET; THENCE SOUTH 88 DEGREES 22 MINUTES 07 SECONDS EAST ALONG SAID RIGHT OF WAY LINE, 57.30 FEET TO THE NORTHWEST CORNER OF SAID "OLD TOWNE MARKETPLACE, 9TH PLAT"; THENCE SOUTH 01 DEGREES 50 MINUTES 51 SECONDS WEST ALONG THE WEST LINE OF SAID "OLD TOWNE MARKETPLACE, 9TH PLAT", 209.57 FEET TO THE POINT OF BEGINNING. CONTAINING 0.83 ACRES, MORE OR LESS. BASIS OF BEARINGS TAKEN FROM "OLD TOWNE MARKETPLACE, 9TH PLAT".

PROSED LEGAL DESCRIPTION:
LOT 1 OF "OLD TOWNE MARKETPLACE 11TH PLAT"

FLOODPLAIN NOTE
ENTIRE SITE LIES OUTSIDE OF FLOOD PLAIN



LOCATION MAP



SYMBOL LEGEND		LINE LEGEND	
PROPOSED	EXISTING	PROPOSED	EXISTING
MH ●	Manhole	MH ○	Storm Line
C.I.	Curb Inlet	C.I.	Sanitary Line
JB ■	Junction Box	JB □	Water Line
FI ■	Field Inlet	FI □	Building Line
FES ▲	Flored End Section	FES ▲	Easement Line
FH ●	Fire Hydrant	FES ▲	4' Sidewalk
BO ●	Blow Off	=====	2' Curb
WV ●	Water Valve	~ ~ ~ ~ ~	Contour
WM ●	Water Meter	~~~~~	Tree Line
	Straddle	-----	Fence Line
	Utility Pole	-----	Gas Line
	Guy Wire	-----	Overhead Telephone Line
	Electric Transformer	-----	Underground Telephone Line
	Telephone Pedestal	-----	Overhead Electrical Line
	Cable Pedestal	-----	Underground Electrical Line
CO	Clean Out		

DEVELOPMENT INFORMATION

A. EXISTING ZONING =	GB
B. TOTAL LAND AREA	0.75ac = 32,700sf
C. PROPOSED USE =	OFFICE/
D. EXISTING BUILDING	N/A
E. HEIGHT OF PROPOSED BUILDING	25' (1 STORY)
F. GROSS FLOOR AREA	3,800 S.F.
G. COVERAGE/ IMPERVIOUS AREA	
EXISTING	IMPERVIOUS AREA 0 sf
PROPOSED	TOTAL BUILDING AND PARKING 18,686sf
	PERCENT COVERAGE 57%
H. PARKING	
OFFICE	5 PER 1,000SF =
REQUIRED	19
PROVIDED	19
I. ACCESSIBLE STALLS	
REQUIRED	2
PROVIDED	2

PLANTING SCHEDULE

S-C	COMMON NAME	SCIENTIFIC NAME	CALIPER	PLANT UNITS PER	TOTAL PROPOSED UNITS
2	AUTUMN BLAZE MAPLE	ACER X 'AUTUMN BLAZE'	2" CAL.	-	-
TOTAL PROPOSED = - TOTAL REQUIRED = -					
ORNAMENTAL TREES					
2	ROYAL RAINDROPS CRABAPPLE	MALUS 'ROYAL RAINDROPS'	1.5" CAL.	-	-
TOTAL PROPOSED = - TOTAL REQUIRED = -					
EVERGREEN TREES					
13	BOX WOOD	BUXUS SEMPERVERENS	3GAL	-	-
TOTAL PROPOSED = - TOTAL REQUIRED = -					

CONSULTANTS:
M.E.P.:

CIVIL:
Quist Engineering, Inc
Civil Engineering for Residential
Commercial Site Development
821 NE Columbus St.
Lee's Summit, Missouri 64063
Phone: (816) 550-5675

PROJECT
EDWARD JONES BUILDING
CONSTRUCTION OF:
EDWARD JONES BUILDING
ON
LOT 1 OF
"OLD TOWN MARKET PLACE 10TH PLAT"

GRAIN VALLEY MO
JACKSON COUNTY

DATE: 12-02-2016
REVISION DATE:

DESIGN/ DRAWN:

APPROVED:

SHEET TITLE:
FINAL SITE PLAN

SHEET NUMBER:

C200

FINAL SITE PLAN

PROJECT NO: E16-318

INTENTIONALLY LEFT BLANK

**CITY OF GRAIN VALLEY
BOARD OF ALDERMEN AGENDA ITEM**

MEETING DATE	02/13/2017	
BILL NUMBER	B17-02	
AGENDA TITLE	AN ORDINANCE AMENDING SECTION 215 OF THE CODE OF ORDINANCES OF THE CITY OF GRAIN VALLEY, MISSOURI, PERTAINING TO THE UNLAWFUL POSSESSION AND USE OF WEAPONS AND ESTABLISHING AN EFFECTIVE DATE AND PENALTY PROVISION	
REQUESTING DEPARTMENT	Police	
PRESENTER	David Starbuck, Chief of Police	
FISCAL INFORMATION	Cost as recommended:	Not Applicable
	Budget Line Item:	Not Applicable
	Balance Available:	Not Applicable
	New Appropriation Required:	<input type="checkbox"/> Yes <input checked="" type="checkbox"/> No
PURPOSE	To update the code of ordinances related to unlawful use of weapons and concealed carry permits to align with recent changes in state laws	
BACKGROUND	Senate Bill 656, Section 571.030, RSMo has been updated to include new provisions related to unlawful use of weapons and concealed carry permits. The updated code of ordinances will bring Grain Valley into conformance with the state changes.	
SPECIAL NOTES	None	
ANALYSIS	See Memo	
PUBLIC INFORMATION PROCESS	None	
BOARD OR COMMISSION RECOMMENDATION	None	

DEPARTMENT RECOMMENDATION	Staff Recommends Approval
REFERENCE DOCUMENTS ATTACHED	Ordinance, Memo, Current Ordinance & Redline and Proposed Ordinance

**CITY OF
GRAIN VALLEY**

**STATE OF
MISSOURI**

BILL NO. B17-02

ORDINANCE NO. _____
SECOND READING _____
FIRST READING _____

INTRODUCED BY:
ALDERMAN COLEMAN

**AN ORDINANCE AMENDING SECTION 215 OF THE CODE OF ORDINANCES OF
THE CITY OF GRAIN VALLEY, MISSOURI, PERTAINING TO THE UNLAWFUL
POSSESSION AND USE OF WEAPONS AND ESTABLISHING AN EFFECTIVE DATE
AND PENALTY PROVISION**

WHEREAS, Chapter 215, Code of Ordinances, City of Grain Valley, Missouri (“City”) relating to unlawful use of weapons has been amended from time to time to conform with Section 571.030 and following, RSMo, on the same subject; and

WHEREAS, by passage of Senate Bill 656, Section 571.030, RSMo has been updated to include new provisions, related to unlawful use of weapons and concealed carry permits; and

WHEREAS, the Board of Aldermen of the City has determined it to be in the best interest of the citizens of the City to amend Section 215 to reflect the recent changes to Section 571.030, RSMo., including Sections 571.030; 571.101; 571.104; 571.111; 571.205; 571.215; 571.220; 571.225; and 571.230.

NOW THEREFORE, BE IT ORDAINED by the Board of Aldermen of the City of Grain Valley, Missouri as follows:

SECTION 1: Chapter 215, Article X Offenses Against the Public Order, Section 215.410 of the City of Grain Valley, Missouri Municipal Code of Ordinance is amended to read as the following:

SECTION 215.410 Weapons – Carrying Concealed – Other Unlawful Use.

- A. A person commits the ordinance violation of unlawful use of weapons, except as otherwise provided by Sections 571.101 to 571.121, RSMO, if he or she knowingly:
- (1) Carries concealed upon or about his or her person a knife, a firearm, a blackjack or any other weapon readily capable of lethal use into any area where firearms are restricted under Section 571.107, RSMo, or
 - (2) Sets a spring gun; or
 - (3) Discharges or shoots a firearm into a dwelling house, a railroad train, boat, aircraft, or motor vehicle as defined in Section 302.010, RSMo, or any building or structure used for the assembling of people; or
 - (4) Exhibits, in the presence of one (1) or more persons, any weapon readily capable of lethal use in an angry or threatening manner; or

[B17-02]

(5) Has a firearm or projectile weapon readily capable of lethal use on his or her person, while he or she is intoxicated and handles or otherwise uses such firearm or projectile weapon in either a negligent or unlawful manner or discharges such firearm or projectile weapon unless acting in self-defense; or

(6) Discharges a firearm within one hundred (100) yards of any occupied schoolhouse, courthouse, or church building; or

(7) Discharges or shoots a firearm at a mark, at any object, or at random, on, along or across a public highway or discharges or shoots a firearm into any outbuilding; or

(8) Carries a firearm or other weapon readily capable of lethal use into any church or place where people have assembled for worship, or into any election precinct on any election day, or into any building owned or occupied by any agency of the federal government, state government, or political subdivision thereof, (including any meeting of the Board of Alderman and any legislative or administrative committee of the City of Grain Valley); or

(9) Discharges or shoots a firearm at or from a motor vehicle, as defined in Section 301.010, RSMo, while within the city, or discharges or shoots a firearm at any person, or at any other motor vehicle, or at any building or habitable structure, unless the person was lawfully acting in self-defense; or

(10) Carries a firearm, whether loaded or unloaded, or any other weapon readily capable of lethal use into any school, onto any school bus, or onto the premises of any function or activity sponsored or sanctioned by school officials or the district school board; or

(11) Possesses a firearm while also knowingly in possession of a controlled substance that is sufficient for a felony violation of Section 579.015, RSMo.

B. No Missouri lifetime or extended concealed carry permit or any such permit issued by any other state, shall authorize any person to carry concealed firearms into:

(1) Any police, sheriff, or highway patrol office or station without the consent of the chief law enforcement officer in charge of that office or station. Possession of a firearm in a vehicle on the premises of the office or station shall not be a criminal offense so long as the firearm is not removed from the vehicle or brandished while the vehicle is on the premises;

(2) Within twenty-five feet of any polling place on any election day. Possession of a firearm in a vehicle on the premises of the polling place shall not be a criminal offense so long as the firearm is not removed from the vehicle or brandished while the vehicle is on the premises;

(3) The facility of any adult or juvenile detention or correctional institution prison, or jail. Possession of a firearm in a vehicle on the premises of any adult, juvenile detention, or correctional institution, prison or jail shall not be a criminal offense so long as the firearm is not removed from the vehicle or brandished while the vehicle is on the premises;

(4) Any courthouse solely occupied by the circuit, appellate or supreme court, or any courtrooms, administrative offices, libraries, or other rooms of any such court whether or not such court solely occupies the building in question. This subdivision shall also include, but not be limited, any juvenile, family, drug, or other court offices, any room or office wherein any of the courts or offices listed in this subdivision are temporarily conducting any business within the jurisdiction of such courts or offices, and such other locations in such manner as may be specified by supreme court rule under subdivision (6) of this subsection. Nothing in this subdivision shall preclude those persons listed in subdivision (1) of subsection 2 of section 5713.030 while within their jurisdiction and on duty, those persons listed in subdivisions (2), (4), and (10) of subsection 2 of section 571.030, or such other persons who serve in a law enforcement capacity for a court as may be specified by supreme court rule under subdivision (6) of this subsection from carrying a concealed firearm within any of the areas described in this subdivision. Possession of a firearm in a vehicle on the premises of any of the areas listed in this subdivision shall not be a criminal offense so long as the firearm is not removed from the vehicle or brandished while the vehicle is on the premises.

(5) Any meeting of the governing body or committee thereof of a unit of local government, except that nothing in this subdivision shall preclude a member of the body holding a valid Missouri lifetime or extended concealed carry permit from carrying a concealed firearm at a meeting of the body which he or she is a member. Possession of a firearm in a vehicle on the premises shall not be a criminal offense so long as the firearm is not removed from the vehicle or brandished while the vehicle is on the premises.

(6) Any portion of a building owned, leased, or controlled by the City of Grain Valley, Missouri. Any portion of a building in which the carrying of concealed firearms is prohibited or limited shall be clearly identified by signs posted at the entrance to the restricted area, as provided in Paragraph 13, below.

(7) Any establishment licensed to dispense intoxicating liquor for consumption on the premises, which portion is primarily devoted to that purpose, without the consent of the owner or manager. The provisions of this subdivision shall not apply to the licensee of said establishment. The provisions of this subdivision shall not apply to any bona fide restaurant open to the general public having dining facilities for not less than fifty persons, and that receives at least fifty-one percent of its gross annual income from the dining facilities by the sale of food. This subdivision does not prohibit the possession of a firearm in a vehicle on the premises of the establishment and shall not be a criminal offense so long as the firearm is not removed from the vehicle or brandished while the vehicle is on the premises.

(8) Any area of an airport to which access is controlled by the inspection of

persons and property. Possession of a firearm in a vehicle on the premises of the airport shall not be a criminal offense so long as the firearm is not removed from the vehicle or brandished while the vehicle is on the premises;

(9) Any place where the carrying of a firearm is prohibited by federal law;

(10) Any higher education institution or elementary or secondary school facility without the consent of the governing body of the higher education institution or school official or the district school board, unless the person with the Missouri lifetime or extended concealed carry permit is a teacher or administrator of an elementary or secondary school who has been designated by his or her school district as a school protection officer and is carrying a firearm in a school within that district, in which case no consent is required. Possession of a firearm in a vehicle on the premises of any higher education institution or elementary or secondary school facility shall not be a criminal offense so long as the firearm is not removed from the vehicle or brandished while the vehicle is on the premises;

(11) Any portion of a building used as a child care facility without the consent of the manager. Nothing in this subdivision shall prevent the operator of a child care facility in a family home from owning or possessing a firearm or a Missouri lifetime or extended concealed carry permit;

(12) Any church or other place of religious worship without the consent of the minister or person or persons representing the religious worship organization that exercises control over the place of religious worship. Possession of a firearm in a vehicle on the premises shall not be a criminal offense so long as the firearm is not removed from the vehicle or brandished while the vehicle is on the premises;

(13) Any private property whose owner has posted the premises as being off-limits to concealed firearms by means of one or more signs displayed in a conspicuous place of a minimum size of eleven inches by fourteen inches with the writing thereon in letters of not less than one inch. The owner, business or commercial lessee, manager of a private business enterprise, or any other organization, entity, or person may prohibit persons holding a Missouri lifetime or extended concealed carry permit from carrying concealed firearms on the premises and may prohibit employees, not authorized by the employer, holding a Missouri lifetime or extended concealed carry permit from carrying concealed firearms on the property of the employer. If the building or the premises are open to the public, the employer of the business enterprise shall post signs on or about the premises if carrying a concealed firearm is prohibited. Possession of a firearm in a vehicle on the premises shall not be a criminal offense so long as the firearm is not removed from the vehicle or brandished while the vehicle is on the premises. An employer may prohibit employees or other persons holding a Missouri lifetime or extended concealed carry permit from carrying a concealed firearm in vehicles owned by the employer;

(14) Any sports arena or stadium with a seating capacity of five thousand or more. Possession of a firearm in a vehicle on the premises shall not be a criminal offense so long as the firearm is not removed from the vehicle or brandished while the vehicle is on the premises.

(15) Any hospital accessible by the public. Possession of a firearm in a vehicle on the premises of a hospital shall not be a criminal offense so long as the firearm is not removed from the vehicle or brandished while the vehicle is on the premises.

C. This ordinance shall not apply to or affect any of the following persons, which such uses are reasonably associated with or are necessary to the fulfillment of such person's official duties, except as otherwise provided in this subsection:

(1) All state, county and municipal law enforcement officers who have completed the training required by the police officers standards and training commission pursuant to Sections 590.030 to 590.050, RSMo, and possessing the duty and power of arrest for violation of the general criminal laws of the state or for violation of ordinances of counties or municipalities of the state, whether such officers are on or off duty, and whether such officers are within or outside of the law enforcement agency's jurisdiction, or any person summoned by such officers to assist in making arrest or preserving the peace while actually engaged in assisting such officer;

(2) Wardens, superintendents and keepers of prisons, penitentiaries, jails and other institutions for the detention of persons accused or convicted of crime;

(3) Members of the armed forces or National Guard while performing their official duties;

(4) Those persons vested by Article V, Section 1, of the constitution of the state with the judicial power of the state and those persons vested by Article III of the Constitution of the United States with the judicial power of the United States, the members of the federal judiciary; or

(5) Any person whose bona fide duty is to execute process, civil or criminal;

(6) Any federal probation officer or federal flight deck officer as defined under the federal flight deck officer program, 49 U.S.C. Section 44921, regardless of whether such officers are on duty, or within the law enforcement agency's jurisdiction;

(7) Any state probation or parole officer, including supervisors and members of the board of probation and parole;

(8) Any corporate security advisory meeting the definition and fulfilling the requirements of the regulations established by the department of public safety under Section 590.750, RSMo;

(9) Any coroner, deputy coroner, medical examiner, or assistant medical examiner.

(10) Any municipal or county prosecuting attorney or assistant prosecuting attorney; municipal, associate, or circuit judge; or any person appointed by a court to be a special prosecutor who has completed the firearms safety training course required under subsection 2 of Section 571.111, RSMo.

(11) Any member of the fire department who is employed on a full-time basis as a fire investigator and who has a valid concealed carry endorsement issued prior to Section 571.111, RSMo, when such uses are reasonably associated with or are necessary to the fulfillment of such person's official duties.

(12) Nothing in this section shall make it unlawful for a student to actually participate in school-sanctioned gun safety courses, student military or ROTC courses, or other school-sponsored firearm-related events, provided the student does not carry a firearm or other weapon readily capable of lethal use into any school, onto any school bus, or onto the premises of any function or activity sponsored or sanctioned by school officials or the district school board.

D. Penalty

(1) Any person found guilty of violating any provisions of this ordinance shall not be guilty of a crime, but the violator shall be subject to immediate removal from the premises, business or building.

If the person refuses to leave upon request of the owner, manager or authorized person, and the police department is summoned to assist in the removal, the person found to have refused to leave the premises may be cited by general ordinance summons for such failure to leave and may be required to appear in the Grain Valley Municipal Court. Upon conviction, the violating person may be fined a maximum of \$100 for the first violation; \$200 for any subsequent violation within six (6) months of the first violation; and maximum of \$500 for any third or subsequent violation.

(2) In addition, said violating person may be charged with other applicable ordinance violations, including trespass, disorderly conduct, and other specific code violations. The Court may impose penalties for such violations as set forth in the City's General Penalty Provision, Section 100.110 herein.

SECTION 2: This ordinance shall become effective on February 27, 2017.

Read two times and PASSED by the Board of Aldermen this ____ day of _____, 2017,
the aye and nay votes being recorded as follows:

ALDERMAN ARNOLD _____
ALDERMAN HEADLEY _____
ALDERMAN PALECEK _____

ALDERMAN COLEMAN _____
ALDERMAN JOHNSTON _____
ALDERMAN WEST _____

MAYOR _____
(in the event of a tie only)

Approved as to form:

James Cook
City Attorney

Mike Todd
Mayor

ATTEST:

Khalilah Holland
Deputy City Clerk

INTENTIONALLY LEFT BLANK



GRAIN VALLEY
POLICE

711 Main St
Grain Valley, MO 64029
Phone 816.847.6250
Fax 816.847.6259


February 7, 2017

TO: Grain Valley Board of Aldermen
FROM: David Starbuck, Chief of Police
SUBJECT: Ordinance to Amend Section 215.410

On January 1, 2017 Missouri Senate Bill 656 took effect, which enacted fourteen (14) new revisions and provisions related to existing Missouri Statutes which covered Criminal Firearms Offenses. The statute revised several previous criminal offenses, generally including carrying of concealed firearms by citizens without a permit, with some restrictions.

The existing Grain Valley Ordinance (Section 215), which included prohibitions for the illegal carrying of concealed firearms without a permit (other than sworn law enforcement), was no longer valid because it did not conform to existing state law. I and City Attorney Jim Cook worked to develop the proposed ordinance now being presented for consideration by the Board of Aldermen. Mr. Cook has revised the city ordinance to conform to the new Missouri Statute. The proposed ordinance resolution has been placed on the Agenda for the Board of Aldermen meeting of February 13, 2017.

Submitted for your information and review.

Respectfully,

David Starbuck
Chief of Police

CC: Ryan Hunt

INTENTIONALLY LEFT BLANK

City of Grain Valley, MO
Monday, February 6, 2017

Chapter 215. Offenses

Article X. Offenses Against the Public Order

Section 215.410. Weapons – Carrying Concealed – Other Unlawful Use.

- A. A person commits the offense of unlawful use of weapons if he/she knowingly:
1. Carries concealed upon or about his/her person a knife, a firearm, a blackjack or any other weapon readily capable of lethal use.
 2. Discharges or shoots a firearm within the City limits.
 3. Exhibits, in the presence of one (1) or more persons, any weapon readily capable of lethal use in an angry or threatening manner or has a firearm or projectile weapon capable of lethal use on his or her person, while he or she is intoxicated, and handles or otherwise uses such firearm or projectile weapon in either a negligent or unlawful manner or discharges such firearm or projectile weapon unless acting in self-defense.
[Ord. No. 2369 §1, 10-12-2015]
 4. Carries a firearm or any other weapon readily capable of lethal use into any church or place where people have assembled for worship, or into any school, or into any election precinct on any election day, or into any building owned or occupied by any agency of the Federal Government, State Government or of the City, or into any public assemblage of persons met for any lawful purpose, except as provided below.
- B. Subparagraphs (1), (2) and (4) of Subsection **(A)** of this Section shall not apply to or affect any of the following:
1. All State, County and Municipal Law Enforcement Officers possessing the duty and power of arrest for violation of the general criminal laws of the State or for violation of ordinances of counties or municipalities of the State, or any person summoned by such officers to assist in making arrests or preserving the peace while actually engaged in assisting such officer;

2. Wardens, superintendents and keepers of prisons, penitentiaries, jails and other institutions for the detention of persons accused or convicted of crime;
 3. Members of the Armed Forces or National Guard while performing their official duty;
 4. Those persons vested by Article V, Section 1 of the Constitution of Missouri with the judicial power of the State and those persons vested by Article III of the Constitution of the United States with the judicial power of the United States, the members of the Federal Judiciary;
 5. Any person whose bona fide duty is to execute process, civil or criminal;
 6. Any Federal probation officer; and
 7. Any corporate security advisor meeting the definition and fulfilling the requirements of the regulations established by the Board of Police Commissioners under Section 84.340, RSMo.
- C. Subparagraphs (1, 3 and 4) of Subsection **(A)** of this Section do not apply when the actor is transporting such weapons in a non-functioning state or in an unloaded state when ammunition is not readily accessible or when such weapons are not readily accessible. Subparagraph (1) of Subsection **(A)** of this Section does not apply when the actor is also in possession of an exposed firearm or projectile weapon for the lawful pursuit of game, or is in his/her dwelling unit or upon business premises over which the actor has possession, authority or control, or is traveling in a continuous journey peaceably through the City.

The following Code does not display images or complicated formatting. Codes should be viewed online. This tool is only meant for editing.

Section 215.410 Weapons — Carrying Concealed — Other Unlawful Use.

~~A. — A person commits the offense of unlawful use of weapons if he/she knowingly:~~

- ~~1. — Carries concealed upon or about his/her person a knife, a firearm, a blackjack or any other weapon readily capable of lethal use.~~
- ~~2. — Discharges or shoots a firearm within the City limits.~~
- ~~3. — Exhibits, in the presence of one (1) or more persons, any weapon readily capable of lethal use in an angry or threatening manner or has a firearm or projectile weapon capable of lethal use on his or her person, while he or she is intoxicated, and handles or otherwise uses such firearm or projectile weapon in either a negligent or unlawful manner or discharges such firearm or projectile weapon unless acting in self-defense. [Ord. No. 2369 §1, 10-12-2015]~~
- ~~4. — Carries a firearm or any other weapon readily capable of lethal use into any church or place where people have assembled for worship, or into any school, or into any election precinct on any election day, or into any building owned or occupied by any agency of the Federal Government, State Government or of the City, or into any public assemblage of persons met for any lawful purpose, except as provided below.~~

~~B. — Subparagraphs (1), (2) and (4) of Subsection (A) of this Section shall not apply to or affect any of the following:~~

- ~~1. — All State, County and Municipal Law Enforcement Officers possessing the duty and power of arrest for violation of the general criminal laws of the State or for violation of ordinances of counties or municipalities of the State, or any person summoned by such officers to assist in making arrests or preserving the peace while actually engaged in assisting such officer;~~
- ~~2. — Wardens, superintendents and keepers of prisons, penitentiaries, jails and other institutions for the detention of persons accused or convicted of crime;~~
- ~~3. — Members of the Armed Forces or National Guard while performing their official duty;~~
- ~~4. — Those persons vested by Article V, Section 1 of the Constitution of Missouri with the judicial power of the State and those persons vested by Article III of the Constitution of the United States with the judicial power of the United States, the members of the Federal Judiciary;~~
- ~~5. — Any person whose bona fide duty is to execute process, civil or criminal;~~
- ~~6. — Any Federal probation officer; and~~
- ~~7. — Any corporate security advisor meeting the definition and fulfilling the requirements of the regulations established by the Board of Police Commissioners under Section 84.340, RSMo.~~

~~C. — Subparagraphs (1, 3 and 4) of Subsection (A) of this Section do not apply when the actor is transporting such weapons in a non-functioning state or in an unloaded state when ammunition is not readily accessible or when such weapons are not readily accessible. Subparagraph (1) of Subsection (A) of this Section does not apply when the actor is also in possession of an exposed firearm or projectile weapon for the lawful pursuit of game, or is in his/her dwelling unit or upon business premises over which the actor has possession, authority or control, or is traveling in a continuous journey peaceably through the City.~~

- A. A person commits the ordinance violation of unlawful use of weapons, except as otherwise provided by Sections 571.101 to 571.121, RSMO, if he or she knowingly:
1. Carries concealed upon or about his or her person a knife, a firearm, a blackjack or any other weapon readily capable of lethal use into any area where firearms are restricted under Section 571.107, RSMo, or
 2. Sets a spring gun; or
 3. Discharges or shoots a firearm into a dwelling house, a railroad train, boat, aircraft, or motor vehicle as defined in Section 302.010, RSMo, or any building or structure used for the assembling of people; or
 4. Exhibits, in the presence of one (1) or more persons, any weapon readily capable of lethal use in an angry or threatening manner; or
 5. Has a firearm or projectile weapon readily capable of lethal use on his or her person, while he or she is intoxicated and handles or otherwise uses such firearm or projectile weapon in either a negligent or unlawful manner or discharges such firearm or projectile weapon unless acting in self-defense; or
 6. Discharges a firearm within one hundred (100) yards of any occupied schoolhouse, courthouse, or church building; or
 7. Discharges or shoots a firearm at a mark, at any object, or at random, on, along or across a public highway or discharges or shoots a firearm into any outbuilding; or
 8. Carries a firearm or other weapon readily capable of lethal use into any church or place where people have assembled for worship, or into any election precinct on any election day, or into any building owned or occupied by any agency of the federal government, state government, or political subdivision thereof, (including any meeting of the Board of Alderman and any legislative or administrative committee of the City of Grain Valley); or
 9. Discharges or shoots a firearm at or from a motor vehicle, as defined in Section 301.010, RSMo, while within the city, or discharges or shoots a firearm at any person, or at any other motor vehicle, or at any building or habitable structure, unless the person was lawfully acting in self-defense; or
 10. Carries a firearm, whether loaded or unloaded, or any other weapon readily capable of lethal use into any school, onto any school bus, or onto the premises of any function or activity sponsored or sanctioned by school officials or the district school board; or
 11. Possesses a firearm while also knowingly in possession of a controlled substance that is sufficient for a felony violation of Section 579.015, RSMo.
- B. No Missouri lifetime or extended concealed carry permit or any such permit issued by any other state, shall authorize any person to carry concealed firearms into:
1. Any police, sheriff, or highway patrol office or station without the consent of the chief law enforcement officer in charge of that office or station. Possession of a firearm in a vehicle on the premises of the office or station shall not be a criminal offense so long as the firearm is not removed from the vehicle or brandished while the vehicle is on the premises;
 2. Within twenty-five feet of any polling place on any election day. Possession of a firearm in a vehicle on the premises of the polling place shall not be a criminal offense so long as the firearm is not removed from the vehicle or brandished while the vehicle is on the premises;
 3. The facility of any adult or juvenile detention or correctional institution prison, or jail. Possession of

a firearm in a vehicle on the premises of any adult, juvenile detention, or correctional institution, prison or jail shall not be a criminal offense so long as the firearm is not removed from the vehicle or brandished while the vehicle is on the premises;

4. Any courthouse solely occupied by the circuit, appellate or supreme court, or any courtrooms, administrative offices, libraries, or other rooms of any such court whether or not such court solely occupies the building in question. This subdivision shall also include, but not be limited, any juvenile, family, drug, or other court offices, any room or office wherein any of the courts or offices listed in this subdivision are temporarily conducting any business within the jurisdiction of such courts or offices, and such other locations in such manner as may be specified by supreme court rule under subdivision (6) of this subsection. Nothing in this subdivision shall preclude those persons listed in subdivision (1) of subsection 2 of section 5713.030 while within their jurisdiction and on duty, those persons listed in subdivisions (2), (4), and (10) of subsection 2 of section 571.030, or such other persons who serve in a law enforcement capacity for a court as may be specified by supreme court rule under subdivision (6) of this subsection from carrying a concealed firearm within any of the areas described in this subdivision. Possession of a firearm in a vehicle on the premises of any of the areas listed in this subdivision shall not be a criminal offense so long as the firearm is not removed from the vehicle or brandished while the vehicle is on the premises.
5. Any meeting of the governing body or committee thereof of a unit of local government, except that nothing in this subdivision shall preclude a member of the body holding a valid Missouri lifetime or extended concealed carry permit from carrying a concealed firearm at a meeting of the body which he or she is a member. Possession of a firearm in a vehicle on the premises shall not be a criminal offense so long as the firearm is not removed from the vehicle or brandished while the vehicle is on the premises.
6. Any portion of a building owned, leased, or controlled by the City of Grain Valley, Missouri. Any portion of a building in which the carrying of concealed firearms is prohibited or limited shall be clearly identified by signs posted at the entrance to the restricted area, as provided in Paragraph 13, below.
7. Any establishment licensed to dispense intoxicating liquor for consumption on the premises, which portion is primarily devoted to that purpose, without the consent of the owner or manager. The provisions of this subdivision shall not apply to the licensee of said establishment. The provisions of this subdivision shall not apply to any bona fide restaurant open to the general public having dining facilities for not less than fifty persons, and that receives at least fifty-one percent of its gross annual income from the dining facilities by the sale of food. This subdivision does not prohibit the possession of a firearm in a vehicle on the premises of the establishment and shall not be a criminal offense so long as the firearm is not removed from the vehicle or brandished while the vehicle is on the premises.
8. Any area of an airport to which access is controlled by the inspection of persons and property. Possession of a firearm in a vehicle on the premises of the airport shall not be a criminal offense so long as the firearm is not removed from the vehicle or brandished while the vehicle is on the premises;
9. Any place where the carrying of a firearm is prohibited by federal law;
10. Any higher education institution or elementary or secondary school facility without the consent of the governing body of the higher education institution or school official or the district school board, unless the person with the Missouri lifetime or extended concealed carry permit is a teacher or administrator of an elementary or secondary school who has been designated by his or her school district as a school protection officer and is carrying a firearm in a school within that district, in which case no consent is required. Possession of a firearm in a vehicle on the premises of any higher education institution or elementary or secondary school facility shall not be a criminal offense so long as the firearm is not removed from the vehicle or brandished while the vehicle is on the

premises;

11. Any portion of a building used as a child care facility without the consent of the manager. Nothing in this subdivision shall prevent the operator of a child care facility in a family home from owning or possessing a firearm or a Missouri lifetime or extended concealed carry permit;
 12. Any church or other place of religious worship without the consent of the minister or person or persons representing the religious worship organization that exercises control over the place of religious worship. Possession of a firearm in a vehicle on the premises shall not be a criminal offense so long as the firearm is not removed from the vehicle or brandished while the vehicle is on the premises;
 13. Any private property whose owner has posted the premises as being off-limits to concealed firearms by means of one or more signs displayed in a conspicuous place of a minimum size of eleven inches by fourteen inches with the writing thereon in letters of not less than one inch. The owner, business or commercial lessee, manager of a private business enterprise, or any other organization, entity, or person may prohibit persons holding a Missouri lifetime or extended concealed carry permit from carrying concealed firearms on the premises and may prohibit employees, not authorized by the employer, holding a Missouri lifetime or extended concealed carry permit from carrying concealed firearms on the property of the employer. If the building or the premises are open to the public, the employer of the business enterprise shall post signs on or about the premises if carrying a concealed firearm is prohibited. Possession of a firearm in a vehicle on the premises shall not be a criminal offense so long as the firearm is not removed from the vehicle or brandished while the vehicle is on the premises. An employer may prohibit employees or other persons holding a Missouri lifetime or extended concealed carry permit from carrying a concealed firearm in vehicles owned by the employer;
 14. Any sports arena or stadium with a seating capacity of five thousand or more. Possession of a firearm in a vehicle on the premises shall not be a criminal offense so long as the firearm is not removed from the vehicle or brandished while the vehicle is on the premises.
 15. Any hospital accessible by the public. Possession of a firearm in a vehicle on the premises of a hospital shall not be a criminal offense so long as the firearm is not removed from the vehicle or brandished while the vehicle is on the premises.
- C. This ordinance shall not apply to or affect any of the following persons, which such uses are reasonably associated with or are necessary to the fulfillment of such person's official duties, except as otherwise provided in this subsection:
1. All state, county and municipal law enforcement officers who have completed the training required by the police officers standards and training commission pursuant to Sections 590.030 to 590.050, RSMo, and possessing the duty and power of arrest for violation of the general criminal laws of the state or for violation of ordinances of counties or municipalities of the state, whether such officers are on or off duty, and whether such officers are within or outside of the law enforcement agency's jurisdiction, or any person summoned by such officers to assist in making arrest or preserving the peace while actually engaged in assisting such officer;
 2. Wardens, superintendents and keepers of prisons, penitentiaries, jails and other institutions for the detention of persons accused or convicted of crime;
 3. Members of the armed forces or National Guard while performing their official duties;
 4. Those persons vested by Article V, Section 1, of the constitution of the state with the judicial power of the state and those persons vested by Article III of the Constitution of the United States with the judicial power of the United States, the members of the federal judiciary; or

5. Any person whose bona fide duty is to execute process, civil or criminal;
6. Any federal probation officer or federal flight deck officer as defined under the federal flight deck officer program, 49 U.S.C. Section 44921, regardless of whether such officers are on duty, or within the law enforcement agency's jurisdiction;
7. Any state probation or parole officer, including supervisors and members of the board of probation and parole;
8. Any corporate security advisory meeting the definition and fulfilling the requirements of the regulations established by the department of public safety under Section 590.750, RSMo;
9. Any coroner, deputy coroner, medical examiner, or assistant medical examiner.
10. Any municipal or county prosecuting attorney or assistant prosecuting attorney; municipal, associate, or circuit judge; or any person appointed by a court to be a special prosecutor who has completed the firearms safety training course required under subsection 2 of Section 571.111, RSMo.
11. Any member of the fire department who is employed on a full-time basis as a fire investigator and who has a valid concealed carry endorsement issued prior to Section 571.111, RSMo, when such uses are reasonably associated with or are necessary to the fulfillment of such person's official duties.
12. Nothing in this section shall make it unlawful for a student to actually participate in school-sanctioned gun safety courses, student military or ROTC courses, or other school-sponsored firearm-related events, provided the student does not carry a firearm or other weapon readily capable of lethal use into any school, onto any school bus, or onto the premises of any function or activity sponsored or sanctioned by school officials or the district school board.

D. Penalty

1. Any person found guilty of violating any provisions of this ordinance shall not be guilty of a crime, but the violator shall be subject to immediate removal from the premises, business or building.

If the person refuses to leave upon request of the owner, manager or authorized person, and the police department is summoned to assist in the removal, the person found to have refused to leave the premises may be cited by general ordinance summons for such failure to leave and may be required to appear in the Grain Valley Municipal Court. Upon conviction, the violating person may be fined a maximum of \$100 for the first violation; \$200 for any subsequent violation within six (6) months of the first violation; and maximum of \$500 for any third or subsequent violation.

2. In addition, said violating person may be charged with other applicable ordinance violations, including trespass, disorderly conduct, and other specific code violations. The Court may impose penalties for such violations as set forth in the City's General Penalty Provision, Section 100.110 herein.

- E. Effective Date. This Ordinance shall become effective on February 27, 2017.

INTENTIONALLY LEFT BLANK

Resolutions

INTENTIONALLY LEFT BLANK

**CITY OF GRAIN VALLEY
BOARD OF ALDERMEN AGENDA ITEM**

MEETING DATE	02/13/2017	
BILL NUMBER	R17-03	
AGENDA TITLE	A RESOLUTION BY THE BOARD OF ALDERMEN OF THE CITY OF GRAIN VALLEY AUTHORIZING THE CITY ADMINISTRATOR TO PURCHASE A PRE-FABRICATED RESTROOM FROM CXT, INC. FOR BUTTERFLY TRAIL PARK	
REQUESTING DEPARTMENT	Parks and Recreation	
PRESENTER	Shannon Davies, Director of Parks & Recreation	
FISCAL INFORMATION	Cost as recommended:	\$19,277.00
	Budget Line Item:	200-22-78720
	Balance Available:	\$20,000.00
	New Appropriation Required:	<input type="checkbox"/> Yes <input checked="" type="checkbox"/> No
PURPOSE	To provide a restroom facility for park users at Butterfly Trail	
BACKGROUND	We initially had a portable toilet located at Butterfly Trail for patrons. Due to vandalism, this structure was completely burned to the ground back in the summer of 2016. This new structure will not burn, rust or rot, while providing a nicer and cleaner restroom facility.	
SPECIAL NOTES	None	
ANALYSIS	None	
PUBLIC INFORMATION PROCESS	Discussed during budgetary meetings with the Board of Aldermen and the Park Board during the fall of 2016.	
BOARD OR COMMISSION RECOMMENDATION	Park Board recommends the purchase.	

DEPARTMENT RECOMMENDATION	Parks & Recreation Department recommends the purchase.
REFERENCE DOCUMENTS ATTACHED	Resolution, Memorandum, Park Board Resolution, Quote & Missouri State Contract Restroom Information

**CITY OF
GRAIN VALLEY**

**STATE OF
MISSOURI**

February 13, 2017

RESOLUTION NUMBER
R17-03

SPONSORED BY
ALDERMAN PALECEK

A RESOLUTION BY THE BOARD OF ALDERMEN OF THE CITY OF GRAIN VALLEY AUTHORIZING THE CITY ADMINISTRATOR TO PURCHASE A PRE-FABRICATED RESTROOM FROM CXT, INC FOR BUTTERFLY TRAIL PARK

WHEREAS, the Board of Aldermen of the City of Grain Valley, Missouri is dedicated to providing quality park facilities and recreational services to meet the needs of citizens; and

WHEREAS, Butterfly Trail Park currently has no restroom facilities for park patrons to utilize; and

WHEREAS, the Grain Valley Park Board has recognized the need to provide this amenity for citizens who use Butterfly Trail Park and has authorized the purchase of this restroom.

NOW THEREFORE, BE IT RESOLVED by the Board of Aldermen of the City of Grain Valley, Missouri as follows:

SECTION 1: The City Administrator is hereby authorized to purchase a pre-fabricated restroom from CXT, Inc. for Butterfly Trail Park.

PASSED and APPROVED, via voice vote, (-) this __ Day of _____, 2017.

Mike Todd
Mayor

ATTEST:

Khalilah Holland
Deputy City Clerk

INTENTIONALLY LEFT BLANK



Parks & Recreation Department
713 S. Main Street
Grain Valley, MO 64029
816-847-6230
www.cityofgrainvalley.org

MEMORANDUM

To: Mayor & Board of Aldermen
Cc: Ryan Hunt, City Administrator
Ken Murphy, Assistant City Administrator
From: Shannon Davies, Director of Parks & Recreation
Date: February 3, 2017
Subject: Purchase of a Pre-fabricated Restroom for Butterfly Trail Park

Butterfly Trail Park currently has no restroom facilities for park patrons. We used to provide a portable toilet on-site for trail users but this structure was vandalized this past summer resulting in complete destruction (arson) of the structure. This structure has not been replaced for fear that the same vandalism will occur again.

The pre-fabricated restroom that we would like to purchase to replace the portable toilet scenario is made out of precast concrete. There is no wood involved and the only metal would be from the interior fixtures. So, we do not have to worry about the structure being burned. This structure can be cleaned from ceiling to floor with a power-washer without worry of wood rot or rusting.

This restroom is a vault structure, which means there is an in-ground holding tank that will need to be pumped-out periodically. No utilities (water, sewer, electricity) will be connected to this building. Based off of the cost to get utilities to the site, coupled with the level of use that the trail currently experiences, we felt that a vault structure will be able to provide the level of service needed. Also, this is a CXT structure, which is the same company we purchased a pre-fabricated restroom from back in 2012 for Armstrong Park. Park staff have been very pleased with this restroom.

CXT currently has the Missouri State Contract (CC160129001) for pre-fabricated restrooms. Also, Liberty Parks and Recreation installed this same CXT model in one of their parks this past month, which afforded us the opportunity to view the structure as well as the installation.

The Grain Valley Park Board has recognized the need to have restroom facilities at Butterfly Trail Park and discussed this purchase at several park board meetings this past year. They have approved the purchase of this restroom. The park board resolution is attached.

Thank you for your consideration.

Shannon Davies
Director of Parks & Recreation

INTENTIONALLY LEFT BLANK

RESOLUTION NO. 17-01

A RESOLUTION OF THE GRAIN VALLEY PARK BOARD AUTHORIZING THE PURCHASE OF A PRE-FABRICATED RESTROOM AS A PARK AMENITY FOR THE BUTTERFLY TRAIL.

WHEREAS, the Grain Valley Park Board acknowledges the importance of offering quality, park and recreational opportunities to the citizens of Grain Valley; and

WHEREAS, the focus of the Grain Valley Park Board is to secure and maintain designated park land as well as provide recreational amenities that are safe and accommodating within those designated parks; and

WHEREAS, there are currently no restroom accommodations at the Butterfly Trail; and

WHEREAS, the Grain Valley Park Board and Grain Valley Board of Aldermen budgeted funds for 2017 for the purchase of a pre-fabricated restroom to be installed at the Butterfly Trail; and

WHEREAS, the Grain Valley Park Board has reviewed and discussed this project and believe this purchase to be in the best interest of the City of Grain Valley.

NOW THEREFORE; BE IT RESOLVED BY THE PARK BOARD OF THE CITY OF GRAIN VALLEY, MISSOURI:

1. The Grain Valley Park Board authorizes the purchase of a pre-fabricated restroom, to be installed at Butterfly Trail as an amenity to the park.

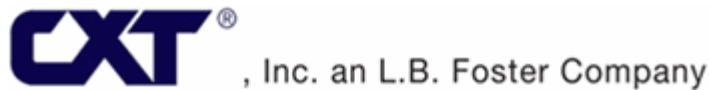
PASSED AND APPROVED this _____ day of _____, 20____

Park Board President
City of Grain Valley

Director of Parks & Recreation
City of Grain Valley

INTENTIONALLY LEFT BLANK

Quote #: **REDW4036CU-2**



Mailing Address:

CXT Incorporated, an LBFoster Co.
3808 North Sullivan Road Bldg. #7
Spokane Valley, WA 99216

Phone: (800) 696-5766

Date: 01/23/2017

To: **City of Grain Valley Parks & Recreation**

713 S Main Street
Grain Valley, MO 64029

Attention: Shannon Davies

Phone: (816) 365-3382

Re: MO City of Grain Valley Parks &
Recreation
Gunnison

Our quotation for the Gunnison Vault Building building is as follows:

Per Building

Gunnison single vault toilet building with standard simulated cedar shake roof and barnwood wall texture, 16 gauge galvanized steel door and frame, plastic riser, ADA grab bars, ADA signs, 3-roll toilet paper holder, wall vent and one, interior solar light kit, solar vent kit, 1000 gallon ABS lined concrete vault.

\$19,277.00

Includes; freight/delivery to the Grain Valley, MO area, crane, off loading and setting of the building on customer's prepared accessible site.

OPTIONS: (includes in total price)

\$670.00 - Solar light package (interior)

\$645.00 - Solar vent package

Freight

\$19,277.00

FOB: Freight FOB Plant Prepaid and Add.

Terms: Net 30 with Credit Approval.

Notes: Sales tax not included
Number of Units: ____

This quotation is subject to the conditions on the attached sheet and the terms hereof shall constitute the exclusive agreement of the parties and all conflicting or additional terms in Buyer's purchase order or any other such documents of Buyer shall have no force or effect.

L.B. FOSTER COMPANY

By _____

Richard Edwards
redwards@lbfooster.com

Accepted this _____ day of _____ 20____

By: _____ (Customer Name)

_____ (Signed)

CONDITIONS OF SALE

1. Taxes: Prices exclude all Federal/State/Local taxes. Tax will be charged where applicable if customer is unable to provide proof of exemption .
2. Payment Terms
Payment to CXT by the purchaser shall be made net 30 days after the submission of the invoice to the purchaser. Interest at a rate equal to the lower of (i) the highest rate permitted by law; or (ii) 1.5% per month will be charged monthly on all unpaid invoices beginning the 35th day (includes 5 day grace period) from the date of the invoice. Under no circumstances can a retention be taken and purchaser shall pay the full invoiced amount without offset or reduction . These terms are available upon approval of credit. If CXT initiates legal proceeding to collect any unpaid amount or other dispute arising out of or relating to this Quote , purchaser shall be liable for all of CXT's costs, expenses and attorneys fees associated with such litigation, including the fees and costs of any appeal.
3. Quotation Term: This offer is subject to acceptance within 60 days from the date of this quotation. After that time, prices are subject to change without notice.
4. Drawings
Prices do not include any documentation other than standard drawings, packing lists, and invoices, unless otherwise stated in quote. Special documentation, reports, or submittals can be supplied at an additional cost. If additional engineering, engineering seals, state approvals, drawings, or insignias are required additional charges may incur.
5. Delivery
Delivery will be scheduled immediately upon receipt of written customer approval of all building submittals, building worksheet(s) and signed contract/purchase order. In the event delivery of the buildings ordered is/are not completed within 30 days of the agreed to schedule through no fault of CXT, an invoice for the full contract value (excluding shipping and installation costs) will be submitted for payment, the terms of which will be as per item 2 in our quotation. Delivery and installation charges will be invoiced at the time of delivery and installation. Should the delivery and installation costs increase due to changes in the delivery period, this increase in cost will be added to the price originally quoted, and will be subject to the contract payment terms. In the event that the delivery is delayed more than 45 days after the agreed to schedule and through no fault of CXT, then in addition to the remedies above, a storage fee of 1 1/2% of contract price per month or part of any month will be charged.
6. Fuel Costs
Fuel costs for crane and freight have been quoted at fuel prices furnished at the time of quotation. If at the time of delivery and installation these costs have risen, CXT reserves the right to adjust the freight and crane costs to reflect the fuel costs furnished at the time of delivery.
7. Responsibilities of the Customer
 - A. Stake exact location building is to be set, including orientation.
 - B. Provide clear and level site, free of overhead and/or underground obstructions.
 - C. Provide site accessible to normal highway trucks and sufficient area for the crane to install and other equipment to perform the contract requirements.
 - D. Customer shall provide notice in writing of low bridges, roadway width or grade, unimproved roads or any other possible obstacles from State highway and/or main county road to site. CXT reserves the right to charge the customer for additional costs incurred for special equipment required to perform delivery and installation.
 - E. Customer is responsible for all permits required.
 - F. Completing and complying with Pre-Order Information Worksheet that is incorporated herein by this reference .
8. Access to Site
For Installation methods described below in paragraph 9 A & B, delivery will be made in normal highway trucks and trailers. If at the time of delivery conditions of access are hazardous or unsuitable for truck equipment for any reason, CXT shall be entitled to payment for extra costs to ensure a safe and quality installation to the chosen site or will agree to an alternative site with better access.
To safely offload the facility referred to within this quotation , CXT must have clear and unobstructed access next to the gravel pad or hole where the facility will be placed . CXT is not responsible for cracked or damaged roads, driveways, sidewalks or aprons that are in the path of the delivery trucks or cranes at the final offloading site . Should CXT be required to obtain a larger crane than quoted due to site amenities or hardscapes , CXT will charge the customer the difference between the crane originally quoted, and the one that was hired to successfully offload the facility safely and efficiently .
9. Installation
 - A. **Full Install.** If the customer opts to have full installation of their new building, CXT will provide a backhoe trailered into the site , and prepare the customer site at the marked hole/pad area. The crane will arrive and set up next to the hole/pad. Any requirements to lift the building over obstacles or not having the ability of the crane to be right next to the hole could incur additional charges. The size of the crane varies however most cranes require an area of 18'x18' for their outriggers. Truck(s) carrying the vaults and the building systematically pull up right next to the crane and are offloaded onto the site . Any requirements to lift the building over obstacles or not having the ability of the truck to be right next to the crane could incur additional charges. Installation crew then performs all necessary excavation, backfill, compaction, site grading, and connection of utilities (if applicable). Please note: additional time and any special equipment needed by the installation crew for unscheduled site work will be billed to the customer.
 - B. **Set-Only Install.** If the customer opts to prepare the hole, and do earthwork preparation for the site, the customer will move all excess dirt to allow access by the crane and semi-truck. The crane will arrive and set up next to the hole/pad. Any requirements to lift the building over obstacles or not having the ability of the crane to be right next to the hole could incur additional charges. The size of the crane varies however most cranes require an area of 18'x18' for their outriggers. Truck(s) carrying the vaults and the building systematically pull up right next to the crane and are offloaded onto the site . Any requirements to lift the building over obstacles or not having the ability of the truck to be right next to the crane could incur additional charges. Customer performs all necessary excavation, backfill, compaction, site grading, connection of utilities (if applicable). If the pad for a flush building, or a customer prepared excavation/ hole prep is not to CXT specifications, and results in extra costs the customer will be responsible for these extra costs.
 - C. **Ship-Only.** If customer opts to self-install their building CXT can provide a drawing of the recommended lifting /rigging arrangement plus the four special lifting plates for the buildings itself with a refundable deposit of \$1,000.00 payable by credit card only. The customer must return lifting plates and hardware to CXT (at customers cost) within 2 weeks (14) days or a \$1,000.00 fee will be charged to the customer credit card. Please note: It is highly recommended that you use our lifting/rigging arrangements. The CXT arrangements will help prevent damage to the building . CXT will not take responsibility for any damage/accidents to the building or workers during the use or non-use of our recommended lifting/rigging arrangements.
 - D. CXT shall be entitled to reimbursement from customer for any expenses that are the result of conditions encountered at the site which are (1) subsurface or otherwise concealed physical conditions which differ materially from those indicated by the customer or (2) unknown physical conditions of an unusual nature, which differ materially from those ordinarily found to exist and generally recognized as inherent in construction activities at the customer 's location.
 - E. Should customer request additions or changes to the work, CXT shall be entitled to payment for additional or changed work . Any request for additions or changed work shall be in writing executed by Customer Field Representative by signing the additional work required section of the Building Acceptance Form , incorporated herein by this reference.
10. Transportation
Your building(s) will be transported from our plant to your installation site via semi-truck with trailer. The length and clearance vary with the style of trailer used to accommodate your building model(s) and must be taken into consideration when determining access to site. If you ordered a(n)....
Cascadian/Rocky Mountain - Requires 1 truck: When shipped in 2-pieces (standard) the building with vault is shipped on a flatbed trailer. The length of the tractor-trailer can be up to 75' long. Must have a 14' height clearance to access site.

Gunnison - Requires 1 truck: Shipped with its vault, this building is typically shipped on a step-deck trailer. The length of the tractor-trailer can be up to 75' long.

Must have 14' height clearance to access site.

Tioga Special • Requires 2 trucks: 1 to transport the building and 1 to transport vaults. The building is typically shipped on a step-deck trailer and 2 vaults are typically transported on a flatbed trailer. The length of the tractor-trailer can be up to 75' long. Must have 14' height and 14' width clearance to access site.

Dbl Cascadian/Dbl Rocky Mountain • Requires 2 trucks: 1 to transport the building and 1 to transport the vaults. The building is typically shipped on a dbl-drop or low boy trailer (approximate ground clearance of 4 to 6") and the 2 vaults are typically transported on a flatbed trailer. The length of the tractor-trailer can range from 75' to 80'. Must have 14' height and 14' width clearance to access site.

Cortez/Ozark I/Teton/Pioneer - Requires 1 truck: Generally shipped on a step-deck trailer. The length of the tractor-trailer can be up to 75' long. Must have a 14' height and 14' width clearance to access site.

Large Flush, Sectional, or Custom Bldgs -

(Arapahoe/OzarkII/Cheyenne/Montrose/Taos/Rainier/PomonayNavajo/Malibu/Kodiak/FontanayDiablo/Denali)

Requires 2-4 trucks, depending on size of building. Each section will be shipped on an RGN trailer (approximate ground clearance of 4 to 6"). The length of the tractor-trailer can range from 80' to 115'. Must have 14' height and 14' width clearance to access site. The Denali model could ship on either an RGN trailer or a dbl-drop.

Schweltzer/Mendocino - Requires 1-2 trucks, depending on size of building. Generally shipped on a step-deck trailer. The length of the tractor-trailer can be up to 75' long. Must have 14' height and 14' width clearance to access site.

11. CXT Warranty

CXT warrants that all structures sold pursuant hereto will, when delivered, conform to specifications of the building listed on the quote. Structures shall be deemed accepted and meeting specifications unless notice identifying the nature of any non-conformity is provided to CXT in writing within one (1) year of delivery. It is specifically understood that CXT's obligation hereunder is for credit or repair only. CXT will repair structural defects against materials and workmanship for one (1) year from date of delivery provided CXT is first given the opportunity to inspect said structure. CXT warranties all components sold within all structures pursuant here to when delivered within structures. Components deemed accepted and meeting specifications shall be warranted for a period of one (1) year against defects in the materials and/or workmanship from said date of delivery. CXT is not responsible for components that are damaged due to misuse, acts of violence, negligence, acts of God, or accidents. Shipping, handling, installation or other incidental or consequential costs, unless otherwise agreed to in writing by CXT, are not included.

This warranty shall not apply to:

Any goods which have been repaired or altered without CXT's express written consent, in such a way as in the reasonable judgment of CXT, to adversely effect the stability or reliability thereof;

To any goods which have been subject to misuse, negligence, acts of God, or accidents;

To any goods which have not been installed to manufacturer's specifications and guidelines, improperly maintained, or used outside of the specifications for which such goods were designed.

12. Disclaimer of Other Warranties

THE WARRANTY SET FORTH ABOVE IS IN LIEU OF ALL OTHER WARRANTIES, EXPRESS OR IMPLIED. ALL OTHER WARRANTIES ARE HEREBY DISCLAIMED. CXT MAKES NO OTHER WARRANTY EXPRESS OR IMPLIED, INCLUDING WITHOUT LIMITATION, NO WARRANTY OF MERCHANTABILITY OR FITNESS FOR A PARTICULAR PURPOSE OR USE.

13. Limitation of Remedies

In the event of any breach of any obligations hereunder; breach of any warranty regarding the goods, or any negligent act or omission of any party, the parties agree to submit all claims to binding arbitration. Any settlement reached shall include all reasonable costs including attorney fees. In no event shall CXT be subject to or liable for any incidental or consequential damages. Without limitation on the foregoing, in no event shall CXT be liable for damages in excess of the purchase price of the goods herein offered.

14. Acceptance

The foregoing terms will be deemed accepted in full by signature and return of one copy to CXT, subject to customer credit approval. A copy of any applicable form of payment security device (i.e. payment bonds) available to CXT shall be included with the signed copy of this agreement.

15. Timing of Billing to Buyer

Seller will invoice Buyer upon shipment from its supplier or facility, unless otherwise indicated on the face of this document.

16. Storage of Material For Buyer

If, at Buyer's request, goods covered by this document are held at Seller's facility or service provider for more than 21 days after they are available for shipment, Buyer shall accept Seller's invoice and pay said invoice based on payment terms set forth herein.

17. Material Reservation

Seller will only reserve material for 30 days with receipt of an executed purchase order, quote or order acknowledgement acceptable to Seller. After that time, material availability, price and shipment date may be adjusted, at Seller's option.

INTENTIONALLY LEFT BLANK

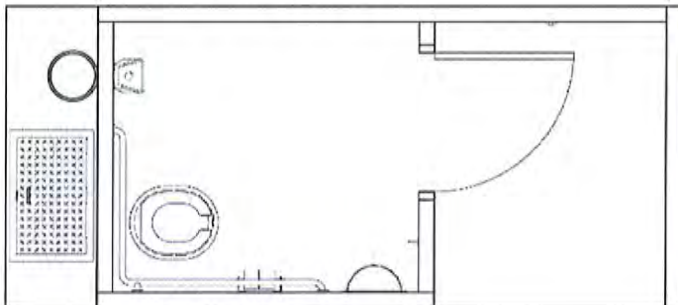
VAULT STYLE BUILDING

Gunnison

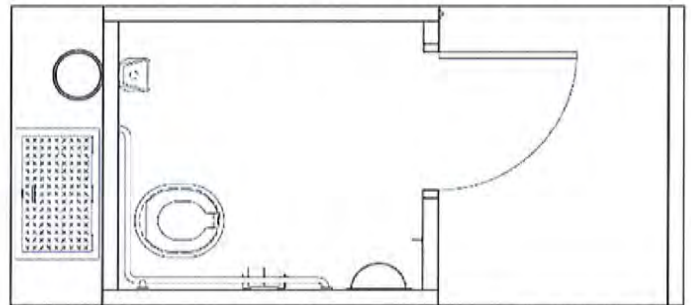
Gunnison single vault toilet building with standard simulated cedar shake roof and barnwood wall texture, 16-gauge galvanized steel door and frame, plastic riser, ADA grab bars, ADA signs, 3-roll toilet paper holder, wall vent and one, 1000 gallon ABS lined concrete vault, crane, off loading, setting of the building on customer's prepared accessible site in the state of Missouri.



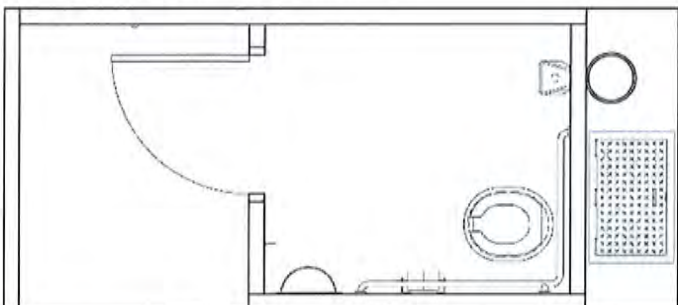
Gunnison- Right Hand



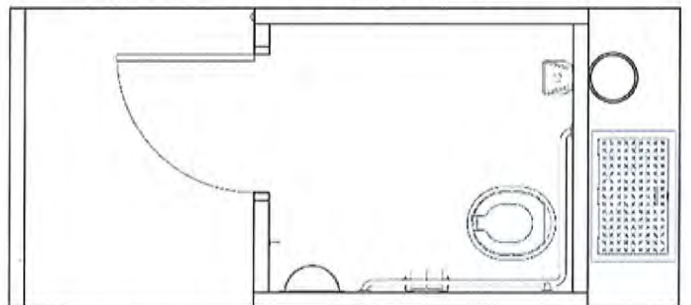
Gunnison- Right Hand Through Screen



Gunnison- Left Hand



Gunnison- Left Hand Through Screen



***Purchaser is responsible for all building permits required and site preparation.**

Sales contact: Rich Edwards | 262.321.1420 | redwards@lbfoster.com
Contract administration (after purchase): Jim Alexander | 509.892.3240 | jalexander@lbfoster.com



Missouri State Contract #CC160129001
December 4, 2015 - December 3, 2016

CXT Precast Concrete Products manufactures restroom, shower and concession buildings in multiple designs, textures and colors. The roof and walls are fabricated with high strength precast concrete to meet all local building codes and textured to match local architectural details. All CXT buildings are designed to meet A.D.A. and to withstand heavy snow, high wind and category E seismic loads. All concrete construction also makes the buildings easy to maintain and withstand the rigors of vandalism. The buildings are prefabricated and delivered complete and ready-to-use, including plumbing and electrical where applicable. With thousands of satisfied customers nationwide, CXT is the leader in prefabricated concrete restrooms.

1. ORDERING ADDRESS(ES): CXT Precast Products, Inc., 3808 N. Sullivan Road, Building 7, Spokane, WA 99216
2. ORDERING PROCEDURES: Fax 509-928-8270
3. PAYMENT ADDRESS(ES): CXT Precast Products, Inc., 3808 N. Sullivan Road, Building 7, Spokane, WA 99216
4. WARRANTY PROVISIONS: CXT provides a warranty against structural defects in material or workmanship for a period of twenty (20) years on all concrete components (does not include non-structural cracking). The warranty is valid only when concrete is used within the specified loadings. Furthermore, said warranty includes only the related material necessary for the construction and fabrication of said concrete components. All other non-concrete components will carry a one (1) year warranty. CXT warrants that all goods sold pursuant hereto will, when delivered, conform to specifications set forth above. Goods shall be deemed accepted and meeting specifications unless notice identifying the nature of any non-conformity is provided to CXT in writing within the specified warranty. CXT, at its option, will repair or replace the goods or issue credit for the customer provided CXT is first given the opportunity to inspect such goods. It is specifically understood that CXT's obligation hereunder is for credit, repair or replacement only, F.O.B. CXT's manufacturing plants, and does not include shipping, handling, installation or other incidental or consequential costs unless otherwise agreed to in writing by CXT.

This warranty shall not apply to:

1. Any goods which have been repaired or altered without CXT's express written consent, in such a way as in the reasonable judgment of CXT, to adversely affect the stability or reliability thereof;

2. To any goods which have been subject to misuse, negligence, acts of God or accidents or

3. To any goods which have not been installed to manufacturer's specifications and guidelines, improperly maintained, or used outside of the specifications for which such goods were designed.

5. TERMS AND CONDITIONS OF INSTALLATION (IF APPLICABLE): All prices subject to the "Conditions of Sale" listed on the CXT quotation form.

Customers are responsible for marking exact location building is to be set; Providing clear and level site, free of overhead and/or underground obstructions; and Providing site accessible to normal highway trucks and sufficient area for the crane to install

and other equipment to perform the contract requirements. Customer shall provide notice in writing of low bridges, roadway width or grade, unimproved roads or any other possible obstacles to access. CXT reserves the right to charge the customer for additional costs incurred for special equipment required to perform delivery and installation. Customers will negotiate installation on a project-by-project basis, which shall be priced as separate line items. For more information regarding installation and truck turning radius guidelines please see our website at <http://www.cxtinc.com>.

In the event delivery of the building/s ordered is/are not completed within 30 days of the agreed to schedule through no fault of CXT, an invoice for the full contract value (excluding shipping and installation costs) will be submitted for payment. Delivery and installation charges will be invoiced at the time of delivery and installation.

Should the delivery and installation costs increase due to changes in the delivery period, this increase will be added to the price originally quoted, and will be subject to the contract payment terms.

In the event that the delivery is delayed more than 90 days after the agreed to schedule and through no fault of CXT, then in addition to the remedies above, a storage fee of 1-½% of contract price per month or any part of any month will be charged.

**Customer is responsible for all local permits and fees.

6. DELIVERY CHARGE: All prices F.O.B. Origin prepaid and added to invoice. CXT operates two (2) manufacturing plants in the United States and will deliver from the closest location on our carriers.

7. PAYMENT TERMS: Payment to CXT by the purchaser shall be made net 30 days after submission of the invoice to the purchaser on approved credit. Interest at a rate equal to the lower of (i) the highest rate permitted by law; or (ii) 1.5% per month will be charged monthly on all unpaid invoices beginning with the 35th day (includes 5 day grace period) for the date of the invoice. Under no circumstance can retention be taken. If CXT initiates legal proceeding to collect any unpaid amount, purchaser shall be liable for all of CXT's costs expenses and attorneys' fees and costs of any appeal.

8. DELIVERY INFORMATION:

All prices F.O.B. Origin prepaid and added to invoice. CXT operates two (2) manufacturing plants in the United States and will deliver from the closest location on our carriers. Use the following chart to determine the origin:

- F.O.B. 3808 N. Sullivan Road, Building 7, Spokane, WA 99216 applies to: AK, CA, HI, ID, MT, ND, NV, OR, SD, UT, WA, WY.

- F.O.B. 901 North Highway 77, Hillsboro, TX 76645 applies to: AL, AR, AZ, CO, CT, DE, FL, GA, IA, IL, IN, KS, KY, LA, MA, MD, ME, MI, MN, MO, MS, NC, NE, NH, NJ, NM, NY, OH, OK, PA, PR, RI, SC, TN, TX, VA, VT, WI, WV.

- Prices exclude all federal/state/local taxes. Tax will be charged where applicable if customer is unable to provide proof of exemption.